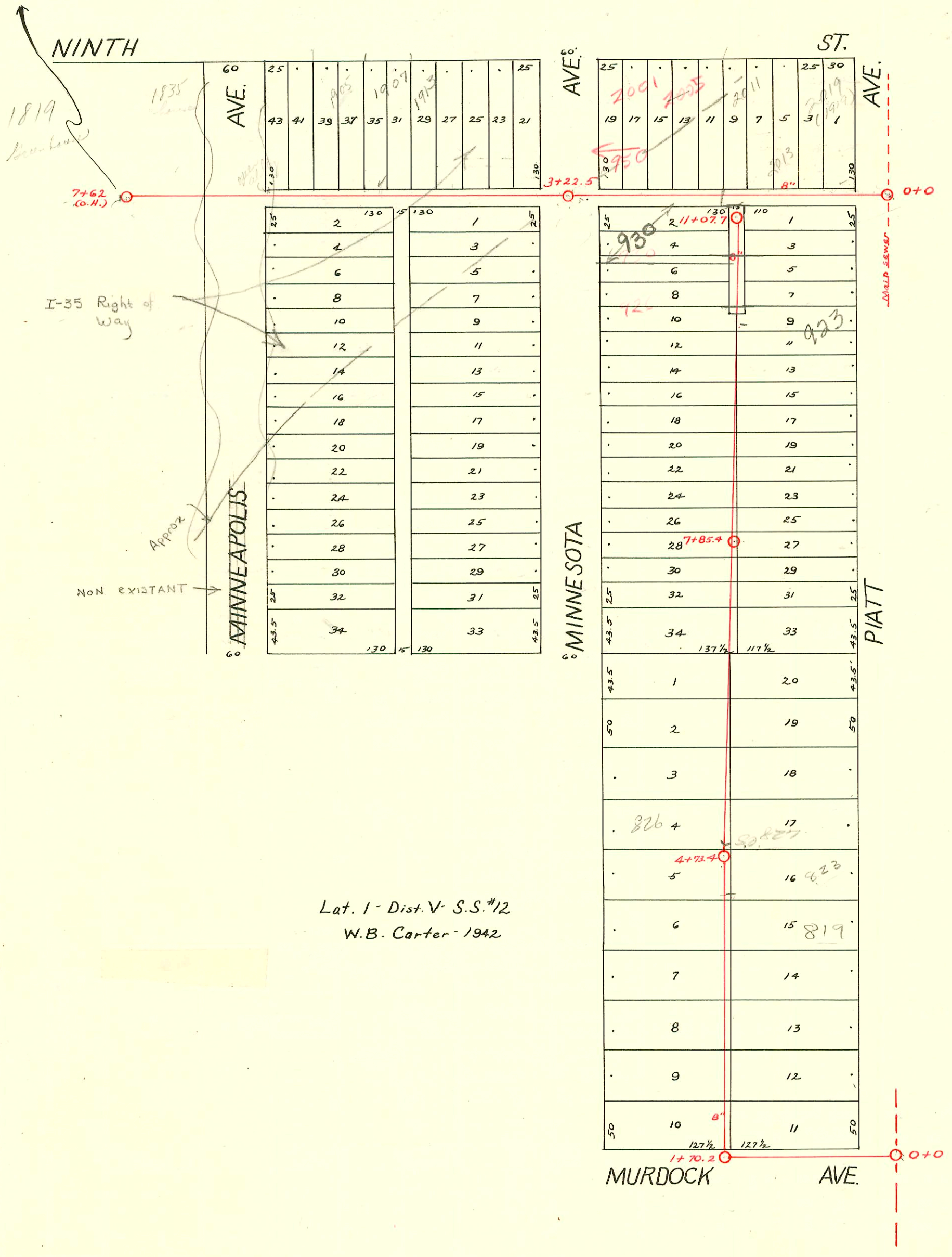


S.S. No. 12 - Dist. D  
1911

April 17, 1916 - Built by O. Sterling  
 $763 + 2\frac{1}{2}$  O.H. = 765.5 feet sewer at .33 = 252.62  
 14 Y's = 12.37  
 One M.H. 6.4 feet at 3.00 = 19.20  
 One M.H. cover = 6.09  
 Total 290.19

The above paid O. Sterling by Chas. P. Mueller with the understanding that if anyone else should want to connect to this sewer line, then that person or persons must pay to Mr. Mueller their proportion of the original cost of this sewer - \$20.00 per bldg. site.



Lat. 1 - Dist. V - S.S. #12  
W.B. Carter - 1942

CONSTRUCTION RECORD

SERVICE RECORD

Line in E & W Alley So. of 9th St.

| STATION | ELEVATION |        | Depth | MANHOLE  | 4-INCH "Y" BRANCHES |            | No. of Permit |            | House Number     |            | DATE OF PERMITS |            |
|---------|-----------|--------|-------|----------|---------------------|------------|---------------|------------|------------------|------------|-----------------|------------|
|         | Ground    | Grade  |       |          | North West          | South East | North West    | South East | North West       | South East | North West      | South East |
| 0       | 114.43    | 106.84 | 7.59  | 0+0      |                     |            |               |            |                  |            |                 |            |
| + 15    | 114.60    | 107.43 | 7.17  |          | 0 + 48.5            |            |               |            |                  |            |                 | 8-8-67     |
|         |           |        |       |          | + 99.5              |            |               |            |                  |            |                 | 1-27-65    |
| 1       | 114.82    | 107.60 | 7.22  |          | 1 + 49              |            |               |            |                  |            |                 | 7-12-23    |
|         |           |        |       |          | + 99                |            |               |            |                  |            |                 | 7-13-43    |
| 2       | 114.34    | 107.80 | 6.54  |          | 2 + 51              |            |               |            |                  |            |                 | 5-15-31    |
| 3       | 114.12    | 108.00 | 6.12  | 3 + 22.5 |                     |            |               |            |                  |            |                 | 8-8-67     |
|         |           |        |       |          | 3 + 62.5            |            |               |            |                  |            |                 | 5-22-28    |
| 4       | 113.88    | 108.20 | 5.68  |          | 4 + 12              |            |               |            |                  |            |                 |            |
|         |           |        |       |          | + 63                |            |               |            |                  |            |                 |            |
| 5       | 114.26    | 108.40 | 5.86  |          | 5 + 12.2            |            |               |            |                  |            |                 |            |
|         |           |        |       |          | + 61                |            |               |            |                  |            |                 |            |
| 6       | 114.22    | 108.60 | 5.62  |          | 6 + 06.7            |            |               |            |                  |            |                 |            |
|         |           |        |       |          | + 88                |            |               |            |                  |            |                 |            |
| 7       | 114.43    | 108.80 | 5.63  |          | 7 + 13.4            |            |               |            |                  |            |                 |            |
|         |           |        |       |          | 7 + 62.0 (6.H) + 60 |            |               |            |                  |            |                 |            |
| 0 + 0   | 111.20    | 106.30 | 4.90  | 0 + 0    |                     |            |               |            |                  |            |                 |            |
| 1 + 0   | 112.20    | 106.40 | 5.80  |          |                     |            |               |            |                  |            |                 |            |
|         |           |        |       |          | 1 + 70.2            |            |               |            |                  |            |                 |            |
|         |           |        |       |          | 1 + 83.1            | 1 + 80.1   | #1705         | #1695      | 802 N. Minnesota | 803 Piatt  | 5-6-42          | 5-6-42     |
| 2 + 0   | 112.20    | 107.53 | 4.67  |          | 2 + 11.8            | 2 + 08.8   |               |            |                  |            |                 |            |
|         |           |        |       |          | + 36.0              | + 33.0     | #1706         | #1696      | 806 N. Minnesota | 807 Piatt  | 5-6-42          | 5-6-42     |
|         |           |        |       |          | + 61.2              | + 58.2     |               |            |                  |            |                 | 7-22-82    |
|         |           |        |       |          | + 85.5              | + 82.5     | #1707         | #1697      | 810 N. Minnesota | 811 Piatt  | 5-6-42          | 5-6-42     |
| 3 + 0   | 112.40    | 107.63 | 4.77  |          | 3 + 12.4            | 3 + 09.4   |               |            |                  |            |                 |            |
|         |           |        |       |          | + 36.8              | + 33.8     | #1708         | #1698      | 814 N. Minnesota | 815 Piatt  | 5-6-42          | 5-6-42     |
|         |           |        |       |          | + 57.8              | + 54.8     |               |            |                  |            |                 |            |
|         |           |        |       |          | + 85.1              | + 82.1     | #1709         | #1699      | 818 N. Minnesota | 819 Piatt  | 5-6-42          | 5-6-42     |
| 4 + 0   | 112.90    | 107.73 | 5.17  |          | 4 + 08.9            | 4 + 05.9   |               |            |                  |            |                 |            |
|         |           |        |       |          | + 37.0              | + 34.0     | #1710         | #1700      | 822 N. Minnesota | 823 Piatt  | 5-6-42          | 5-6-42     |
|         |           |        |       |          | + 62.0              | + 59.0     |               |            |                  |            |                 |            |
|         |           |        |       |          | 4 + 73.4            |            |               |            |                  |            |                 |            |
|         |           |        |       |          | + 85.9              | 4 + 82.9   | #1711         | #1699      | 826 N. Minnesota | 827 Piatt  | 5-6-42          | 5-8-70     |
| 5 + 0   | 113.70    | 107.83 | 5.87  |          | 5 + 09.6            | 5 + 06.6   |               |            |                  |            |                 |            |
|         |           |        |       |          | + 37.5              | + 34.5     | #1712         | #1702      | 830 N. Minnesota | 831 Piatt  | 5-6-42          | 5-6-42     |
|         |           |        |       |          | + 62.1              | + 59.1     |               |            |                  |            |                 |            |
|         |           |        |       |          | + 85.6              | + 82.6     | #1713         | #1703      | 834 N. Minnesota | 835 Piatt  | 5-6-42          | 5-6-42     |
| 6 + 0   | 113.40    | 107.93 | 5.47  |          | 6 + 10.5            | 6 + 07.5   |               |            |                  |            |                 |            |
|         |           |        |       |          | + 37.7              | + 34.7     | #1714         | #1704      | 838 N. Minnesota | 839 Piatt  | 5-6-42          | 5-6-42     |
|         |           |        |       |          | + 61.9              | + 58.9     |               |            |                  |            |                 |            |
|         |           |        |       |          | + 85.5              | + 82.5     | #2261         |            | 844 N. Minnesota |            | 7-9-42          |            |
| 7 + 0   | 113.20    | 108.03 | 5.17  |          | 7 + 12.8            | 7 + 09.8   |               |            |                  |            |                 |            |
|         |           |        |       |          | + 43.6              | + 40.6     | #2259         | #2269      | 848 N. Minnesota | 903 Piatt  | 7-9-42          | 7-9-42     |
|         |           |        |       |          | + 71.0              | + 68.0     |               |            |                  |            |                 |            |
|         |           |        |       |          | 7 + 85.4            |            |               |            |                  |            |                 |            |
| 8 + 0   | 113.30    | 108.13 | 5.17  |          | 8 + 01.9            | 7 + 98.9   |               |            |                  |            |                 |            |
|         |           |        |       |          | + 29.7              | 8 + 26.7   | #2258         |            | 910 N. Minnesota | 911 Piatt  | 7-9-42          | 7-9-42     |
|         |           |        |       |          | + 59.9              | + 56.6     | #2257         | #2266      | 914 N. Minnesota | 915 Piatt  | 7-9-42          | 7-9-42     |
|         |           |        |       |          | + 87.0              | + 84.0     |               |            |                  |            |                 |            |
| 9 + 0   | 113.80    | 108.23 | 5.57  |          | 9 + 16.8            | 9 + 13.8   | #2256         |            | 918 N. Minnesota |            | 7-9-42          |            |
|         |           |        |       |          | + 44.6              | + 41.6     |               |            |                  |            |                 |            |
|         |           |        |       |          | + 74.9              | + 71.9     | #2255         | #2265      | 922 N. Minnesota | 919 Piatt  | 7-9-42          | 7-9-42     |
|         |           |        |       |          | + 99.6              | + 96.6     |               |            |                  |            |                 |            |
| 10 + 0  | 114.20    | 108.33 | 5.87  |          | 10 + 26.3           | 10 + 23.3  | #2254         | #2263      | 926 N. Minnesota | 927 Piatt  | 7-9-42          | 7-9-42     |
|         |           |        |       |          | + 51.0              | + 48.0     |               |            |                  |            |                 |            |
|         |           |        |       |          | 10 + 74.8           | + 71.8     | #2253         | #2262      | 930 N. Minnesota | 931 Piatt  | 7-9-42          | 7-9-42     |
| 11 + 0  | 114.30    | 108.43 | 5.87  |          | 11 + 02.3           | 10 + 99.3  |               |            |                  |            |                 |            |
|         |           | 108.44 |       |          | 11 + 07.7           |            |               |            |                  |            |                 |            |

2002-02134 8/10/2 930N Minnesota Wichita Pibg- Fredco Saddle 32.5's of MH 1107.7(10+75.2) 4" SCH 40 3V32

C 12191- 911 N. Minnesota (Park) - 6-4-79 (top 6758)

C 11724 - 1905 E 9th Seal off - 3-27-68 (5489)

Special fee pd. to Mueller by Della Jones  
 Special fee pd. to Mueller by S.T. Smith (Permit #279) 1907 E 9th  
 Special fee pd. to Mueller by Abbotts (Permit #988) 1917 E 9th  
 #3962 - Tapped at 2+48.5 - 2001 E 9th J.C. Hendrich - 8-6-41  
 #1728 - Tap - 1913 E 9th - Howard Shepherd - 9-9-44  
 #661 - Tap - 2013 E 9th - Frederick Piatt - 8-12-48  
 #B-367 - Tap - 2019 E 9th - Bradford City 11-7-63 (0+4)