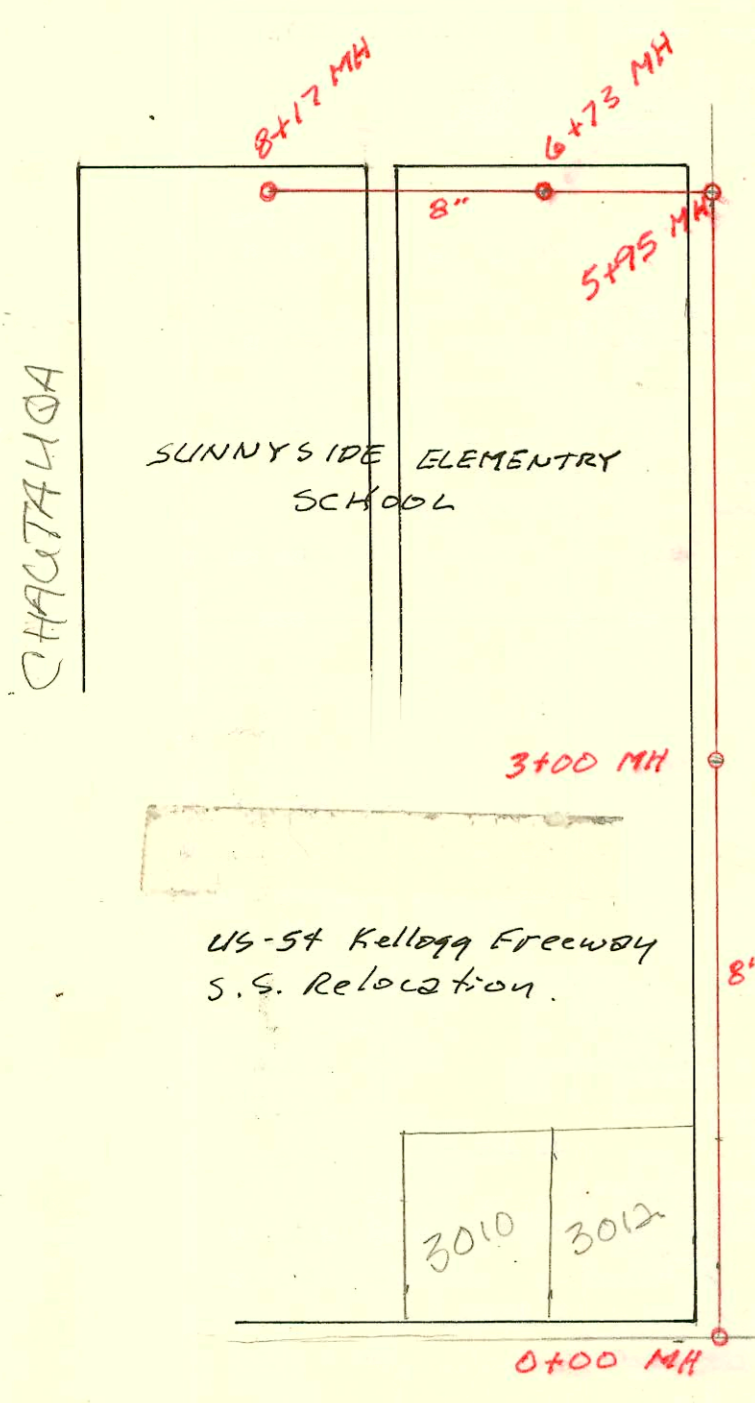


S.S. No. 12 - LAT. 12 - Dist. A  
1921



KELLOGG ST.

0+0 c. of M.H. is 22.5' So. of back of wk. on N. side of Kellogg & E. of Alley S.

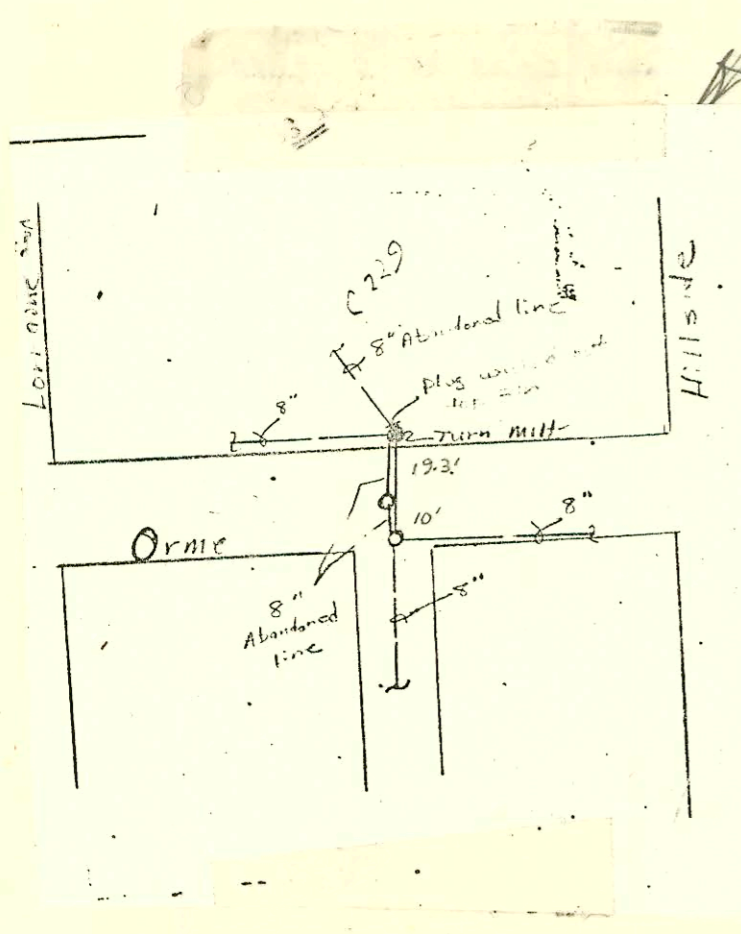
25	151	151	25
2		1	25
4		3	
6		5	
8		7	
10		9	
12		11	
14		13	511
16		15	
18		17	515
20		19	
22	BIK.	21	521
24		23	523
26		25	525
28		27	527
30		29	529
32		31	531
34		33	533
36		35	535
38		37	537
40		39	539
42		41	541
44		43	543
46		45	545
48		47	547
25	151	151	25

ABANDONED LINK

Area reworked by Kellogg

Private line 105' long westside of Alley - 142' So. of 0+0

1" = 100'



ORME ST.

6+67 - C-236

25	151	151	25
50		49	
52		51	
54		53	
56		55	
58		57	
60		59	
62		61	
64		63	
66		65	
68		67	
70		69	
72	BIK.	8	71
74		73	
76		75	
78		77	
80		79	
82		81	
84		83	
86		85	
88		87	
90		89	
92		91	
94		93	
96		95	
25	151	151	25

SUNNYSIDE

For E & W alley line in Orme, see P. 236.

GILBERT ST. Paper to C-23

CONSTRUCTION RECORD						SERVICE RECORD						
STATION	ELEVATION		Depth	MANHOLE	4-INCH "Y" BRANCHES		No. of Permit		House Number		DATE OF PERMITS	
	Ground	Grade			North West	South East	North West	South East	North West	South East	North West	South East
0+0		104.25	2	0+0		0+45						
					0+47.5	+70.2						
					+72.7	+96						
					+98.5							
1+0		104.35		1+21	1+23.5	1+21			3151 E Kellogg 509 S. Hillside		8-12-75 6-13-60 8-12-29	
					+48.9	+46.4			572 S. Lorraine		3-6-75 7-24-25	
					+74	+74.5			576 S. Lorraine		8-5-26 5-15-22	
					+99.1	+96.6			515 S. Hillside		7-7-75 6-1-26	
2+0		104.45		2+30.4	2+24.2	2+21.7			520 S. Lorraine		7-17-74 5-18-26	7-17-74 11-16-21
					+49.5	+47			521 S. Hillside			1-21-75
					+75.5	+73						
					+98.2							
3+0		104.55		3+00.7	3+15.4				526 S. Lorraine		7-17-74 6-2-26	
					+25.5							
					+50.8	+48.3			528 S. Lorraine		7-17-74 6-9-26	
					+76.3	+73.8			532 S. Lorraine		8-12-75 6-18-26	9-13-75 12-13-21
					+98.6				548 S. Hillside		7-17-74 6-10-28	
4+0		104.65		4+32.0	4+01.1	4+24.1						
					+26.6	+49.5						
					+52.0	+74.7						
					+77.2							
5+0		104.75		5+02.5	5+00				547 S. Hillside		8-12-75 5-16-23	
					+27.5	+25			544 S. Lorraine		7-17-74 11-24-23	8-27-74 11-24-23
					+53	+50.5			535 S. Hillside		8-77-74	10-16-74
					+78.2	+75.7			548 S. Lorraine		8-27-74 1-16-28	6-19-29
6+0		104.85		6+67	6+03	6+00.5						
					+28.5	+26						
					+97.0	+94.5						
					+72	+69.5						
7+0		104.95		7+22.0	7+19.5				608 S. Lorraine		5-6-26	
					+47.5	+45						
					+98							
8+0		105.05		8+89.5	8+23.5	+21			612 S. Lorraine		12-2-29	
					+48.5	+46						
					+73.5	+71			614 S. R. Lorraine		11-26-01 3-2-38	5-29-22
					+98.7	+96.2			622 S. Lorraine		4-15-29	2-9-22
9+0		105.15		9+24	9+21.5				626 S. Lorraine	631 S. Hillside	6-21-26	5-27-26
					+49.3	+46.8				629 S. Hillside		5-27-26
					+74.8	+72.3						
					+97.5							
10+0		105.25		10+00	10+22.5					639 S. Hillside		7-5-96
					+25	+47.4						
					+49.9	10+73						
					+75.5	+93.6						
					+96.1	10+98.5						
11+0		105.35		11+00	11+26.1	11+23.6			642 S. Lorraine		3-6-37	
					+51.5	+49			640 S. Lorraine		7-8-30	
					+76.5	11+74			643 S. Hillside			5-4-83 5-14-54
					+99							
12+0		105.45	3 ft.	12+84.5	12+01.5				652 S. R. Lorraine	see below	11-18-02 8-23-26	
					+26.9	12+24.4						5-5-22
					+52.3	+49.8						
					+77.5	+75						

US-54 - Kellogg Freeway - S.S. Relocation

0+00	1297.00	1287.83	9.17	0+00
3+00	1297.50	1289.79	7.5	3+00
5+95	1305.20	1291.38	13.8	5+95
6+73	1298.00	1291.70	6.3	6+73
8+17	1298.00	1292.36	5.6	8+17

2002-03067 11/13/02 652 S Lorraine Wichita ex - city wye repair 4" Precast 83' N of MH (12101.5) CO @ house, CO @ alley, 20' 22' alley cut

965957.1 4-26-96 637 S Hillside - Henning - s/o 1345' S. of MH

965958.7 4-26-96 639 S Hillside - Henning - s/o 159' S of MH

S.O. C47049 #803 3103 E Kellogg 4-14-24 - Private line conn. - West Side Piby Co. - 10-16-74 - al Henning  
 #752-601 S Hillside 9-1-26 - Conn. to main in Orme - Adenover  
 #808 - M.H. Tap - 602 S. Lorraine - 9-22-26 - J.C. Hendricks  
 #268 - Tap - 656 S. Lorraine - 4-15-27 - eye test - on 3/15/02 shows conn to main in Gilbert (C23)  
 #1063 - Tap - 630 S. Lorraine - 12-1-27  
 #905 - Tap - 636 S. Lorraine - 3-28-28  
 #209 - Tap - 525 S. Hillside - 3-20-29 - 9-12-75 - al Henning  
 #1329 - Tap - 3119 E. Orme - Wayne H. Warren - 9-19-29  
 #405 - Private line - 3111 E. Orme - Conner & Ripstra - 7-22-31  
 #16405 - Seal off - 3103 E. Kellogg - 11-26-62 - Henning  
 C50192 - Seal off - 3109 E. Kellogg - 7-7-75 - al Henning  
 C50819 - Seal off 536 S. Lorraine 8-12-75 - al Henning