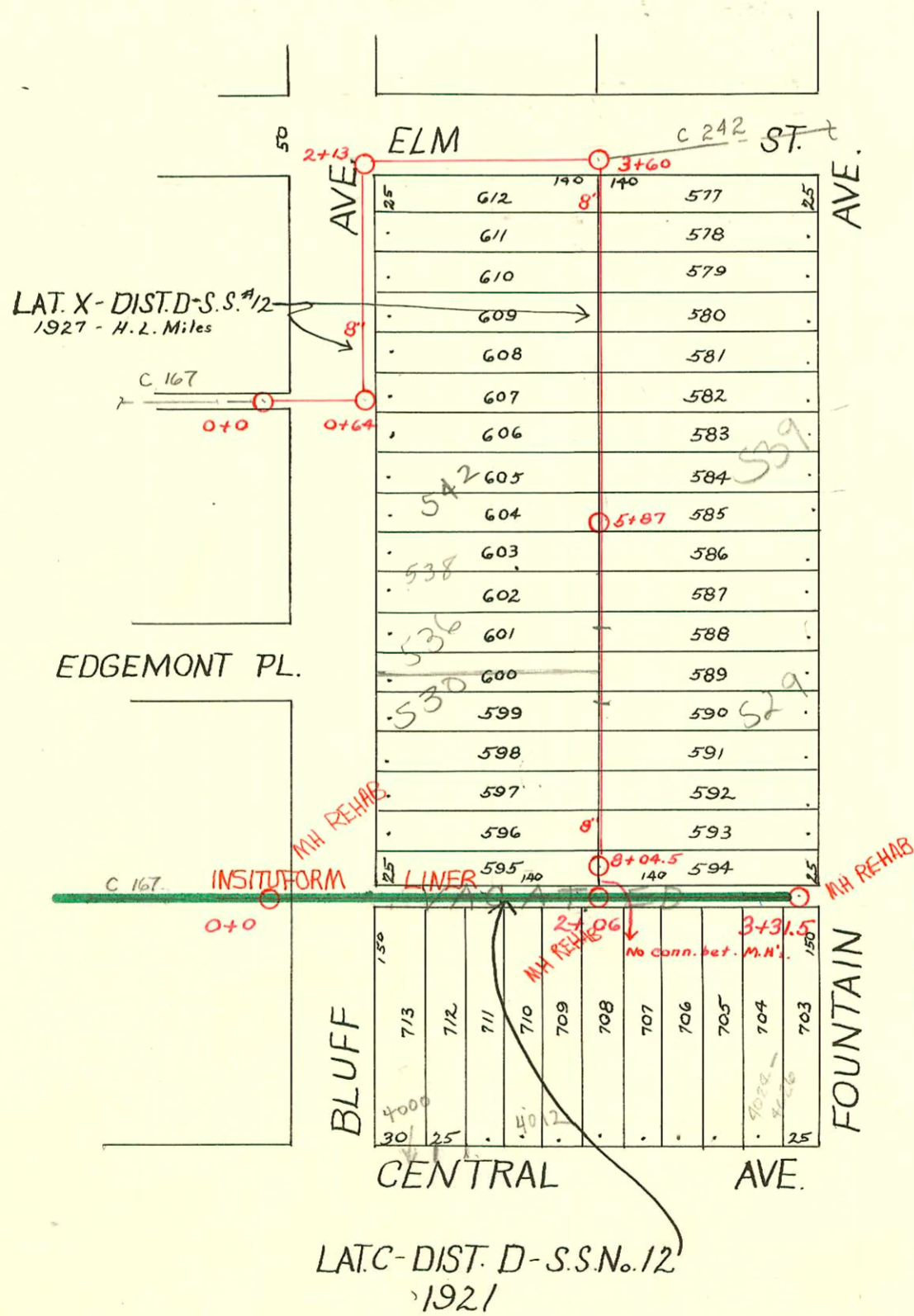


S.S. No. 12 - Dist. D
1911



1992 SANITARY SEWER REHABILITATION
PROGRAM-PHASE I
PROJ. NO. 468-82220 (631879)
BUILT BY INSITUFORM PLAINS, INC.
BOOKED 3-17-93 FROM AS BUILTS

RECONNECTIONS

STATION	ADDRESS	DIRECTION
3+05.3 (3+06.9)	4024 & 4026 E. Central	South
2+75.6	521 Fountain	North
2+55.7	4020 E. Central	South
2+00.8	4016 E. Central	South
1+73.7	4012 E. Central	South
1+19.7	518 Bluff	North
1+06.8	4006 E. Central	South
0+87.3	4000 E. Central	South

2004-01073 -

CONSTRUCTION RECORD

SERVICE RECORD

Line in Alley N. of Central, Bluff to Fountain

Bet. Bluff & Fountain Alley No. of Central to Elm, etc.

STATION	ELEVATION		Depth	MANHOLE	4-INCH "Y" BRANCHES		No. of Permit		House Number		DATE OF PERMITS	
	Ground	Grade			North West	South East	North West	South East	North West	South East	North West	South East
0+0	178.34	170.99	7.35	0+0								
1+0	182.33	173.89	8.44		0+77.5	0+80	#838		528 N. Bluff		7-15-22	
2+0	184.60	176.79	7.81		1+00.9	1+03.4	#847	#1005			10-4-26	8-15-22
3+0	187.20	179.69	7.51	2+06		+31.8		#2448	4020 E. Central		10-30-24	
+74	189.00	181.65	7.35			+72	#310					4-12-22
						+99.6		#990	523 N. Fountain		9-13-28	
					2+70.5	+73	#814					5-29-23
					2+97.5	3+00						
					3+31.5	+25						
0+0	176.66	170.12	6.54	0+0 = Alley N. of Edgemont		0+73 E.						
0+64	176.54	170.25	6.29	M.H. on E. side of Bluff N. of Edgemont		+98.8 E.						
1+0	176.27	170.32	5.95			1+24.3 E.	#608				7-19-27	
2+0	176.11	170.52	5.59	M.H. at S.E. cor. Bluff & Elm	2+13	+49.7 E.						
2+13	175.94	170.55	5.39			+75. E.						
3+0	176.51	170.72	5.79	M.H. at S. side of Elm, E. of Bluff	3+60	2+02.7 E.						
3+60	177.36	170.84	6.52			2+74.5 So.						
4+0	179.13	171.21	7.92		3+73	3+70.5	#798		559 N. Fountain		7-27-28	
5+0	181.25	172.35	8.90		+98	+95.5	#772		553 N. Fountain		7-18-28	
6+0	182.81	173.49	9.32		4+23	4+20.5	#575		550 N. Bluff		5-28-28	
7+0	183.70	174.63	9.07		4+47.9	+45.4	#801	#893	546 N. Bluff	539 N. Fountain	4-7-26	8-22-28
8+0	185.54	175.77	9.77		4+74.2	+71.7	#831		534 N. Bluff	539 N. Fountain	6-23-27	8-6-28
8+04.5	186.01	175.82	10.19	8+04.5	4+99.2	+96.7	#520	#335				
					5+49.9	+47.4						
					5+87	+75.4						
					6+03.5	6+01	#497		535 N. Fountain		5-10-28	
					+28.9	+26.4	#523	#314	542 N. Bluff	527 N. Fountain	6-23-27	4-6-29
					6+54.9	6+52.4	#525	#546	520 N. Bluff	525 N. Fountain	6-23-27	6-22-28
					+80	+77.5	#1143		518 N. Bluff		12-28-27	
					7+04.9	7+02.4						
					+30.8	+28.4						
					+57	+52.5						
					+79.5	+77						
					+99.5	+97						

96-2321-7 2-26-96 536 N Bluff - Arrowhead - tap repaired - 6440 (53 ft sq. M.H.)

95-4192-7 3-28-95 536 N Bluff - Arrowhead - (Permit voided with no work done by this P.L.)

96-1450-536 N. Bluff - Jack J. ... 6-7-49 (6+37)

95-4927-#453 - Top - 536 N. Bluff - 6-7-49 - Tess Hanna
 C49414 - Repair - 538 Bluff - 7 - Service - 214-75