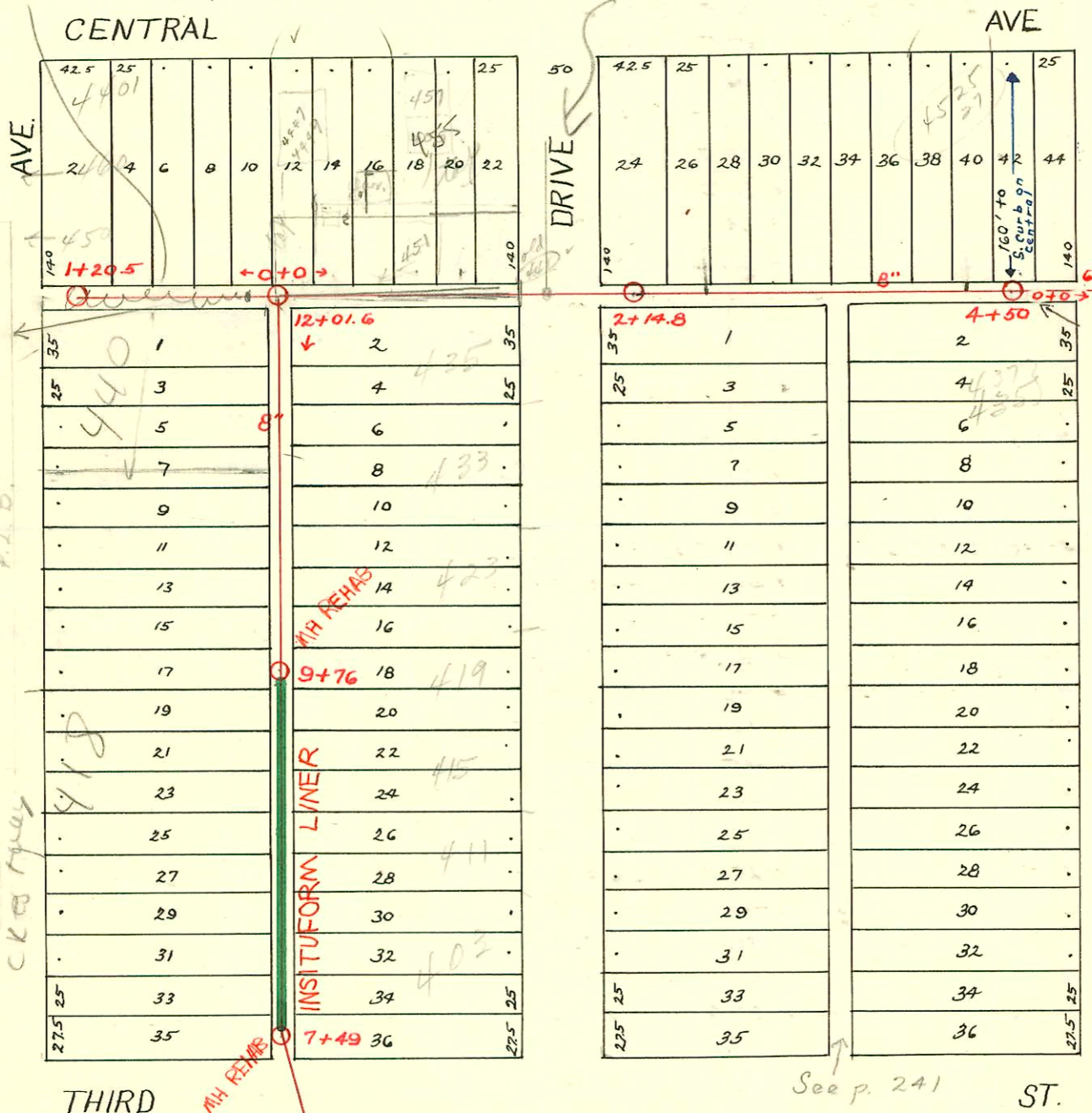
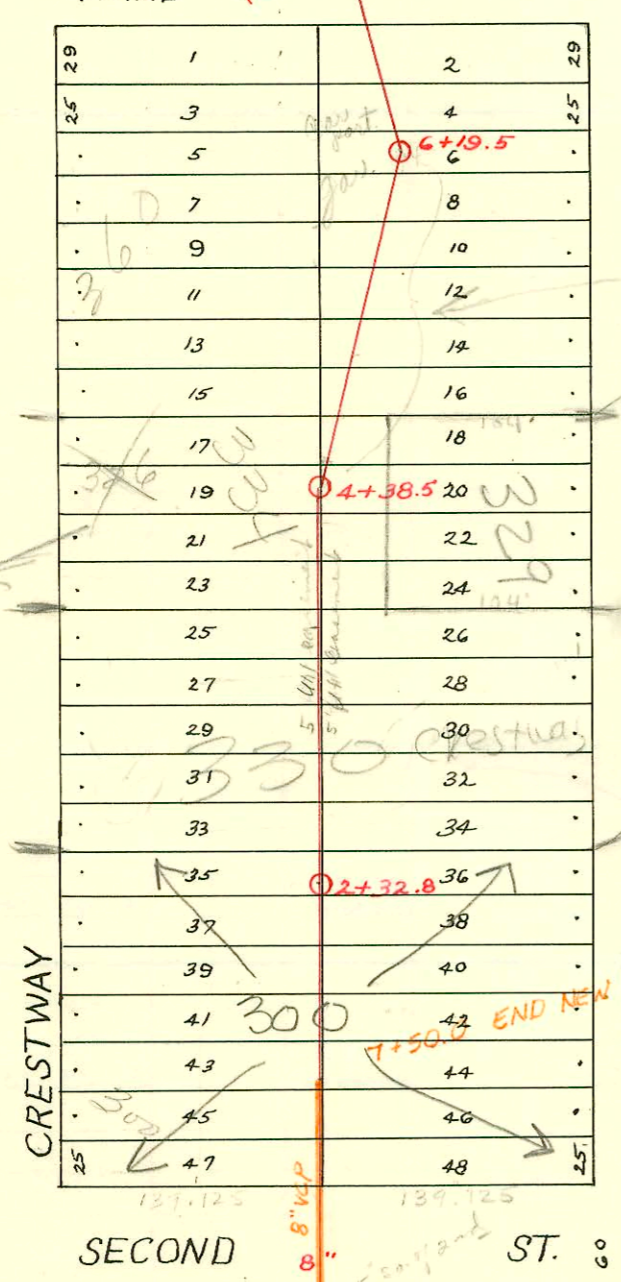


This line to be abandoned back to MTH side (12701-6) and sewer line (12701-6) Recycled Line for All 12701-6
 455-57 N Terrace
 Permission TO go on this comm & new tap to line
 C-U Must slot in main slot
 811044 Pen Calver forest

See utility F.M.L. from Calver Re: 445
 East end of sewer line (about 20') moved into deeper ditch for private connection - going West out of M.H. 12+01.6 - May-1939. Must be replaced when connections are made after ditch has settled.



4605
 2. Central
 Permit # 16302
 Seal off - 10-30-62
 See page 44
 160' to S. curb on Central
 6" Private line
 Yet 1+28
 1+30 (O.H.)
 LINE PLUGGED BY SEWER MAINT. 7-7-71 AT 4+50 M.H.



334 N Crestway
 check with identity before issuing permits
 2/10/92
 Bn

1992 SANITARY SEWER REHABILITATION PROGRAM - PHASE I
 PROJ. NO. 468-82220 (631879)
 BUILT BY INSITUFORM PLAINS, INC.
 BOOKED 3-17-93 FROM AS BUILTS

RECONNECTIONS

STATION	ADDRESS	DIRECTION
9+68.5	419 Terrace	East
9+38.3	418 Crestway	West
9+29.4	415 Terrace	East
8+76.4	411 Terrace	East
8+18.8	400 Crestway	West
7+61.1	4422 E. 3rd St.	East

Lat 17 - Dist A S.S. #12
 1922

6+20.5 M.H. TO 'A' END INSITUFORM LINER SOUTH, BASIN B' VCP NORTH
 SEE SHEET C-233 FOR RECONST.

SWR2080 00845 4/3/06 450 N Crestway Wichita Exc
 & SWR2009-02607-10/27/05 455 N Terrace - Perma-liner went to tap - 4' 3" on 40" PVC (2) Dir (10). Dikes Plumbing

CONSTRUCTION RECORD

SERVICE RECORD

STATION	ELEVATION		Depth	MANHOLE	4-INCH "Y" BRANCHES		No. of Permit		House Number		DATE OF PERMITS	
	Ground	Grade			North West	South East	North West	South East	North West	South East	North West	South East
0+0	188.05	178.53	9.52	0+0	0+82	0+84.5						
1+0	189.84	178.63	11.21		1+07.5	1+10						
2+0	191.32	178.73	12.59	2+32.8	2+10.5	2+13						
3+0	191.35	178.83	12.52		3+13.5	3+16						
4+0	189.76	178.93	10.83	4+38.5	4+17	4+19.5						
5+0	190.54	179.05	11.49		5+24.5	+27						
6+0	192.25	179.15	13.10	6+19.5	6+07.5	6+10						
7+10	192.68	179.27	13.41	7+49	7+73.5	7+76						
8+10	194.80	179.37	15.43		8+12	8+24.3						
9+10	193.98	179.47	14.51		9+21.7	9+24.2						
10+10	194.47	179.57	14.90		10+24.7	+27.2						
11+10	194.74	179.67	15.07		11+01.5	11+04						
12+01.6	195.14	179.76	15.38	12+01.6	11+46	11+48.5						
Alley So. of Central Line West of Sta. 12+01.6 or 0+0	0+0	195.40	188.67	6.73	0+0	0+13						
	+50	195.99	188.99	7.00		0+37.5						
	1+20	196.75	189.42	7.33	1+20.5	1+12						
Line E. from Sta. 12+01.6 or 0+0	0+0	195.40	179.80	15.60	0+0	0+14.3						
	1+0	193.70	179.90	13.80		1+16.7						
	2+0	192.15	180.05	12.10	2+14.8	2+06.6	2+09.1					
	3+0	191.00	180.15	10.85		3+10	3+12.5					
	4+0	189.37	180.25	9.12	4+21	4+23.5						
	+50	189.03	180.32	8.71	4+50	+43.8	+46.3					
<p>2003-01845-7/16/03-300 Crestway - McCullough - Rerouted for swimming pool (line at angle heading SW toward main - made connection under fence on lot) 1H45, 1H22, 3U45, 1U22, 1-WYC - NO MISC</p> <p>2000-02714-12/14/00 - AE HENNINS - 300 N Crestway</p>												

LAT. 17, Dist. A, S.S. #12

0+0 To 1+46
Sta 17 Dist A, S.S. #12

(455) #47 - Top - 4447 E Central - 3-11-36 - A.W. Dorrance - allow
 #48 - Top - 445 N Terrace Dr. - 3-11-36 - A.W. Dorrance
 #906 - Top at 3+76 - 449 N Pershing - 6-7-38 - C.R. Alexander
 #1509 - 445 N Crestway - 5-1-39 - Private line tapped into M.H. 12+01.6 - W.W. Pray
 #2043 - Top Private line from 445 N Crestway - 450 N Crestway - 10-13-52 - Simmons Pkg.
 #4375 - Top - 4442 E. 3rd - 4-16-51 - Pray Bros.
 B-807 - Top - 329 N Terrace - Yarn Lippold - 2-7-64 - top 4+23.5
 Extension 3854 - 440 N Crestway - 7-13-72 - AE Hennins (1+46)
 (Swim Pool)