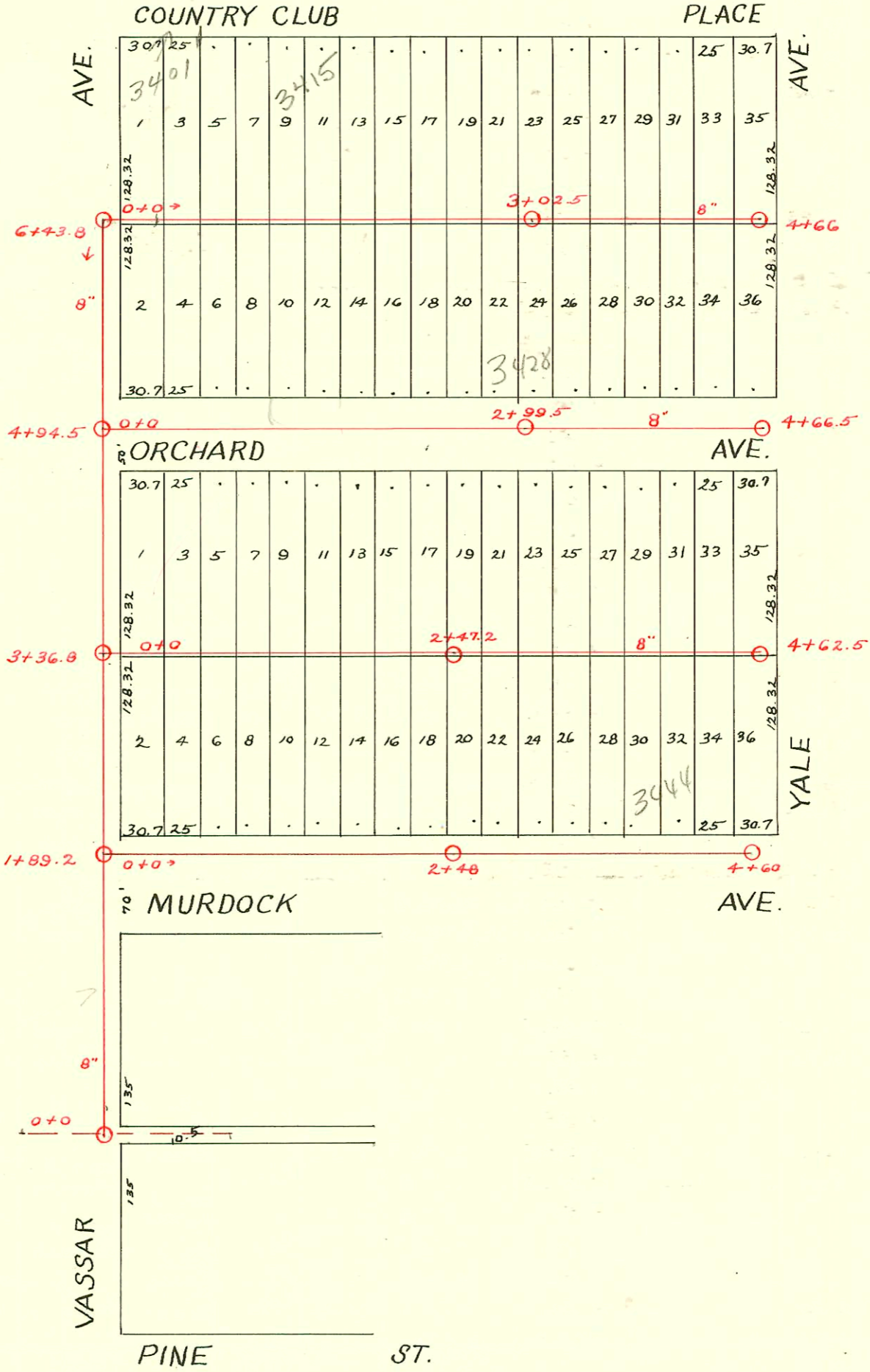


LAT. H - DIST. D - S.S. No. 12  
1923



- #89-Top - 3444 Orchard - 2-12-27
- #160-Top - 3424 Orchard - 2-23-28
- #967-Top - 3428 Orchard - 9-7-28
- #200-Top - 3412 Orchard - 9-19-29
- #990-Top at M.H. 4+66 - Wichita Country Club - 11-4-30 - W.A. Gittich
- #100-Top - 3436 Orchard - 5-8-35 - V.H. Patton
- #366-Top - 3402 Orchard - 7-22-37 - H.P. Dunaway
- #597-Top - 3433 Country Club - 11-13-37 - W.P. Hayes

CONSTRUCTION RECORD

SERVICE RECORD

LINE BET. ORCHARD & COUNTRY CLUB PLACE

STATION	ELEVATION		Depth	MANHOLE	4-INCH "Y" BRANCHES		No. of Permit		House Number		DATE OF PERMITS	
	Ground	Grade			North West	South East	North West	South East	North West	South East	North West	South East
0+0		163.80		0+0	0+24.3							
					+47			#942	3401 Country Club Pl.		11-3-26	
					+71			#338	3405 Country Club Pl.		6-8-31	
					+92.5			#118	3415 Country Club Pl.		4-1-37	
1+0	168.93	164.00	4.93		1+14.5			#3919	3419 Country Club Pl.		7-25-41	
					+38.5			#995	3425 Country Club Pl.		11-6-30	
					+61			#2499	3429 Country Club Pl.		8-10-42	
					+84			#376	3431 Country Club Pl.		7-28-37	
2+0	167.99	164.20	3.79		2+07			#1801			12-7-23	
					+29.7			#524	3441 Country Club Pl.		5-9-29	
					+53							
					+78							
				3+02.5	2+99							
3+0	169.22	164.40	4.82		3+21.4							
					+44							
					+67							
					+89							
4+0	171.05	166.60	4.45		4+11.3							
					+35							
+66	173.19	168.05	5.14	4+66	+60							

LINE IN ORCHARD, 20'S. of NO. LINE OF STREET

0+0	166.38	160.50	5.88	0+0	0+26.5							
					+46.4			#287			2-25-24	
					+73.7							
					+96.8							
1+0	165.67	160.70	4.97		1+19							
					+42							
					+65							
					+89							
2+0	165.30	160.90	4.40		2+12.3							
					+35							
					+60							
					+88							
				2+99.5								
3+0	165.91	161.10	4.81		3+12							
					+37.8							
					+60.8							
					+83.8							
4+0	167.52	162.90	4.62		4+06							
					+27							
+66.8	168.84	164.07	4.77	4+66.5	+52							

LINE BET. MURDOCK & ORCHARD

0+0	162.53	156.9	5.63	0+0	0+23							
					+44							
					+69	0+63.3	10759		3400 E. Orchard		4-20-84	
					+91							
1+0	162.07	157.40	4.67		1+14.5							
					+37							
					+60							
					+83							
2+0	163.37	157.90	5.47		2+05.7							
				2+47.2	+27.5							
					+53							
					+76							
					+99							
3+0	162.86	158.65	4.21		3+20							
					+44							
					+66							
					+90							
4+0	165.30	159.65	5.65		4+12.8							
					+35.5			#232	3437 Orchard		3-18-25	
+62.5	167.32	160.30	7.02	4+62.5	+58							

LINE IN MURDOCK, 3' N. of N. CURB

0+0	158.81	154.00	4.81	0+0	0+22.2							
					+47							
					+68.6			#72	3408 E. Murdock		2-13-25	
					+91.3							
1+0	159.97	155.10	4.87		1+13							
					+36							
					+58.5							
					+81							
2+0	161.17	156.20	4.97		2+03.5							
				2+48	+25							
					+51							
					+75							
3+0	162.04	157.30	4.74		+99							
					3+21.5							
					+44.6							
					+68							
					+90			#350	3444 E. Murdock		4-8-25	
4+0	163.25	158.40	4.85		4+12.5							
					+36.5							
+60	163.95	159.12	4.83	4+60	+54							