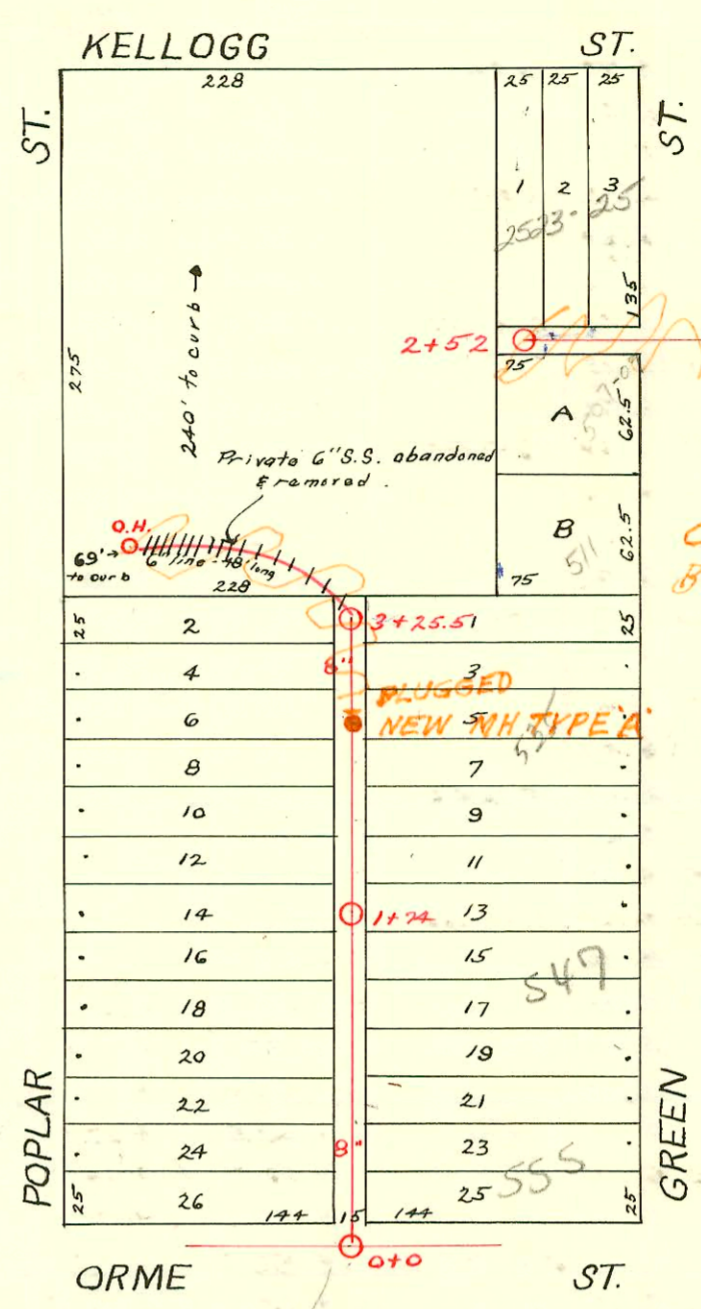
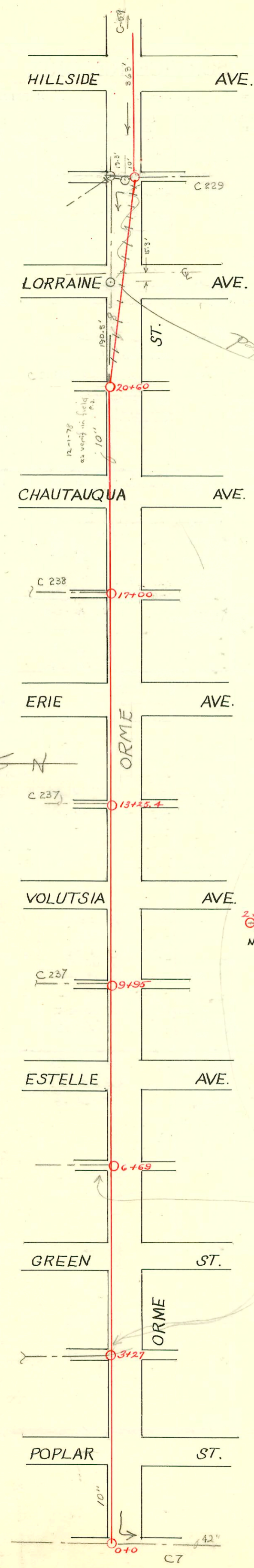
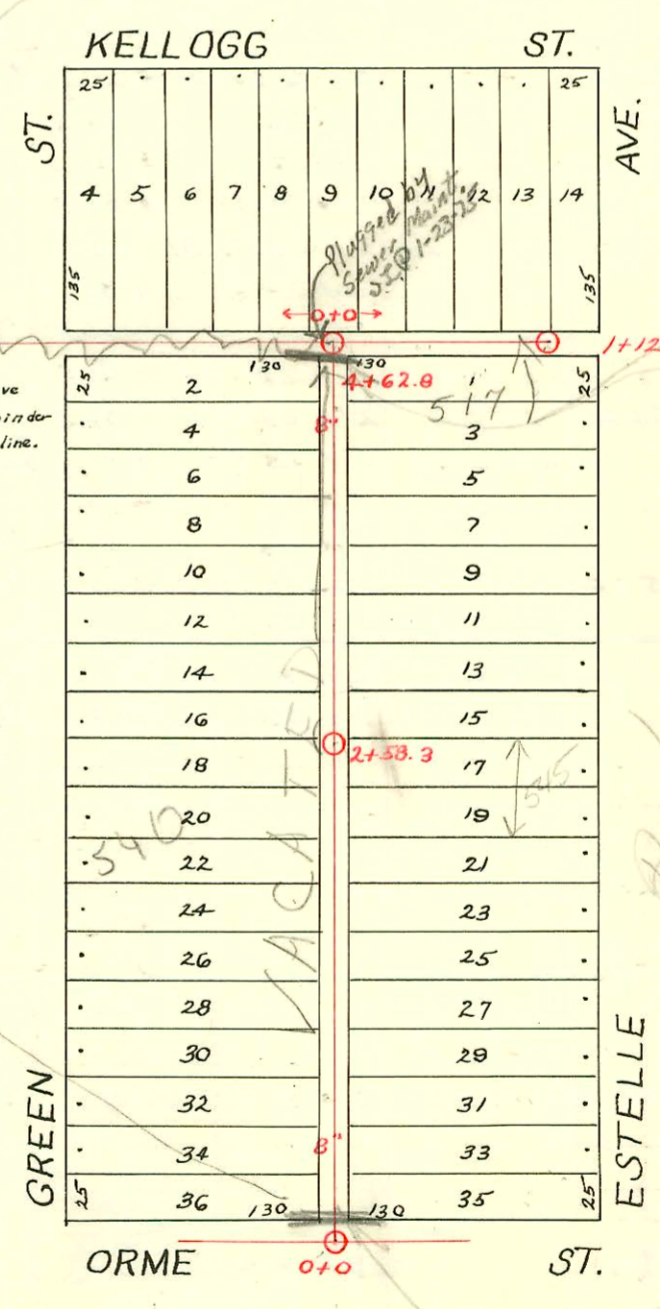


DIST. 1-S.S. No. 12  
1923



Note: See below for remainder of this line.

CHANGES BY STATE HWY DEPT  
BOOKED 8-20-77 FROM AS BUILT PLAN



Note: See above for remainder of this line.

Due to condition of pipe use extreme caution when excavation when pipe cannot be rep. to this line  
Remember to be present when exc. is to commence to command  
11-19-68  
11-19-68

2001-00503-31801-547 S Green-Padgett Exc-4" sc440-wye repair-58' s of MH 1+74 (1+16)- Replace entire line- 2v22, 2+22

CONSTRUCTION RECORD

SERVICE RECORD

Sub-Main in ORME ST.

STATION	ELEVATION		Depth	MANHOLE	4-INCH "Y" BRANCHES		No. of Permit		House Number		DATE OF PERMITS		
	Ground	Grade			North West	South East	North West	South East	North West	South East	North West	South East	
0+0	105.92	97.17	8.75	0+0									
1+0	105.80	97.27	8.53										
2+0	105.97	97.37	8.60										
3+0	106.29	97.47	8.82	3+27									
4+0	106.42	97.57	8.85										
5+0	106.15	97.67	8.48										
6+0	106.68	98.17	7.98										
7+0	107.55	98.27	8.41	6+69									
8+0	107.55	98.37	9.18										
9+0	108.02	98.47	9.55										
10+0	107.91	98.57	9.34	9+95									
11+0	108.25	98.67	9.58										
12+0	108.58	98.77	9.81										
13+0	108.17	98.87	9.30										
14+0	108.42	98.97	9.45	13+25.4									
15+0	108.68	99.07	9.61										
16+0	108.68	99.17	9.46										
17+0	108.63	99.27	9.46										
18+0	109.28	99.37	9.91	17+00									
19+0	109.32	99.47	9.85										
20+0	109.18	99.57	9.61										
21+0	109.70	99.67	10.03	20+60									
21+0	109.47	99.77	9.70										
LINE NO. 0+0	106.41	98.60	7.81	0+0	0+19	Sea off of 13	0+16.5	#102	533 S. Green	see below for NK	3-6-01	3-4-29	
BET. POPLAR & GREEN					+45	+42.5							
					+69.5	+67		#1028	545 S. Green		9-21-28		
					+98.9	+91.4		#1300	552 S. Green	5-2-83	3-6-01		
1+0	105.70	98.90	6.80		1+18.5	4" SCH 40 1+16		#1015	547 S. R. Green	12-12-28	3-7-01	3-8-01	
					+43.5	+41		#1300	547 S. R. Green	see next pg	5-11-39		
					1+74	+68.5	1+66	#766	537 S. Poplar		9-8-26	5-19-24	
2+0	105.87	99.20	6.67		+94	+91.5		#1246	538 S. Poplar	10-30-73	9-2-70	5-31-24	
					2+18.7	2+16.2		#1246	538 S. Poplar				
					+44.2	+41.7							
					+69	+66.5							
3+0	105.94	99.50	6.44		+93.7	+91.2		#1185	530 S. Poplar	9-5-72	11-2-38		
+30	106.14	99.57	6.57	3+25.5	3+18.5	3+16		#12	529 S. Green		1-6-27		
					+40.5	+29		#12	511 S. Green		3-22-72		
LINE BET. GREEN & ESTELLE	0+0	107.34	99.00	8.34	0+0	0+25.8	0+23.3	#468	538 S. Green	541 S. Estelle	9-17-31	6-16-26	
						+49.8	+47.3	#2376	537 S. Estelle	534 S. Estelle		5-6-48	
						+73.8	+71.3	#553	534 S. Green	531 S. Estelle	12-14-31	6-22-26	
						+99.3	+96.8	#2582	533 S. Estelle	527 S. Estelle		8-16-40	
1+0	108.02	99.30	8.72		1+24.1	1+21.6		#500	527 S. Estelle			6-16-26	
					+48.8	+46.3			544 S. Green		3-25-38		
					+73.8	+71.3		#774					
					+98.8	+96.3		#219	543 S. Estelle		4-13-00	3-19-25	
2+0	107.35	99.60	7.75		2+24	2+21.5		#271	540 S. Green	535 S. Estelle	4-16-27	3-4-25	
					2+58.3	+48.8	+46.3						
					+74.3	+71.8		#586	536 S. Green	531 S. Estelle	7-9-26	3-20-26	
					+98.8	+96.3		#775	524 S. Green		3-7-25		
3+0	107.74	99.90	7.84		3+24.3	3+21.8		#475	527 S. Estelle			6-8-26	
					+50.3	+47.8		#474	520 S. Green		5-5-25	5-5-25	
					+74.8	+72.3		#42	523 S. Estelle		6-16-72	1-18-28	
					+99.3	+96.8		#1035	516 S. Green	517 S. Estelle	4-28-52	(see 5 main)	
4+0	107.08	100.20	6.88		4+25.1	4+22.6		#2492	516 S. Green	517 S. Estelle	11-6-24	6-8-26	
+62.8	106.70	100.38	6.32	4+62.8	+50.4	+47.9							
LINE IN ALLEY So. of KELLOGG FROM ESTELLE TO 75' W. of GREEN.	0+0	106.70	100.50	6.20	0+0	0+13.8 N.		#1414	2623 E. Kellogg		6-17-24		
	+30	106.79	100.60	6.19		+39 N.		#2708	2625 E. Kellogg		9-21-42		
						+64 N.		#1340	2647 E. Kellogg		6-19-50		
	+80	106.73	100.75	5.98		+90 N.							
						1+04.3 N.		#1436	2625 E. Kellogg		12-27-72	6-19-24	
1+12	106.95	100.85	6.10	1+12		+12 N.							
0+0	106.70	100.50	6.20	0+0	0+21 N.			#947	2621 E. Kellogg		4-25-24		
+25	106.72	100.59	6.13		+46 N.								
+75	106.23	100.74	5.49		+71 N.								
1+25	106.40	100.89	5.51		+96 N.			#524	2601 E. Kellogg		5-18-25		
+75	105.92	101.04	4.88		1+21 N.								
2+25	106.47	101.19	5.28		+99 N.								
+50	106.59	101.34	5.25		2+25 N.			#926	2525 E. Kellogg		4-23-24	11-6-72	
					2+52	+55 N.	+46.5 S.		#1261	507 S. Green		11-20-25	

#8 Tap - 2603 E. Kellogg - 2-3-54 - Thompson Pibg. (31095 - Seal off - 3-22-72 - at Henning - 0+30)

#6363 Tap - 2621 E. Kellogg - 9-8-53 - Cherty Pibg. (336480 - S.O. 2617-21 E. Kellogg - 1-2-72 (0+13.8))

#2887 Tap - 525 S. Estelle - 10-21-52 - Art Prosser

#5783 Tap - 547 S. Estelle - 9-12-51 - Kendall Pibg.

#92 Tap - 577 S. Estelle - 2-26-31 - George Sargent - Tapped into E/W line in alley (0+78)

#208 Tap - 2577 E. Kellogg - 4-21-31 - F.J. Adenquer - Went into M.H. 3+25.5 - S.O. C34678 9-5-72 at Henning

#52 Tap - 556 S. Poplar - 2-24-37 - W.P. Hayes

#3787 Tap - at 0+80 - 511 S. Estelle - 7-8-41 - Bryan Pibg. Co. (C31104 - Seal off 3-22-72 - at Henning)

#491 Tap - 722 S. Poplar - 10-27-47 - M.L. Lansdowne

#2970 Tap - 2525 E. Kellogg - 4-23-46 - Cherry Pibg. Co. (see above C37266 (S.O. together))