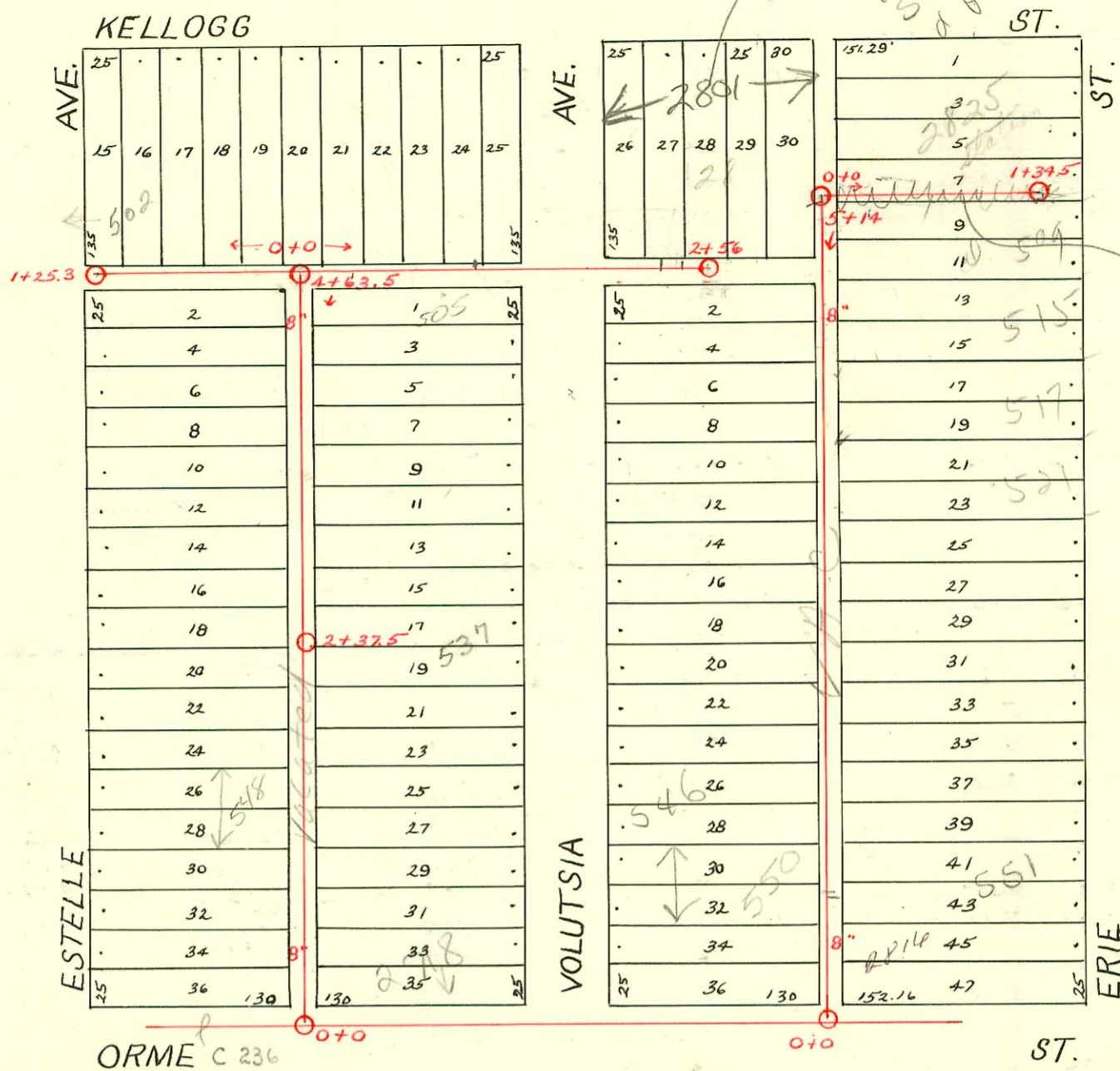


DIST. 1 - S.S. No. 12
1923

237 A

2801 F Kellogg -
New shell Bldg -
No not issue sev
permits until OPA plans
submitted for review
a OPA permit
BSK
4/15/04



Line abandoned
under Rehab Project
MTA Oreo (5066089)
Rehab with 4" stub
N/A to serve
corner lot
Bett
5/24/10

CONSTRUCTION RECORD

SERVICE RECORD

LINE N. of
ORME BET.
VOLUTSIA &
ESTELLE

LINE IN
ALLEY SO.
OF KELLOGG

LINE BET.
VOLUTSIA &
ERIE

LINE N. of
ORME BET.
VOLUTSIA &
ESTELLE

STATION	ELEVATION		Depth	MANHOLE	4-INCH "Y" BRANCHES		No. of Permit		House Number		DATE OF PERMITS			
	Ground	Grade			North West	South East	North West	South East	North West	South East	North West	South East	North West	South East
0+0	108.88	100.00	8.88	0+0	0+26.2	0+23.7	#1356	#2499	2718 E. Orme		8/19/17	11-30-15		
					+51.7	+49.2	#483		552 S. Estelle		5-2-29			
					+76.2	+73.7	#157		541 S. Volutsia		9-7-94	3-5-25		
					1+01.2	+98.7	#1419				6-17-24			
1+0	108.19	100.30	7.89		+26.9	1+24.4	#188		547 S. Volutsia			3-12-30		
					+49.6	+47.1	#615					3-31-24		
					+74.2	+71.7	#405					3-6-24		
					2+00.2	+97.7	#83		526 S. Estelle		2-5-26			
2+0	107.52	100.60	6.92		+22.2	2+19.7	#1328	#700	538 S. Estelle		12-11-25	8-14-26		
				2+37.5	+47.5	+45								
					+73	+70.5	#712		540 S. Estelle		8-18-26			
					+98	+95.5	#1518		531 S. Volutsia			7-1-24		
					3+22.8	3+20.3	#325		526 S. Estelle		4-3-28			
					+49.8	+47.3			525 S. Volutsia			7-5-24		
					+73.2	+70.7			523 S. Volutsia			4-27-25		
					+97.2	+94.7			523 S. Volutsia			11-22-23		
4+0	108.02	101.20	6.82		4+25.2	4+22.7	#1140				8-1-23			
+65	107.22	101.40	5.82	4+63.5	+50.2	+47.7								
0+0	107.15	101.50	5.65	0+0	0+29		#2509	#6	2715 E. Kellogg	505 S. Volutsia	11-18-49	8-28-41		
+25	107.47	101.55	5.92		+54									
					+70		#1030		2717 E. Kellogg		11-21-27			
+75	107.17	101.65	5.52		1+09.4				508 S. Volutsia		2-15-73			
1+25	107.23	101.75	5.48		2+25		#1319		2801 E. Kellogg		6-5-24			
+85	106.87	101.84	5.03	2+56	+37		#876		2803 E. Kellogg		5-14-27			
2+35	107.32	101.98	5.34		2+50		#293		2805 E. Kellogg		10-17-27			
0+0	107.22	101.91	5.31	0+0	0+28.5		#1849		2711 E. Kellogg		9-20-39			
					+54		#509		2710 E. Kellogg		4-15-42	7-7-65		
1+0	107.22	102.11	5.11		+79		#880				4-18-24			
+25	107.13	102.16	4.97	1+25.3	1+02		#627				4-1-24			
0+0	109.24	100.50	8.74	0+0	0+27.2	0+29.7	#176		555 S. Erie		3-10-30			
					+52	+54.5	#130		507 S. Erie		3-1-27			
					0+77.2	+79.7	#1004		2816 E. Orme		4-12-30			
1+0	108.34	100.80	7.54		1+01	1+03.5	#309		573 S. Erie		12-2-25			
					1+27.3	+29.8	#768		551 S. Erie		6-13-21			
					+53	+55.5	#223				9-11-25	4-5-29		
					+78	+80.5	#2287		546 S. Volutsia		7-13-25			
					2+03	2+05.5	#1109		547 S. Erie			3-22-29		
2+0	108.39	101.10	7.29		+28.4	+30.9	#550		540 S. Volutsia		10-10-24	8-26-29		
					+52.7	+55.2			545 S. Erie		12-16-27			
					+79.4	+81.9	#2539		536 S. Volutsia			5-14-29		
					3+03.7	3+06.2			535 S. Erie		11-14-24			
					+29	+31.5								
					+54	+56.5	#1198		517 S. Erie			8-15-68		
					+79	+81.5						11-3-25		
4+0	108.36	101.70	6.66		4+04	4+06.5	#342	#312	531 S. Erie		3-3-24	3-30-28		
					+28.5	+31	#1466		524 S. Volutsia		5-20-26			
					+53	+55.5	#423		578 S. Volutsia		10-14-29			
					+79	+81.5	#2145		2809 E. Kellogg (Rear)		3-10-49	9-26-78		
5+0	107.98	102.00	5.98		5+08.1	5+10.6	#519		2809 E. Kellogg		5-15-20			
5+14		102.04		5+14										
0+0	102.04			0+0	0+19		#276		2821 E. Kellogg		5-9-60			
1+0	102.34				+73	0+83	#149		2825 E. Kellogg		8-27-23			
+34.5	102.44			1+34.5	1+23		#2405		2827 E. Kellogg		8-2-23			

2002-01850 7/2102 537 S Volutsia - Overnight Svc - Citywide repair 12.6' S of MH 2+37.5 (2+24.9) 4" PUC 40, 2d IRCO, 1H22, 1V22, 1V45 4" Predco

94-14287-7 9-7-94 - 550 S Volutsia - Sample Plog - 4" sch 40 PUC tied back to wye

505 S Volutsia - 0+32 (Top) from T.V.
505 S Volutsia - 0+91 (Top) J.C. Stevens - 8-31-21 MH 0+00
C 65998 - 533 S Volutsia - 419 W. of Kellogg (0+51) East
C 11059 - 517 Erie - Jack Jones, Dennis 8-22-68 - tap (3+60.7)

#1308 - Tap - 12-7-25 - 552 S. Volutsia
#620 - 6-8-25 - 522 S. Estelle - Y taken approx. 50' S. of E. & W. Line
#582 - Tap - 5-20-29 - 531 S. Erie - J.M. Sterling
#186 - Tap - 5-9-49 - 2711 E. Kellogg - Eugene Reynolds (Conn. 0+06 W. of M.H. 0+0) S.O.C. 33854-2711 6" PUC - 7-25-72 - al Henning.
#5647 - Tap - 7-18-55 - 534 S. Volutsia - Jayhawk Plog.
#6064 - Tap - 11-4-55 - 552 S. Volutsia - Pray Bros.
#2058 - Tap - 8-20-56 - 2715 E. Kellogg - R.K. Ray
9/0 05/1284-2 Tap (255 E. Kellogg) - 5-26-60 (MH 1+24.5) (6-20-80 - Henning) (S/O 0+68.0)
C 36486 - B2815 - Tap (502-506 E. Estelle) - Lefson 2-4-65 (0+97.3) - al Henning - 12-27-72
C 36001 - 503 S Volutsia - temporary const. stake up (4+12.5) MH 4+63.5