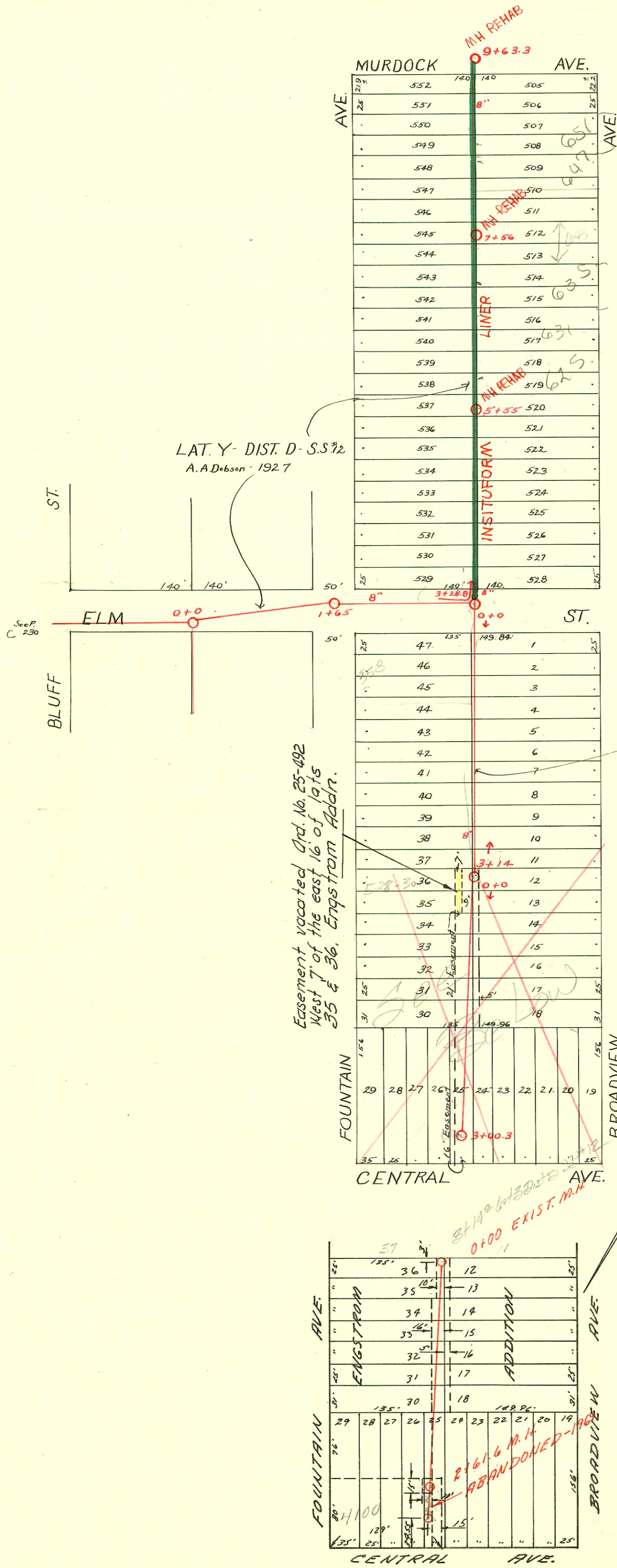


1992 SANITARY SEWER REHABILITATION PROGRAM - PHASE I
 PROD. NO. 468-82220 (631879)
 BUILT BY INSITUFORM PLAINS, INC.
 BOOKED 3-17-93 FROM AS BUILTS



RECONNECTIONS

STATION	ADDRESS	DIRECTION
9+45.3	655 Broadview	East
9+22.3	660 Fountain	West
8+94.2	648 Fountain	West
8+71	651 Broadview	East
8+46.1	647 Broadview	East
8+27.1	646 Fountain	West
8+01.7	645 Broadview	East
7+73.9	644 Fountain	West
7+25.8	643 Broadview	East
7+17.9	640 Fountain	West
7+01.7	635 Broadview	East
6+65	636 Fountain	West
6+63.9	631 Broadview	East
6+44.8	630 Fountain	West
5+86.9	625 Broadview	East
5+73.1	624 Fountain	West
5+24.1	616 Fountain	East
5+04.3	607, 609, 611, 613, 615, 617, 619, 621 Broadview	East
4+60.5	608 Fountain	West
4+42.1	604 Fountain	West
4+30.7	605 Broadview	East
3+95.4	601 Broadview	East
3+76.8	602 Fountain	West

CONSTRUCTION RECORD

SERVICE RECORD

Between Fountain & Broadview, Elm to Murdock

STATION	ELEVATION		Depth	MANHOLE	4-INCH "Y" BRANCHES		No. of Permit		House Number		DATE OF PERMITS	
	Ground	Grade			North West	South East	North West	South East	North West	South East	North West	South East
0+0	177.60	171.73	5.87	0+0								
1+0	180.70	172.13	8.57	1+65								
2+0	183.90	172.53	11.37	3+28.8	3+71.5		#635		602 N. Fountain		6-14-28	
					+96.5	3+94						
3+0	186.50	172.93	13.57		4+30.5	4+28	#816		606 N. Fountain		8-2-25	
3+28.8	188.04	173.04	15.0		+55.5	+53	#1202		608 N. Fountain		11-14-28	
4+0	187.31	173.29	14.02		+81	+78.5						
5+0	187.46	173.59	13.87		5+04.5	5+02	#516	#363	616 N. Fountain	639 N. Broadview	5-8-29	4-12-29
				5+55	+32.8	+30.3						
					+66.5	+64	#604		624 N. Fountain		6-7-28	
					+87.9	+85.4						
6+0	188.16	173.89	14.27		6+12	6+09.5						
					+37.9	+35.4	#46		630 N. Fountain		2-2-29	
					+63	6+60.5	#762	#769	632 N. Fountain	631 N. Broadview	7-29-30	7-17-28
					+88.7	6+86.2						
7+0	189.76	174.19	15.57		7+14.5	7+12	#785		640 N. Fountain		7-23-28	
				7+56	+41	7+38.5				643 N. Broadview		1-2-27 7-2-28
					+65	+62.5	#1240		644 N. Fountain		11-23-28	
					+90.5	+88				645 N. Broadview		9-16-29
8+0	187.71	174.49	13.22		8+18	8+15.5	#337		646 N. Fountain		9-20-29	
					+43	8+40.5				647 N. Broadview		9-16-29
					+65.7	+63.2	#1119	#1268	648 N. Fountain	645 N. Broadview	10-19-28	12-3-28
9+0	184.86	174.79	10.07		+92.8	+90.3						
9+63.3	182.76	174.98	7.78	9+63.3	9+17.5	9+15	#838	#1014	660 N. Fountain	655 N. Broadview	8-8-28	8-7-29

Between Fountain & Broadview, Elm St. South

0+0	186.14	172.59 Out 174.0 In	12.14	0+0	0+54.5	0+52			558 N. Fountain	555 N. Broadview	6-27-28	5-23-28
1+0	189.09	175.5	13.59		+78.5	+76	#688	#556				
					1+05	1+02.5			546 N. Fountain	551 N. Broadview	9-17-28	4-11-28
					+31.2	+28.7	#1005	#357				
					+55	+52.5						
2+0	189.84	177.0	12.84		+80.3	+77.8	#836	#62	544 N. Fountain	541 N. Broadview	7-8-29	1-25-28
					2+05	2+02.5						
					+31.5	+29						
3+0	191.65	178.5	13.15		+61.5	+59	#1046	#1145	536 N. Fountain	529 N. Broadview	9-25-28	12-28-27
					+92.5	+90						
3+14	191.94	178.71	13.23	3+14	3+11.5	3+09						

Lot 16, Dist. D, S.S. #12

0+0	192.6	182.80	9.8	0+0		0+22.4						
					0+41.6		#1743		528-30 N. Fountain		8-11-54	
					+44.6	0+47.6	#1740		522 N. Fountain		8-11-54	
					+50.6							
					+53.6							
						0+64.5	#5931			521 N. Broadview		8-5-55
						+86.5						
1+0	193.8	183.20	10.6		1+72.5		#1741		516 N. Fountain		8-11-54	
					1+75.5							
						1+84.5	#1625			4114 E. Central		7-25-56
2+0	194.6	183.60	11.0		2+04.5							
					+29.5		#2578		510-12 N. Fountain		11-15-54	
					+87.0							
					+93.0							
3+0	Aug 49	184.00	9.6	3+100-3	Abandoned Aug 69		#15515		4100 E. CENTRAL		8-21-69	

#13287 621 N. Broadview (Basement) 9-2-55

- #1460 - Tap - 613 N. Broadview - 10-11-29 - R.H. Anderson
- #1822 - Tap - 625 N. Broadview - 11-17-44
- #5930 - Tap - 521 N. Broadview - 8-5-55 - Justiss Plbg. Co.
- #5931 - Tap - 521 N. Broadview - 10-5-55 - Justiss Plbg. Co.
- 1119 Tap 645 N. Fountain 10-19-28 - Schellberg 77's of MH 94633