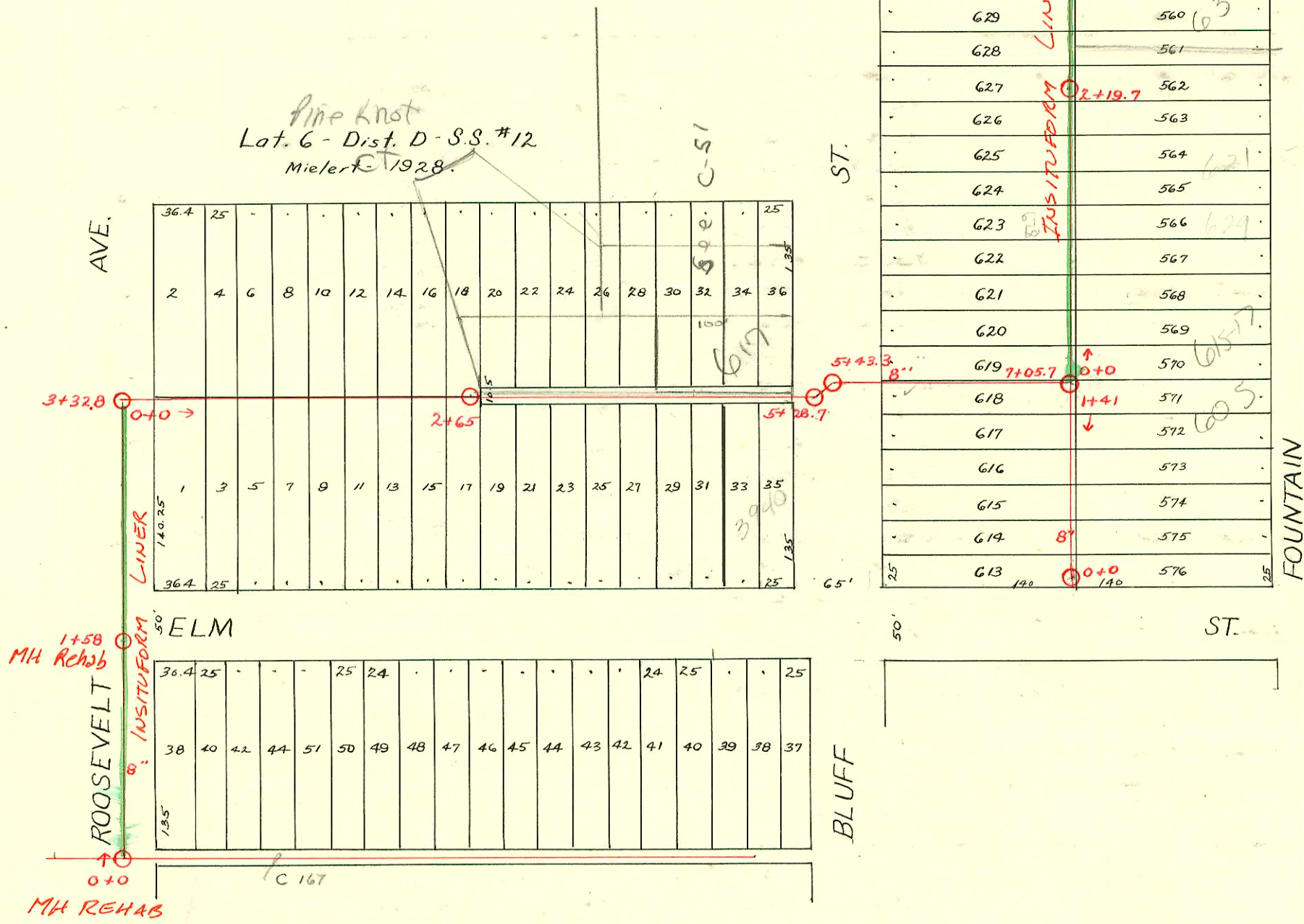


Sewer Easement - Aug. 30, 1928 - From Geo. H. Wickersham to City of Wichita, "The north 5' of lot 618, Bluff Ave, Overlook Addn." Recorded in Misc. Book Page 129, Reg. of Deeds. In Deed file - City Clerk.



MURDOCK AVE.			
636	140	4+38.2	553
635			554
634	8"		555
633			556
632			557
631			558
630			559
629			560
628			561
627		2+19.7	562
626			563
625			564
624			565
623			566
622			567
621			568
620			569
619	7+05.7	0+0	570
618		1+41	571
617			572
616			573
615			574
614	8"		575
613	140	0+0	576

1991 SAN. SEW. RECONSTRUCTION PROGRAM PHASE III Built by INSITUFORM PLAINS

1991 SAN. SEWER RECONST., PART I
 PROJ. NO. 468-82140 (630491)
 INSITUFORM PLAINS, INC.

SCALE 1" = 100'

CONSTRUCTION RECORD

SERVICE RECORD

Line in Roosevelt

STATION	ELEVATION		Depth	MANHOLE	4-INCH "Y" BRANCHES		No. of Permit		House Number		DATE OF PERMITS	
	Ground	Grade			North West	South East	North West	South East	North West	South East	North West	South East
0+0	161.86	156.50	5.36	0+0								
1+0	161.52	156.60	4.92	1+58		0+94						
2+0	161.27	156.70	4.57			2+64.5						
3+0	161.00	156.80	4.20									
3+32.8	161.49	156.83	4.66	3+32.8								

Line No. of Elm, from Roosevelt to bet. Bluff & Fountain.

0+0	161.49	156.83	4.66	0+0	0+29.8	0+27.3			3900 E. Elm		3-24-30
					+54.7	+52.2	#237				
					+80.8	+78.3					
1+0	165.56	157.73	7.83	1+06.5	1+04				3902 E. Elm		3-24-30
					+32.1	+29.6	#238				
					+58.1	+55.6					
					+83.2	+80.7					
2+0	168.03	158.63	9.40	2+09	2+06.5				3912 E. Elm		11-21-30
					+35.0	+32.5	#274		3914 E. Elm		3-29-30
					+61.2	+58.7	#275		3918 E. Elm		3-29-30
				2+65	+86.4	+83.9					
3+0	169.45	159.53	9.92	3+11.9	3+09.4				3922 E. Elm		3-29-30
					+37.7	+35.2	#276		3928 E. Elm		10-8-28
					+63.5	+61.0	#1084				
					+88.8	+86.3					
4+0	165.83	160.43	5.40	4+14.5	4+12.0				3932 E. Elm		11-22-28
					+40.5	+38	#1239		621 N. Bluff		11-4-80
					+66.4	+63.9	#475				11-6-36
					+92.5	+90					
5+0	170.76	161.33	9.43	5+28.7	5+26.2						
				5+43.3	5+40.8	5+93.8					
6+0	174.15	162.23	11.92								
7+0	175.80	163.13	12.67								
7+05.7	177.11	163.22	13.89	7+05.7							

Line bet. Bluff & Fountain, from Elm St. No. 140'

0+0	176.33	164.62	11.71	0+0	0+05.1	0+07.6			602 N. Bluff		8-23-29
					+24.5	+27.0	#1135		603 N. Fountain		1-10-39
					+49.8	+52.3			610 N. Bluff		7-18-29
					+75.9	+78.4	#892				
1+0	176.82	163.82	13.00	1+01.5	1+04				605 N. Fountain		8-28-30
					+27.2	+29.7	#827				
1+41	177.11	163.50	13.61	1+41							

Line bet. Bluff & Fountain, from Murdock St. to E & W. line

0+0	177.11	163.22	13.89	0+0	0+16.5	0+14			621 N. Fountain		1-5-82
					+42.5	+40	#574		629 N. Fountain		5-18-29
					+68.3	0+65.8			629 N. Fountain		1-9-47
1+0	179.38	164.12	15.26	1+20.7	1+18.2						
					+46.4	+43.9	#1233				
					+72.4	+69.9	#1520		632 N. Bluff		9-19-80
2+0	179.77	165.02	14.75	2+19.7	2+17.2				639 N. Fountain		9-25-29
					+98.8	+96.3	#1293		639 N. Fountain		11-15-48
					+27.5	+25.0	#1362				
					+51.5	+49	#1197		639 N. Fountain		11-27-28
					+78.0	+75.5			644 N. Bluff		1-12-04
3+0	180.19	165.92	14.27	3+10.5	3+08				645-47 N. Fountain		11-13-28
					+28.5	+26	#1804				
					+54.5	+52	#1496				
					+79.2	+77.7	#3512		746 N. Bluff		3-18-48
4+0	179.17	166.82	12.35	4+06.0	4+03.5				657 N. Fountain		9-2-49
					+34.0	+31.5	#2881				
4+38.2	179.64	167.18	12.46	4+38.2							

2004-00097 11204 639 Fountain - Roto Rooter - Pipe burst replacement - 4" PESDRIT - City wye repair 31' N of MH 2+19.7 (2+50.7) 2 Fernco, 4" Preco by city, 2022

- #01689 3946 E. Elm 11-4-30 (Sinks) MH. 5+28.7
- #862-628 N. Roosevelt - 7-13-29 - C.A. Baker - Tap
- #1221-601 N. Fountain - 11-19-28 - Tap
- #1339-3936 E. Elm - 12-24-28 - Tap
- #612-616 N. Bluff - 5-27-29 - Tap - F.K. Hoff & Son
- #277-3910 E. Elm - 3-29-30 - Tap - Johnson Pibg.
- #353-636 N. Bluff - 7-8-47 - Tap at 2+13.5 - Baker Pibg. Co.
- #3081-626-28 N. Bluff - 1-5-55 - Tap - La Foy