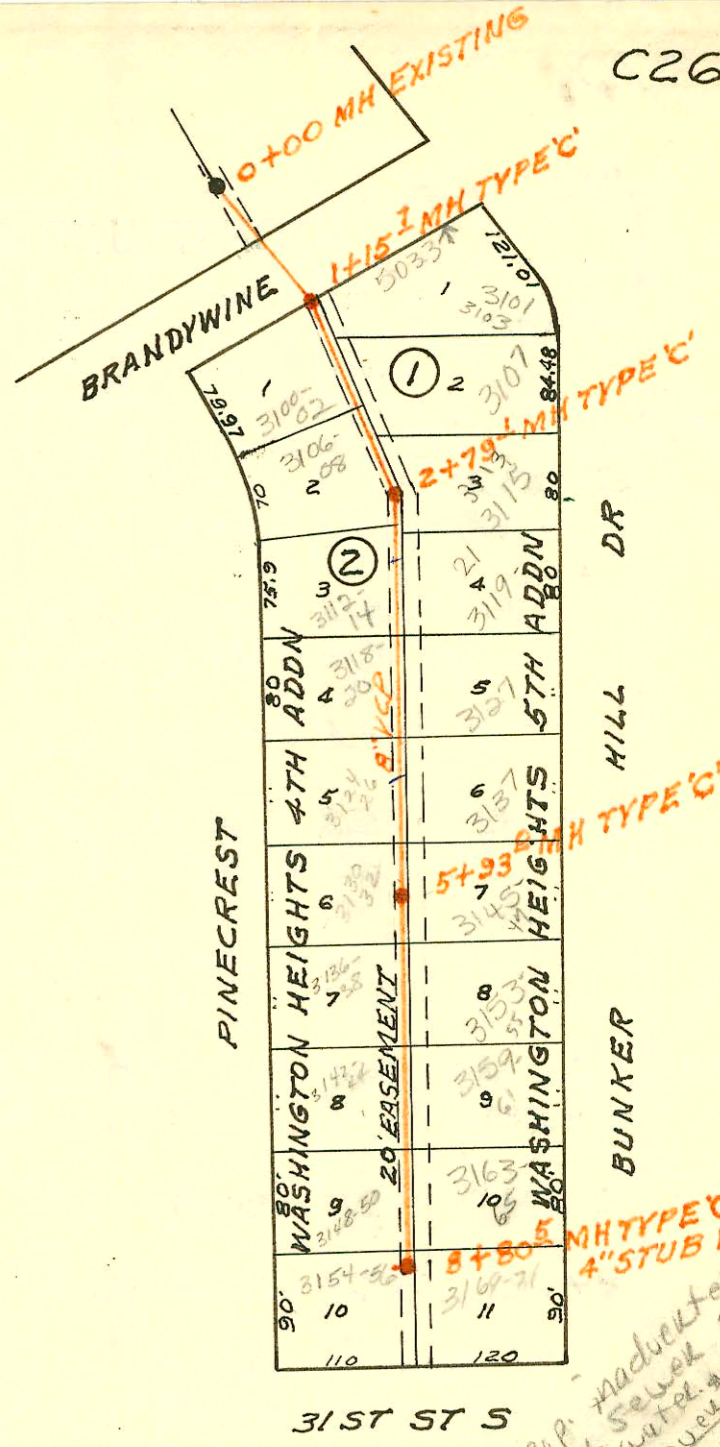
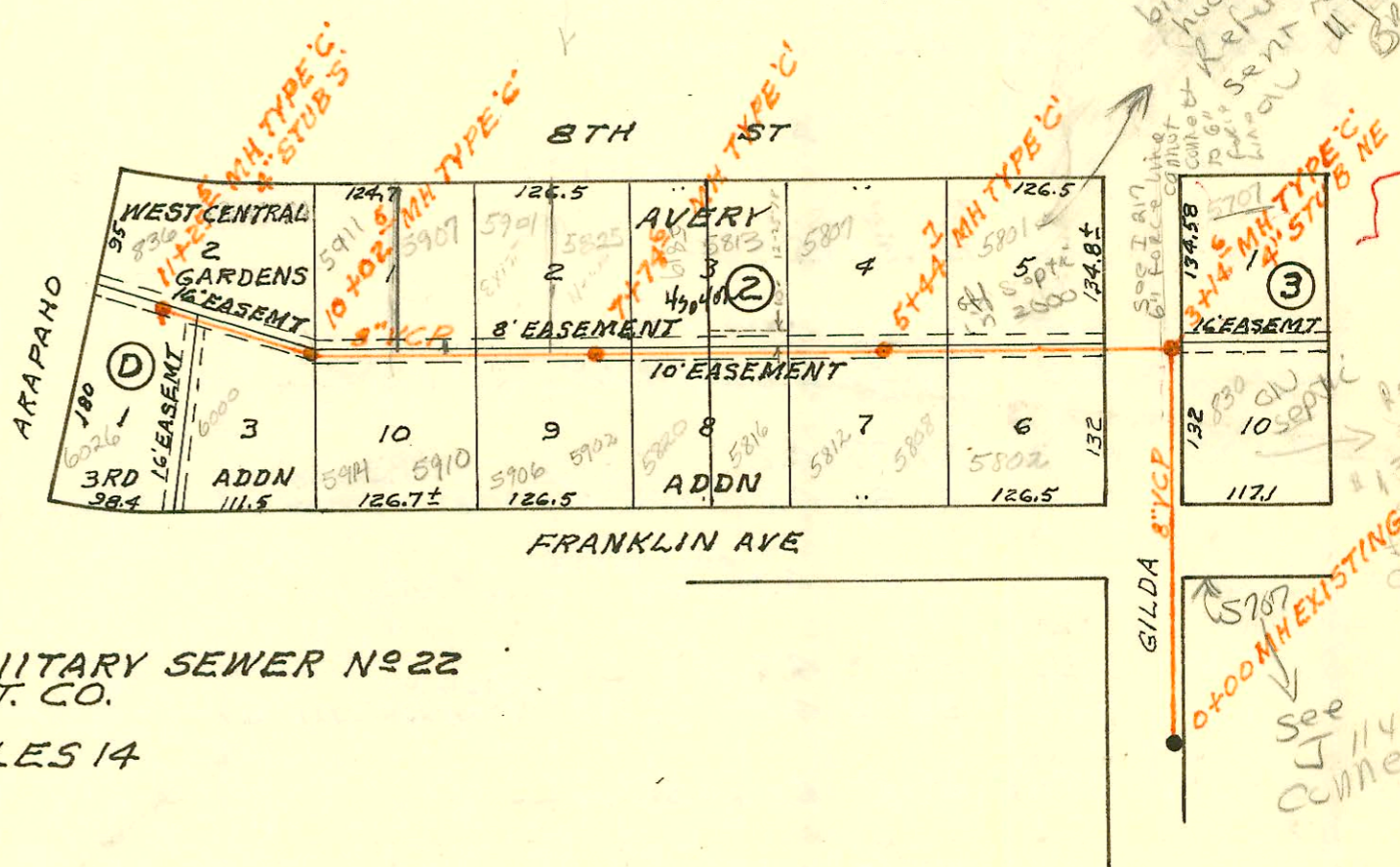


LATERAL 10 MAIN 10 WAR INDUSTRIES SEWER  
BUILT BY: ARKANSAS CONST. INC.  
PROJ. N<sup>o</sup> DBKL 571025  
BOOKED 1-16-78 FROM SRL 13

BY MAP



SCALE 1"=150'



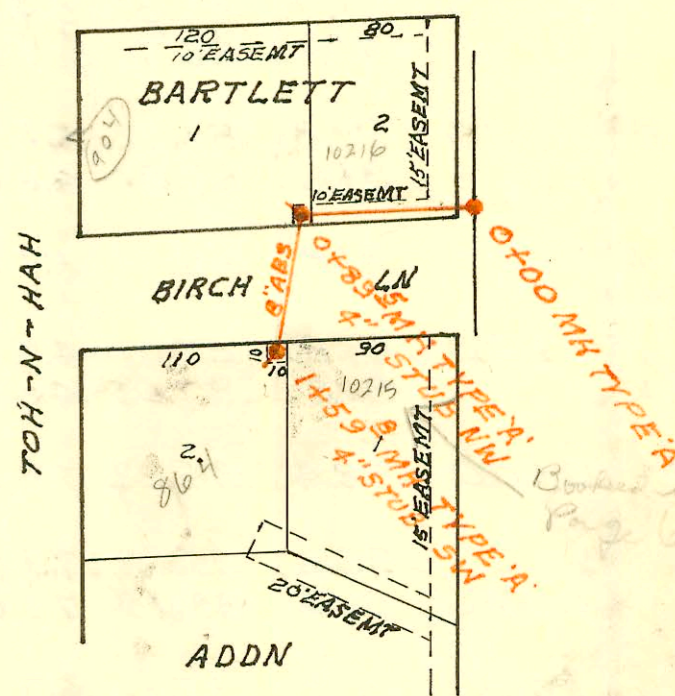
SCALE 1"=150'

LATERAL 226 MAIN 5 SANITARY SEWER N<sup>o</sup> 22  
BUILT BY: ARKANSAS CONST. CO.  
PROJ. N<sup>o</sup> DBKL 577023  
BOOKED 1-17-78 FROM LES 14

BY MAP

SAN SEWER EXTENSION TO BARTLETT ADDN  
BUILT BY: MID STATES CONST. CO.  
PROJ. N<sup>o</sup> DBKW 707025  
BOOKED 1-18-78 FROM LES 10

BY MAP



SCALE 1"=100'

July 71  
Lot Spot  
10810  
172  
10  
20  
20

This prop. had been  
hooked for sewer when  
hooked to water. 1051 92  
Refund of prop. owner  
sent to prop. owner  
11/19/99  
DR

Refund  
of  
1331 Col  
collected  
in equal  
shares  
1968

See  
J 114 for  
connection

CONSTRUCTION RECORD

SERVICE RECORD

STATION	ELEVATION		Depth	MANHOLE	4-INCH "Y" BRANCHES		No. of Permit		House Number		DATE OF PERMITS	
	Ground	Grade			North West	South East	North West	South East	North West	South East	North West	South East
<b>LATERAL 10 MAIN 10 WAR INDUSTRIES SEWER</b>												
0+00	147.1	139.80	7.3	EXISTING								
1+00	148.6 148.9	140.20 140.37	8.4 8.5	1+15.7	1+42.1 tap	1+40.5 tap	#125 #127	#127	3100-02 S. Pinecrest	3101-03 Bunker Hill	4-21-80	4-21-80
2+00	150.4 151.4	141.29 142.29	9.1 9.2	2+79.1	2+57.3 tap	2+01.1 tap	#126 #129	#128	3106-08 S. Pinecrest	3107-09 Bunker Hill	4-21-80	4-21-80
3+00	151.7	142.73	9.0		3+46.1 tap		C68909		3112-14 S. Pinecrest	3113-15 Bunker Hill	11-13-78	
4+00	153.6	144.94	8.7		4+23.0 tap	4+42.0 tap	C68910	530	3118-20 Pinecrest	3119-21 Bunker Hill	11-8-78	6-10-80
5+00	155.5 158.1	147.16 149.23	8.3 8.9	5+93.0	5+03.0 tap	5+20.0 tap	C68907 C68908	532 770	3134-26 S. Pinecrest	3137-39 Bunker Hill	10-13-78	6-10-80
6+00	158.3	149.37	8.9		6+69.7 tap	6+68.0 tap	C67604		3130-32 S. Pinecrest	3145-47 Bunker Hill	11-8-78	7-16-80
7+00	159.7	151.58	8.1		7+50 tap	7+48.9 tap	C67605	00771	3142-44 Pinecrest	3153-55 Bunker Hill	8-3-78	7-16-80
8+00	162.5 164.2	153.79 155.66	8.7 8.5	8+80.5 4" STUB W	8+20.5 tap	8+31.5 tap	C67606	00773	3148-50 S. Pinecrest	3163-65 Bunker Hill	8-2-78	7-16-80
<b>LATERAL 226 MAIN 5 SANITARY SEWER No 22</b>												
0+00	124.0	113.97	10.0	EXISTING								
1+00	123.5	114.27	9.2									
2+00	123.0	114.57	8.4									
3+00	122.3 124.3	114.87 115.01	7.4 9.3	3+14.6 4" STUB NE				2052 0132		830 Gilda		4-19-02
4+00	123.0	115.27	7.7		CITY TAP 4" SCH 40 4+35.1	4+33.2	2052 0094	0559	5801 w 8th	Below 5802 Franklin	4-13-00	2-4-81
5+00	124.4 124.8	115.57 115.70	8.8 9.1	5+44.7	5+66.7 tap	5+59.9 tap	C64520	C64571	5807 W. 8th	5808 Franklin	5-3-78	3-13-78
6+00	124.7	115.87	8.8		6+58.7 tap	6+51.6 tap	2896	C64572	5813 W. 8th	5814 Franklin		12-22-77
7+00	124.5 125.2	116.17 116.40	8.3 8.8	7+74.6	7+06.6 tap	7+26.9 tap	16265	C65533	5817 W. 8th	5820 Franklin	3-20-81	12-11-77
8+00	125.5	116.47	9.0		7+60.1 tap	7+64.8 tap	91-35705	2066251	5825 W. 8th	5827 Franklin	5-14-86	3-27-78
9+00	125.0	116.77	8.2		7+18.6 tap	8+41.1 tap	91-25335	7	5901 w 8th	5902 Franklin	10-18-91	5-5-78
10+00	124.6 124.6	117.07 117.18	7.5 7.4	10+02.5	9+14.6 tap	9+28.0 tap	14338		5907 w. 8th	5910 Franklin	6-25-91	8-15-78
11+00	124.4 124.0	117.47 117.55	6.9 6.5	11+25.5	4" SDR 35 9+81.5 tap	9+75.6 tap	91-38634	207860	5911 W. 8th	5914 Franklin	7-26-85	8-15-78
<b>SANITARY SEWER EXTENSION TO BARTLETT ADDN</b>												
0+00	168.4	157.96	10.4	0+00								
	168.6	158.31	10.3	0+89.5 4" STUB NW	0+36 tap		C71567		10216 W. Birch		5-2-79	
1+00	168.6 168.0	158.46 158.69	10.1 9.3	1+59.8			C71568		90 W. Tch-N-Hall		5-2-79	
							C71569			864 Tch-N-Hall		
							C71566			10215 W. Birch		5-2-79

NC 2000-00904-5801 W 8th ST - BANGLE - CITY TAP - OFF SEPTIC - SEPTIC TANK NEEDED PUMPED AGAIN & CAVED IN TIED TO OLD CAST IRON CO - 120.5' W OF MH 3+14.6 (4+35.1)