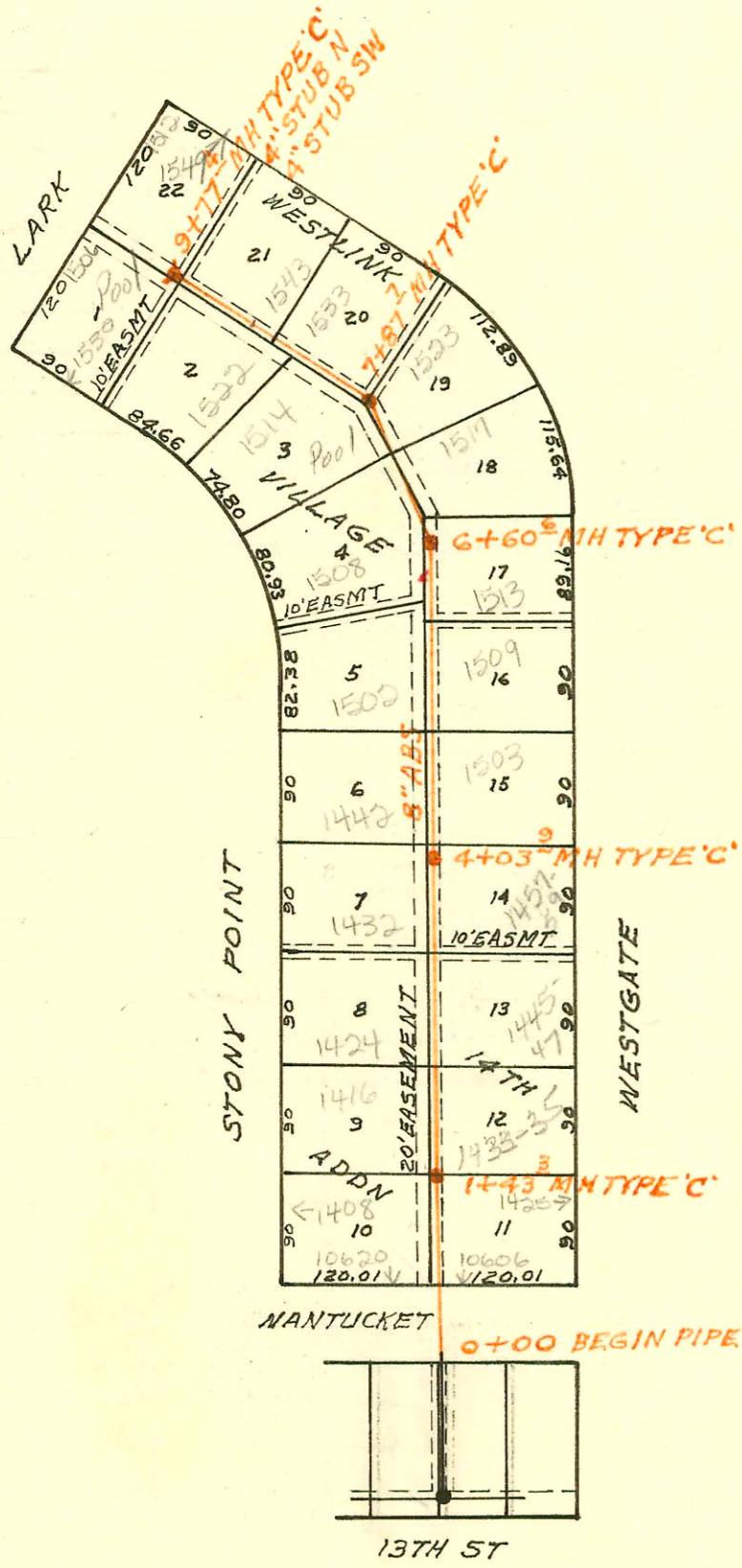
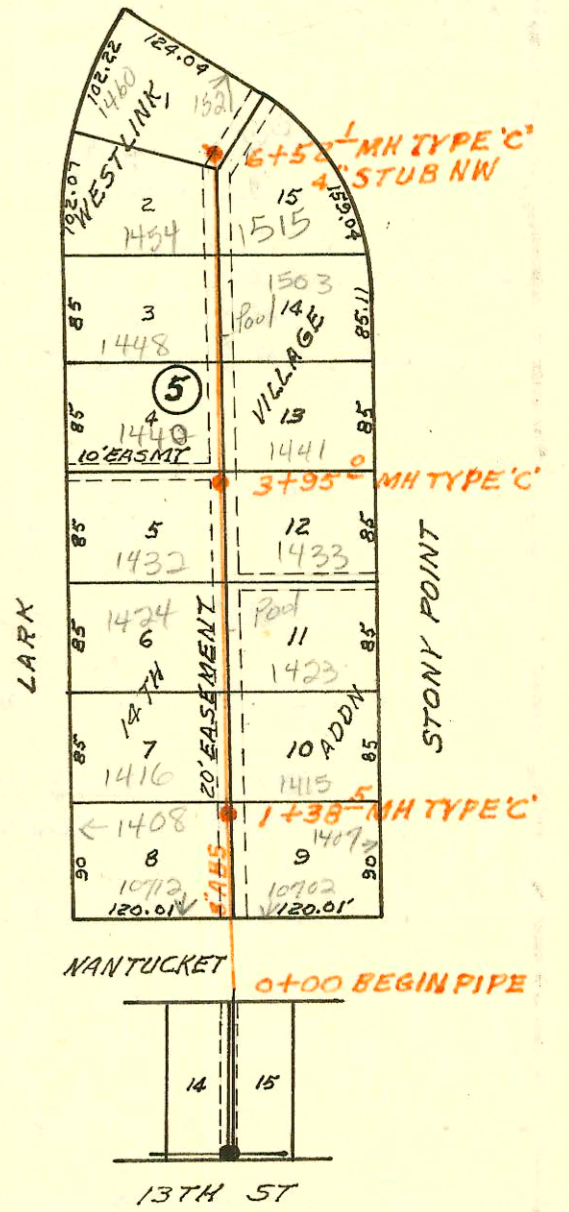


LATERAL 103 SOUTHWEST INTERCEPTOR
 BUILT BY: MID STATES CONST. CO.
 PROJ. N^o DBKL 577040
 BOOKED 3-20-78 FROM LES IF

on map
 clear

SCALE 1"=150'



SCALE 1"=150'

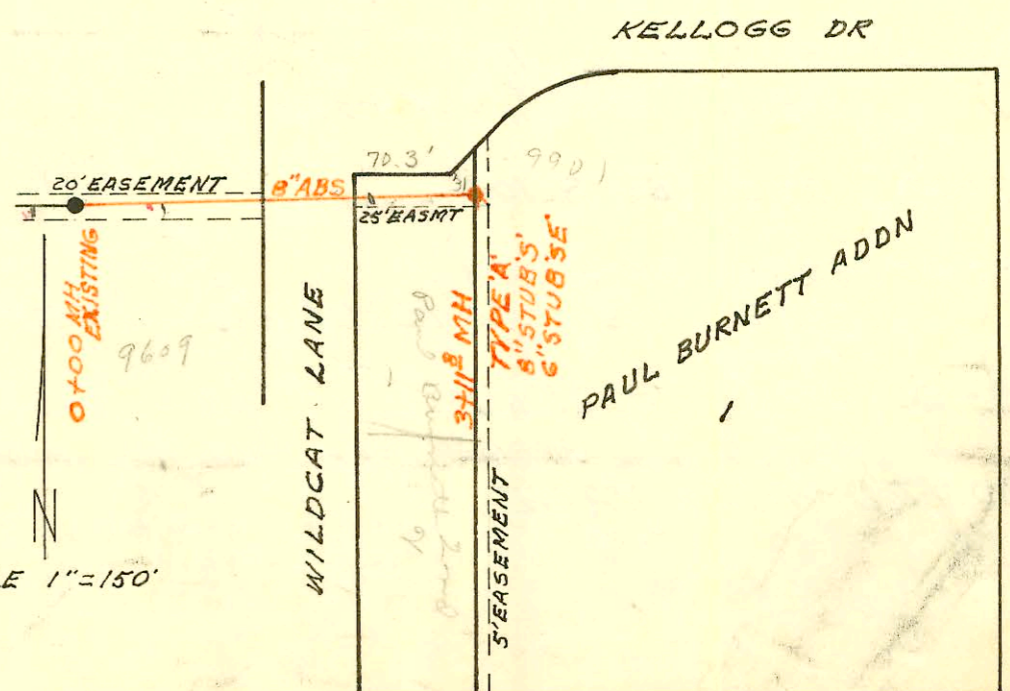
LATERAL 104 SOUTHWEST INTERCEPTOR
 BUILT BY: MID STATES CONST. CO.
 PROJ. N^o DBKL 577041
 BOOKED 3-21-78 FROM LES IF

on map
 clear

LOT 1 PAUL BURNETT ADDN SAN SEWER
 BUILT BY: UTILITY CONTR. INC.
 PROJ. N^o DBKW 70709
 BOOKED 4-11-78 FROM SRL 9

on map
 clear

SCALE 1"=150'



CONSTRUCTION RECORD

SERVICE RECORD

STATION	ELEVATION		Depth	MANHOLE	4-INCH "Y" BRANCHES		No. of Permit		House Number		DATE OF PERMITS	
	Ground	Grade			North West	South East	North West	South East	North West	South East	North West	South East
LATERAL 103 SOUTHWEST INTERCEPTOR												
0+00	158.0	143.32	14.7									
1+00	158.6	144.12	14.5		Tap 1+16.5		C71575		1408 Lark		5-2-79	
	159.0	144.42	14.6	1+38.5		1+29.7	C73220		1407 Stony Point		7-26-79	
					Tap 1+86.1	2+77.4	C71576	C70563	1416 Lark Stony Point		5-2-79	3-9-79
2+00	159.6	144.92	14.7		2+53.4		C71577		1424 Lark		5-2-79	
						2+86.0 Tap		4973	1423 Stony Point		8-10-80	
3+00	159.8	145.72	14.1		3+49.7	3+46.9	C71578	#130	1432 Lark Stony Point		5-2-79	4-21-80
	160.7	146.48	14.2	3+95.0								
4+00	160.8	146.52	14.3			4+23.2	C74369		1441 Stony Pt.			9-18-79
					4+37.2		C74551		1440 Lark		9-28-79	
5+00	161.1	147.32	13.8			5+12.4	C71367		1502 Stony Point			4-23-79
					5+12.7	5+77.7	C71571	C75496	1448 Lark	1515 Stony Point	11-2-79	11-28-79
6+00	160.7	148.12	12.6		6+04.1		80631		1454 Lark		6-27-80	
	160.2	148.52	11.7	6+52.1	4" STUB NW		2867		1460 Lark		3-18-81	
LATERAL 104 SOUTHWEST INTERCEPTOR												
0+00	158.6	143.64	15.0									
1+00	159.7	144.04	15.7		Tap 1+18.8	2+122.2	C74117	C75475	1408 Stony Pt.	10604 Westgate	9-6-79	11-27-79
	160.0	144.21	15.8	1+43.3		1+82.8	C74796		1416 Stony Point	1433 Westgate		10-11-79
							C71869				5-21-79	
2+00	160.2	144.56	15.6			2+18.9	C74797		1435 Westgate			10-11-79
						2+58.9	C74098		1447 Westgate			9-5-79
3+00	159.7	145.16	14.5		2+71.9	2+90.9	#123	C74097	1424 Stony Point	1435 Westgate	4-21-80	9-5-79
					3+63.9	3+41.2	C75826	C73858	1432 Stony Point	1437 Westgate	12-20-79	8-23-79
4+00	159.5	145.76	13.7			3+96.5	C713859		1459 Westgate			8-23-79
	159.5	145.78	13.7	4+03.9	Tap 4+47.7	4+53.5	C71186	9420	1442 Stony Point	1503 Westgate	4-11-79	10-12-80
5+00	159.3	146.36	12.9			5+1.6	C70355		1509 Westgate			2-22-79
					5+28.1		C72332		1502 Stony Point			6-13-79
6+00	159.4	146.96	12.4		Tap 6+34		02331		1508 Stony Point			6-13-79
	159.5	147.33	12.2	6+60.6		6+54.6	C71526		1513 Westgate			5-1-79
	159.5	147.43	12.1									
7+00	159.3	147.66	11.6			7+04.1	C71527		1517 Westgate			5-1-79
	159.6	148.17	11.4	7+87.7		7+58.7	C73125		1523 Westgate			10-31-79
	159.6	148.27	11.3									
8+00	159.6	148.36	11.2		8+06.7	8+07.7	C72847	8343	1514 Stony Point	1533 Westgate	7-10-79	6-13-83
							99195-7		1522 Stony Point	1543 Westgate	1-6-79	
9+00	159.5	148.96	10.5		9+03.6	9+02.3	C73127	8212	1526 Stony Point	1512 Westgate	8-6-79	5-13-81
	159.0	149.42	9.6	9+77.4	4" STUB N	4" STUB SW	74639	#277	1506 Lark	1512 Lark	10-4-79	5-12-80
LOT 1 PAUL BURNETT ADDN SAN SEWER												
0+00	184.8	175.65	9.2	EXISTING								
1+00	185.1	176.05	9.1			2+48.5 wrong	C67198					7-5-78
						2+77.8 wrong	C67199					7-5-78
2+00	184.7	176.45	8.3			2+27.5	C65805					4-10-78
3+00	184.2	176.85	7.4									
	184.2	176.89	7.3	3+11.8								
						8" STUB S						
						6" STUB SE						

Refer to L109 these are conn-booked incorrectly to this book 10/30/91 BK