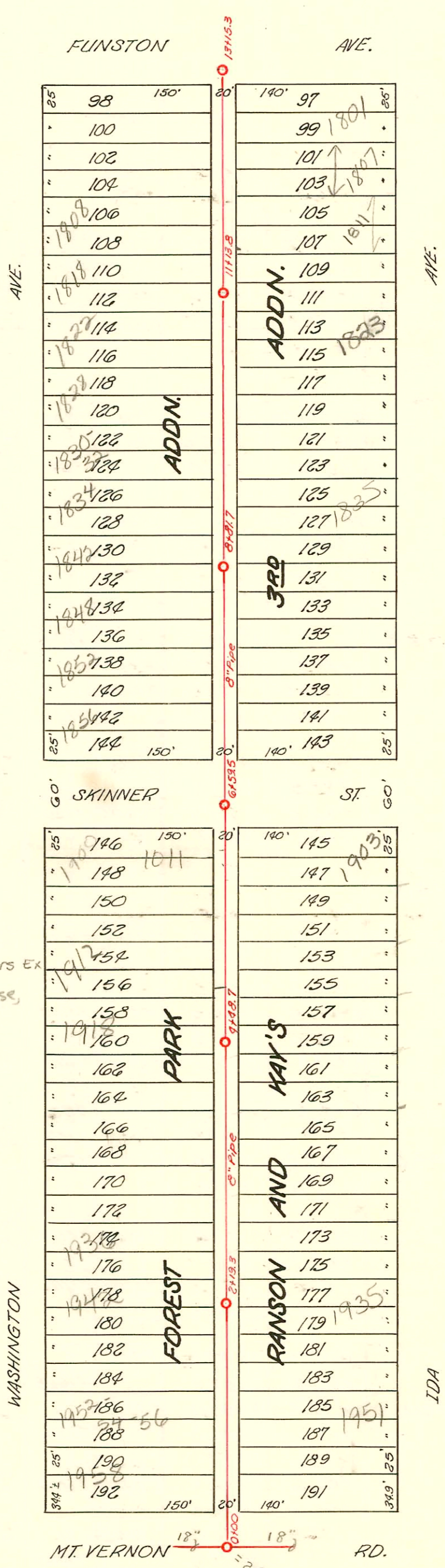


S.S. No. 20 1919
LAT. P - DIST. C



2002-03218 11/26/02 1912 S Washington - lumber Ex
4"40 PVC, 4" WYE repaired 43' N of MH 4+48.7
(4+91.7) Repl entire line, 1V45, twin co @ house,
twin co 100' out - dirt alley cut

2001-00642 3/22/01 1903 S Ida - Bucks
Backhoe - 4" sch 40 69.6' S of MH 6+57.5 (St 87.5)
New trap, 2-twin co, 2-kickouts, 3-ferns to clay
4"40 PVC to just East of driveway, ferns to clay
West of driveway, 1-4" WYE, ferns to clay 1' from
main

24+48.8
BX B 125

CONSTRUCTION RECORD							SERVICE RECORD					
STATION	ELEVATION		Depth	MANHOLE	4-INCH "Y" BRANCHES		No. of Permit		House Number		DATE OF PERMITS	
	Ground	Grade			North West	South East	North West	South East	North West	South East	North West	South East
13	101.39	94.65	6.64	13+15.3								
					12+84.4	+81.9						
					12+64.0	+56.5	#138	#2801	1800 S. Wash. Ida	1801 Ida	11-28-34	3-12-46
					+34.0	+31.5	#36		1800 S. Wash. Ida		Presby. Ch. 9-5-41	
12	101.54	94.50	7.04		12+08.5	+06.0		#1894		1807 R Ida		8-19-24
					11+83.3	+80.8	#3954		1814 S. Wash. Ida			8-4-41
					11+58.1	+55.6	#1474	#634	1811 S. Wash. Ida	1811 Ida	4-13-64	5-29-29
				11+13.8	11+32.6	+30.1		#1713	1817 S. Wash. Ida	1817 Ida		7-24-24
11	102.11	94.35	7.76		11+05.3	+03.8	#2912		1818 S. Wash. Ida			12-2-40
					10+80.3	+77.8						
					10+54.6	+52.1		#1174	2003-0146	1823 R Ida		6-9-03
					10+29.8	+27.3		#2054		1827 Ida		10-24-25
10	101.43	94.20	7.23		10+02.7	+01.2	#820		1822 S. Wash. Ida			9-9-24
					9+77.3	+74.8	#3688	#1763	1826 S. Wash. Ida	1831 Ida	6-16-41	8-1-24
					9+51.3	+48.8	#1787		1830 S. Wash. Ida			3-17-48
					9+25.5	+23.0						
9	101.84	94.05	7.79		8+81.7							
					8+99.7	+97.2	#1567	#1599	1834 S. Wash. Ida	1835 Ida	5-16-39	7-10-24
					8+73.2	+71.7	#531	#504	1845 Ida		4-13-28	5-15-30
					8+48.8	+46.3						
8	102.02	93.90	8.12		8+23.3	+20.8		#390		1845 Ida		4-18-29
					7+97.1	+94.6	#783		1852 S. Wash. Ida			7-6-49
					7+72.5	+70.0	#262		1842 S. Wash. Ida			3-26-30
					7+46.9	+44.4		#340			4-28-26	1025 Skinner
7	101.83	93.75	8.08		7+25.8	+23.3	#1051		1844 S. Wash. Ida			9-26-28
					6+95.7	+93.2						
6	101.35	93.60	7.75	6+59.5	6+18.5	+16.0	#2956		1011 E. A Skinner		1-2-47	12-13-40
					5+87.5	+85.0						
					5+63.2	+60.7	#303	#742	1900 S. Wash. Ida	1902 R Ida	4-17-26	4-8-24
					5+67.9	+65.4	#1128		1906 S. Wash. Ida		11-13-28	
					5+43.5	+41.0		#745		1905 Ida		4-8-24
					5+17.0	+14.5						
5	101.64	93.45	8.19		4+92.4	+89.9	#74	#744	1912 Washington Ida	1909 Ida	11-26-2	2-2-26
				4+48.7	4+65.3	+63.8		2414		1911 Ida	1920 Wash. Ida	4-8-24
					4+39.5	+37.0	#32		1918 S. Wash. Ida		5-15-47	10-27-24
					4+15.2	+12.7		#743		1917 Ida		4-8-24
4	101.32	93.30	8.02		3+89.9	+87.4	436		1922 S. Wash. Ida			6-23-23
					3+64.8	+62.3	#116	#762	1926 S. Wash. Ida	1919 Ida	2-18-26	4-9-24
					3+38.4	+35.9						
3	101.06	93.15	7.91		3+12.9	+10.4		#761		1923 Ida		4-9-24
					2+42.4	+39.9	#500		1936 S. Wash. Ida		5-7-29	
					2+87.3	+84.8		#760		1927 B Ida		4-9-24
				2+19.3	2+61.8	+59.3		#507	1936 S. Wash. Ida		10-20-31	
2	100.75	93.00	7.75		2+13.0	+10.4	#1503	#759	1924 S. Wash. Ida	1931 Ida	9-6-49	4-9-24
					1+86.3	+83.8						
					1+60.6	+58.1	#4	15315	2372	1937 Ida	1937 Ida	1-2-30
					1+35.5	+33.0						1948 S. Wash.
1	100.75	92.85	7.90		1+07.0	+04.5	#125	#358	1952 S. Wash. Ida	1939 Ida	6-2-47	7-17-37
					+81.5	+79.0						
					+55.1	+52.6		#699		1957 Ida		6-30-28
0400	100.38	92.69	7.69	0+00	+29.0	+26.5	#261	#812	1957 S. Wash. Ida		3-23-25	8-1-28
												16-20-E. Levy

Tap #413 - 1845 Ida 4-22-29 O.W. Stinnett
 Tap #1789 1958 S. Washington 9-23-49 Pray Bros.
 Tap #6475 1926 Ida 9-17-53 Joe M. Donald

R. 664230 1932 S. Washington 11-29-77 J. Hamming (27853)