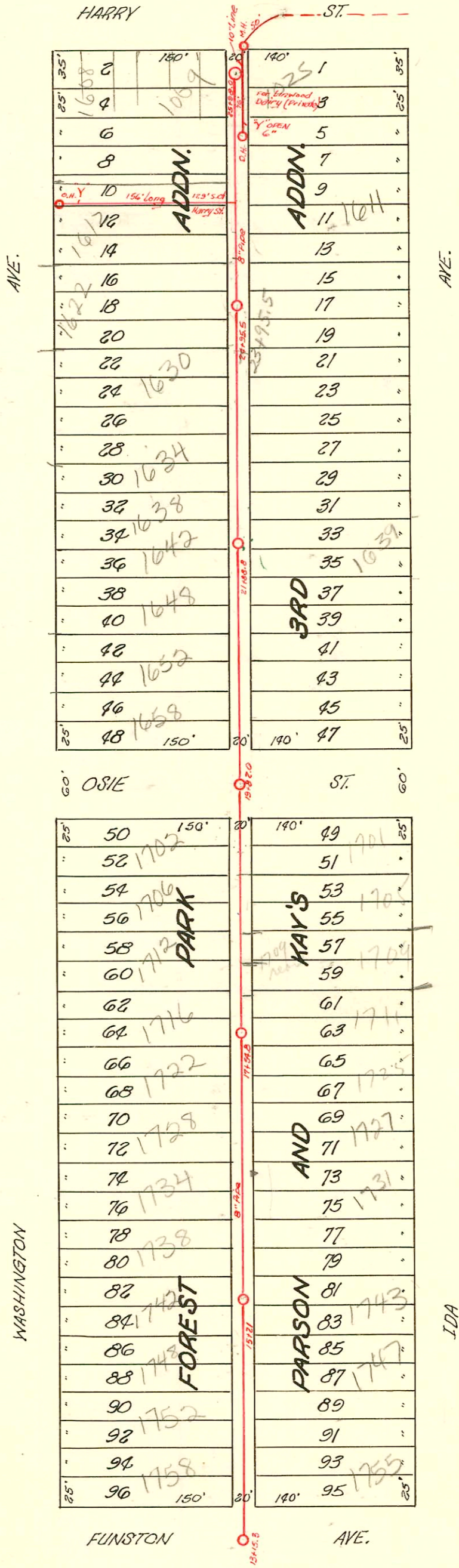


S.S. No. 20 1919
LAT. P - DIST. C



#92-15927 2-3-92 1009 E. Harry - Mc Carthy - (Replaced 10 ft of service line from main toward Bld with 4" PVC 40 pipe)

CONSTRUCTION RECORD						SERVICE RECORD							
STATION	ELEVATION		Depth	MANHOLE	4-INCH "Y" BRANCHES		No. of Permit		House Number		DATE OF PERMITS		
	Ground	Grade			North West	South East	North West	South East	North West	South East	North West	South East	
				25 +98.0									
					+89.2	+86.7	#382		5-14-27		1011 E. Harry		
					+63.5	+61.0		#859		1601 Ida		10-11-27	
					+37.3	+34.8	#1408	#1074		1007 E. Harry	1021 E. Harry	9-24-23	12-17-30
				25 +14.3	+11.8		53			1009 E. Harry		2-11-25	
25	101.66	96.45	5.21										
				24 +83.2	+80.7		#1775			1611 Ida		12-29-22	3-9-28
					+57.8	+55.3		#1473		1617 Ida		11-3-22	
					+32.3	+29.8	2394			1620 S. Wash.		10-23-24	
				24 +06.3	+03.8		#530			1622 S. Wash.	1621 Ida	6-12-70	5-19-22
24	102.01	96.30	5.71										
				23 +95.5									
				23 +80.5	+78.0		#191	#806		1612 S. Wash.	1619	6-1-46	7-10-22
				23 +55.2	+52.7		#2926			1630 S. Wash.		12-4-40	
				23 +29.1	+26.6			#64		1639 Ida		2-1-26	
23	102.20	96.15	6.05										
				23 +78.5	+76.0		#2925			1634 S. Wash.		12-4-40	
				23 +53.5	+51.0		#2924			1638 S. Wash.		12-4-40	
				23 +01.6	+25.0								
22	101.90	96.00	5.90										
				22 +88.8	+99.1		#2777			1639 S. Ida		8-27-23	
				22 +75.2	+72.7		#2923			1642 S. Wash.		12-40-40	
				22 +49.5	+47.0		#2701			1648 S. Wash.		9-26-40	
				22 +23.5	+21.0			2139		1647 Ida		9-18-24	
21	102.16	95.85	6.31										
				21 +98.2	+95.7		#2706			1652 S. Wash.		9-26-46	
				21 +73.5	+71.0		#2605	#130		1658 S. Wash.	1657 Ida	8-26-40	2-6-24
				21 +46.2	+43.7								
				21 +21.2	+18.7								
20	101.58	95.70	5.88										
				19 +82.0									
				19 +45.5	+43.0		#2388	#1043		1702 S. Wash.	1701 Ida	6-5-40	11-1-47
19	101.93	95.55	6.38										
				19 +95.0	+92.5		#477	#1768		1706 S. Wash.		11-9-36	12-13-22
				19 +68.5	+66.0		#2932	#1112		1712 S. Wash.	1709 Ida	12-5-40	10-7-25
				19 +43.0	+40.5								
18	101.71	95.40	6.31										
				18 +91.5	+89.0		#517	#1171		1716 S. Wash.	1723 Ida	11-27-36	11-5-28
				18 +65.5	+63.0		#734			1725		6-26-22	
				18 +40.0	+37.5								
				18 +15.5	+13.0								
17	101.78	95.25	6.53										
				17 +89.5	+87.0		#2460	#208		1722 S. Wash.	1727 Ida	6-28-40	6-11-47
				17 +63.5	+61.0		#3292	#1710		1738 S. Wash.	1731 Ida	4-9-41	7-24-24
				17 +37.1	+34.6								
				17 +10.5	+08.0								
16	101.73	95.10	6.63										
				16 +85.5	+83.0		#3291			1734 S. Wash.		4-9-41	
				16 +60.4	+57.9		#1668			1737 Ida		11-13-23	
				16 +32.5	+30.0		#3309			1742 S. Wash.		4-14-41	
				16 +07.5	+05.0		#2300			1743 Ida		5-8-40	
15	101.30	94.95	6.35										
				15 +82.5	+80.0		#3334	#1004		1748 S. Wash.		11-20-26	6-1-90
				15 +56.9	+54.4		#3342	21		1752 S. Wash.	1739 Ida	4-18-41	1-30-25
				15 +32.5	+30.0		#1769			1753 Ida		7-26-50	
				15 +07.3	+04.8								
14	101.40	94.80	6.60										
				14 +81.2	+78.7		#380			1759 Ida		3-4-24	
				14 +15.3	+55.8	+53.3	#3341	#535		1756 S. Wash.	1759 Ida	4-18-44	6-28-20
13	101.39	94.65	6.64										

Tap #2931 1728 S. Washington 12-5-40 Cherry Pkg. Co.
 Tap into Private Line at First M.H. S. of Harry 7-27-45 J.E. Landsome
 1005 E. Harry connected to Private Line, Permit #114 5-10-23 (Hanning)
 B 4212 S.O., 1622 S. Washington - (24+00) 9/28/65 KM Juley
 #1924 1-31-92 1025 E. Harry - McCullough - 4" PK sch 40 to exist wye com.