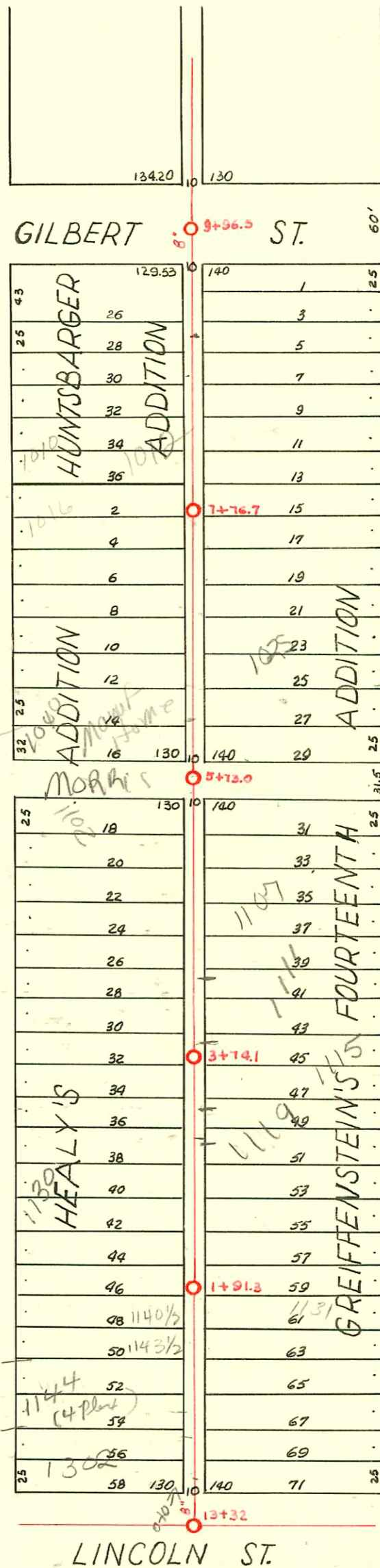


DIST. G - S.S. NO. 20
1919

*Manuf. Howe
Trap Reg'd*



- 2002-01251- 5/2/02- 1025 Lulu - Padgett Exc - 4" Sch 40 4" Prodeo 103' N of MH 5+73 (6+06) 172 IN CO, 1V45
- 2003-00025- 1/3/03- 1119 Lulu - McClung - city main repair 40' S of MH 3+74.1 (3+34.1) 1V45 tied to Claytile
- 2002-01842- 7/1/02- 1130 S Pattie - Rons Plog - city repair - wye 53' N of MH 1+91.3 (2+44.3) cmf repaired main + reconnected bldg swr line

CONSTRUCTION RECORD							SERVICE RECORD					
STATION	ELEVATION		Depth	MANHOLE	4-INCH "Y" BRANCHES		No. of Permit		House Number		DATE OF PERMITS	
	Ground	Grade			North West	South East	North West	South East	North West	South East	North West	South East
				9+96.5	+44.5	+42.0						
9	106.61	101.61	5.00		+18.7	+16.2	#316	#1599	1000 Pattie	1001 Lulu	4-23-20	10-30-23
					+93.5	+91.0		#4743		1315 E. Gilbert		5-2-51
					+68.2	+65.7		#900		1007 Lulu		1-3-21
8	106.66	101.41	5.25		+43.8	+41.3	#1008		1008 Pattie		2-23-24	
					+17.5	+15.0						
				7+76.7	+93.1	+90.6	#584	#1702	1010 Pattie	1015 Lulu	3-27-24	11-19-23
					+67.5	+65.0	#925		1016 Pattie		8-1-22	
					+42.5	+40.0						
7	106.06	101.21	4.85		+17.0	+14.5						
					+92.3	+89.8	#842	#2466	1018 Pattie	1017 Lulu	0-16-24	11-3-24
					+67.0	+64.5	#310		1030 Pattie		8-22-20	
					+41.9	+39.4	#40182	#467	1025 R Lulu	1027 Lulu	5-2-22	5-31-21
6	106.71	101.01	5.70		+17.9	+15.4	#1278	#302	1000 Pattie		6-3-24	4-16-26
				5+73.0	+95.0	+92.5						
					+28.5	+26.0	10464 #642	#99	1102 R Pattie	1103 R Lulu	3-15-24	2-14-22
5	106.75	100.81	5.94		+04.3	+01.8					6-9-22	
					+78.3	+75.8	#4125	#331	1108 Pattie	1107 R Lulu	2-16-23	4-25-21
					+54.4	+51.9	#251		1111 Lulu			3-29-22
					+29.1	+26.6	#216		1114 Pattie		3-26-20	
4	106.83	100.61	6.22		+05.8	+03.3						
				3+74.1	+85.3	+82.8		#2167		1115 Lulu		10-1-54
					+62.1	+59.6	#283		1120 Pattie		4-16-20	
					+37.1	+34.6	#1782		1125 Lulu	1119 R Lulu	12-4-23	1-3-23
					+12.2	+9.7	#1037	#1096	1124 Pattie	1119 Lulu	10-27-21	5-13-24
3	108.11	100.41	7.70		+86.7	+84.2	#1884		1121 R Pattie		7-10-23	
				See next	+62.7	+60.2					12-20-23	
					+37.2	+34.7		#1742		1123 Lulu		11-26-23
					+11.9	+9.4	#1565	#848	1136 Pattie	1125 Lulu	10-23-25	8-1-25
2	108.31	100.21	8.10		+91.3	+84.8						
					+63.5	+61.0	#567	#1453	1148 Pattie	1131 Lulu	5-26-22	10-2-23
					+39.0	+36.5						
					+13.8	+11.3						
1	108.28	100.01	8.27		+88.9	+86.4	#392	#1294	1148 R Pattie	1145 Lulu	4-21-30	8-31-23
					+64.8	+62.3	#223		1146 Pattie		3-12-28	
					+38.5	+36.0	#996	#1238	1158 R Pattie	1316 E. Lincoln	7-9-23	12-8-47
0400	107.82	99.81	8.01				#1096		1149 Lulu		11-7-21	

#1785 Tap 1145 Lulu (Rear) 8-21-39 A.J. Kime
 #6071 Tap 1146 1/2 Pattie 10-8-51 Cowan Plog. Co.
 #2907 - 2 1/2" 8" w/ 1103 Lulu (Rear) Trailer - 10-26-56
 Submittal 01571 Colby 1040 S. Pattie (New Conn) COWAN PLOG. CO.