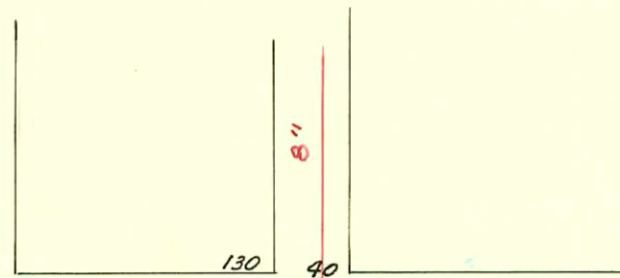
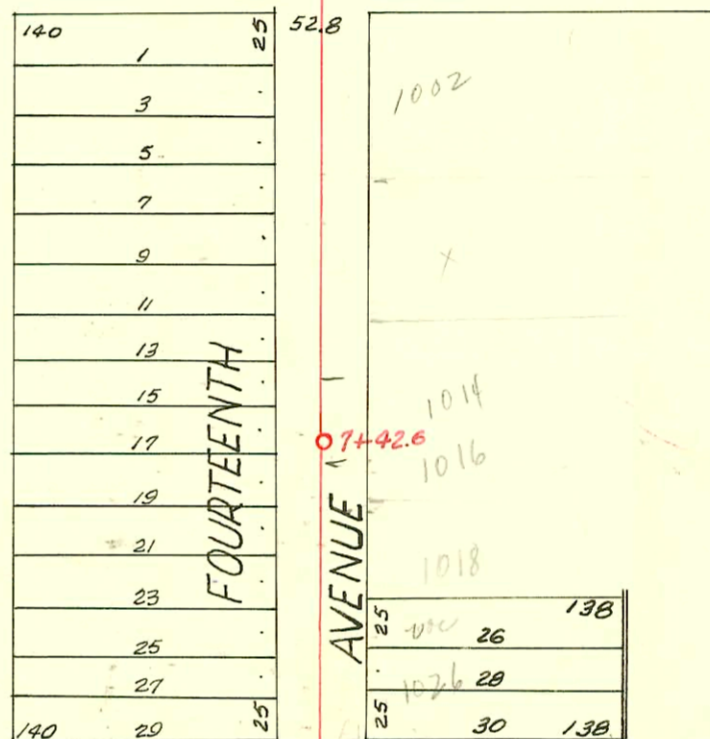


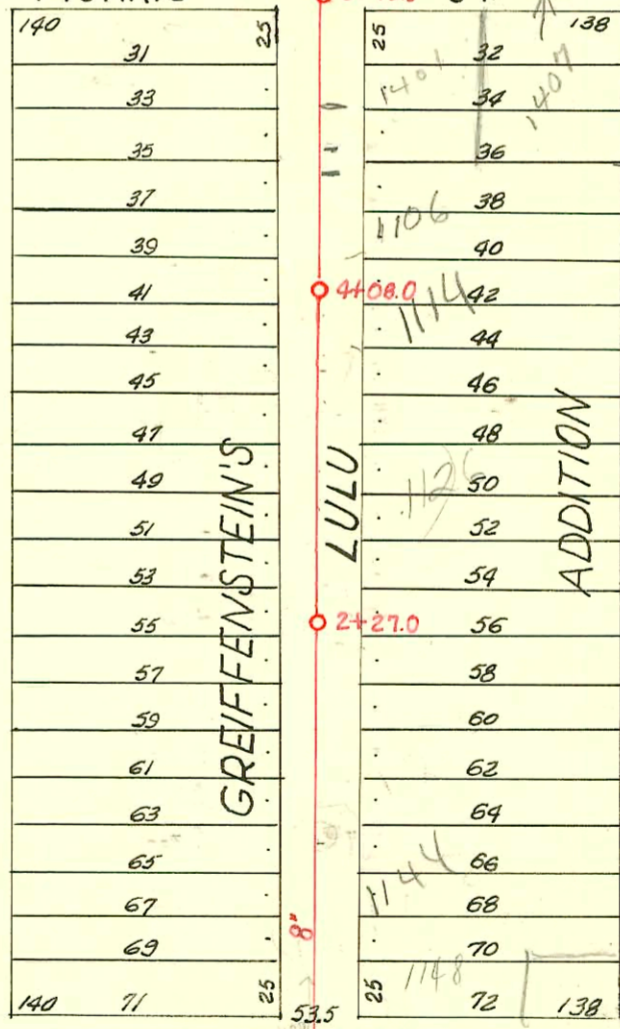
DIST. G - S.S. NO. 20
1919



GILBERT ST. 9+97.0 60'



MORRIS ST. 5+72.5



LINCOLN ST. 11+55.4

D-33

Form 41-(54) 8-58

CONSTRUCTION RECORD						SERVICE RECORD						
STATION	ELEVATION		Depth	MANHOLE	4-INCH "Y" BRANCHES		No. of Permit		House Number		DATE OF PERMITS	
	Ground	Grade			North West	South East	North West	South East	North West	South East	North West	South East
				+97.0	+36.5	+34.0						
9	106.50	101.28	5.22		+12.8	+10.3						
					+91.4							
					+68.9	+88.9		#784				8-29-21
					+46.7	+66.4						
					+24.0	+44.2						
8	106.95	101.08	5.87		+01.7	+21.5		#785				8-29-21
						+99.2						
					+79.4	+76.9		#275	1014 LULU			4-18-27
				+42.6	+57.2	+54.7						
					+34.9	+32.4		#439	1016 LULU			6-19-24
7	106.97	100.88	6.09		+12.0	+09.5		#775	1018 LULU			8-25-21
						+09.5						11-2-66
					+89.7							
					+68.0	+87.2		#141	1026 LULU			6-16-24
					+45.6	+65.5						
					+23.0	+43.1						
					+00.5	+20.5		#321				4-25-21
6	107.00	100.68	6.32									
				+72.5		+98.0						
					+38.6	+36.1						
					+15.7	+13.2		#3087	1403 E. MORRIS			2-4-41
5	107.18	100.48	6.70									
					+93.7	+91.2		#2277	1407 E. MORRIS	1415 E. MORRIS	2-19-41	10-9-23
					+70.8	+78.3		#594	1106 LULU			7-27-20
					+48.1	+45.6						
				+08.0	+25.9	+23.4						
					+02.5	+00.0						
4	107.18	100.28	6.90									
					+81.3	+78.8						
					+57.7	+55.2		#692	1116 LULU			9-10-20
					+32.9	+30.4						
					+12.2	+09.7						
3	107.48	100.08	7.40									
					+90.5	+88.0		#3073	1126 LULU			1-23-41
					+67.5	+65.0						
				+27.0	+45.3	+42.8		#3072	1130 LULU			10-8-65
					+23.2	+21.8			1130 LULU			1-23-41
					+00.2	+20.7						10-12-65
2	107.33	99.88	7.45									
						+97.7						
					+77.2	+74.7		#3071	1134 LULU			1-23-41
					+54.7	+52.2						
					+34.6	+32.1		#3070	1140 LULU			1-23-41
					+09.1	+06.6		#1546	1144 LULU			7-3-24
1	107.18	99.68	7.50									
					+88.7	+86.2						
					+63.2	+60.7		#81	1148 LULU			2-28-29
					+41.2	+38.7						
0+0												

TAP #1271 - 1016 1/2 LULU 5-16-52 FREDERICK PLBG. CO.

TAP #2963 - 1144 LULU 12-13-54 COWEN PLBG. CO.

691-1018 Lulu - 11-3-66 J.C. Lewis - tap