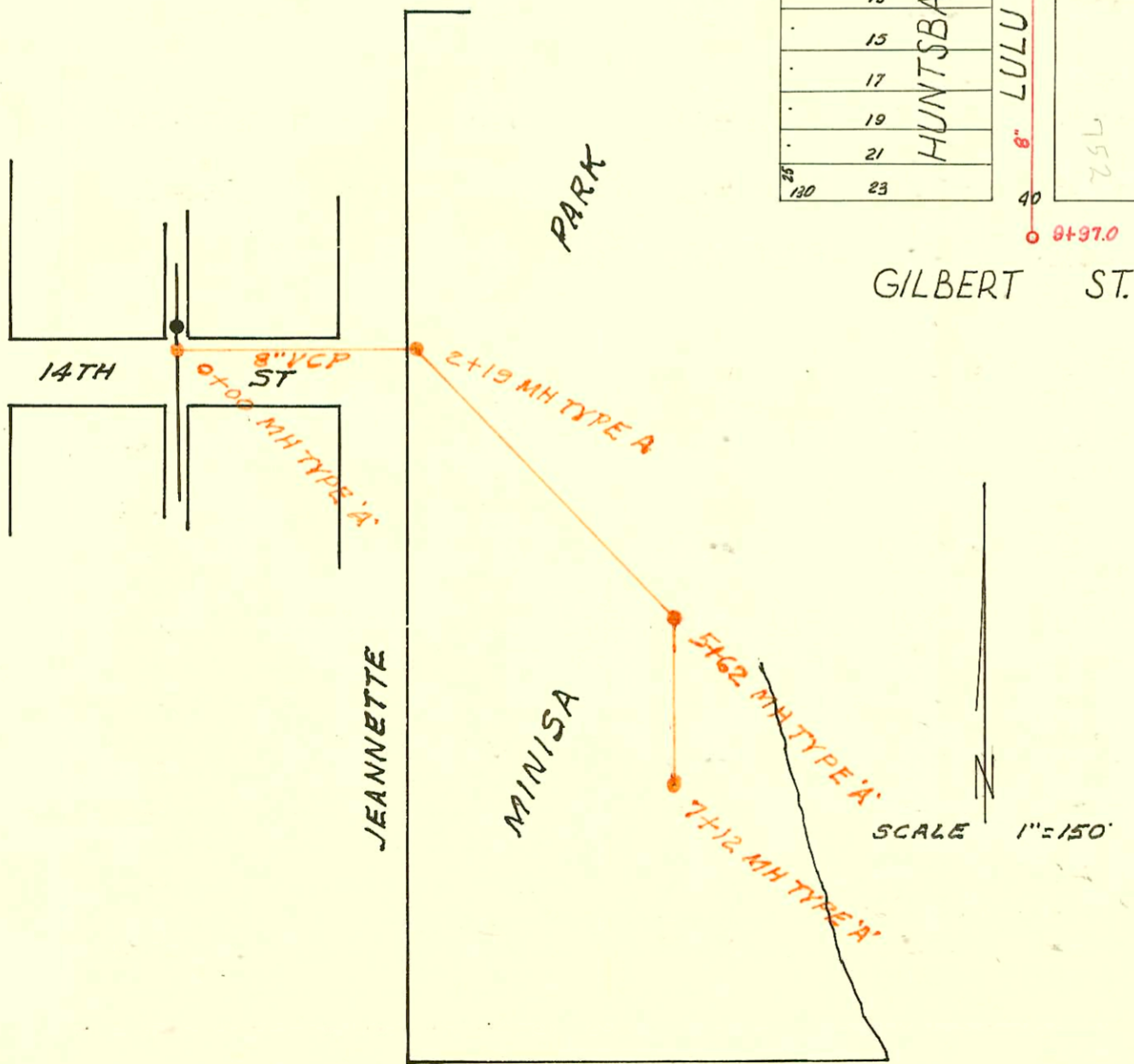


RIDGE PLAZA OFFICE PARK SAN SEWER
 BUILT BY: PEARSON CONTR. INC
 PROJ. NO 468-76-245-80626-000-000-008
 BOOKED 4-19-79 FROM 1H 92

INDIANAPOLIS ST.

140	30	140
25	32	25
	34	
	36	
	38	
	40	
	42	
	44	
	46	
25	48	25
140		140
130	1	
25	3	
	5	
	7	
	9	
	11	
	13	
	15	
	17	
	19	
	21	
25	23	25
130		140

DIST. G - S.S. NO. 20
 1919



MINISA PARK SAN SEWER
 BUILT BY: PARK BOARD (1956)
 PROJ. NO (PRIVATE)
 BOOKED 4-18-79 FROM PLAN

CONSTRUCTION RECORD						SERVICE RECORD						
STATION	ELEVATION		Depth	MANHOLE	4-INCH "Y" BRANCHES		No. of Permit		House Number		DATE OF PERMITS	
	Ground	Grade			North West	South East	North West	South East	North West	South East	North West	South East
RIDGE PLAZA OFFICE PARK S.S.												
0+00	140.4	130.10	10.3	EXISTING								
						8+83.2		C 71261		528 1450		4-13-79
1+00	140.7	130.50	10.2									
	140.5	130.59	9.9	1+22.5	8" STUB NNE							
MINISA PARK SAN SEWER												
0+00	119.1	112.78	6.3	0+00								
1+00	119.5	113.53	6.0									
2+00	119.7	114.28	5.4									
	119.6	114.42	5.2	2+19								
		114.52	5.1									
3+00	119.9	114.92	5.0									
4+00	120.5	115.43	5.1		See Permit for details			C13426		1450 (Bathroom) panetta		8-6-79
5+00	121.2	115.93	5.3									
	120.6	116.24	4.4	5+62.0		5+23.6		C 72835		1450 panetta		7-9-79
		116.34	4.3									
6+00	120.8	116.53	4.3									
7+00	121.6	117.03	4.6									
	121.6	117.09	4.5	7+12.0								
					+61.6							
						+55.5		#934		700 LULU		4-24-24
						+42.5				708 LULU		8-21-51
						+25.5		#5653				
						+07.5						
15	107.93	102.48	5.45			+85.1	+82.6					
						+63.0	+60.5	#11		712 LULU		1-4-22
						+40.3	+37.8					
						+20.3	+17.8	#1067				11-10-21
14	107.38	102.28	5.10			+76.2	+73.7					
						+51.2	+48.7					
						+28.2	+25.7					
						+06.5	+04.0					
13	107.45	102.08	5.37			+84.0	+81.5	#1602		728 LULU		4-27-42
						+61.8	+59.3					
						+39.5	+37.0					
						+17.2	+14.7	#1603		732 LULU		4-27-42
12	106.75	101.88	4.87									
					+94.2							
						+94.8	+92.3					
						+72.4	+69.9	#1718		738 LULU		5-7-42
						+49.0	+46.5					
						+27.5	+25.0	#1719		742 LULU		5-7-42
						+04.9	+02.4	#1720		748 LULU		5-7-42
11	106.85	101.68	5.17									
						10+82.5	10+80.0					
						10+60.4	10+57.9	75 3171-7 95-3136-7 #246		752 LULU		3-13-25 3-8-25
						10+37.5	10+35.0			752 LULU		2-20-24
10	106.45	101.48	4.97									
					9+97.0							