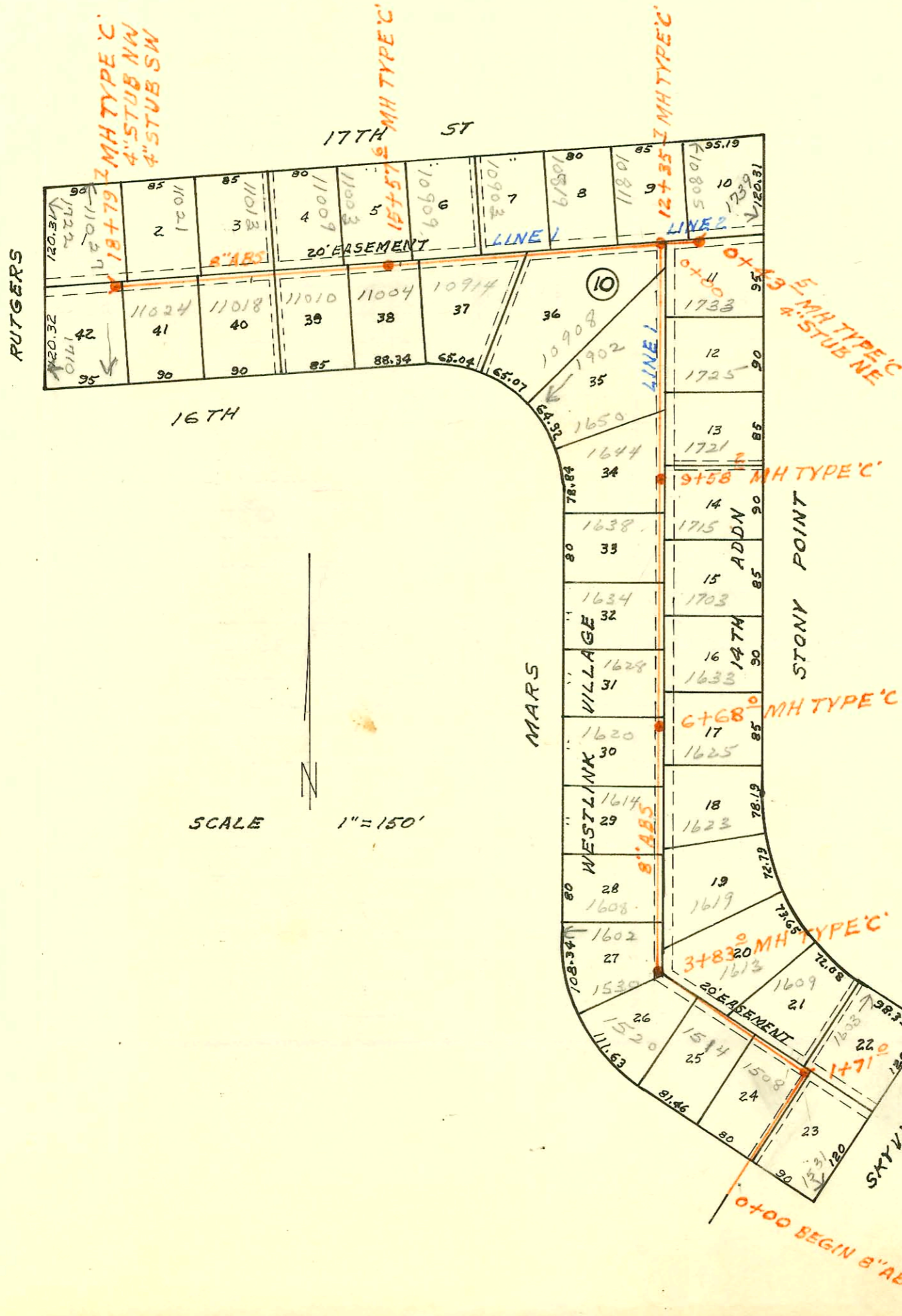


LATERAL 106 SOUTHWEST INTERCEPTOR
BUILT BY: UTILITY CONTR. INC.
PROJ. N^o DBKL 577043
BOOKED 12-13-78 FROM LES 10A

on map

SCALE 1"=150'



SCALE 1"=150'

LATERAL 92 SOUTHWEST INTERCEPTOR
BUILT BY: UTILITY CONTR. INC.
PROJ. N^o DBKL 577029
BOOKED 12-15-78 FROM LES 10A

on map

0+00 BEGIN 8" ABS PIPE

10' HIGH
MHTAP APP

CONSTRUCTION RECORD

SERVICE RECORD

STATION	ELEVATION		Depth	MANHOLE	4-INCH "Y" BRANCHES		No. of Permit		House Number		DATE OF PERMITS	
	Ground	Grade			North West	South East	North West	South East	North West	South East	North West	South East
LATERAL 106 SOUTHWEST INTERCEPTOR												
LINE 1 0+00	157.6	146.10	11.5	EXISTING LINE								
1+00	157.5	146.53	11.0		1+26.4		7542		1509 N. LARK			2-28-83
	157.7	146.68	11.0	1+36.0	1+78.3		076322		1602 Skyview		1-24-80	
							930		1608 Skyview		7-23-80	
2+00	157.6	146.93	10.7		2+48.8		8316		1511 N. LARK			6-8-83
							9188		1662 Skyview		12-5-83	
3+00	158.0	147.33	10.7		3+54.8		829		1519 WALK			7-24-80
	158.0	147.55	10.5				5827		1603 LARK			7-24-80
	158.0	147.65	10.4				2419		1618 Skyview		1-20-81	
4+00	158.3	147.83	10.5		4+28.8		2901		1613 LARK N			3-23-81
5+00	158.5	148.23	10.3		5+03.4	5+12.8	2418	2828	1624 Skyview	1625 LARK	1-20-81	7-23-80
					5+82.0	5+89.0	8300	2542	1630 Skyview	1633 LARK	6-2-83	6-11-80
6+00	159.0	148.63	10.4		6+57.0		8266		1638 N. Skyview			6-1-83
	158.9	148.86	10.0				076115		1639 LARK			1-15-80
7+00	159.0	149.03	10.0		7+68.0	7+72.0	2230	076114	1702 Skyview	1705 LARK	12-30-80	1-15-80
8+00	159.2	149.43	9.8		8+30.4	8+46.4	5699	076113	1710 Skyview	1711 LARK	4-22-82	1-15-80
9+00	159.4	149.83	9.6		9+61.4		2495	070562	1718 Skyview	1719 LARK	10-21-83	3-9-79
	159.2	150.08	9.1				7745	070454	1722 Skyview	1723 LARK	3-23-83	3-20-79
10+00	159.5	150.23	9.3		10+31.3		4783	071307	1720 Skyview	1729 LARK	12-29-81	4-18-79
							270556		1733 Skyview	1733 LARK		3-9-79
11+00	159.3	150.63	8.7		11+18.7	11+21.4	7744	075200	1736 Skyview	1739 LARK	3-23-83	
								8229	1740 Skyview	1739 LARK	11-5-79	5-24-83
12+00	159.5	151.03	8.5		12+66.3	12+66.3						
	160.0	151.30	8.7	12+66.3	12+66.3	12+66.3						
LINE 2												
0+00	158.0	147.65	10.4	0+00=3+54.8 LINE 1								
1+00	158.1	148.05	10.1									
1+32.2	158.0	148.17	9.8									
LATERAL 92 SOUTHWEST INTERCEPTOR												
0+00	158.7	145.84	12.9	BEGIN PIPE								
1+00	158.6	146.24	12.4		1+35.2		071591		1531 Skyview			5-2-79
	158.7	146.52	12.2				00331		1603 STONY PT.			5-19-80
	158.7	146.62	12.1	1+71.0	1+71.0	1+71.0						
2+00	159.0	146.74	12.3		2+05.0	2+21.0	072769	8629	1508 Mans	1609 Stony Pt.	7-6-79	7-6-83
					2+69.0		071592		1514 Mans		5-2-79	
3+00	160.0	147.14	12.9		3+83.0		072790	071843	1520 Mans	1613 Stony Pt.	7-6-79	3-12-80
	160.4	147.48	12.9				075199		1619 Stony Pt.			11-5-79
	160.4	147.58	12.8				074325		1600 Mans		9-19-79	
4+00	160.5	147.64	12.9		4+20.0		2531		1608 Mans		2-3-81	
					4+77.4		072651		1614 Mans			
5+00	160.7	148.04	12.7		5+31.5		072817		1623 Stony Pt.		7-2-79	7-10-79
							074151	652	1620 Mans	1625 Stony Pt.	6-30-80	9-7-79
6+00	161.2	148.44	12.8		6+68.0	6+54.2	784	1157	1628 Mans	1633 Stony Pt.	7-18-80	9-8-80
	161.4	148.72	12.7				5990		1634 Mans		6-10-82	
7+00	161.6	148.84	12.8		7+24.2	7+44.2	267	072850	1638 Mans	1703 Stony Pt.	5-8-80	2-10-79
					7+76.0							
8+00	161.8	149.24	12.6		8+66.2	8+34	1687	074554	1644 Mans	1715 Stony Pt.	11-4-80	9-28-79
	162.3	149.64	12.7		9+58.2	9+28.4						
	162.7	149.87	12.8				0774		1721 Stony Pt.			7-17-80
10+00	162.8	150.04	12.8		10+09.0		074152		1650 Mans	1725 Stony Pt.	3-17-80	
					10+60.2	10+78.5						
11+00	163.4	150.44	13.0		11+80.6		072849		1733 Stony Pt.			7-10-79
							074152		1735 Stony Pt.			9-7-79
12+00	163.5	150.84	12.7		12+35.7	12+45.5	1411		10811 W 172A N		10-2-80	
	163.5	150.99	12.5									
	163.5	151.09	12.4									
13+00	163.6	151.34	12.3		13+07.7				10317 W 171A		6-11-80	

CONT'D NEXT PAGE