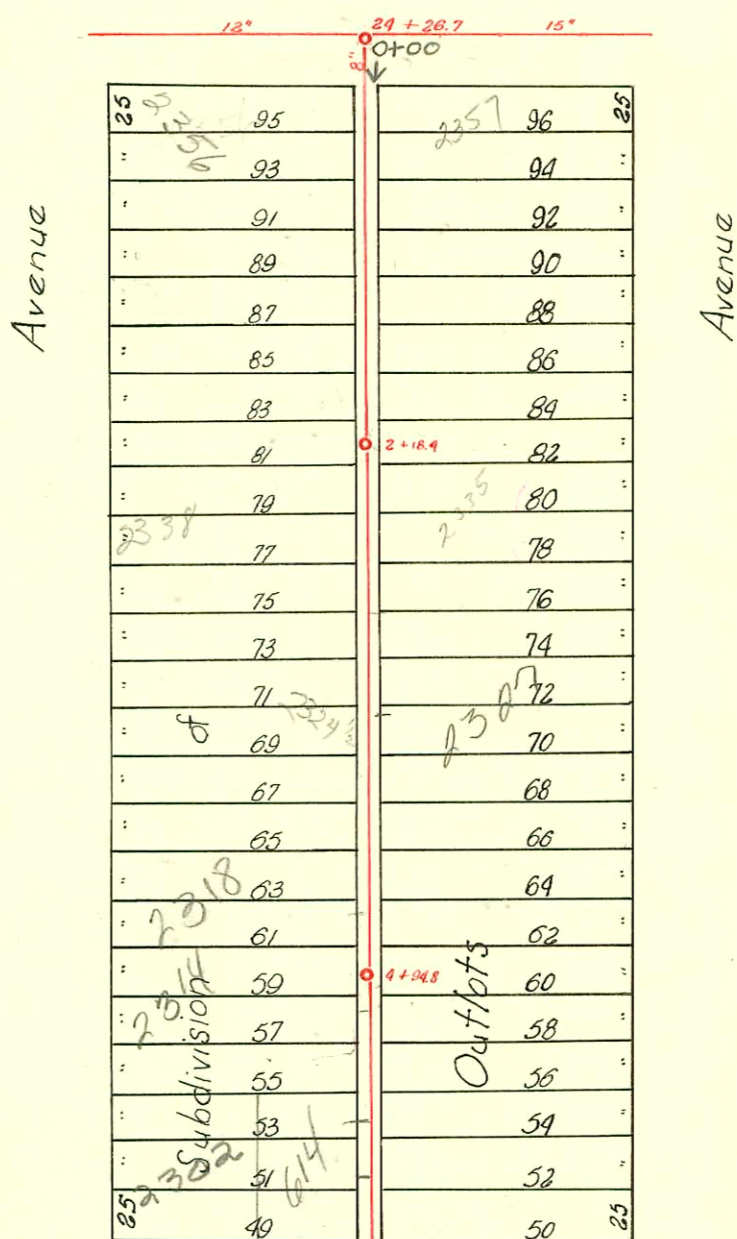
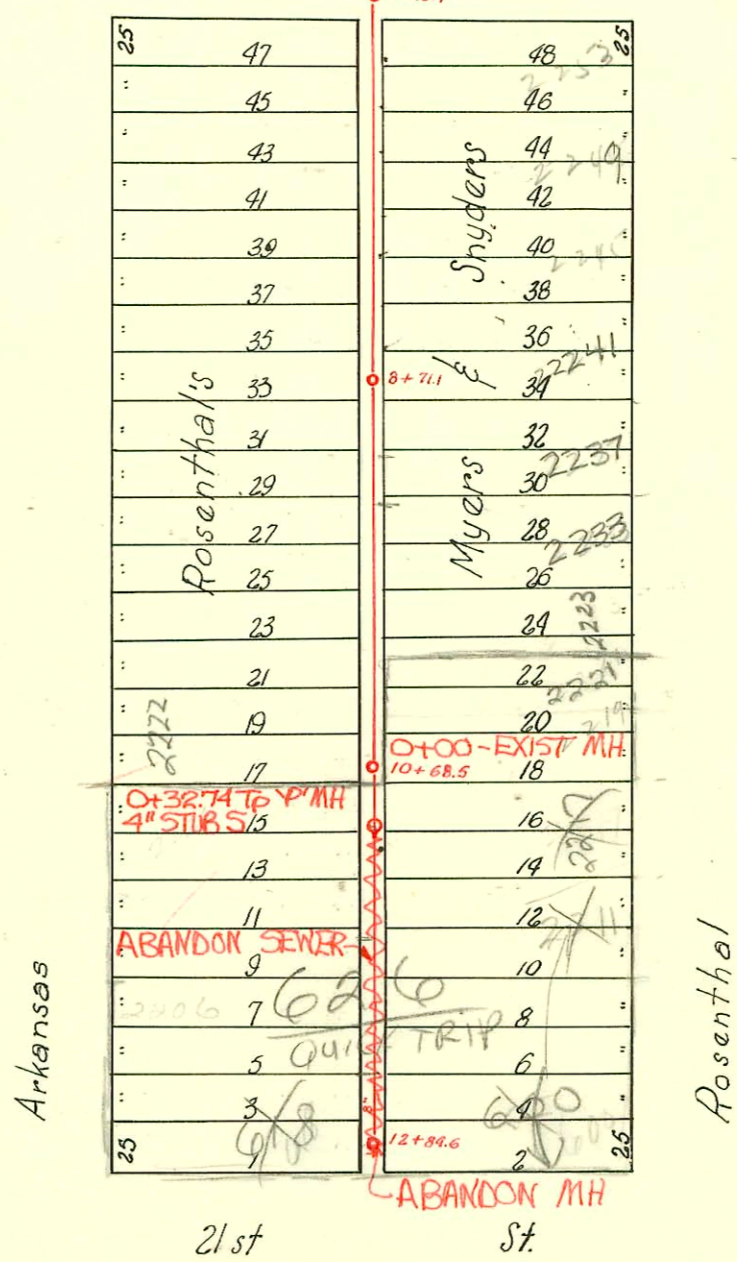


LAT. A - DIST. T - S.S. NO. 20  
1919

23rd St.



22nd St.



2002-01351- 5/14/02 2237 Rosenthal  
Boardman Ent- 4" sch 40 replace  
all but lower 5', 11w/100, 2H45

PRIVATE SANITARY SEWER TO SERVE QUIK TRIP  
6TH ADDITION  
PRIV. PROJ. NO. 576 PPS (607861)  
BUILT BY DONDLINGER & SONS CONST. CO.  
BOOKED 12-4-95 FROM AS BUILTS

CONSTRUCTION RECORD						SERVICE RECORD						
STATION	ELEVATION		Depth	MANHOLE	4-INCH "Y" BRANCHES		No. of Permit		House Number		DATE OF PERMITS	
	Ground	Grade			North West	South East	North West	South East	North West	South East	North West	South East
0+0	122.99	115.76	7.23	0+00	0+42.0	44.5		#2226	2357	Rosenthal		10-2-24
					0+66.8	69.3		#2227	2355	Rosenthal		10-2-24
1	123.32	115.91	7.41		+92.7	95.2	#00239 2971		2356 R	Arkansas	5-6-50	
					1+23.0		#563		2356	Arkansas	11-3-50	
					+32.5	+35.0		#2616	2353	Rosenthal	6-13-50	
					+57.5	+60.0						
					+82.7	+85.2		#489	2346	Arkansas		11-26-24
2	122.87	116.06	6.81		+07.8	110.3	#566		2356 N	Arkansas	6-13-80	
				+18.4	+33.0	135.5		#1848 #998	2338	Arkansas	8-27-64	
					+58.3	+60.8		#2255	2320	Rosenthal	9-10-25	10-4-24
					+82.6	+86.1		#2521	2336	Arkansas	7-11-73	
					2+05						11-11-24	
3	122.67	116.21	6.46		3+08.3	3+10.8	#1468 #2132	#2384	2320	Arkansas	9-17-24	10-22-24
					+33.8	+36.3			2325	Rosenthal		
					+58.7	3+61.2	#55865 #2807	#3307 #3494	2324	Arkansas	6-10-76	2-12-90 2-14-50
					+84.4	+86.9		#362	2324	Rosenthal	10-24-24	9-19-72 10-8-47
4	122.47	116.36	6.11		+09.5	+12.0	#5654 #2458		2322	Arkansas	5-17-66	
					+34.7	+37.2					11-1-24	
					4+62.6	+65.1	#2492 #722	#412	2318 S10	Arkansas	3-12-90	
					+87.5	+90.0			2317	Rosenthal	7-1-25	4-22-29
5	122.57	116.51	6.06		5+13.0	+15.5	#24919 #91	#400	2314 S10	Arkansas	3-12-90	
					+38.8	+41.3		#2394	2310	Arkansas	2-19-25	4-19-29
					+63.7	+66.2	#2691 #2800	#7688	West 22nd		6-20-90	11-10-49
					+88.7	+91.2	#572	#2252	619 S10	West 22nd	12-11-24	11-18-05
6	122.27	116.66	5.61		+13.7	6+16.2			2303 S10	Rosenthal	8-9-47	3-6-83 10-3-24
7	122.32	116.81	5.51		+02.5	+05.0	#27990 #868		2255	Rosenthal		3-29-73 10-11-26
					+27.6	+30.1	#1079		2248	Arkansas	11-6-47	
					+52.7	+55.2			2248	Rosenthal		4-28-84 10-24-84
					+78.1	+80.6		#1361 #2398				
8	121.72	116.96	4.76		+03.7	+06.2	#1059	#2292	2238	Arkansas	10-14-73	7-11-93 10-11-24
					+28.5	+31.0			2234	Arkansas	9-23-28	
					+64.2	+66.7	#302		2234	Arkansas	3-23-28	
					+84.3	+86.8						
9	121.79	117.11	4.68		+09.3	4" SCH 40 +11.8	#1832	#1794	2234	Arkansas	8-11-24	5-14-02 9-26-49
					+34.1	+36.6		#178	2245	Rosenthal		3-9-25
					+59.5	+62.0		#681	2233	Rosenthal		9-18-46
					9+84.7	+87.2	#335	#2308	2230	Arkansas	5-2-27	10-19-24
10	121.84	117.26	4.58		+09.7	+12.2	#43		2226	Arkansas	1-18-28	
					+34.0	10+37.5	#303	#2256	2222	Arkansas	1-11-39	9-12-95 10-10-24
					+50.7	+52.6	#345	#2256	2212 S10	Arkansas	12-22-26	4-21-72
					+88.3	10+90.8			2219	Rosenthal	4-6-28	10-4-24
11	121.84	117.41	4.43		+13.3	11+15.8	#14247 #385	#1709	2217 S10	Rosenthal	9-12-95	5-2-37
					+37.7	11+40.2	#551		2217	Rosenthal	1-30-57	12-10-31
					+63.0	+65.5			2208 S10	Arkansas	7-6-24	
					+88.2	+90.7			2208 S10	Arkansas	7-14-82	
12	121.54	117.56	3.98		12+13.2	+15.7	#16203 #2022	#1497	2206 S10	Arkansas	10-5-62	
					12+38.0	12+40.5			2200	Arkansas	9-5-24	9-12-95
									West 21st		6-26-24	5-13-38
											4-18-57	

Private Sanitary Sewer To Serve Quik Trip 6TH Addition  
 0+00 121.80 117.26 4.5 0+00  
 123.00 117.42 5.6 0+32.74 4" S. 117.58

95-158307 10-6-95 (618 W 21st) (add old west) slo wye 12138 5' off Main

#108-Tap-2252 Arkansas Feb. 15, 1926  
 #679-620 West 21st - 76-26  
 #169-Tap-2366 Arkansas-2-8-31-R.H. Anderson  
 #153-Tap-2324 Arkansas-6-7-08-R. La Fay  
 #1386-Tap-2329 Arkansas-4-18-51-Coleman Pkg.  
 #616-Tap-2359 Arkansas-3-20-52-C.R. Leidy  
 #1292-Tap 2356 N Arkansas 7-9-58 J.C. Adams  
 #71473-2055 Rosenthal-4-27-79-New Conn (Tap 7+25.4)  
 C 55865-2324 1/2 Arkansas - Seal off 6/10/76 at Rutledge