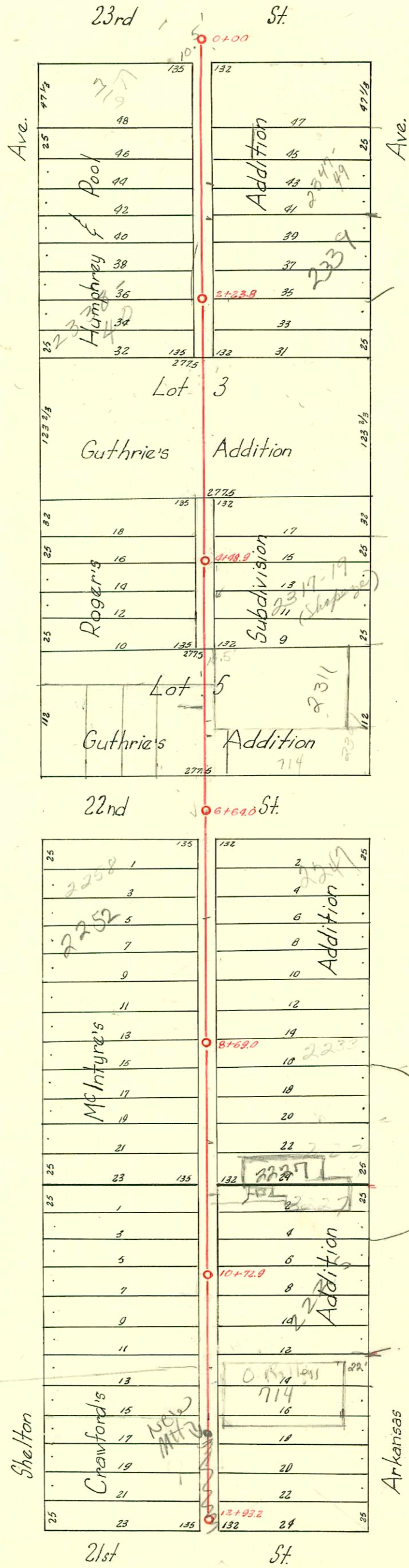


LAT. E - DIST. T - S.S. NO. 20

1930



No record of when
line abandoned or
when new
MT built.
Believe some
time around
1996
SK

9-12-28
Lots 10 to 21 even, inclusive, not to be assessed for sewer lateral as they have
paid their share in building lateral across 21st Street from the South.
PL Brockway
by H.R.M.
Permit # 980 issued to Wilson Pkg. Co. for 2205 Arkansas. 9-11-28

(grease trap)
Sept 2002-62981 11-5-02 2227 N Arkansas Ron's Pkg's: 1000 gal grease trap, 4" 40 PVC
2TWIN CO, 1WYE, 2H45, 1V45
Sept 2002-07982 11-5-02 2227 N Arkansas - Ron's Pkg's: 2TWIN CO, 4" sch 40 PVC, 1WYE
for 2nd Kickout, 1 1/4" fall, 3H45, laid out from bldg aprx 25' (owner didn't want to
replace entire line at this time)

CONSTRUCTION RECORD						SERVICE RECORD						
STATION	ELEVATION		Depth	MANHOLE	4-INCH "Y" BRANCHES		No. of Permit		House Number		DATE OF PERMITS	
	Ground	Grade			North West	South East	North West	South East	North West	South East	North West	South East
0+00	122.16	116.00	6.16	0+00								
					0+46.1	0+43.6	#721	#505	719 R	619	4-21-54	6-12-30
					0+73.0	0+75.0	#720	#204	West 23rd	West 23rd	see below	6-23-30
					1+01.5	0+99.0			723	Arkansas	4-21-54	6-16-30
1+00	123.56	116.10	7.06		1+27.5	1+25.0	#719	#1497	2359	2349	4-21-54	6-2-52
					1+56.2	1+53.7	#761	#761	Shelton	Arkansas	on WPL at NPL	5-24-31
					1+84.8	1+82.3	#632		2344			7-29-30
									Shelton		6-23-30	
2+00	123.66	116.20	7.06	2+23.8	2+11.1	2+08.6	#1110	#4494	2338-42	2331 R	2-28-77	4-894
		116.22			2+38.7	2+36.2	#648	#648	Shelton	Arkansas	7-10-30	6-20-30
					2+64.5	2+62.0						
					2+90.9	2+88.4						
3+00	123.94	116.30	7.64		3+24.9	3+22.4		#588		2327		6-10-30
					3+51.7	3+49.2				Arkansas		
					3+85.5	3+83.0						
4+00	123.70	116.40	7.30		4+06.5	4+04.0						
		116.45		4+48.9	4+42.9	4+40.4			C15276	2317-19		8-5-69
					4+82.3	4+79.8			#630	Arkansas		6-23-30
					4+94.0	4+91.5						
5+00	123.08	116.50	6.58		5+18.7	5+16.2						
					5+41.5	5+39.0	#7197		2308-10		12-16-82	
					5+72.7	5+70.2	#823	#631	718		8-27-30	4-16-74
						5+82.4			West 22nd	2306		6-23-30
										Arkansas		
6+00	123.18	116.60	6.58		6+20.5	6+17.7						
		116.66		6+64.0	6+39.5	6+37.0						
7+00	122.51	116.70	5.81		7+08.5	7+06.0	C31457	#728	2258	2247	4-10-72	7-12-58
					7+31.5	7+29.0	#749	#749	2260	2243	7-26-30	12-10-65
					7+57.5	7+55.0	#731	#615	Shelton	Arkansas	7-21-30	6-18-30
					7+80.9	7+78.4			2249	2243		
8+00	122.71	116.80	5.91		8+07.4	8+04.9	#248		Shelton	Arkansas	7-2-36	
					8+34.6	8+32.1	#678		2248			7-5-30
		116.87		8+69.0	8+58.5	8+56.0	#628		2239	2239		6-23-30
					8+82.3	8+79.8	#1932	#627	2242	2233	2-13-97	10-26-63
					9+09.2	9+06.7			Shelton	Arkansas		6-23-30
9+00	122.20	116.90	5.30		9+31.9	9+28.9			2230	2230		5/21/99
					9+58.0	9+55.5	#675	#629	2250	2228	7-3-30	1-3-67
					9+81.8	9+79.3	#714		Shelton	Arkansas		6-23-30
10+00	122.53	117.00	5.53		10+07.7	10+05.2	#715	#7604	2239	2227 N	7-15-30	7-15-30
					10+30.4	10+27.9			Shelton	Arkansas		4-27-00
		117.07		10+72.9	10+56.1	10+53.6						7-31-58
					10+80.5	10+78.0	#1475		2218			
11+00	123.23	117.10	5.13		11+02.5	11+00			Shelton	Arkansas	6-30-50	
					11+29.1	11+26.6	#1476		2212			6-30-50
					11+55.4	11+52.9	#82		2210			7-17-33
					11+81.5	11+79.0			Shelton			
12+00	121.63	117.20	4.63		12+05.1	12+02.6						
					12+28.5	12+26.0			9618097	714 w/ NPL		9-2-96
					12+48.5	12+46.0				81st		
		117.29		12+93.2								

2003-02794 10/28/03 2347 N Arkansas - Royal P/bg - Grease Interceptor 1,400 gal - 1-4" wye for grease line, 2 twin ea 4" Sch 40 PVC, 11" fall - tied to claytile 12' from main

C15276-2317-19 N Arkansas - D. Thompson - 8-6-69 - top (5+15.9)
 C6377-2325 Arkansas (Post Office) Beth Willard 1-10-68 - top (3+89.9)

1009 R #959 - top - 2225 Arkansas - 4-21-52 - C.R. Laidy - tied into existing sewer line at clean out area. (2 ft outside stay tied)
 #594 - top - 2301 Arkansas - 6-11-30 - C.E. Hafford (4-15-16 Van Winkle 66' N of C1610) - 51980
 Private line - 722 West 22nd - 3-29-32 - Albert Des Noyers
 #5747 - Private line - 718 West 22nd - 9-4-51 - Tess Hanna, Jr.
 13105 Top 2311 N Arkansas at Henning 7-21-60 (5+30)
 2311 N Arkansas - 94-4494-7 - 4" Sch 40 Abs - 10' fall DC. upward 20 ft pipe from house cut tied onto existing ABS line