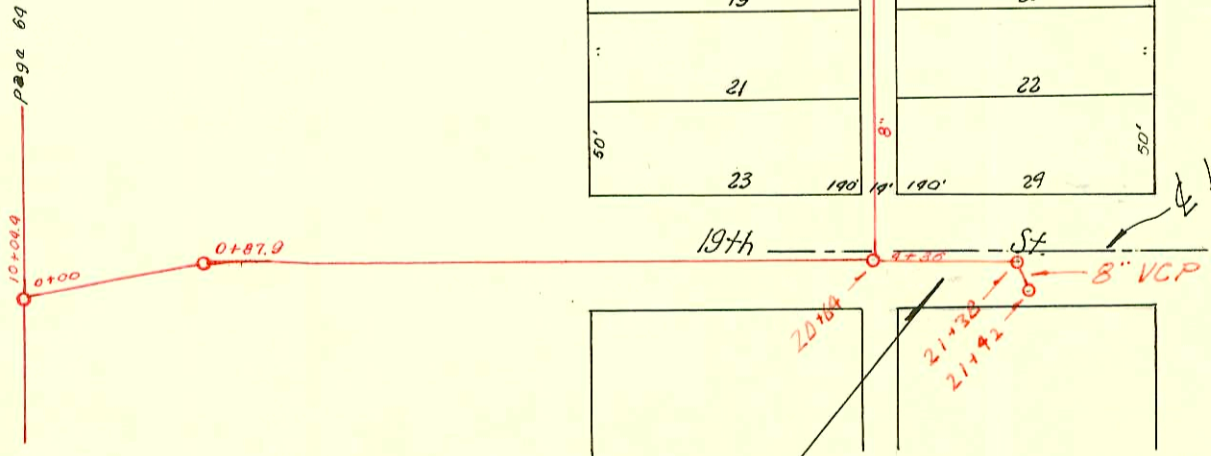
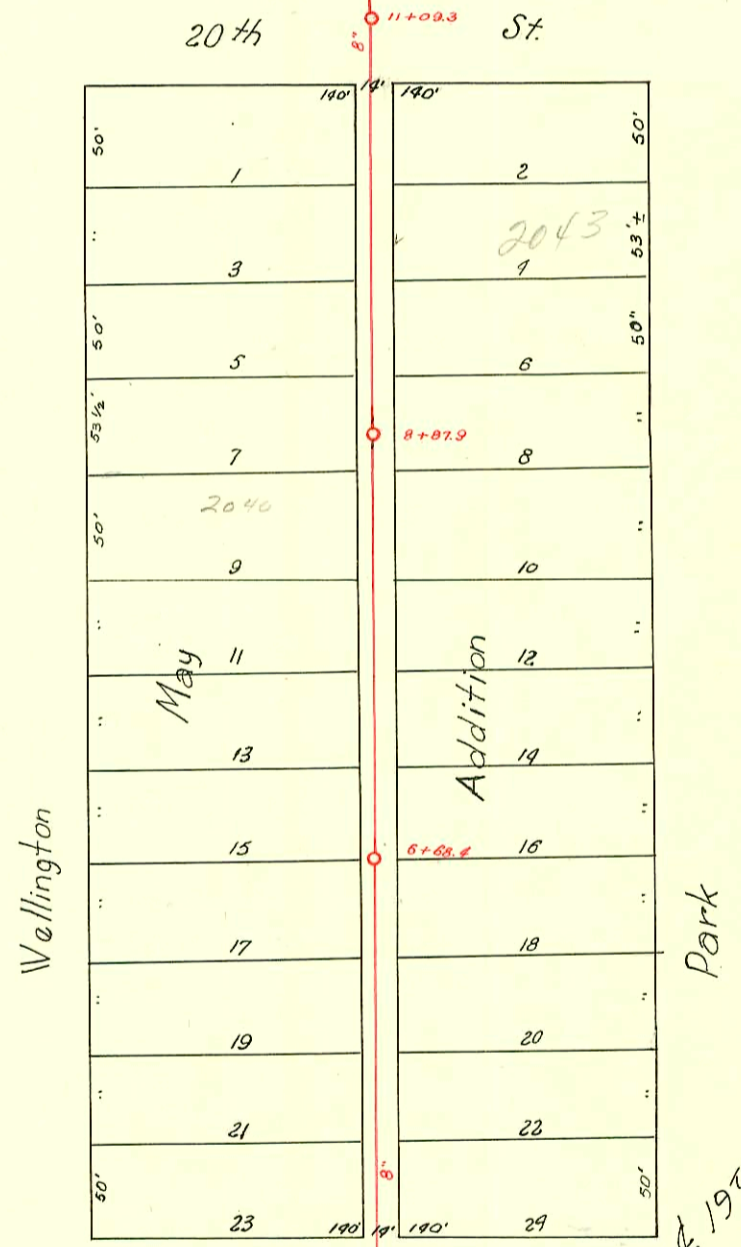
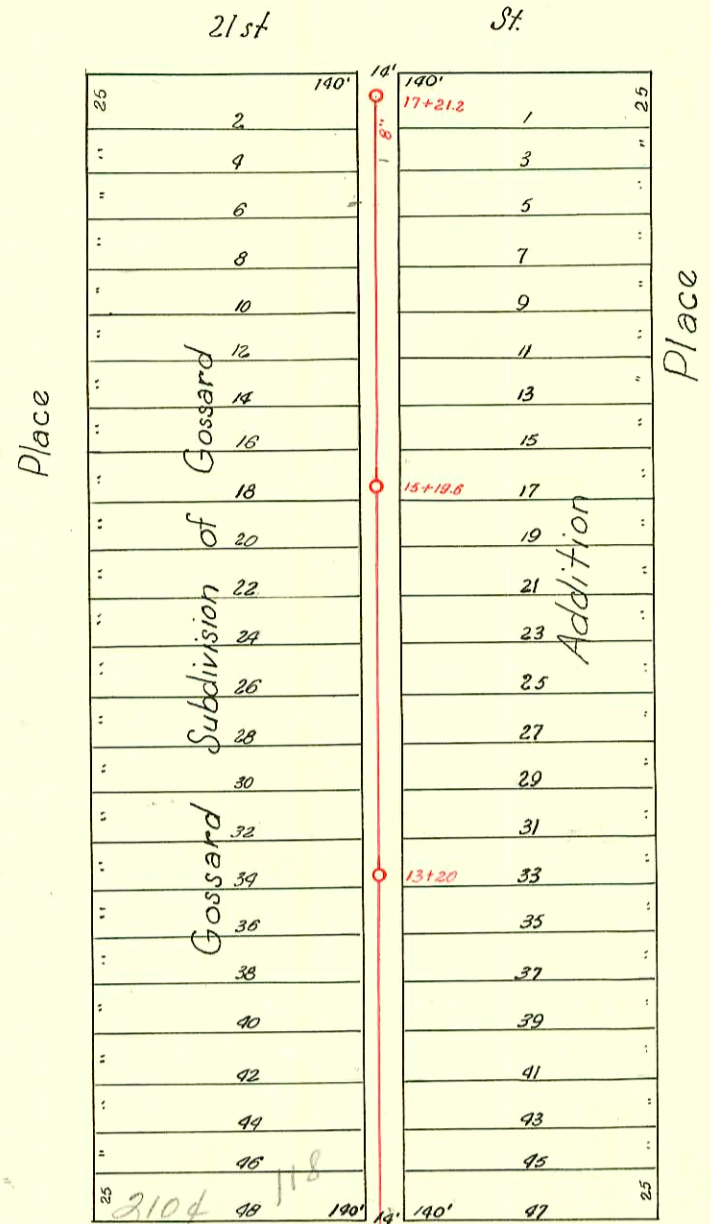
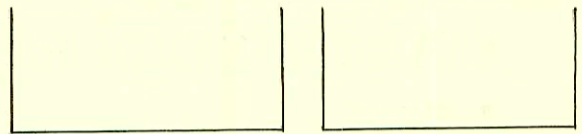


DIST. A - SUB-MAIN 2-1919
 &
 LAT. E - SUB-MAIN 2-1918
 S.S. NO. 20



SAN SEWER IN CONNECTION
 WITH DRAINAGE IMPROVEMENTS
 WALD-FINN PROJECT.
 BOOKED 18 JAN 73 FROM PLAN

D-56

CONSTRUCTION RECORD							SERVICE RECORD						
STATION	ELEVATION		Depth	MANHOLE	4-INCH "Y" BRANCHES		No. of Permit		House Number		DATE OF PERMITS		
	Ground	Grade			North West	South East	North West	South East	North West	South East	North West	South East	
4	124.99	117.02	7.1	+36	+78.5	+76	#1202		2004 N. Water	2005 Park Place	6-27-18	9-4-19	
5	123.36	117.12	6.24		+04	+01.5	#243			2007 Park Place		11-20-35	
					+30	+27.5							
					+55.5	+53							
					+78.5	+76							
						+99							
6	122.19	117.22	4.97		+01.5		#380		2012 N. Water		6-27-18		
					+28.5	+24	#1577			2009 Park Place			
			4.8	+68.4	+55.5	+53	#583			2021 N. Main		6-29-18	
					+80.5	+78	#			2021 Park Place		5-18-27	
7	121.63	117.32	4.31		+06	+03.5	#387						
					+31.5	+29	#						
					+57.5	+55	#1515					11-9-22	
					+81.5	+79	#994			2021 Park Place		7-7-23	
8	121.53	117.42	4.11		+05.5	+03							
					+30.9	+28.4	#659			2039 N. Main		8-27-20	
					+55.5	+53	#533			2035 N. Main		8-30-18	
			4.53	+87.9	+79.5	+77	#33629					1-7-81	
9	122.49	117.52	4.92		+04.5	+02	#574		2030 Wellington		6-21-65		
					+30	+27.5					4-19-23		
					+55.5	+53	#3230			2034 Wellington		2-6-50	
					+81.5	+79	#10264			2043 Wellington		5-12-59	
10	122.56	117.62	4.88		+03.5	+03.5	#534			2040 Wellington		1-7-81	
					+30	+27.5						8-30-18	
					+54.4	+52.9	#2301			2040 Wellington		1-7-81	
11	122.29	117.72	5.2	11+09.3	+36.5	+34	#532		2104 Wellington	2101 Park Place	10-31-58		
					+62.5	+60	#549	#1573			3-24-24	10-25-23	
					+87.9	+85.4	#534			West 20th		7-2-48	
12	122.26	117.82	4.43		+10.5	+08	#789			2108 Wellington		9-19-27	
					+35.8	+33.3				2107 Park Place		11-26-23	
					+59.5	+57	#790	#208		210 Wellington		9-19-27	
					+82.3	+79.8						4-4-21	
13	122.12	117.92	4.1	+20	+08	+05.5				215 Park Place		5-22-24	
					+33.5	+31	#404			217 N. Main		7-15-18	
					+58.7	+56.2							
					+83.7	+81.2	#1201			2121 N. Main		9-16-22	
14	122.47	118.02	4.45		+02.5	+07	#285		2128 N. Water		4-11-21		
					+35.5	+33	#304		2132 N. Water		4-18-21		
					+61	+58.5	#873	#897		2130 Wellington	2125	8-7-25	
					+86.5	+84	#381			2130 Wellington		5-15-20	
15	123.35	118.12	4.85	+19.6	+12	+09.5							
					+37.5	+35						11-14-22	
					+62.9	+60.4						5-9-19	
					+87.4	+84.9	#1502						
							#897						
16	123.11	118.22	4.89		+13.7	+11.2	#208		2146 Wellington		5-9-19	2-15-24	
					+39.5	+37	#1073		2146 Wellington		5-10-24		
					+65.5	+63	#1069	#402		2148 Wellington	2153 Park Place	4-19-29	12-1-27
					+91	+88.5	#112	#155		2158 Wellington	2157 Park Place	2-24-25	2-11-24
17	123.84	118.32	4.73		+15	+13.5				107 West 21st		10-26-51	
			4.5	17+21.2			#6274						

SAN. SEWER IN CONNECTION WITH DRAINAGE IMPROVEMENTS: WACO-FINN PROJECT

20+80												
	123.4	118.28	5.1	20+64 EXIST.								
21+00												
	124.4	118.58	6.8	21+38								
	124.4	118.71	5.7	21+42								

2316	3040 Wellington Place		1-8-81	Eric Carter	11+09.3							(top 8+18.0)
2317	3040			E								(top 7+90.4)
2318	3040			F								(top 7+04.7 ap)
2319	3040			G								(top 6+59.8)

#1929 - 107-111 West 21st - 7-10-28
 #1315 - Tap - 2132 Wellington - 12-18-22 - Johnson Pkg. Co.
 #633 - Tap - 214 Park Place - 8-20-47 - R. LaFoy
 #1108 - Private Line - 2009 Park Place - 6-14-54 - Callison Pkg. Co. (Trailer)
 #1986 & 1997 - 2 Trailers - 2125 Park Place - 7-25-52 - R. LaFoy
 #6423 - Setting eye - 2117 Park Place - 9-14-58 - Callison Pkg. Co. (Trailer)
 #B3665 - Seal off - 2008 Wellington Place - K III Sealy - 6-25-65 (8+02.8)
 #118452 - 107 W. 21st N N/C 6/8/87 - (16+89.5 TAP)