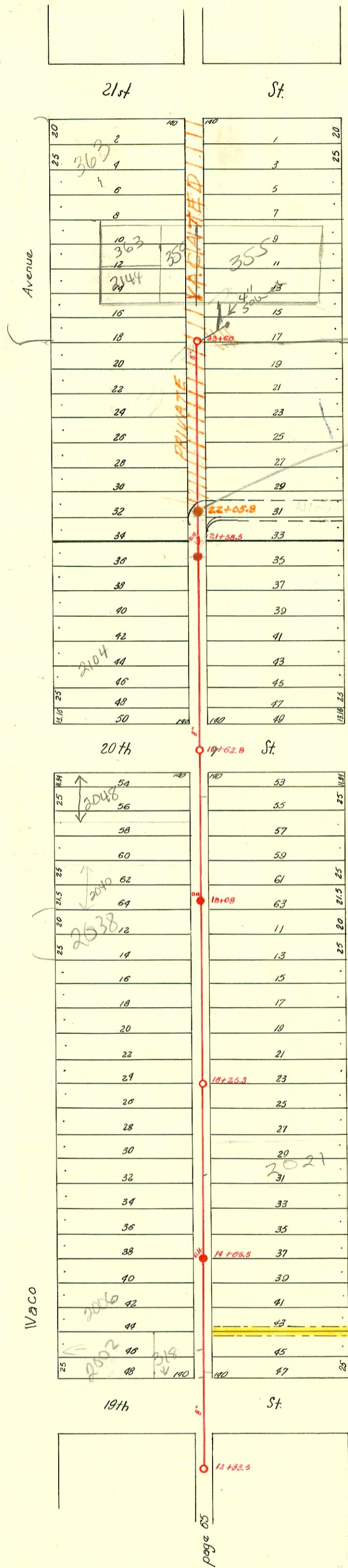


SEC. A - SUB-MAIN R - 1919
LAT. C OF R - 1918
S.S. NO. 20



This line is alive
NO MAINT
beyond 7th
22+05.8
5-1-79
JPB

Fairview (formerly Wichita)
Easement #815 - May 27, 1920 Between
Otto Zimmerman & City of Wichita, 5' on
either side of N. line of lot 45, Wichita St.,
Avondale Addition.

CONSTRUCTION RECORD						SERVICE RECORD						
STATION	ELEVATION		Depth	MANHOLE	4-INCH "Y" BRANCHES		No. of Permit		House Number		DATE OF PERMITS	
	Ground	Grade			North West	South East	North West	South East	North West	South East	North West	South East
12	120.72	116.20	4.52									
13	120.39	116.30	4.09	12+83.5	13+30 +55.8 +81.5	13+27.5 +53.3 +79.0	#434 #4578 #137		2002 Waco 2002 Waco	510 3/2 West 19	5-3-22 5-8-51 2-27-22	5-22-20
14	121.14	116.40	4.74	a.h. 14+65.5	14+06.5 +32.5 +58.2 +84.2	14+04 +30 +55.7 +81.7	#886 #809	2012 Waco	2011 Wichita		5-6-19	5-28-23
15	121.66	116.50	5.16		15+09.5 +35.5 +61.1 +87.0	15+07 +33 +58.6 +84.5	#740 #661 #871	#1829 #906	2036 Waco 2020 Waco	2019 Wichita ? ?	7-11-20 8-30-20	12-13-23 12-20-17
16	121.08	116.60	4.46	16+25.3	16+10.5 +36.5 +61.9 +87.6	16+08 +34 +59.4 +85.1	#16 #220	#1223 #15774 #1807	2030 Waco 2039 Waco	2023 Wichita 2020 Wichita	1-10-28 3-10-28	4-29-19 9-15-19
17	121.35	116.70	4.65		17+13.5 +39 +64.2 +90.1	17+11 +36.5 +61.7 +87.6	#44	#390 #341 #46	2044 Waco		1-18-28	3-16-23 3-8-23
18	121.58	116.80	4.78	a.h. 18+08	18+15.3 +41.2 +66.9 +92.5	18+12.8 +38.7 +64.4 +90	#617	#1205	2040 Waco	2045 Wichita 2051 Wichita	7-18-21	1-25-24 9-5-19
19	121.19	116.90	4.29	19+62.8	19+13.5 +25.9	19+11 +93.4	#1009 #283 #13950 #628	#286 #1037	2048 Waco	2050 Wichita 2107 Wichita	10-24-21 6-1-20 4-6-22	4-6-22 4-27-23
20	121.81	117.00	4.81		20+21 +46.4 +62.5 +95.2	20+18.5 +43.9 +67 +92.7	#1119 #106	#433 #322	2102 Waco	2106 Waco 2107 Wichita 2109 Wichita	12-29-26	4-20-28 3-7-28 2-28-24
21	122.46	117.10	5.36	a.h. 21+58.5	21+20.7 +43.7 +69.3	21+18.2 +41.2 +66.8	#1097 #1350 #511	#868	2112 Waco 2116 Waco	2111 Wichita	12-13-27 12-29-28	8-19-18 10-13-27
22	122.44	117.20	5.24		22+17 +43 +68.8 +94	22+14.5 +40.5 +66.3 +91.5						
23	122.34	117.30	5.04	23+60	23+17 +40.5 +55.5	23+14.5 +39 +53						

B #4180 2006 N. Waco 9-23-81 Bratcher (M.H. 12+83.5)
 C15041 333 W. 21st 10-25-79 New Conn. (top 22+99.6)
 C68403 363 W. 21st 71. New Conn. 9-18-78 (used stub N.W. out of Sta. 23+60.0)
 C58720 - 333 W. 21st - Rly #3 - 11-17-76 (24+42.5) (22+46.8)
 C58721 - 333 W. 21st - Rly #3 - 11-17-76 (25+14.8) (23+18.8)
 S.O. - C47847 - 2150 N. Waco Jack Sharp - 12-18-77 (Stub in M.H. - 23+60)

93-50867-3-15-93 - 2021 N. Fairview - Pop - Hanning
 4" PVC40 - Replaced 24' section of line to point
 15' from main 14" pipe shallow