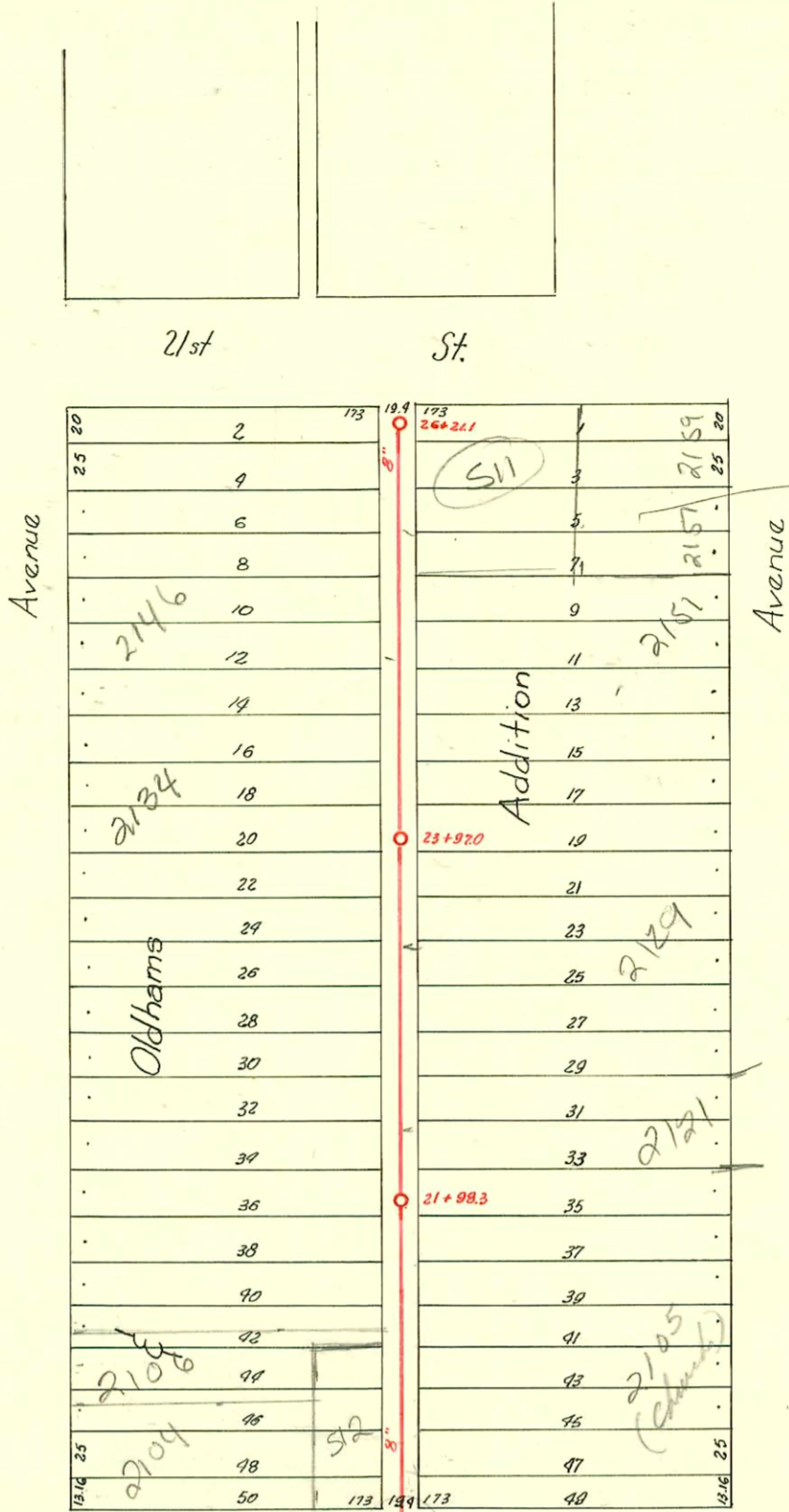
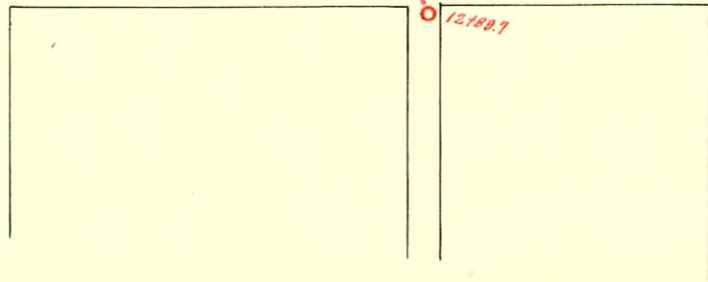
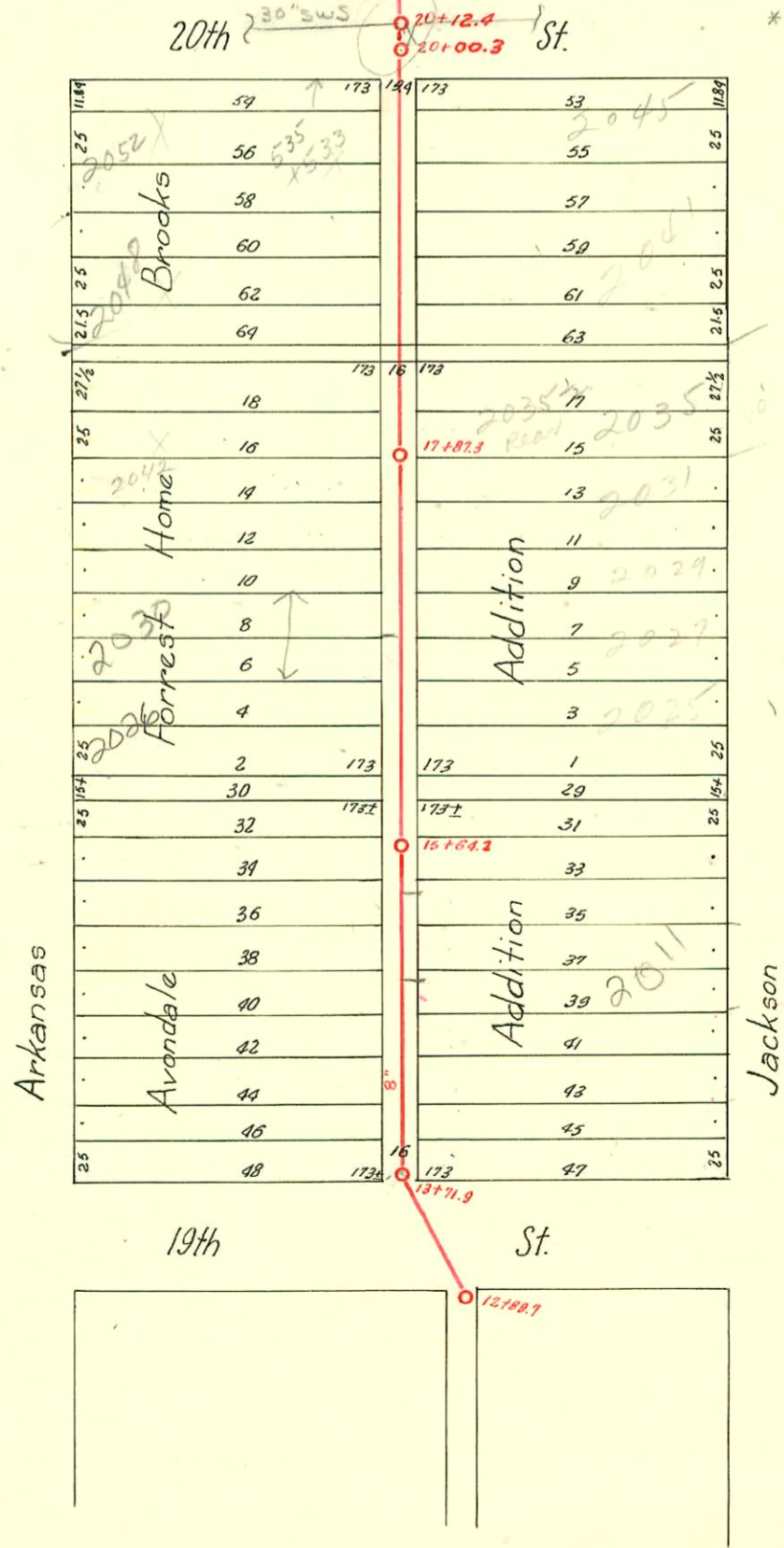


NOTE: 2003 JACKSON 9-22-86
Drainlayer says connection is 75' N of MH



11-29-07
Dye test shows
following connections:
2159 JACKSON -
TAP 1 FT S. of
MH 26+21
2157 JACKSON -
CONN. AT 47 FT
S. of MH
S11 2157
CONN. AT 50 FT
S. of MH
2151 JACKSON
CONN. AT 57 FT
S. of MH
SEE MAIL
L-1144

* NOTE 8" SS goes through storm sewer MH in CIP
~ 1 ft above invert.



CONSTRUCTION RECORD

SERVICE RECORD

STATION	ELEVATION		Depth	MANHOLE	4-INCH "Y" BRANCHES		No. of Permit		House Number		DATE OF PERMITS		
	Ground	Grade			North West	South East	North West	South East	North West	South East	North West	South East	
13+00	122.66	114.43	8.23	13+71.9	13+82.4	13+79.9		#1698		2001 Jackson		12-4-29	
14+00	122.79	114.60	8.19		14+08.0	14+05.5		#468 #469 #485		530 West 19 2004 Arkansas	2003 Jackson 2017 Jackson	6-5-20 6-10-20	9-22-86 9-14-23
15+00	123.29	114.75	8.54		+32.5 +57.5 +82.0	+30.0 +55.0 14+79.5		#17009 #355 #4598		2010 Arkansas 2016 Arkansas	2014 Jackson	7-18-24 10-27-22	
				15+64.2	+56.5 +82.0	+54.0 15+79.5		#1657 #1431 #1443-Tap #1057		2020 Arkansas 2015 Jackson		9-28-23 12-1-27	
16+00	123.14	114.90	8.24		16+06.8 4" SCH 40 CD +31.2 +56.2 +81.2	16+04.3 +28.7 +53.7 +78.7		#507 #1090 #1124	#1923	2026 R.R. Arkansas	2025 Jackson	2-1-02 4-27-04 3-18-24	9-26-23
17+00	122.84	115.05	7.79		17+05.7 +30.6 +56.1 +80.3	17+03.2 +28.1 +53.6 +77.8		#1638 #729 #246	#872	2020 Jackson 2034 Arkansas 2042 Arkansas	2031 Jackson	8-30-27 5-20-49	10-18-23 10-14-27
18+00	121.92	115.20	6.22	17+87.3	18+05.5 +30.6 +55.2 +80.8	18+03.0 +21.1 +52.7 +78.3		#2437 #2438	#578	2035 Jackson 2035 Jackson	2033 Jackson	8-4-61 10-29-24	10-29-24
19+00	121.25	115.35	5.90		19+06.0 +30.9 +55.9	19+03.5 +28.4 +53.4		#903 #1533	#1104	533 West 20 2052 Arkansas	2045 Jackson	5-9-50 10-18-23	12-5-62 5-14-24
20+00	122.55	115.50	7.05	20+12.9	20+39.1 +64.0 20+90.2	20+36.6 20+61.5 +86.7		#7567 #75756	#1029	2105 N Jackson 2104 Jackson 2102 Arkansas	2105 R Jackson	12-11-77 12-16-79	9-10-73 11-20-39 2-1-89 2-16-74
21+00	121.95	115.65	6.30		21+14.3 +56.7 +80.3	21+11.8 +36.8 +62.1 +86.8		#1875 #2574 #152		2106 Arkansas 2112 Arkansas 2114 Arkansas		12-8-23 5-25-42 9-20-24	
22+00	120.80	115.80	5.00	21+98.3	22+14.3 +39.0 +63.9 +89.1	22+11.8 +36.5 +61.9 +86.6		#6160 #637 #1025 #1430		2117 Jackson 2121 Jackson 2125 Jackson		6-11-25 9-17-25 6-18-24	
23+00	120.20	115.95	4.25		23+19.1 +39.2 +64.1 +88.9*	23+11.6 23+36.7 +61.6 +86.4		#1698 #1639	#1381	2122 Arkansas 2130 Arkansas	2129 Jackson	11-17-23 11-8-23	6-12-24
24+00	120.14	116.10	4.04	23+97.0	24+13.8 +38.9 +63.8 +88.7	24+11.3 24+36.4 +61.3 +86.2		#2564 #485 #632	#603	2144 Arkansas 2144 Arkansas 2146 Arkansas	2137 Jackson	11-18-24 9-12-28 6-10-25	12-17-79 5-21-24 3-1-82 12-1-91
25+00	120.64	116.25	4.39		25+13.6 +38.7 +63.6 +88.5	25+11.1 +36.2 +61.7 +86.0		#2858 #133	#829	2151 Jackson 521 West 21st	2151 West 21st	10-9-42 3-8-29	7-27-25
26+00	120.94	116.40	4.54	26+21.1	26+11.5			#595 #1255		517 N 21st 519 West 21st		8-8-55 11-28-28	

#070 - Tap - 515 West 21st - 6-19-22 - with 6" line
 #671 - info above line - 517 West 21st - 6-14-22
 #1347 - Tap - 530 West 19th - 5-22-52 - R LaFoy
 #1514 - Tap - 2150 Jackson - 7-1-24
 #2310 - Tap - 517 West 21st - J.E. Lansdowne - 7-14-92
 #531 - Tap - 517 West 21st - Coleman - 8-3-98
 #3851 - Tap - 2132 Arkansas - 2-13-51 - Simmons
 #413 - Tap - 510 West 21st - 3-24-54 - Coleman Pkg

487 - Tap - 521 W 21st - Date - 6-26-57
 94-9911-7 6-24-94 (512 W 21st) - Henning - (656) N of South manhole (201780)?

#1946 - del off - 2142 Arkansas - used Thompson 1-17-66
 #75671 - (2104 Ark) - 12-18-79
 70 #0052 - 2041 Jackson - 6-4-80 Henning (510 at 18+77.3) (123.0 s of N)