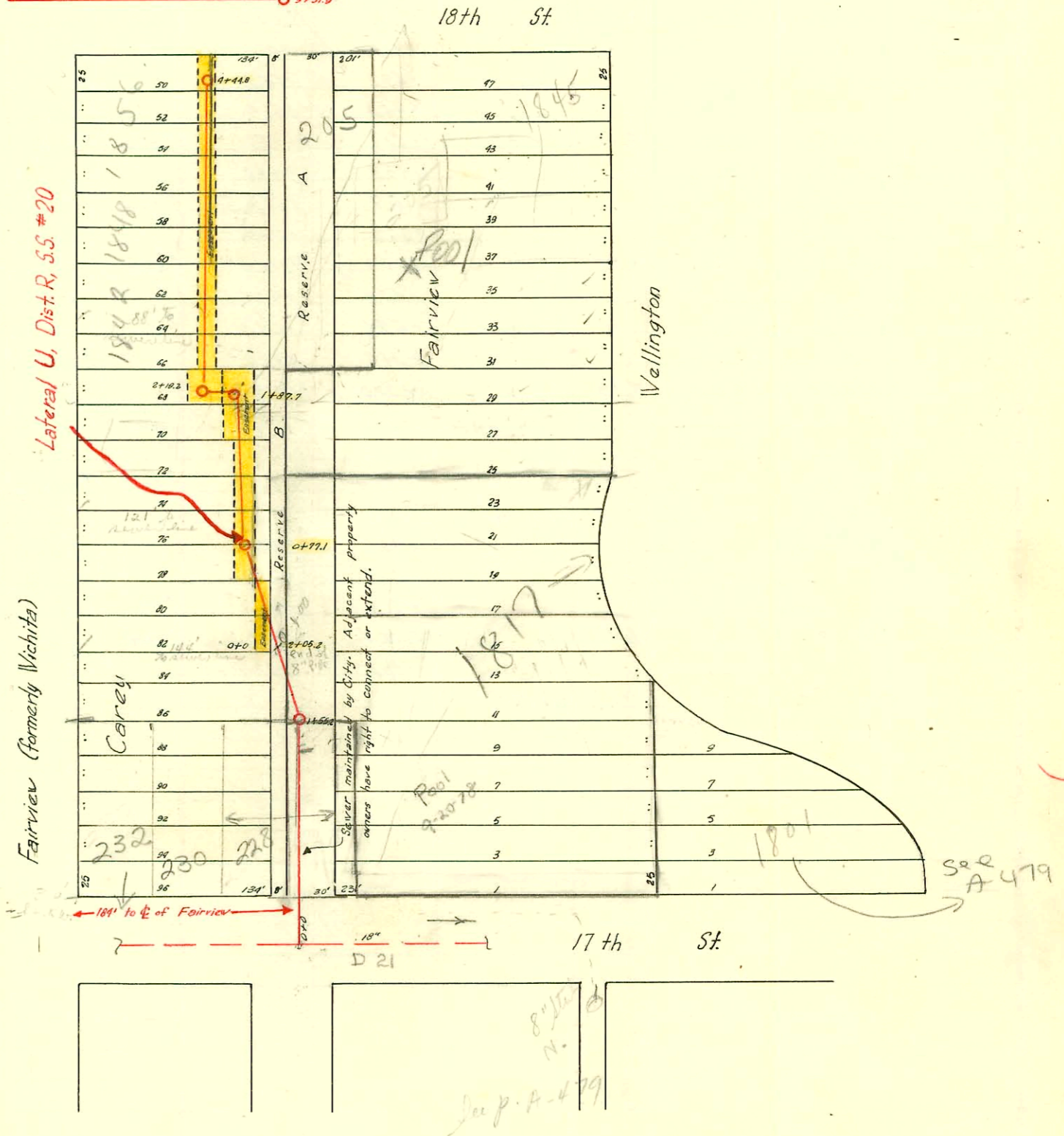
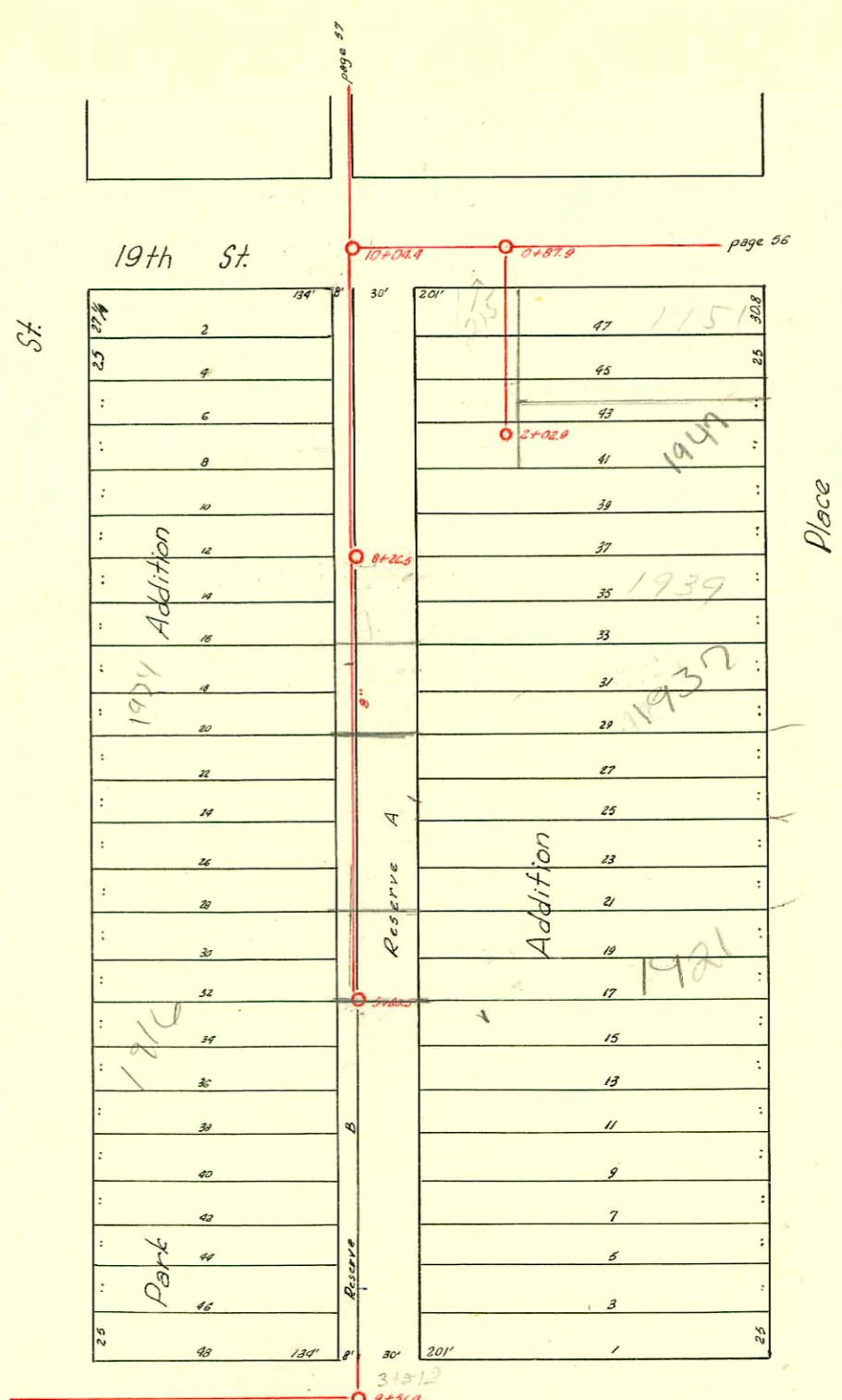


SEC. A-SUB-MAIN R-1919
LAT. D OF R-1918
S.S. NO. 20



8'11/2
N.
July A-479

D-64

CONSTRUCTION RECORD

SERVICE RECORD

STATION	ELEVATION		Depth	MANHOLE	4-INCH "Y" BRANCHES		No. of Permit		House Number		DATE OF PERMITS		
	Ground	Grade			North West	South East	North West	South East	North West	South East	North West	South East	
	Lateral North from 18th to 19th							#684	1806			9-9-20	
3			7.90	+51.9	+91.1	+88.6	#3115		1902			2-10-41	
4	129.73	115.99	8.74		+16.6	+14.1		#422	204	West 18th		7-12-18	
					+39.8	+37.3							
					+69.8	+62.3	#794		1906	Wichita		4-11-29	
					+90.8	+88.3							
5	124.51	116.10	8.41		+16.3	+13.8							
					+41.8	+59.3							
					+67.8	+65.3	#1798		1916	Wichita		8-6-29	
			7.61	+80.5	+93.3	+90.8		#2229	1819	Wellington		10-2-29	
6	129.26	116.20	8.06		+15.8	+13.3	#1731	#894	1920	Wichita	Wellington	7-28-24	
					+41.8	+39.3	#322		1924	Wichita		4-15-22	
					+67.3	+64.8		#1291	1923	Wellington		9-16-29	
					+93.0	+90.5							
7	123.52	116.30	7.22		+15.8	+13.3	#8	#733	1932	Wichita	1933	Wellington	1-7-20
					+41.3	+38.8							8-25-26
					+67.3	+64.8	#38	#73	1934	Wichita	1937	Wellington	1-23-23
					+81.5 Top		#869		1938	Wichita			3-23-26
					+93.3	+90.8							12-3-20
8	123.36	116.40	6.96		+18.3	+15.8	C43214	#1339	1939	Wellington			9-20-29
			6.50	+26.5	+40.8	+38.3	#933	#29	1945	Fairview	Wellington		1-29-74
					+66.8	+64.3	#737		1954	Wichita			11-14-46
					+92.3	+89.8	#1120		1958	Wichita			4-8-26
9	122.80	116.50	6.30		+18.3	+15.8							10-8-25
					+43.8	+41.3	#971		1960	Wichita			4-30-29
					+68.8	+66.3							
10	121.24	116.60	4.59	+04.4									
	Short lateral South of 19th Street												
0			5.3	+87.9									
1	122.09	116.72			+16.1	+13.6							
						+40.0		#1029	1951	Wellington			7-25-19
						+63.4		#214	1997	Water	Wellington		5-6-96
						186.3							3-26-20
2	123.01	116.83	6.18	+02.9-O.H.									
0+0		118.00		0+0	4" SCH 40	0+47.2	99-012875-01		228	R see below			6-16-99
1+0		118.30			0+73.2	1+36.2	#193		West 17th				7-3-35
2+0.52		118.62					#17	#794	1872	Fairview			8-26-58
					1+55.2	1+51.2							
					end of 8" Pipe	2+05.2							
0+0	126.30	118.60	7.70	0+00-Box at pipe at sta 2+05.2	0+10.4	0+07.4							
					0+32.3	0+29.3	#1229		1820	Fairview			3-20-42
					0+57.6	0+54.6							
					0+77.1								
1+0	125.80	118.85	6.95		0+87.5	0+84.5	#3756		1824	Fairview			6-30-41
					1+14.4	1+11.4							
					1+39.1	1+36.1	#3492		1830	Fairview			5-16-41
					1+60.2	1+57.2							
2+0		119.00 in 118.93 out		1+87.7		1+84.7		6814 5554	1845	R well draft			10-19-82
						2+10.0		#3493	1850	Fairview			4-7-82
		118.10 in 118.06 out		2+19.2									5-16-41
					2+40.0	2+37.0							
					2+64.0	2+61.0	#3494		1842	Fairview			5-16-41
					2+92.2	2+89.2							
3+0	126.00	119.18	6.82		3+16.3	3+13.3							
					3+43.4	3+40.4	#264		1848	Fairview			10-3-41
					3+67.5	3+64.5							
					3+91.8	3+88.8	#123		1856	Fairview			9-19-41
4+0	125.00	119.28	5.72		4+13.6	4+10.6							
					4+40.3	4+37.3							
	124.40	119.33	5.07	4+44.8									

Private line built by L.W. Clapp Must use 6" reducer & to be trapped 12-14-31

Depth of Sewer 6'

Built April 1941

99-012875-07-01-616179-228 with N-Hoop Pigs 4" SCH 40 4" Predeo 75' N of MH 0+00 3V45, 1H45, 2TWIN CO, 2 Fernco

#1452 - Tap - 219 West 18th - 4-12-39 - Kansas Pkg. Co.
 #2927 - Tap - 211 West 18th - 6-17-40 - C.C. McLaughlin (Tapped at 0+98.4)
 #712 - Tap - 201 West 18th - 9-25-46 - Moore-Robertson
 #2102 - Tap - 1801 Wellington - 4-20-48 - Pray Bros. (Tapped into sewer in alley E. of Wellington) referred A-479
 5769 Tap - 205-07E W 18th St Today 12-21-57 (tap on 10" poly 3rd m. w. n. of 17th) from sewer wgs Rep ck
 16058 Tap - 215 W. 19th - Vaughn P. Bly. 8-21-62 (1+21.9)
 B1338 TAP - 1803 N. Fairview - McLaughlin 6-2-54