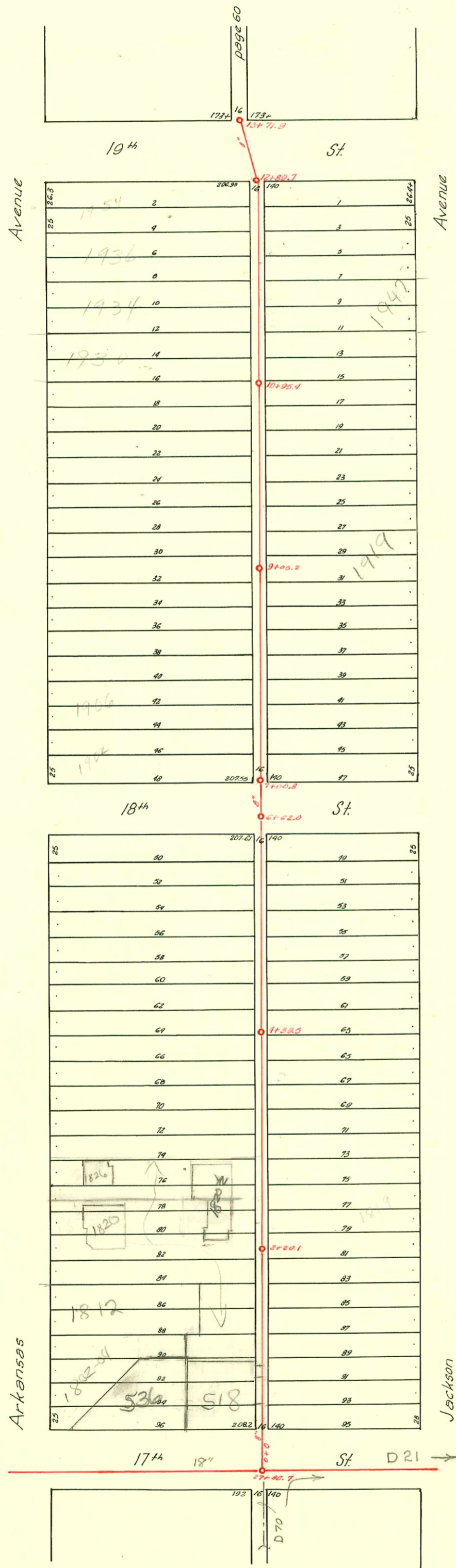


SEC. A - DIST. 2 - 1919  
LAT. A - DIST. 2 - 1919  
S.S. NO. 20



D-67

CONSTRUCTION RECORD

SERVICE RECORD

STATION	ELEVATION		Depth	MANHOLE	4-INCH "Y" BRANCHES		No. of Permit		House Number		DATE OF PERMITS			
	Ground	Grade			North West	South East	North West	South East	North West	South East	North West	South East	North West	South East
0+0	119.93	112.50	7.43		0+43.8 +68.5 +93.6	0+41.3 +66.0 +91.1	#1861 #16954	#590 #725	518 West 17th 532-534 21-17th	1803-1 Jacksons	10-4-49 4-62-63	#22-82 0-23-20		
1+00	121.83	112.65	9.18		1+19.0 +93.6 +68.7	1+16.5 +91.1 +66.2	#1567 #805	#95	1812 Arkansas	1815	7-7-24	2-24-21 7-10-22		
2+00	121.03	112.80	8.23	2+201	2+16.6 +93.8 +91.3 2+14.1	2+14.1 +91.3 +66.6 +91.6	#3161 #3161	#962	1820 Front Arkansas	1819 1819	9-7-00 1-27-50	8-7-22		
3+00	121.03	112.95	8.08		3+10.3 +44.5 +69.7 +94.1	3+16.8 +42.0 +67.2 +91.6	#2216 #1195 #385	#1195	1820 1/2 Arkansas	1819 1819	8-16-45 3-9-00 3-9-00	9-15-22		
4+00	121.00	113.10	7.90	4+39.5	4+19.7 +47.0 +72.2 +97.4	4+17.2 +44.5 +67.2 +92.3	#420 #1539 #796 #886	#5624	1830 Arkansas	1827 1831 1830	4-27-25 7-7-22	10-18-23 7-7-22		
5+00	121.35	113.25	8.10		5+19.7 +44.8 +70.0 +95.2	5+17.2 +42.3 +67.5 +92.7	#452 #478 #461	#755	1838 Arkansas	1837 1830	5-1-25 5-6-25	6-29-22 2-6-23		
6+00	121.13	113.40	7.73		6+20.1 +42.0	6+17.6	#494	#707 #1519	530 West 18th	1903 1901	6-12-20	9-18-20 10-16-23		
7+00	121.12	113.55	7.57	7+00.8	7+07.6 +33.8 +58.7 +83.5	7+05.1 +31.3 +56.2 +81.0	#1488 #1537 #9378	#653	1905 Jackson	1901 1910	10-8-23 10-18-23			
8+00	121.92	113.70	7.72		8+05.5 +31.0 +55.9 +88.3	8+03.0 +28.5 +53.4 +85.8	#1066 #1067 #673	#1066 #1067 #673	1910 Jackson	1924 1925 1930	5-21-22 4-23-20	9-28-25 5-4-23		
9+00	122.02	113.85	8.17	9+05.2	9+31.1 +56.0 +81.2	9+28.6 +53.5 +78.7	#1792 #979	#1357	1926 Arkansas	1923 1938	8-22-39 10-29-30	10-22-23		
10+00	121.22	114.00	7.22		10+06.5 +31.5 +56.8 +81.8	10+04.0 +29.0 +54.3 +79.3	#1792 #979	#1357	1926 Arkansas	1923 1938	8-22-39 10-29-30	10-22-23		
11+00	121.04	114.15	6.89	10+954	11+06.5 +31.6 +56.5 +81.6	11+04.0 +29.1 +54.0 +79.1	#3123 #151 #15324	#151	1930 Arkansas	1947 1941	4-21-64 3-20-62	11-20-99 3-6-22		
12+00	121.74	114.30	7.44	12+89.7	12+06.5 +31.0 +55.7 +80.7	12+04.0 +28.5 +53.2 +78.2	#575 #1421 #289 #736	#1421 #289 #736	1936 Arkansas	1951 1953	6-21-20 9-26-23 1-2-30	5-15-23		

2000-00611-3/100-1820 N Arkansas (Front house) - B+L Exc- 4" sch 40 - Tied to clay tile, 6' from main - 1 H 22

Rep  
2000-00632-1826 N Arkansas - R- B+L Exc - Exist Service Line Rerouted around add to 1820 1/2  
to Arkansas and tied back to wye 75' N of MH 4" sch 40 PUC 1 TWIN CO.  
1-22 H 2-22 H 1-45 H 1-45 H

#547 - Tap - 1891 Jackson - 5-29-30 - C. Frank McCoy  
#150 - Tap - 502 West - 4-12-37 - J.E. Lansdowne (used old connection) 5-30-47  
#16953 - Tap - 1802-1804 N Arkansas - 4-12-63 - Uni-State Service Inc (1+08.1)  
#16954 - Tap - 532-534 W. 17th - 4-12-63 - Uni-State Service Inc (1+02.1)  
93-19547-7 7-21-93 1947 N Jackson - Lubbers - 91' N of MH (11+86.4) 1" clay