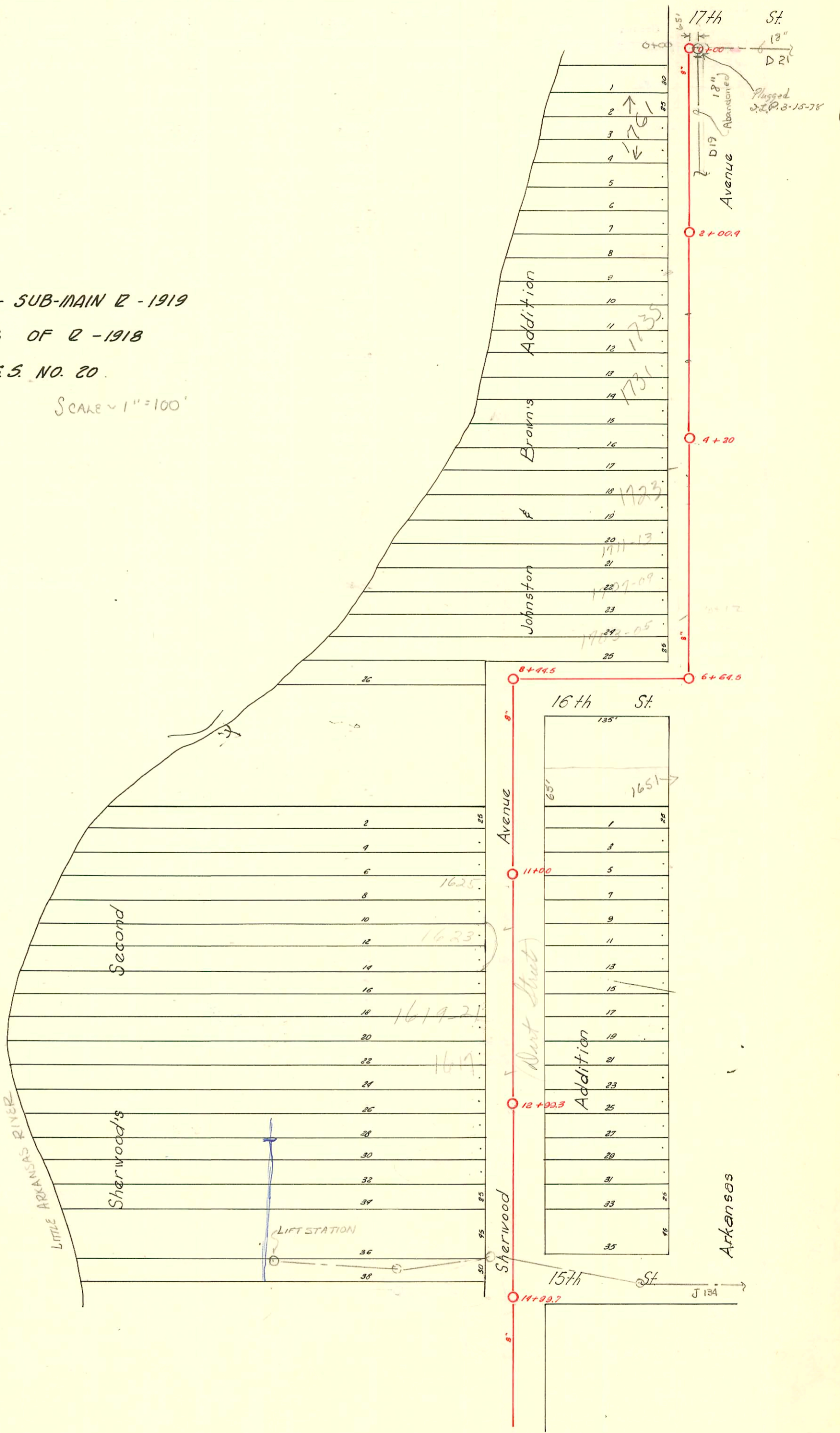


SEC. A - SUB-MAIN 12 - 1919

LAT. G OF 12 - 1918

S.S. NO. 20

SCALE = 1" = 100'



D-71

CONSTRUCTION RECORD						SERVICE RECORD						
STATION	ELEVATION		Depth	MANHOLE	4-INCH "Y" BRANCHES		No. of Permit		House Number		DATE OF PERMITS	
	Ground	Grade			North West	South East	North West	South East	North West	South East	North West	South East
0	119.72	112.50	7.22		+26.7		#1656		1761 R Arkansas		9-10-02 7-13-29	
					+49.5							
					+75.5							
					+99.2		#1689		1757 Arkansas		7-21-50	
1	119.29	112.60	6.69		+22.6		#382		1767 Arkansas		10-15-41	
					+45.8							
					+62.7		#1070		1735 Arkansas		8-15-29	
				1	+92.7			#1769	1749 Arkansas		8-2-24	
2	118.74	112.70	6.04		+16.9							
			6.5	2+100.4	+40.3		#1348		1735 Arkansas		2-14-39	
					+63.4							
					+86.7		#2629		1731 Arkansas		7-26-40	
3	119.19	112.80	6.39		+10.2							
					+33.5							
					+57.0							
					+80.0		#1160		1725 Arkansas		5-20-24	
4	118.92	112.90	6.02		+04.1							
			6.17	4+20	+26.8							
					+47.0							
					+70.5		10158		1723 Arkansas		4-23-59	
					+94.6		053159		1711-13 Arkansas		1-14-76	
5	118.97	113.00	5.97		+17.5							
					+41.0							
					+65.0		053157		1727-07 Arkansas		1-14-76	
					+89.0							
6	119.17	113.10	6.07		+21.5		053156		1723-05 Arkansas		1-14-76	
			6.3	6+61.5	+2.0							
7	119.72	113.20	6.52					#716				8-11-21
8	118.87	113.30	5.57									
			6.25	8+44.5	+97.7							
9	119.87	113.40	6.47			9+00.2		#358		1623 Arkansas		3-26-30
					+23.5	+26.0						
					+49.4	+51.9						
					+72.9	+78.4	#1994	#220	1621 Sherwood	1623 Arkansas	9-14-54	12-23-41
10	120.99	113.50	7.49		+01.4	+03.9	#1007		1625 Sherwood		7-25-30	
					+27.4	+29.9	#6788		1645 Sherwood		10-28-53	
					+53.6	+56.1	#2928		1627 Sherwood		10-27-29	
					+79.7	+82.2		#514	1624 Sherwood		5-15-25	
11	119.78	113.60	6.18 5.9	11+00	+05.9	+08.4	#14759		1625 Sherwood		10-2-61	
					+31.6	+34.1						
					+57.5	+60.0	#614	#311	1623 Sherwood	1620 Sherwood	6-5-25	4-26-27
					+83.0	+85.5	#963	#865	1626 Arkansas		9-20-21	
12	120.52	113.70	6.82		+08.5	+12.0	81517		1624 Sherwood		6-15-64	
					+34.8	+37.3	#205		1627 Sherwood		11-5-25	
					+61.7	+64.2	16769		1617 Sherwood		7-31-26	
			6.60	12+99.3	+83.8	+86.3	#369	#187	1627 Sherwood	1625 Arkansas	4-13-25	3-2-28
13	120.33	113.80	6.53		+15.4	+17.9						
					+41.6	+44.1		#725	1609 (1615) Arkansas		8-29-27	
					+67.1	+69.6	022639	#4376	514 West 15th		4-16-51	
					+93.6	+96.1	2599	#492	507 West 15th		1-21-71	
14	120.00	113.90	6.10		+19.4	+21.9					11-25-24	5-8-28
			5.80	14+98.7	+45.4	+47.9	#324		1601 Sherwood		4-21-26	

#854-Tap-1627 Arkansas - 5-10-38-HP Dunaway
 #3786-Tap-at 1+62.5-1745 Arkansas - 7-7-41-Kansas P/bg. Co.
 #6611-Tap-1626-Sherwood-10-2-53-Coleman P/bg. Co.