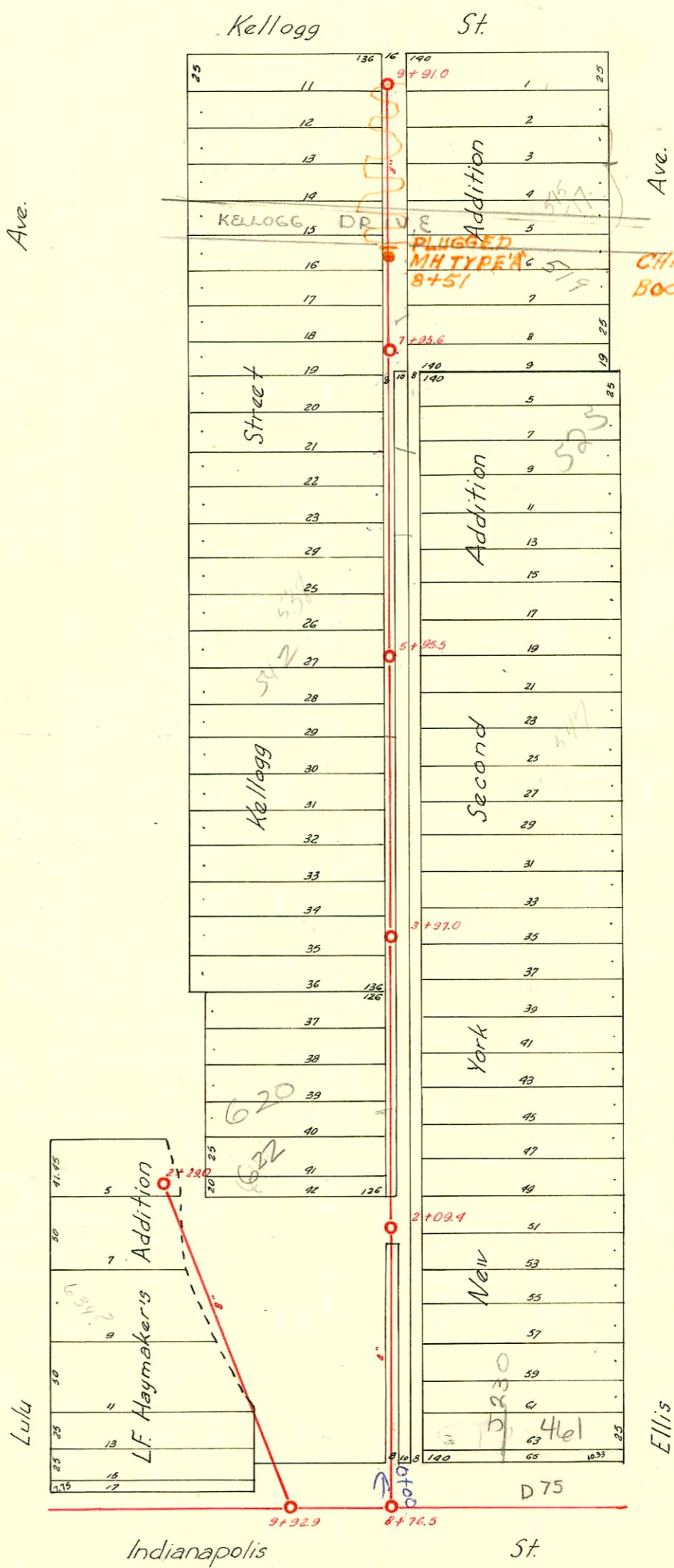


DIST. H - S.S. NO. 20 - 1919



CONSTRUCTION RECORD						SERVICE RECORD						
STATION	ELEVATION		Depth	MANHOLE	4-INCH "Y" BRANCHES		No. of Permit		House Number		DATE OF PERMITS	
	Ground	Grade			North West	South East	North West	South East	North West	South East	North West	South East
				+290								
2	103.88	98.69	5.19		+230		#113		628 Lulu			3-1-21
					+97.0							
					+72.5							
					+46.6		#12366 1400		634 Lulu			10-22-24 10-23-22
					+22.0							
1	103.78	98.59	5.19		+97.0							
					+72.0							
					+47.0		#3110		650 Lulu			11-13-50
0+00	104.88	98.49	6.39		+21.0							
				Stub from Sta. 9+92.9								
				+91.0								
					+86.1	+83.6			504 Lulu			11-27-23
					+63.2	+60.7	#1751					
					+37.5	+35.0		#1758	503 Ellis			11-29-23
					+12.3	+8.8		C40650	515-17 Ellis			8-16-73
9	104.19	99.24	4.95		+85.5	+83.0	#132427 #301058		1409 E. Kellogg 510 Lulu			2-13-59 2-9-26
					+60.1	+57.6						6-12-22 12-11-22 12-8-72 10-25-22
					+34.8	+32.3						10-19-22
					+08.8	+06.3		#1375 #1823	510 Lulu	523-11 Ellis		7-26-63 11-1-23
8	103.69	99.14	4.55		+84.1	+81.6						8-11-24
				7+95.6	+58.5	+56.0						
					+32.5	+30.0	#9	#24	530 Lulu	526-11 Ellis		1-8-24 2-9-27
					7+17.6 7+0.5	+04.0		16412	534 Lulu			6-5-86
7	103.59	99.04	4.55		+81.5	+79.0	#998	#1975	534 Lulu	529 Ellis		4-25-24 8-30-24
					+56.8	+54.3						
					+31.3	+28.8						
					+07.0	+04.5	#2055	#623	536 Lulu	535 Ellis		9-10-24 12-2-37
6	103.23	98.94	4.29		+81.5	+79.0	#2032 #684		542 Lulu			2-2-88 7-2-24
				5+95.5	+55.8	+53.3		#248		547 Ellis		6-12-46
					+31.6	+29.1	#1894		546 Lulu			12-22-23
					+03.0	+00.5		#843		551 Ellis		8-9-28
5	103.08	98.84	4.24		+80.9	+78.4						
					+55.5	+53.0	#521	#976	605 Lulu	607 Ellis		3-21-24 9-11-28
					+29.9	+27.4	#628		606 Lulu			6-6-22
					+04.3	+01.8		#1532		609 Ellis		7-2-24
4	103.18	98.74	4.44		+79.1		#486		608 Lulu			5-11-22
				3+97.0	+53.0	+50.5						
					+26.3	+23.8		#103		621 Ellis		3-4-29
					+01.0							
3	103.44	98.64	4.80		+78.0	+98.5	#485		620 Lulu			5-11-22
					+53.0	+75.5		#1211		615 Ellis		11-15-28
					+26.1	+50.5	#512	#806	620 Lulu	629 Ellis		3-19-24 9-23-27
				2+09.4	+01.4	+23.6						
2	103.72	98.54	5.18			+93.9		#219		627 Ellis		3-31-27
					+76.3	+73.8						
					+49.3	+46.8						
					+23.2	+20.7	#1213		624 Lulu			8-15-23
1	103.19	98.94	4.25		+97.5	+95.0						
					+72.2	+69.7	#1168		626 Lulu			5-21-24
					+46.3	+43.8		#1575		641 Ellis		7-9-24
0+00				0+00.0	+21.5	+19.0						

#263-609 Ellis-6-1-37-L.A. Creed (used for connection)  
 #21-492 E. Indianapolis-3-8-45-Burgan-Tap  
 #1123-146 E. Indianapolis-3-3-41-Burgan  
 #204-Tap-503 Lulu-11-8-46-Dawson-1126 Co.  
 #302-Tap-1436 E. Indianapolis-11-20-43-Millard Elgers  
 #367-Tap-1423 E. Kellogg-7-7-50-J. N. Hanna  
 #1676-Tap-633 Ellis-6-18-52-J. McDonald  
 #1673-Tap-1420 E. Indianapolis-6-18-52-J. McDonald  
 #3390-1401 E. Kellogg-Art Presser-8-15-55-1131/74 (8+24.6)

SP C43279 #1008 Tap-520 Lulu-4/4/50-Art Presser  
 SO C44573 7018 Tap-323 Ellis-11/5/59-8733.5-4-22-74-C.T. Rutledge (8+11.6)  
 C38405-Deal off-1431 E. Kellogg-at Henning 4-19-73 (9+39.8)  
 R #14602 550 Lulu De Hoff-8-29-15 (4+5.8) no legal for lat. available