

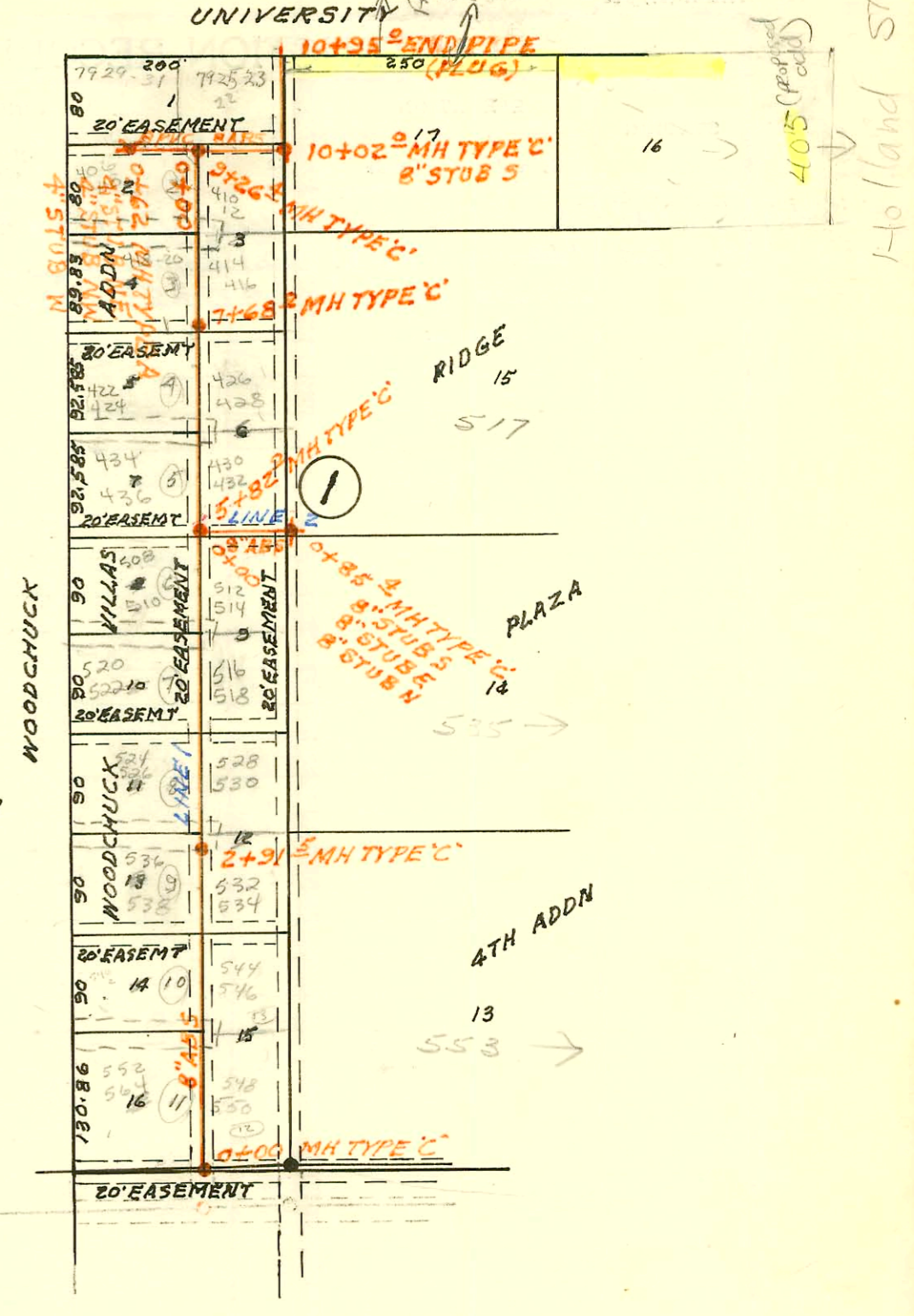
N. 10' 13'
PRIVATE LUG
FIRM 0879
PK 0810
PK 0810
4 8' 8 1/2'

SCALE 1"=150'

Plat
5-57

WOODCHUCK VILLAS SEWER
BUILT BY: W.B. CARTER CONST. CO.
PROJ. N^o 468-76-245-80524-000-000-008
BOOKED 4-14-79 FROM AR 83

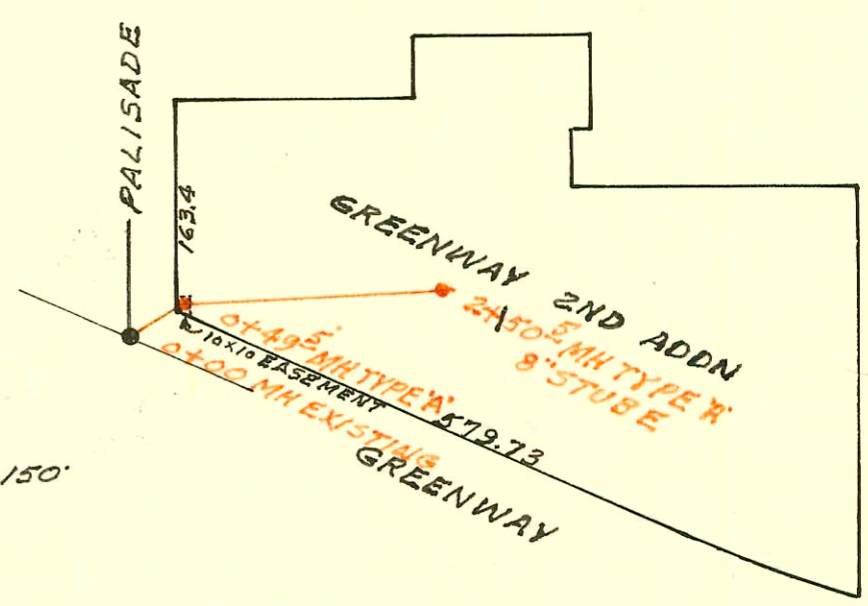
SAN SEWER FOR LOT 1 WOODCHUCK VILLAS 2ND ADDN
BUILT BY: UTILITY CONTR. INC.
PROJ. N^o 468-76-245-80000-000-000-008
BOOKED 6-1-83 FROM JLA 31
DATA ON D87



LOT 1 GREENWAY 2ND ADDN SAN SEWER
BUILT BY: MID STATES CONST. CO.
PROJ. N^o 468-76-245-80497-000-000-008
BOOKED 4-14-79 FROM IH 92
ALSO PROJ. N^o 468-76-245-80655-000-000-008

on map

SCALE 1"=150'



A&W DRIVE INN-HYDRAULIC & 47TH ST
BUILT BY: W.B. CARTER CONST. CO.
PROJ. N^o DBKW 706006
BOOKED 4-17-79 FROM IH 184

on map
10-82

SCALE 1"=150'

