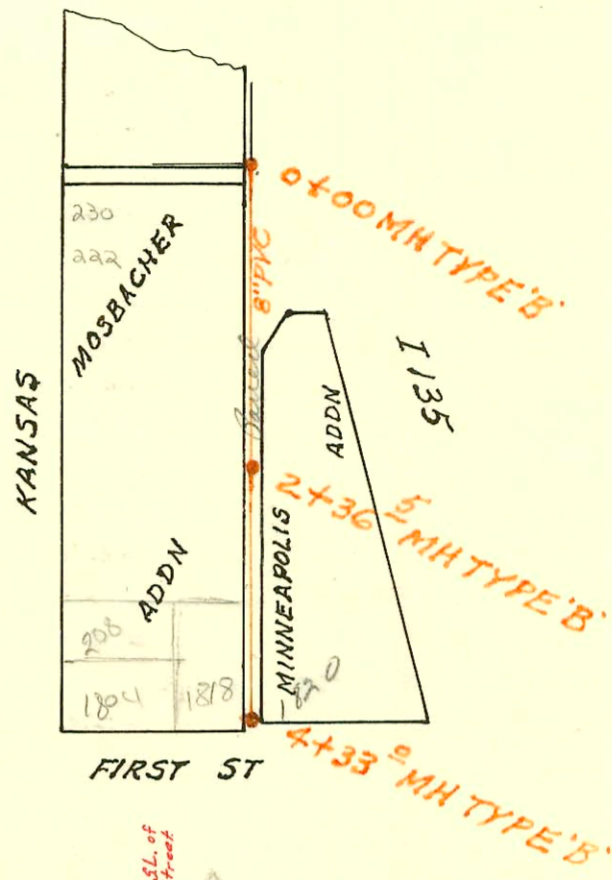
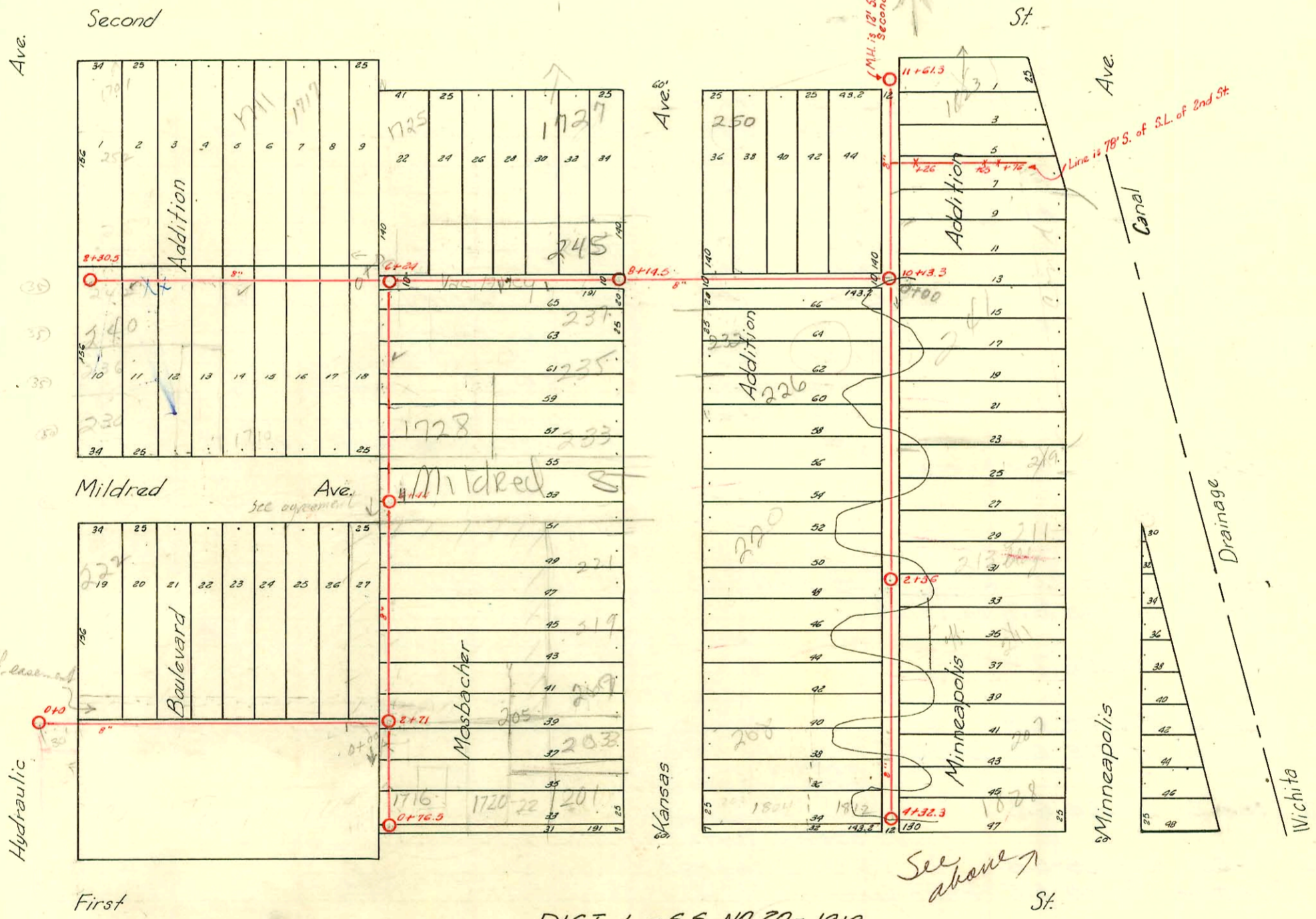


RECON PART OF DIST L SAN SEWER NO 20  
 ALLEY E OF KANSAS AVE 1ST TO 2ND  
 BUILT BY: MID STATES CONST. CO.  
 PROJ. NO 542-80-245-80031-000-000-001  
 BOOKED 3-27-81 FROM G7

on map



SCALE 1" = 150'



DIST. L - S.S. NO. 20 - 1919

- 01263 thru 01273 - 9/16/80
- Howard Ladd
- 16057 C70443 New Can 207 # (44) Kansas 3-5-79 - Fredrick (see letter) 26' W 63' E of MH 2+71.0 8" Depth Line (see 5/6 permit)
- 16058 C63003-1804 C 1st - 9-12-77 (3+73.3)
- 16059 Tap C72271-222 N. Kansas 6-8-79 (1+66.4)
- 92-50017 1728 E. Mildred (5+10.0) 5-27-92

D101

CONSTRUCTION RECORD

SERVICE RECORD

STATION	ELEVATION		Depth	MANHOLE	4-INCH "Y" BRANCHES		No. of Permit		House Number		DATE OF PERMITS	
	Ground	Grade			North West	South East	North West	South East	North West	South East	North West	South East
0+0	110.5 ±	100.11	10.39	0+0	+32.7	+30.2	#1751	#262	222 N. Hydraulic	200 N. Hyd.	1-31-86	8-13-74
					+59.2	+56.7						
					+88.1	+85.6						
1+00	107.88	100.26	7.62		+13.6	+11.1			1706 E. First			8-11-71
					+39.3	+36.8						2-7-24
					+70.8	+68.3			1710 E. First			11-16-23
					+92	+89.5						
2+00	107.88	100.96	7.92	+71	+16.9	+14.9	#1149	#39750	1717 Mildred	1712 S. 1st	11-13-68	6-27-73
					+12.5	+10	#2981	#2347	1717 1/2 Mildred	E. First	10-5-50	10-17-24
					+93.5	+96	#11413	#1707	1717 1/2 Mildred	E. First	11-13-68	12-2-66
												11-19-23
3+00	108.03	100.68	7.35		+22.8	+20.3			1723 Mildred	519 N. Kansas		3-5-79
					+46.5	+44						2-5-26
					+73.5	+71	#2917	#505	1723 Mildred	221 N. Kansas	4-8-46	11-13-68
					+98.5	+96						5-12-25
4+00	108.16	100.88	7.28	4+44	+25	+22.5			223 N. Kansas			5-20-25
					+50.9	+48.4						
					+75.5	+73						
					+99							
5+00	108.32	101.08	7.24		+01.5							
					+30	+27.5						
					+55	+52.5			227 N. Kansas			8-11-26
					+80.7	+78.2						
6+00	108.40	101.28	7.12	6+24	+07	+04.5			1715 E. Second		1-22-29	
					+49.5	+47	#32					
					+75.5	+73						
					+99.5							
7+00	108.81	101.61	7.20		+02							
					+43.0	+25	96910.7	#735	245 N. Kansas	237 235 N. Kansas	1-25-96	9-25-80
					+58.5	+56		#734	245 N. Kansas	241 N. Kansas		6-27-75
					+83.5	+81						7-11-28
8+00	107.95	101.82	6.13	8+14.5	+07.5	+05			246 N. Kansas		3-30-71	
					+89.5	+87	#23509	1108			12-27-26	
9+00	109.71	102.02	7.69		+16.5	+13			244 N. Kansas			5-22-29
					+40.5	+38						
10+00	108.99	102.22 ±	6.77	+13.3	+66	+63.5						
					+90.1	+87.6						
					+66.3	+63.8						
11+00	109.91	102.67	6.74	11+61.3	+89.8	+87.3			250 N. Kansas		6-17-86	
					+14.8	+12.3	16486	#729			8-7-30	
					+22.5	+20						
					+56.3	+53.8						
0+0	101.33 ±	101.33 ±	8.2	0+00	+25.5	+23			1717 E. Second		4-18-43	
					+53.8	+56.3	#111		1717 E. Second		3-9-31	
					+77.6	+80.1						
1+00	108.21	101.58	6.63		+09.5	+12	#401	#706	1711 E. Second	1710 Mildred	5-13-26	7-2-28
					+37.9	+40.4	#172				11-25-21	
					+62	+64.5	#1618				11-28-22	
					+89	+91.5	#200		237071 N. Hyd.	250 N. Hyd.	10-21-27	2-6-73
2+00	110.45	101.78	8.67	2+30.5	+08	+10.5	#17759		253 N. Hyd.		2-5-87	9-1-26
					+23.4	+25.9	#1026				10-25-27	
0+0	101.71	101.71	7.9	0+44	+23	+25.5			1716 E. 1st			8-6-69
					+49	+51.5						
0+0	101.33	101.33	7.2	0+00	+23.3	+25.8						
					+49	+51.5			230 N. Kansas	221 N. Minn.	6-27-76	2-1-27
					+72.9	+75.4			232 N. Kansas		8-21-78	
					+99				224 N. Kansas	217 N. Minn.	8-7-24	1-29-24
1+00	108.92	102.28	6.61		+25.0	+27.8			230 N. Kansas		3-22-74	
					+25.3	+27.8						
					+98.3	+100.8						
					+72.5	+75						
					+99				220 N. Kansas		10-3-89	1-10-23
2+00	109.10	102.48	6.62	2+36	+01.5		#1328		218 N. Kansas	21 N. Minn.	9-22-23	1-5-61
					+26.5	+29					9-6-87	4-29-22
					+56.7	+59.2			210 N. Kansas		7-19-23	1-10-23
					+80.8	+83.3						
3+00	109.48	102.68	6.80		+07	+09.5						
					+32	+34.5			228 N. Kansas	202 N. Kansas	9-26-23	7-9-21
					+39	+42						
					+89.6	+92.1						
					+87.1	+89.6						
4+00	108.64	102.88	5.76	4+32.3	+12.2	+12.2	#99		1812 E. First		5-16-46	
					+25.5	+28						

2+36.0  
1+99.0  
70

1720-22  
 4051-Set "Y" for 1720 E. First - 7-17-23  
 #148-Top-245 N. Kansas - 3-3-26  
 #245-Private Line-201 N. Kansas - 10-28-26  
 #790-Top-250 N. Kansas - 8-7-30 - H.P. Dunaway  
 #424-Top-209 N. Hydraulic - 9-12-37 - Albert J. Hoff  
 #1670-Top-1728 Mildred - 7-28-47 - Thompson Pkg. Co.  
 #394-Used Old Connection - 241 N. Minneapolis - 9-25-48 - Charles W. Burgen  
 #2634-Top-1721 Mildred - 10-9-50 - Frederick Pkg. Co.  
 #6001-Top-213 N. Minneapolis - 8-12-55 - Lafay, Jr.  
 85623 Seal off 236 N. Hydraulic - 6-21-65 (sealed at basement)  
 #21629 - 233 N. Kansas - 10-5-88 - Hanning (37' N. of RPL)  
 Seal off - C13085 - 241 N. Minneapolis - 3-10-69 (at 51.5') Frederick Pkg.  
 #18837 - 81607 (248 N. Hydraulic) - Hanning 510 - (1+92.5)