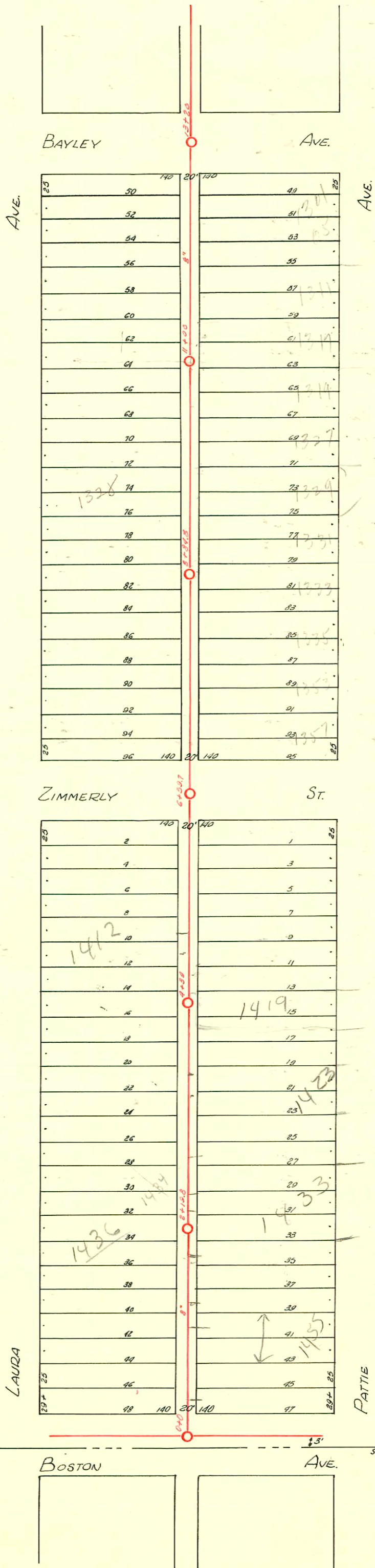


DIST. F - S.S. NO. 20 - 1920



D-104

CONSTRUCTION RECORD						SERVICE RECORD						
STATION	ELEVATION		Depth	MANHOLE	4-INCH "Y" BRANCHES		No. of Permit		House Number		DATE OF PERMITS	
	Ground	Grade			North West	South East	North West	South East	North West	South East	North West	South East
0+0	101.64 ±	96.20	5.44	0+0	+37.5	+35	# 328		1457	Pattie		5-11-26
					+62.5	+60	# 775		1444	Laura		7-13-25
					+87.5	+85	# 712		1442	Laura		4-7-24
1	102.97	96.40	6.57		+12.5	+10	# 95-1419-1	# 600	1438	Pattie		9-21-95 7-15-27
					+37.5	+35	# 1891	# 6201	1438	Pattie		8-19-24
					+69	+61.5	# 1107	# 363	1436	Pattie		3-6-23
					+90	+87.5			1437	Pattie		5-14-24
2	103.12	96.60	6.52	2+19.8	+16	+13.5	# 5485	# 196	1434	Pattie		7-9-98 3-25-82
					+41.5	+39	# 2960		1428	Laura		4-22-46
					+57	+54.5						
					+92.5	+90						
3	102.42	96.80	5.62		+18.5	+16	# 859		1426	Laura		4-17-24
					+44	+41.5						
					+70.5	+68	# 1221	# 687	1418	Pattie		9-17-96 8-4-21
					+96	+93.5						
4	102.45	97.00	5.45	4+39	+21.5	+19	# 642		1426	Laura		7-28-26
					+47	+44.5						
					+72.5	+70	# 293	# 203	1421	Pattie		12-5-35
					+99	+96.5	# 472	# 261	1412	Pattie		6-10-36
5	102.05	97.20	4.85		+24.5	+22						
					+19	+16.5	# 914	# 709	1406	Pattie		6-10-20
					+76	+73.5						
					+99.5	+97						
6	102.05	97.40	4.65	+59.7	+102	+19	# 104		1402	Laura		4-7-24
					+215	+96						
					+98.5							
7	102.73	97.60	5.13		+24	+21.5	# 752	# 2993	1354	Pattie		4-9-24
					+48.5	+46	# 536	# 2608	1346	Pattie		11-6-50
					+74.5	+72						
						+99.5	# 767		1335	Pattie		5-19-22
8	102.78	97.80	4.98	+84.8	+102	+24.5	# 1662	# 495	1344	Pattie		7-3-22
					+27	+50.5						
					+53	+77.5	# 666		1329	Pattie		11-13-23
					+80				1333	Pattie		6-12-20
9	103.63	98.00	5.63	8+84.8	+105	+102.5	# 1723	# 942	1330	Pattie		8-8-27
					+31.5	+29	# 1620	# 2045	1337	Pattie		12-18-22
					+58.5	+56	# 1619		1337	Pattie		8-3-22
					+84	+81.5						
10	104.90	98.20	6.70		+109.5	+107	# 706	# 464	1322	Pattie		7-14-24
					+35	+32.5	# 1334	# 464	1318	Pattie		8-3-22
					+62.5	+60						
					+88	+85.5						
11	105.20	98.40	6.80	11+100	+14	+11.5	# 1485	# 336	1306	Pattie		7-14-24
					+39.5	+29	# 1578	# 339	1314	Pattie		7-14-24
					+68.5	+66						
					+94	+91.5						
12	105.55	98.60	6.95		+20	+17.5	# 819	# 1120	1302	Pattie		6-20-24
					+45.5	+43						
					+80.5	+78						
13	105.70	98.80	6.90	13+20								

2000-00584-31613-14365 Laura - Overnight - 4" PK, 2" W/1" CO, 11" 22, 14" 45, Shallow, City Repair - dirt alley cut

1891 - Tap - 1322 Laura - 4-28-97 - Simmons Plbg. Co.
 # 1981 - Private Line - 1330 Laura - 10-12-99 - Plummer Plbg. Co.
 # 6382 - Trailer - 1306 Laura - 9-29-55 - Joe M. Donald Plbg. Co.

R-2000-02028-14335 Pattie 9/13/00 - JWC PLMB - 4" SCH 40, PRED CO, 14' N of MH 2+19.8 (3+63.8) Repl 10' on low end