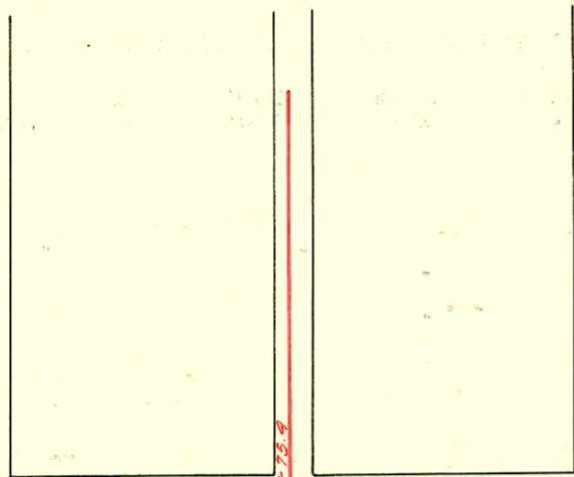
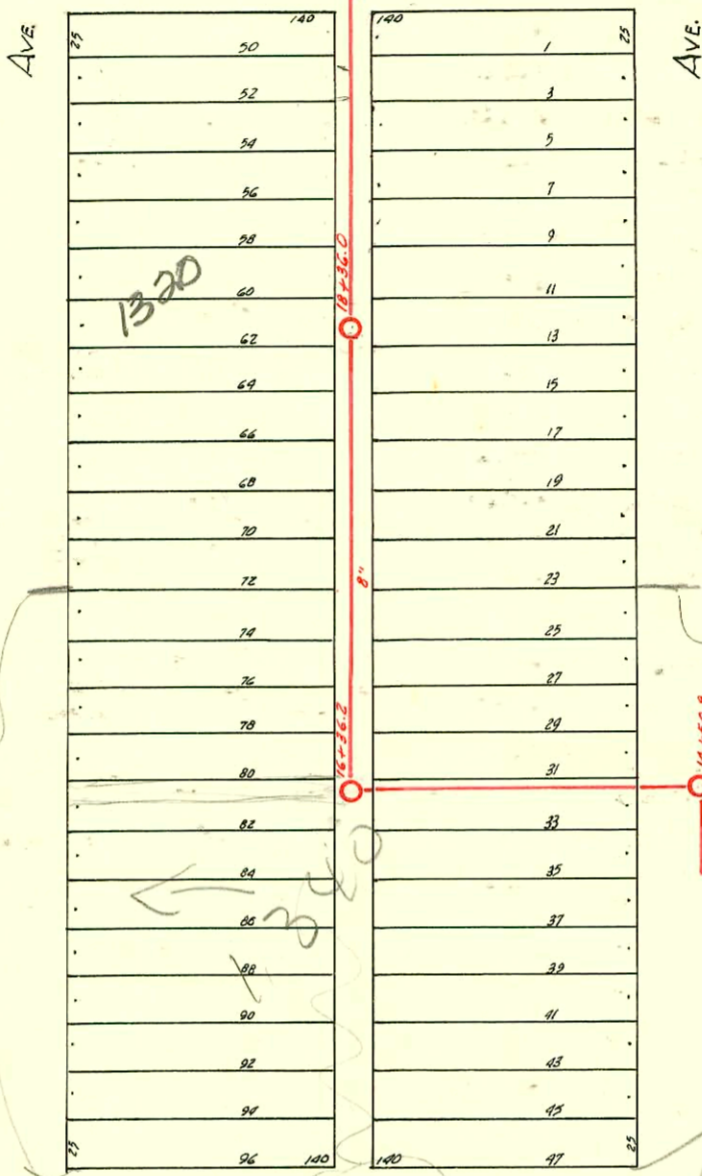


DIST. F- S.S. NO. 20-1980



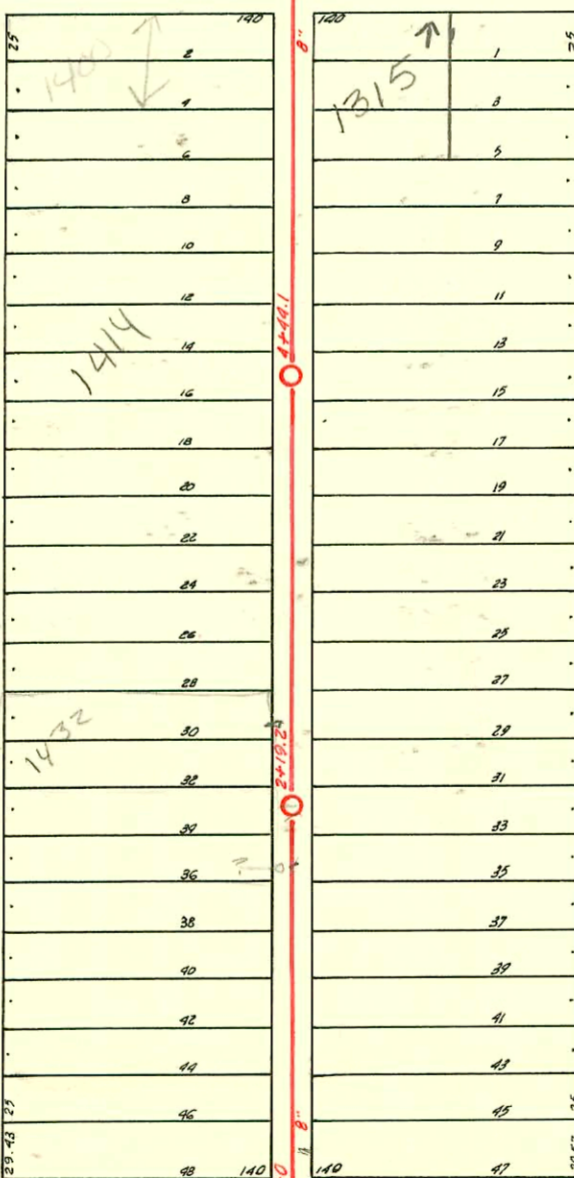
BAYLEY St.



School

need to trim that
MIT when school
is wrecked

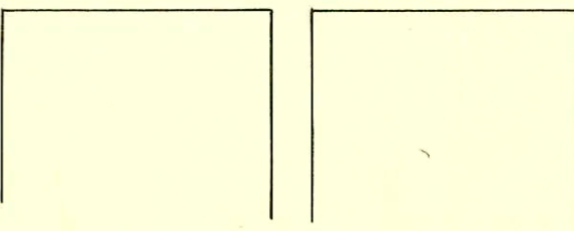
ZIMMERLY St.



PATTIE

LULLU

BOSTON St.



See Page 18

D-107

CONSTRUCTION RECORD							SERVICE RECORD					
STATION	ELEVATION		Depth	MANHOLE	4-INCH "Y" BRANCHES		No. of Permit		House Number		DATE OF PERMITS	
	Ground	Grade			North West	South East	North West	South East	North West	South East	North West	South East
0+0	101.79	95.83	5.96	0+0	+35.5	+33		# 1847		1456 Lulu		12-15-23
					+60.0	+57.5		# 455		Pattie		5-29-20
					+86.5	+84.0						
1	102.37	96.03	6.34		+12.5	+10.0	# 274	# 781	1454 Pattie	1415 Lulu	3-26-23	4-10-24
					+37.0	+34.5						
					+63.0	+60.5	# 725	# 39	1446 Pattie	1447 Lulu	4-7-24	5-16-27
					+88.5	+86.0	# 79	# 682	1442 Pattie	1441 Lulu	1-30-24	4-4-24
2	101.66	96.23	5.43	+19.2	+13	+10.5						
					+38	+35.5						
					+62.5	+60.0	# 1066	# 897	1432 Pattie	1429 Lulu	12-10-30	4-21-24
					+85.5	+83	# 62		1430 Pattie		2-2-27	
3	102.14	96.43	5.71		+11.5	+9						
					+36	+33.5						
					+61	+58.5	# 262	# 821		1421 Lulu	2-23-23	4-15-24
					+86	+83.5	# 162		1426 Pattie		1-29-23	
4	102.73	96.63	6.10	+44.1	+11	+8.5						
					+37	+34.5	# 203	# 824		1417 Lulu		4-15-24
					+62.5	+60	# 79	# 1212	1414 Pattie	1415 Lulu	3-13-23	11-6-25
					+88	+85.5			See Below			
5	102.53	96.83	5.70		+13.5	+11				1411 Lulu		3-31-24
					+38.5	+36	# 1510	# 52	1410 Pattie	1405 Lulu	7-1-24	1-28-24
					+64.5	+62	# 1190	# 375	1400 Pattie	1401 Lulu	2-29-23	4-14-25
					+90.5	+88						
6	102.58	97.03	5.55	+77	+16	+13.5						
14+00	102.72	98.24	4.48	+50.8								
15+00	103.64	98.94	5.20			+95.5						
16+00	103.64	98.54	5.00	+36.2		+27.5						
					+50.2	+47.7	# 149		1330 Pattie		6-28-22	
					+76.7	+74.2	# 473		1328 Pattie	1331 Lulu	10-28-75	3-13-24
17+00	104.12	98.84	5.28		+83.2	+80.7						
					+27.7	+25.2	# 787			1329 Lulu		4-11-24
					+54.7	+52.2						
					+80.7	+78.2	# 1173		# 1586 1326		10-27-23	9-11-22
18+00	105.55	99.04	6.51		+06.2	+03.7	# 65	7747		1317 Lulu	1-13-23	4-27-23
					+32.2	+29.7	# 788			1323 Lulu		10-28-75
					+58.7	+56.2	# 511	7947		1319 Lulu		4-11-24
					+84.2	+79.7	# 327		1320 Pattie		4-26-20	3-19-24
19+00	105.72	99.24	6.48		+10.2	+7.7	# 59			1314 Lulu		5-22-27
					+35.2	+32.7	# 935				10-5-21	
					+62.2	+59.7	# 1164		1308 Pattie		9-8-22	
					+82.2	+79.7						
20+00	105.52	99.44	6.08	+75.4	+08.7	+06.2	# 1272	# 42	1302 Pattie	1301 Lulu	9-12-29	2-9-25
					+31.2	+28.7						

2003-00914 4/7/03 1320 S Pattie - RD Campbell - 4" PVC - 10' old on each end - 40' new in middle

C57894 - 1340 Pattie - R. P. Rutledge - 2-14-76 - 2' x 14' manhole (16' x 63")

C34519 - 1340 Pattie - Bert Hamer portable school for Linwood - 8/25/72 (private line) 32' N.W. of 16+36.2

* C51 - Tap - 1312 E. Boston - 4-16-54 - Harry Moran
 # 998 - Tap - 1401 Lulu (Rear) - R.K. Lowhead - 9-14-28
 # 6523 - Tap - 1319 Lulu (Rear) - 11-23-51 - Ray McCoy
 # 6572 - Tap - 1426 Pattie (Trailer) - 11-23-51 - Kendall Pkg. Co.