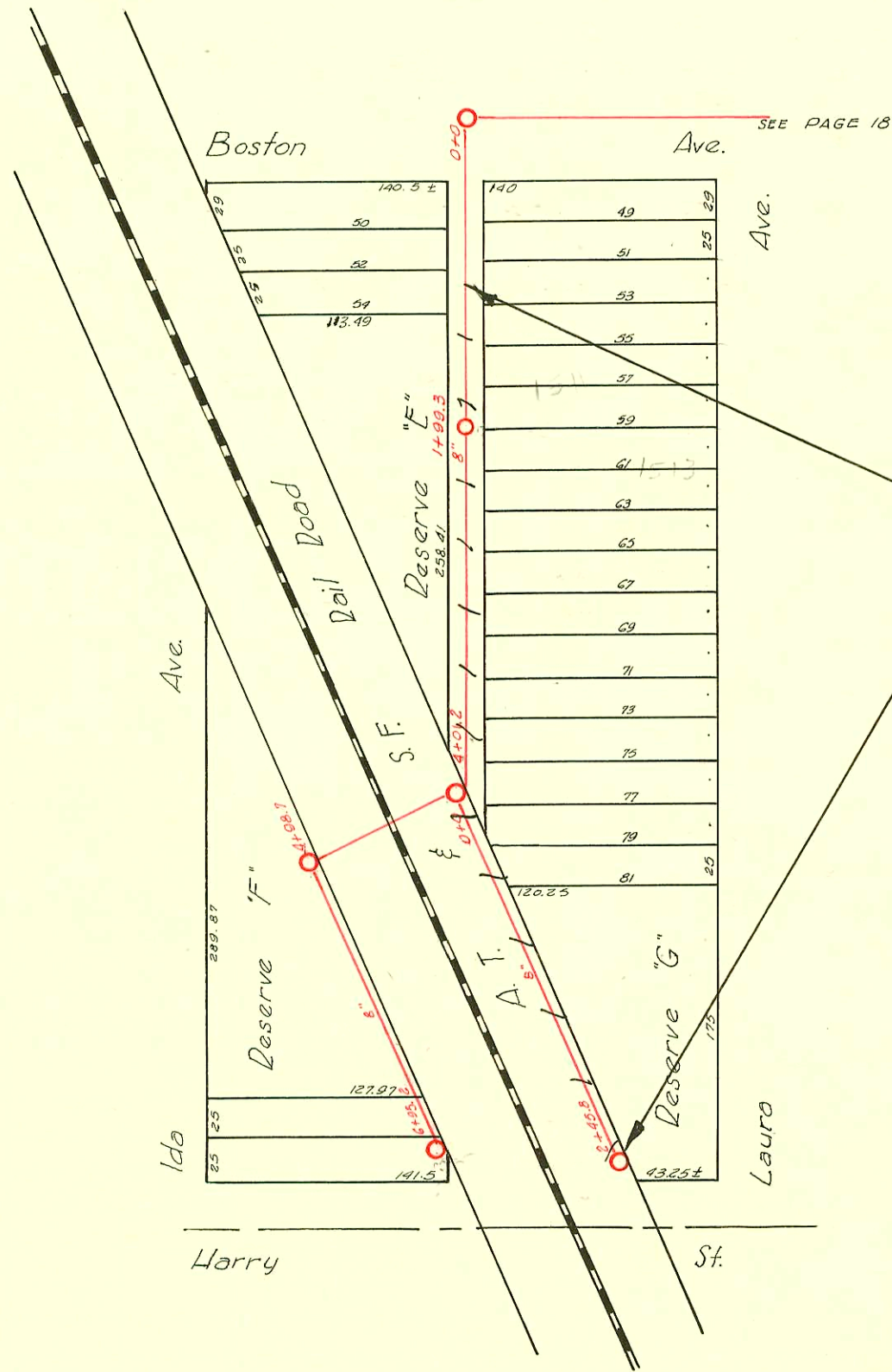


DIST. F-5.5. NO. 20-1920



Sewer abandoned  
See Bk. K-202

D-113

CONSTRUCTION RECORD						SERVICE RECORD						
STATION	ELEVATION		Depth	MANHOLE	4-INCH "Y" BRANCHES		No. of Permit		House Number		DATE OF PERMITS	
	Ground	Grade			North West	South East	North West	South East	North West	South East	North West	South East
0+0	101.10	96.20	4.90	0+0								
					+29	+31.5						
					+56	+58.5		#227				2-16-23
					+81.5	+84	#430		1502 Laura		3-7-24	
1+00	100.05	96.30	3.75		+06	+08.5	#62793	#200 #215	1534 Laura	1505 R Pattie	8-30-77	11-7-02 4-16-24
					+32	+43.5		#37		Pattie		2-2-21
					+57.5	+60	#1946		1508 Laura		10-8-49	
					+83	+85.5						
2+00	100.00	96.40	3.60	2+00								
					+09	+11.5	#1353	#7	1510 Laura	1511 Pattie	6-9-24	1-3-30
					+35.5	+38						
					+63	+56.5	#1198	#160	1514 Laura	1515 Pattie	5-24-24	1-29-23
					+87	+89.5	#961		1530 Laura		4-23-24	
3+00	99.35	96.50	2.85	3+00								
					+11	+13.5	#510	#143	1516 Laura	1527 Pattie	3-18-24	6-21-29
					+37	+39.5		#326		1523 Pattie		4-26-20
					+62.5	+65	#911		1518 Laura		4-22-24	
					+88.5	+91		#508		1531 Pattie		4-10-23
4+00	99.58	96.60	2.98									
					+14.5	+17						
					+40	+42.5		#161		1533 Pattie		1-29-23
					+65	+67.5	#913	#660	1530 Laura	1535 R Pattie	4-22-24	4-2-93 6-20-23
					+91	+93.5						
5+00	99.43	96.70	2.73									
					5+16.5	5+19			1548 Laura	is add wrong		
					5+42	5+44.5	#1116		1539 B Pattie		5-15-24	5-17-96
					5+68	5+70.5	#1557	#466	1544 Laura	1545 Pattie	8-2-25	8-24-23
					5+91	5+93.5					5-7-25	5-31-21
6+00	99.30	96.86	2.50	6+22								
					+15.5	+18		#203		1545 Pattie		4-20-31
0+0	102.14	96.61	5.53	0+0								
					+32.5	+35		#458	1111 Boston		6-8-49	
					+60	+62.5						
					+83.5	+86						
1+00	101.44	96.71	4.73	+99.3								
					+59.5	+12		#29		1535 Laura		1-14-26
					+35	+52.5	#3185		1510 Ida		11-24-50	
					+60.5	+63		#962		1151 Laura		4-28-24
					+86	+88.5		#1421		1513 Laura		1-10-48
2+00	100.97	96.81	4.16									
					+11.5	+14		#1641	1518 Ida		7-10-44	
					+37	+39.5		#1043		1515 Laura		5-7-24
					+63	+65.5						
					+88	+90.5						
3+00	101.00	96.91	4.09									
					+13	+15.5	#1150			1517 Laura		5-16-24
							#1133			1521 Laura		10-2-23
							#1069			1535 Laura		5-2-24
							#998					
4+00	100.75	97.01	3.74	+01.2								
5+00	100.61	97.11	3.50									
					+09.5							
					+35							
					+60.5							
					+86							
6+00	100.01	97.21	2.80	+95.2								
					+12			#295	1110 E. Harry		5-25-49	
					+37.5		#6570		1536 Ida		11-23-51	
					+63.5							
					+90.0							
0+0	-Sta. 4+01.2		3.74	0+0								
					+03.5			#529		1541 Laura		6-24-27
					+35			#57		1547 Laura		2-26-37
					+62.5							
					+88							
1+00	101.91	97.11	4.80									
					+13			#2973		1549 Laura		12-23-50
					+39							
					+64.5							
					+90.5							
2+00	101.21	97.21	4.00	+45.8				#507		1130 E. Harry		11-21-36
					+15.5							
					+40.5							

#5335 - Top - 1217 E. Bayley - 7-23-51 - Joe McDonald  
 #6368 - Top - 1536 Ida - 11-23-51 - G.A. Smith  
 #6569 - Top - 1536 Ida - 11-23-51 - G.A. Smith  
 #1895 - Top - 1220 E. Harry - 1-31-45 - Harley Diggs  
 #1353 - Top - 1218 E. Harry - 12-30-47 - Moore - Robertson Plog. Co.  
 #1354 - Used old connection (1218 E. Harry) - 12-30-47 - Moore - Robertson Plog. Co. (S.O.)  
 #3790 - Top - 1510 Ida - 9-14-51 - Joe McDonald  
 #2210 - Private Line - 1510 Ida - 8-13-52 - Joe McDonald - Trailer  
 #5408 - 2 1/2" Dia. 1511 Laura (Trailer) Cannon Hwy. 9-30-57  
 #5409 - Private Line - 1511 Laura (Trailer) Cannon Hwy. 9-30-57  
 C 71390 - 1506 Laura - 4-24-79  
 C 71408 - 1506 Laura - 4-25-79 - New Conn. Jap (1+40.3)  
 C 65096 - 4-9-78 (6+19)  
 #3211 - 12-5-77 - at turning  
 #93-6907-7 - 1535 db. Pattie - R - 4" PVC 40 upper 27'; 4" SDR 35 lower end to 5' ft from main - 1/4" pt shallow - No alley cut