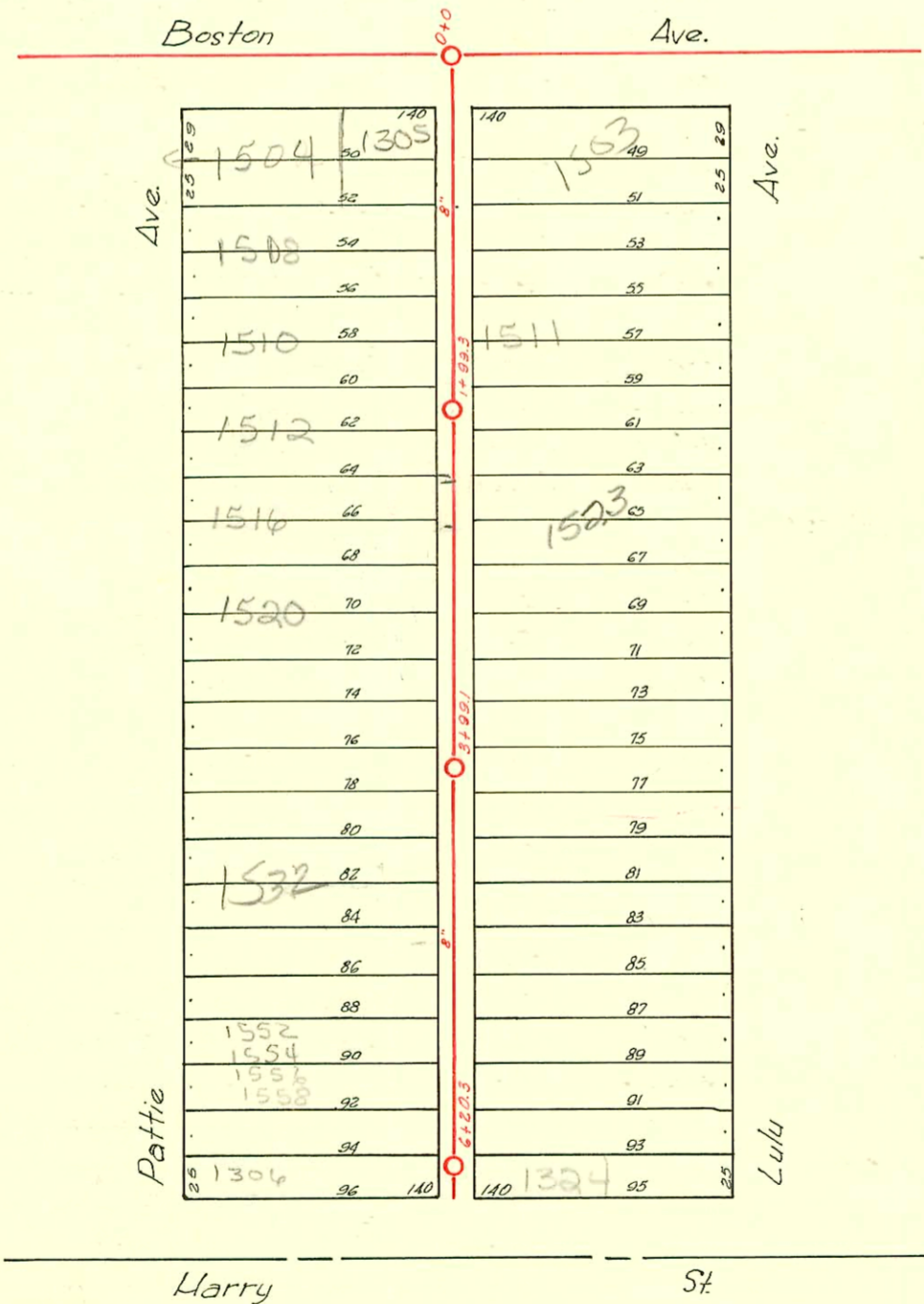


DIST. F-5.3. NO. 20-1920



2002-01272 516102 1547 S Ellis - Jones Swr - 4" 40 PVC - Replaced all but lower 5', installed 4" twin co at house - no bends

2002-00859 3166102 1543 S Ellis - Jones Swr - Twin co 4" 40 PVC, Replaced apx 10' high end + 10' low end tied back to clay tie apx 10' from main, twin co, 1H22

D-114

CONSTRUCTION RECORD

SERVICE RECORD

STATION	ELEVATION		Depth	MANHOLE	4-INCH "Y" BRANCHES		No. of Permit		House Number		DATE OF PERMITS			
	Ground	Grade			North West	South East	North West	South East	North West	South East	North West	South East	North West	South East
0+0	102.54	95.79	6.75	0+0	+27 +53 +79	+39.5 +55.5 +81.5	#27 #21 C56995	#439 #1133	1502 Lulu 1503 Ellis 1501 Ellis 1403 E. Boston	1503 1507 1515	1-2-73 3-31-25 3-7-42 8-2-76	10-17-41 3-7-42		
1+00	101.55	95.99	5.56		+05 +30 +56 +82	+07.5 +32.5 +58.5 +84.5	#959 #536	#1134	1506 Lulu 1510 Lulu	1507 1515	4-28-29 3-24-24	3-7-42		
2+00	101.37	96.19	5.18	2+00.7	+09 +37.5 +63.5 +89	+11.5 +48.7 +66 +91.5	#681 #1768	#113572 #813 #600	1512 Lulu 1516 Lulu 1527 Lulu	1527 1522 1522	4-4-24 8-2-24	2-20-74 3-29-23 4-24-23		
3+00	101.21	96.39	4.82		+14 +40 +67 +92	+16.5 +42.5 +69.5 +94.5	#110 #831	#1010	1528 Lulu 1534 Lulu	1530	11-17-33 4-15-24	7-10-23		
4+00	101.49	96.59	4.90	+06	+17.5 +43 +68.5 +94.5	+20 +45.5 +71 +97	#713 #1644 #236	#2002 #233 #1000 #1493	1536 Lulu 1540 Lulu 1544 Lulu 1493	1543 RR 1547 R 1547 R	4-7-24 7-16-24 5-29-24	5/6/02 sp/6/02 2-19-24 5/6/02 10-18-29		
5+00	101.57	96.79	4.78		+19 +44 +70 +95	+21.5 +46.5 +72.5 +97.5	#21 #927 #830	#1122	1552 Ellis 1552 Lulu 1560 Lulu	1557 1557	1-11-26 4-23-24 4-15-24	5-15-24		
6+00	101.47	96.99	4.98	+21	+13	+15.5								
0+0	103.27	95.36	7.91	0+0	+36.5 +62.5 +88	+39 +65 +90.5	#499 #511	98-4327 #1000 #808	1544 Pattie 1503 R Lulu 15017 Lulu	1503 R 15017	5-10-28 5-15-28	3-20-98 5-1-24 4-14-24		
1+00	102.39	95.56	6.83	+99.3	+13.5 +39 +63.5 +90	+16 +41.5 +66 +92.5	#1046 #387 #183 #299	#207	1511 Lulu 1505 Lulu 1524 Pattie 1520 Pattie	1519	8-13-38 3-3-24 11-28-21 4-20-20	3-26-27		
2+00	102.32	95.76	6.56		+10 +39.5 +66.5 +93	+18.5 +42 +69 +95.5	#508	#650 #651	1526 Pattie 1523 R Lulu 1527 Lulu	1523 R	6-13-21 4-1-24 4-1-24	11-19-01 4-1-24		
3+00	101.82	95.96	5.86	+99.1	+18 +43.5 +69.5 +95.5	+20.5 +46 +72 +98	#870 #38	#1520	1531 Lulu 1526 Pattie 1528 Pattie	1533 Lulu 1531510 Lulu 1535 Lulu	8-1-52 11-19-90 6-7-23 1-10-25	3-22-24 7-10-24		
4+00	101.62	96.16	5.46		+21.5 +47 +71.5 +98.5	+24 +49.5 +74	Top #30 #742	#2001-02948 #623	1533 RR Lulu 1532 Pattie 1536 Pattie	1533 RR	3-31-24 9-4-41 5-16-23			
5+00	102.39	96.36	6.03		+25 +50 +75.5 +99	+27.5 +52.5 +78	#2985 #1847 #208	#195 #8224 #1847	1552 Pattie 1524 Lulu 1504 Pattie	1324 E Harry 1527 Lulu	1-6-50 12-14-23 2-15-24	9-15-83 3-31-24		
6+00	102.42	96.56	5.86	+20.3	+13	+15.5	#676	#1151	1522 E. Harry 1556 Pattie		5-6-52 7-5-30			

Tap C22990 - 1512 Pattie - Gerald Thompson - 2-18-71 (1+94.9)
 C18548 - 1512 Pattie - Al Manning - 3-24-70 (1+78.6)
 #299 - 1520 Pattie - 4-20-20
 #1193 - Tap - 1501 Lulu - 8-31-29 - Wayne H. Warren
 #1027 - Tap - 1412 E. Harry - 3-5-45 - Howard Shepherd
 #3921 - Setting wye - 1516 Lulu - 12-12-30 - Jensen Plog.
 #6393 - Private Line - Trailer - 1516 Lulu - 9-10-53 - Jensen Plog. Co.
 #5960 - Tap - 1412 E. Harry - 7-28-53 - Joe McDonald
 #1815 - Private Line - 1536 Pattie - 8-24-54 - Creekmore
 #1551 - Tap - 1529 Ellis - Baker - 1-25-51
 #c66176 - 50' 1324 E. Harry - 5-2-76 Al Manning (1+03.3)
 NC # 91 95 1324 E. Harry 9-15-83 (1+6+20.3) Randy Dunsmuir