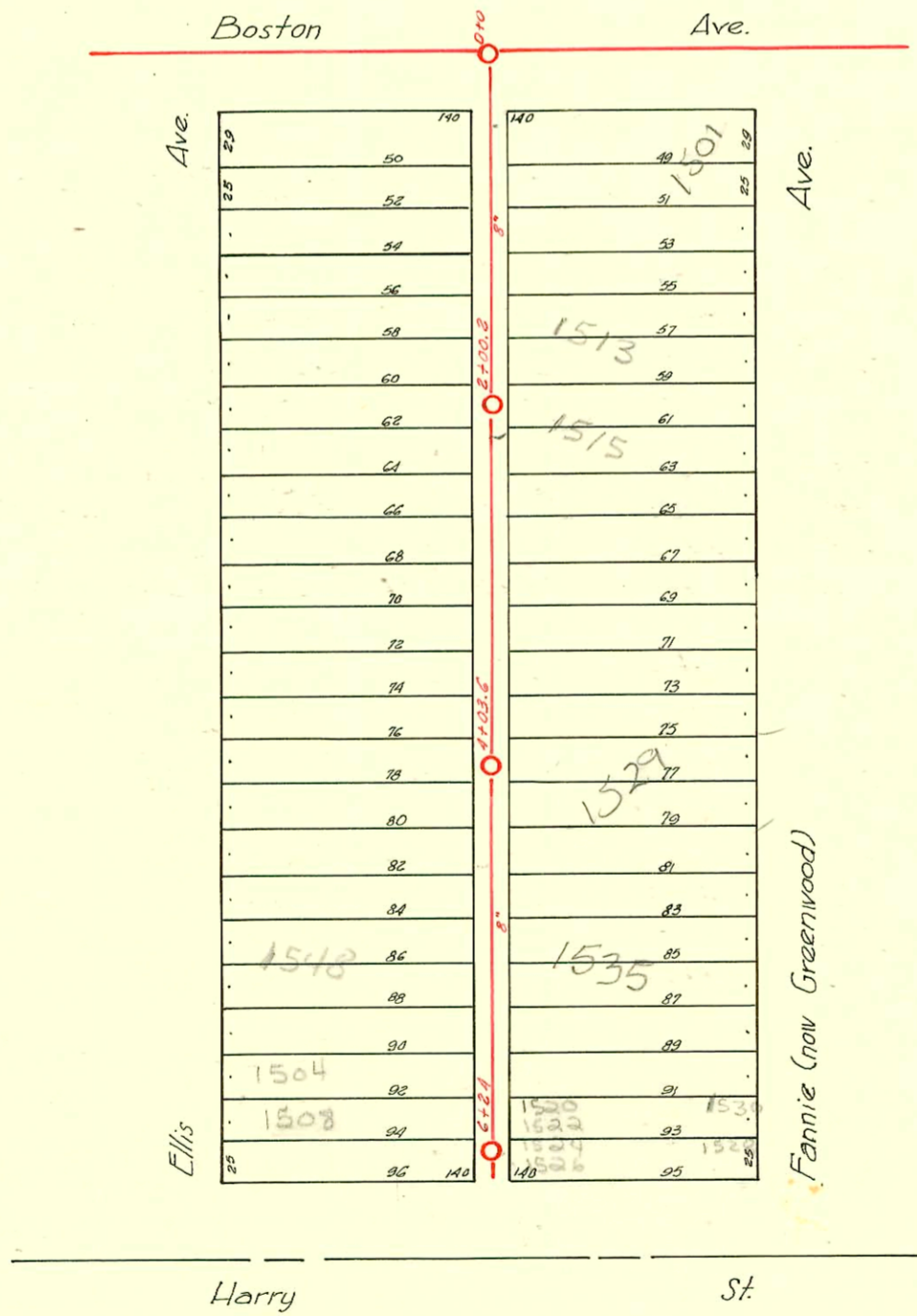
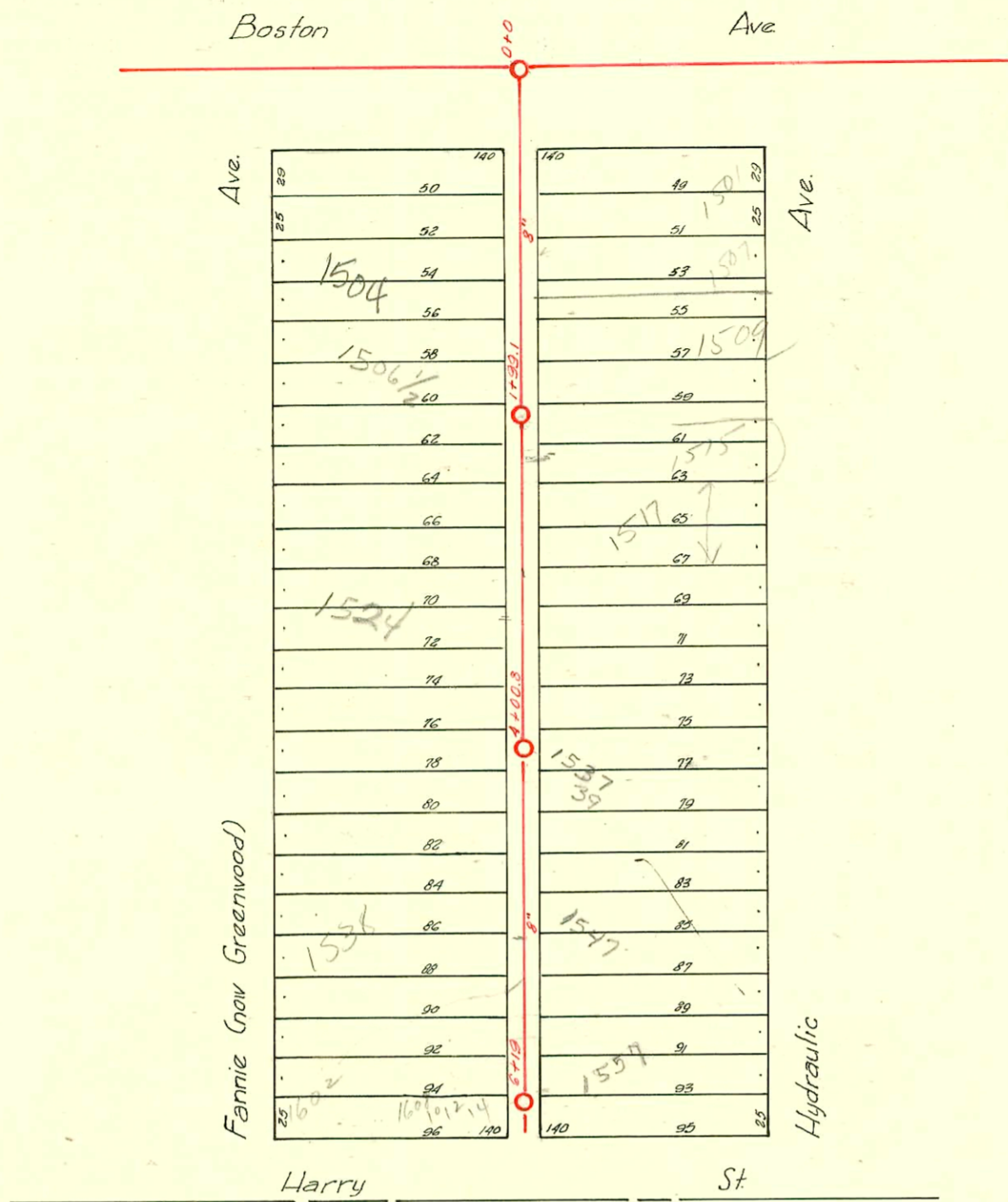


DIST. F - S.S. NO. 20
1920



D-115

CONSTRUCTION RECORD

SERVICE RECORD

STATION	ELEVATION		Depth	MANHOLE	4-INCH "Y" BRANCHES		No. of Permit		House Number		DATE OF PERMITS	
	Ground	Grade			North West	South East	North West	South East	North West	South East	North West	South East
0+0	102.47	94.92	7.55	0+0	+37	+39.5	#731	#1785	1502 Ellis	1501 Fannie	5-15-23	4-1-98 8-5-24
					+63.5	+66			1504 Ellis		8-27-27	
1+00	101.72	95.12	6.60		+14	+16.5	#1031	#644	1512 Ellis	1509 1513 Fannie	7-13-23	1-4-24
					+39.5	+42			1514 Ellis	1515 B Greenwood	7-13-23	3-20-89 4-1-24
					+66	+68.5	#1032	22759 645				
					+91.5	+94						
2+00	101.82	95.32	6.50	2+00.2	+16.5	+19				1513 Fannie	using see above	3-20-89 4-1-24
					+42	+44.5	#1830	#6	1518 Ellis	1517 Fannie	12-13-23	4-25-40
					+66.5	+69	#1711		1520 Ellis	1545 S. Hyd.	11-20-23	1-5-28
					+91.5	+94						
3+00	102.27	95.52	6.75		+18	+20.5	#1725	#676	1532 Ellis	1525 Fannie	7-25-24	6-22-55 9-18-46
					+43	+45.5				1511 Fannie		
					+70	+72.5						
					+95	+97.5*				1515 Fannie		7-5-46
4+00	101.89	95.72	6.17	4+03.6	+21	+23.5	#1815		1538 Ellis		8-8-24	
					+48	+50.5	#574	#35	1542 Ellis	1533 Fannie	3-26-24	1-18-26
					+73	+75.5						
					+98							
5+00	101.64	95.92	5.72			Seal off	#2001	1259	1535 Ellis		1-26-01 11-30-28	
					+20.5	+27.5	#195877	2039	1528 Ellis		12-1-94 4-15-46	
					+50.5	+53	#2039	2039	1504-06 HARRY		1-15-68	
					+75	+77.5	#15975	1520	1532 Ellis		12-1-27-7	
					+96.5	+99	#15974	1520	1512 Ellis		6-2-67	
6+00	101.59	96.12	5.47	6+24	+17	+19.5						
0+0	102.32	94.64	7.68	0+0	+39	+41.5	#1261	#2421	1504 Fannie	1507 S. Hyd.	6-2-24	10-27-24
					+65	+67.5						
1+00	102.39	94.79	7.60	1+99.1	+16	+18.5	#1904	#644	1506 Fannie	1509 Fannie	12-26-23	1-23-06 2-11-91 4-1-24
					+41	+43.5						
					+67	+69.5	#1459	#1966	1508 Fannie	1511 S. Hyd.	10-3-23	8-29-24
					+92	+94.5						
2+00	102.57	94.94	7.63		+18	+20.5	#2360	#645	1516 Fannie	1513 S. Hyd.	10-20-24	4-1-24
					+44	+46.5						
					+70	+72.5	#1084	#914	1517 S. Hyd.	1527 S. Hyd.	4-26-40	7-21-23
					+93.5	+96	#3127		1524 Greenwood		1-23-50	7-22-29
3+00	103.16	95.10	8.06		+19	+21.5	#1559					
					+46	+48.5	#1879	#1881	1526 Fannie	1533 Greenwood	8-18-24	4-28-47
					+72	+74.5				1535 S. Hyd.		4-9-23
					+95	+97.5				1537 S. Hyd.		1-31-50
4+00	102.13	95.25	6.88	4+00.8	+21.0	+23.5	#2082	#1350	1530 Fannie	1549 S. Hyd.	9-12-24	12-29-47
					+46	+48.5	#1504		1534 Fannie		5-29-24	
					+71.5	+74						
					+95	+97.5						
5+00	101.61	95.40	6.21		+20	+22.5	#22537		1536 Fannie		7-7-24	5-22-91
					+46	+48.5	#2272		1602 E. Harry		3-18-49	
					+71	+73.5						
					+97	+99.5						
6+00	101.13	95.55	5.58	6+19	+15	+17.5	#608	#788		1557 S. Hyd.		6-16-23
										1559 Hydraulic		1-26-68

*# 1389-1527 Greenwood 2-5-47

R 17958 1515 S Hydraulic 3-12-87 meeting (use spot 10' N of S-prop line)
 80 15379-1541 S Hydraulic 6-2-77 - OK Hearing

#16-Top-1545 S Hydraulic-11-16-42-Harley Riggs
 #2979-Used Old Connection-1557 S Hydraulic-4-26-46-Joe's Plog. Co.
 #347-Top-1612 E. Harry-7-2-46-Moore-Robertson Plog. Co.