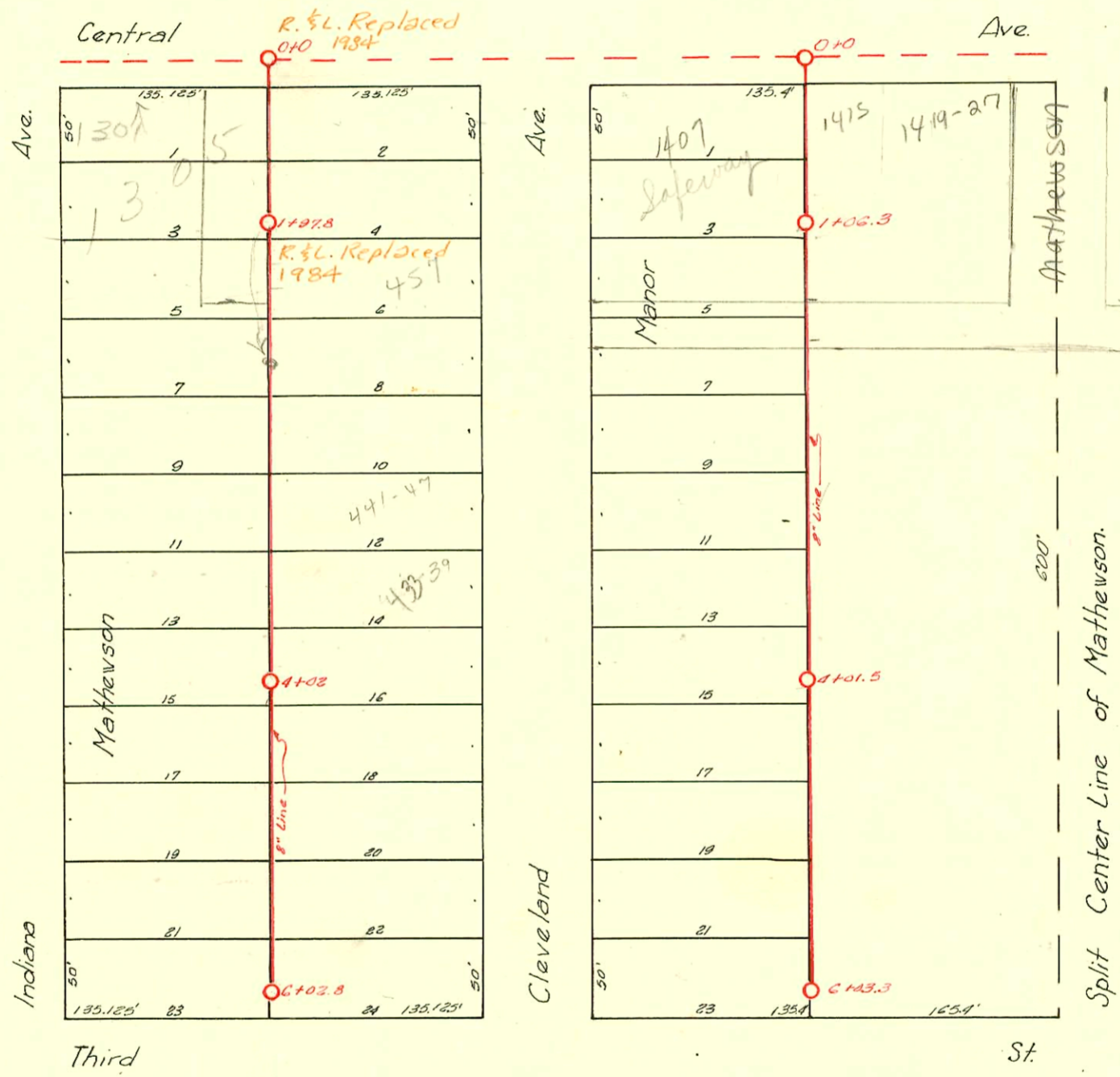


LAT. I - DIST. Y - S.S. NO. 20 - 1922



D-117

### CONSTRUCTION RECORD

### SERVICE RECORD

STATION	ELEVATION		Depth	MANHOLE	4-INCH "Y" BRANCHES		No. of Permit		House Number		DATE OF PERMITS	
	Ground	Grade			North West	South East	North West	South East	North West	South East	North West	South East
0+0	111.89	103.79	8.10	0+0	0+25 +51.2 +75.8 +118.8	0+22.5 +48.7 +71.0 +73.2	6197 #205	211486	1305 E Central 450 Indiana 1305 Central	1315 E Central	7-22-82 4-21-31	11-14-65
1+0	110.70	104.00	6.70	1+978	1+02.5 +27 +53.7 +78.3	1+00.0 +24.5 +51.2 +75.8	11009 #2109	#2662 #C10627 1934	459 Cleveland 448 Indiana Cleveland	(451) 459 Cleveland	5-24-84 6-18-42	2-5-46 3-26-79 5-23-42
2+0	111.00	104.40	6.60	2+0A.5	2+0A.5 +30.5 +54.8 +80.8	2+02 +28 +52.3 +78.3	#2108 #2107	#18988 1933	440 Indiana 430 Indiana	5.0 441-441 Cleveland	6-18-42 6-18-42	9-3-87 5-23-42
3+0	111.10	104.80	6.30	3+06.2	3+06.2 +31.5 +57.3 +83.5	3+03.7 +29 +54.8 +81	#2106 #2105		424 Indiana 416 Indiana		6-18-42 6-18-42	
4+0	111.20	105.20	6.00	4+02	4+09.5 +33.7 +60 +85.7	4+07 +31.2 +57.5 +83.2						
5+0	111.67	105.60	6.07	5+12.3	5+12.3 +37.1 +62.5	5+09.3 +34.6 +60.5	#1587		405 Cleveland			5-6-39
6+0	112.03	106.00	6.03	6+02.8	6+02.8 +87.2 +98.5	6+0 +84.7 +96	C72771		405 N. Cleveland			7-5-79
0+0	111.73	102.75	8.98	0+0	0+22 +47 +73.5 +94.5	0+19.5 +44.5 +71 +92						
1+0	112.13	103.25	8.88	1+06.3	1+24.5 +50.8 +76.2	1+22 +48.3 +73.7	#2351		1407 E. Central		7-8-42	
2+0	111.60	103.75	7.85	2+00.9	2+00.9 +27.5 +52.3	+98.4 +25 +49.8	#1064	#1364	450-2-4-6 Cleveland 440-2-4-6 Cleveland	469-11-13-25 Mathewson Ct.	2-16-42	4-1-42
3+0	111.88	104.25	7.63	3+25.8	3+25.8 +32.5 +57	3+03.3 +30 +54.5	#1130	#1362	420-2-4-6 Cleveland 449-51-53-55 Mathewson Ct.	459-01-63-05 Mathewson	3-7-42	4-1-42
4+0	112.03	104.75	7.28	4+03.5	4+03.5 +33.2 +60.5 +86	4+06 +30.7 +58 +83.5	#1131 #1272 #1132	#1272	439-41-43-45 Mathewson	429-21-39-35 Cleveland Mathewson	3-7-42 3-7-42	3-24-42
5+0	111.83	105.25	6.58	5+11.1	5+11.1 +36.5 +62.5	5+08.6 +34 +60	#1270 #1271	#1274	410-21-23-25 Mathewson	409-11-13-15 Mathewson	3-24-42	3-24-42
6+0	111.76	105.75	6.01	6+03.3	6+03.3 +36.5 +62.5	6+0 +34 +60	#1271	#1361	1402-4-6-8 East 3rd	1414-16-18-20 East 3rd	3-24-42	4-1-42

Line South of Central-Indiana to Cleveland.

Line South of Central 170' East of E. of Cleveland.

C11659-1315 E Central - Union & Country Pkg 11-22-68 - Tap (11+05.7)  
 C7000-1305 E Central - Kendall Pkg 2-23-68 - Used old connection - no man.  
 #1522-405 Cleveland 5-6-39 (Tapped into M.H. 67038) E.B. Brennan.  
 #1932-433 Cleveland 3-23-42 - Tap - Chester Davidson 9-3-87  
 #1508 - Tap - 407 Cleveland - 4-19-44 - Frederick Pkg. Co.  
 #1609 - Tap - 409 Cleveland - 6-20-44 - Frederick Pkg. Co.  
 #2312 - Tap - 1415 E. Central - 10-2-45 - J.C. Lansdowne.  
 #4043 - Tap - 409 Cleveland - 4-4-55 - Kendall Pkg. Co.  
 #2562 - Tap - 1315 E. Central - 1-8-45 - Moore - Robertson  
 #2674 - Tap - 1311 E. Central - 2-8-46 - Frederick Pkg. Co.  
 #2932 - Used Old Connection - 1419 E. Central - 12-27-49 - Brodie Pkg. Co.  
 #4025 - Tap - 409 Cleveland - 3-30-55 - Kendall Pkg. Co.  
 #9708 - Tap - 11-4-36' as of 0+00' at S. Indiana Ave. Rep. Robertson 10-20-58  
 93-10452-9 5-3-93 1419 1/2 E Central - Replaced 11ft of line behind front building only 4" PVC 40; 4" of shallow (Central convenient store).

18987

C 6999