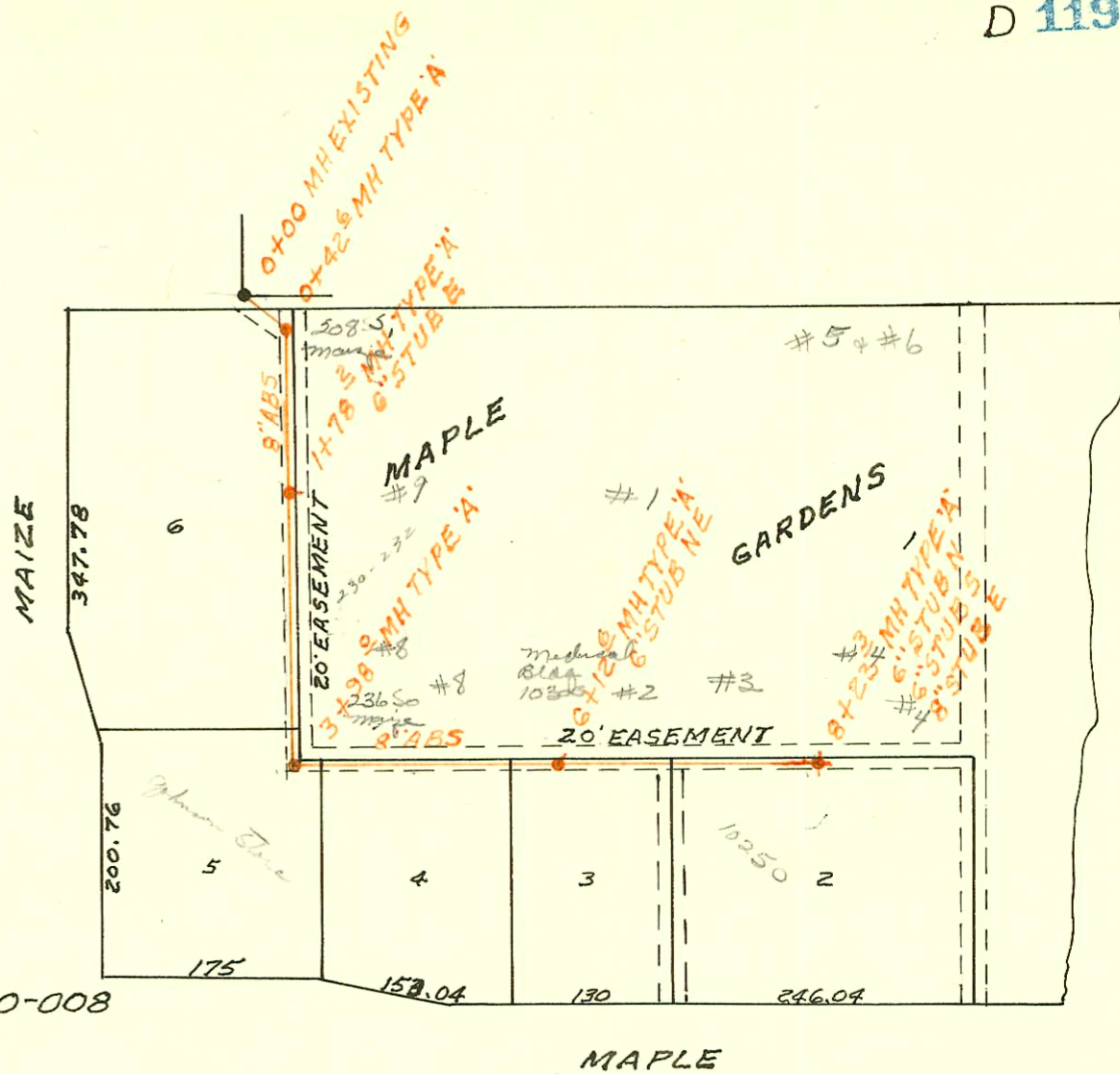


SCALE 1" = 150'



MAPLE GARDENS SAN SEWER
 BUILT BY: LA KNEBLER CONST. CO.
 PROJ. NO 468-76-245-80546-000-000-008
 BOOKED 3-16-79 FROM JKSW 10

0.6 m

2002-00094 410102 - 223 S Westlink Dr - Jayhawk - 4" PVC, 17" WIDEN - Replace 17' on west side of bldg - (Go behind clubhouse 1st bldg N of Maple - near pool.

CONSTRUCTION RECORD						SERVICE RECORD						
STATION	ELEVATION		Depth	MANHOLE	4-INCH "Y" BRANCHES		No. of Permit		House Number		DATE OF PERMITS	
	Ground	Grade			North West	South East	North West	South East	North West	South East	North West	South East
WSU INTERCEPTOR (CONT'D)												
60+00	199.7	179.34	20.4									
61+00	201.8	179.69	22.1									
	202.7	179.99	22.7	61+85.8								
62+00	202.7	180.04	22.7									
63+00	203.2	180.39	22.8									
64+00	203.2	180.74	22.5									
65+00	202.1	181.09	21.0									
	201.5	181.24	20.3	65+41.8								
66+00	200.8	181.44	19.4									
67+00	199.1	181.79	17.3									
68+00	196.2	182.14	14.1									
69+00	192.3	182.49	9.8									
	192.3	182.51	9.8	69+04.3								
70+00	188.5	182.84	5.7									
	186.8	183.11	3.4	70+76.9								
		183.36	3.4									
71+00	186.9	183.46	3.4									
72+00	187.7	183.88	3.8									
73+00	188.2	184.30	3.9									
	189.0	184.67	4.3	73+89.3								
74+00	189.1	184.72	4.4									
75+00	190.5	185.14	5.4									
76+00	192.7	185.56	7.1									
77+00	194.8	185.98	8.8									
	195.1	186.01	9.1	77+06.7								
	196.2	186.20	10.0	77+51.6								
MAPLE GARDENS SAN SEWER												
0+00	129.9	123.81	6.1	EXISTING								
	131.6	124.08	7.5	0+42.6	Tap 0+50.3		C 70549		208 So. Maple		3-9-79	
1+00		124.31										
	132.6	124.62	8.0	1+78.2	6" STUB E Tap 1+90.0		C69283		10200 W Maple #1			
2+00		124.71										
3+00		125.11			Tap 2+93.4		C69289		10200 W Maple #8		11-6-79	
	132.5	125.50	7.0	3+98.0	3+12.0 Tap 3+91		#20646 C69179		208 So. Maple #2		6-29-80	
		125.60	6.9						236 So. Maple		11-31-78	
4+00		125.61										
5+00		126.01			Tap 5+27.6		C69238		10200 W Maple #2		11-2-79	
6+00		126.41			Tap 6+09.5		C69292		10200 W Maple #8		12-4-78	
	132.1	126.46	5.6	6+12.6	6" STUB NE Tap 6+36.5		C69284		10200 W Maple #2		11-6-78	
7+00		126.81			Tap 7+63.6		C69286		10200 W Maple #3		11-6-78	
					Tap 7+92.7		C69288		10200 W Maple #4		11-6-78	
8+00		127.21										
	131.6	127.30	4.3	8+23.3	6" STUB S 8" STUB E		C69285		10200 #586 Maple		11-6-78	