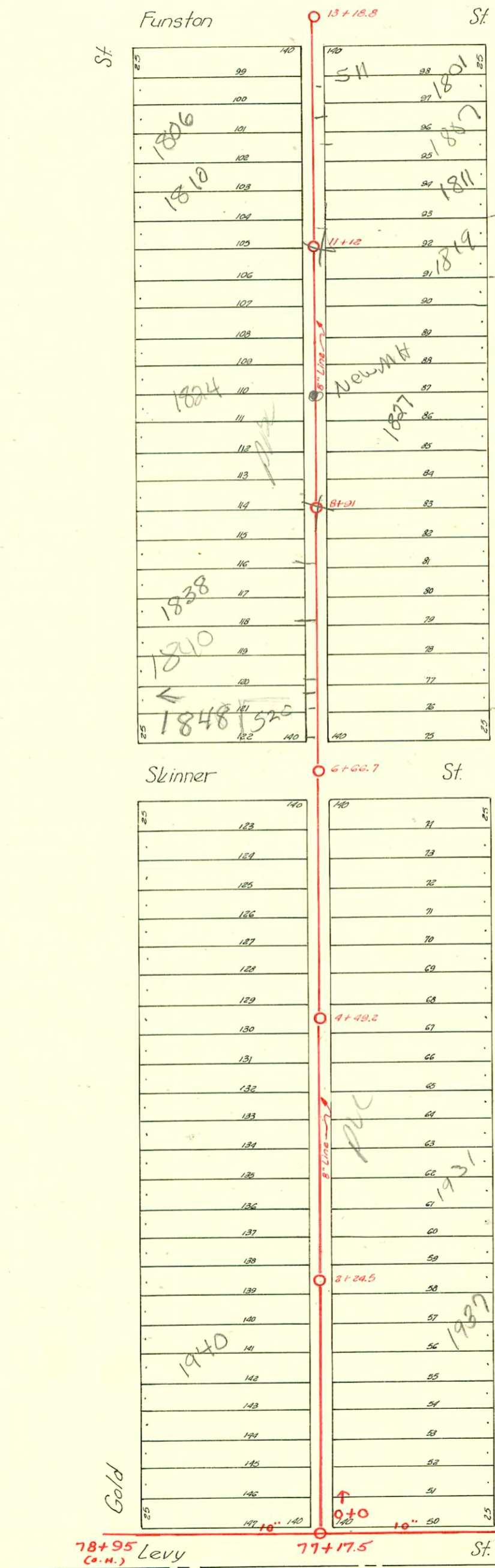


LAT. R - DIST. C - S.S. NO. 20 - 1920



See GIS
line chg to PVC
MH changes
conn for 1840 does
not appear to be
correct from GBA TU
SSK

520 E. Gilbert - 27' N MH 666.7
1848 S. Gold } 52' N
 } 66' N
1840 S. Gold - 78' N
1838 S. Gold - 129' N

1848 S. Gold was not connected
when main chg. to PVC.
CONTR. Reconnected on 03/05/04

See
GIS
MH's changed

- 2001-02708 - 10/26/01 - 1801 Palisade - Padgett - 4" Sch 40 77.6' S of MH 13+18.8 (12+41.2) Replaced lower 15' of line 16' from main Twin Co
- 2003-01127 - 4/28/03 - 1810 Gold - Kansas Ditching - 4" Sch 40 4" wye repair 73' N of MH 11+12 (11+8.5) Shallow - replace entire line - 2H 22 - 4" 2-way CO @ house, dirt alley cut
- MP 2006-00752 - 1927 S Palisade - 4" Sch 40, Tap @ 23' Sg MPL, 25' full shallow, 4" clo @ house, (1) 4SV - Brand Plm
- clo 2006-00440 - 1915 S Palisade - 4" Sch 40, clo @ house - Ceddi Ind

| CONSTRUCTION RECORD | | | | | | | SERVICE RECORD | | | | | | |
|---------------------|-----------|-------|-------|--------------|---------------------|------------|----------------|------------|--------------|------------|-----------------|------------|---------|
| STATION | ELEVATION | | Depth | MANHOLE | 4-INCH "Y" BRANCHES | | No. of Permit | | House Number | | DATE OF PERMITS | | |
| | Ground | Grade | | | North West | South East | North West | South East | North West | South East | North West | South East | |
| 0+0 | 102.25 | 96.30 | 5.45 | 0+0 | | | | | | | | | |
| | | | | | +23 | +20.5 | | # 77 | 1949 | Palisade | | 4-10-24 | |
| | | | | | +46.5 | +44 | | | | | | | |
| | | | | | +72.5 | +70 | # 1053 | # 530 | 1943 | 1947 | 8-14-29 | 6-17-49 | |
| | | | | | +95.7 | +93.2 | # 3269 | | 1952 | Gold | | 2-10-50 | |
| 1+00 | 101.87 | 96.87 | 5.00 | | | | | | | | | | |
| | | | | | 4" PVC CO | | 2007-02640 | | 1948 R | 1939 | 9-25-02 | | |
| | | | | | +26.5 | +24 | # 1339 | | Gold | Palisade | 8-14-29 | 7-2-24 | |
| | | | | | +50.5 | +48 | | | | | | | |
| | | | | | +78.5 | +76 | | # 1666 | | 1937 | Palisade | | 7-21-24 |
| 2+00 | 103.80 | 96.94 | 6.86 | 2+24.5 | | | | | | | | | |
| | | | | | +02.5 | +00 | | | | | | | |
| | | | | | +32.2 | +29.7 | | | | | | | |
| | | | | | +56.4 | +53.9 | # 904 | | 1926 | Gold | | 10-22-27 | |
| | | | | | +82.6 | +80.1 | | # 935 | | 1933 | Palisade | | 4-24-24 |
| 3+00 | 103.16 | 97.00 | 6.16 | | | | | | | | | | |
| | | | | | +05.5 | +03 | | | | | | | |
| | | | | | +31.5 | +29 | # 2133 | # 1280 | 1922 | 1931 | 6-20-42 | 11-25-25 | |
| | | | | | +58.5 | +56 | | | | | | | |
| | | | | | +84.5 | +82 | # 3055 | | 1924 | Gold | | 1-16-50 | |
| 4+00 | 102.79 | 97.06 | 5.73 | 4+49.2 | | | | | | | | | |
| | | | | | +10.5 | +08 | # 1223 | # 461 | 1936 | 1923 | 9-6-29 | 7-29-46 | |
| | | | | | +35.5 | +33 | # 708 | | 1925 | Palisade | 8-10-21 | 7-22-52 | |
| | | | | | +61 | +58.5 | | # 1985 | | 1917 | Palisade | | 4-2-48 |
| | | | | | +86.8 | +84.3 | | # 1935 | | 1911 | Palisade | | 3-12-46 |
| 5+00 | 102.44 | 97.12 | 5.32 | | | | | | | | | | |
| | | | | | +13 | +10.5 | # 107 | | 1912 | Gold | | 10-24-33 | |
| | | | | | +38.5 | +36 | | | | | | | |
| | | | | | +64.7 | +62.2 | # 1530 | # 2030 | 1904 | 1905 | 10-25-29 | 5-1-45 | |
| | | | | | +91.5 | +89 | # 3327 | # 1501 | Gold | W. Skinner | 2-15-50 | 5-7-29 | |
| 6+00 | 103.39 | 97.18 | 6.21 | 6+66.7 | | | | | | | | | |
| | | | | | +17.7 | +15.2 | | | | | | | |
| | | | | | +94.5 | +92 | # 20609 | | 529 R | W. Skinner | | 5-4-88 | |
| 7+00 | 103.09 | 97.24 | 5.85 | | | | | | | | | | |
| | | | | | +18.3 | +16.8 | # 1885 | | 1848 | Gold | | 5-4-88 | |
| | | | | | +45.7 | +43.2 | # 1584 | | 1849 | Gold | | 4-22-42 | |
| | | | | | +71.5 | +69 | # 533 | | 1839 | Gold | | 5-26-30 | |
| | | | | | +96.5 | +94 | # 2004 | # 00070 | 1838 | 39 R | | 1-8-04 | |
| 8+00 | 102.84 | 97.30 | 5.54 | 8+91 | | | | | | | | | |
| | | | | | +23 | +20.5 | | | | | | | |
| | | | | | +48 | +45.5 | # 2539 | | 1836 | Gold | | 12-27-45 | |
| | | | | | +73 | +70.5 | | | | | | | |
| 9+00 | 103.49 | 97.36 | 6.13 | 8+91 | | | | | | | | | |
| | | | | | +02.5 | +00 | # 24213 | | 1834 | Gold | | 5-7-71 | |
| | | | | | +27.9 | +25.4 | # 1024 | | 1834 | Gold | | 8-12-70 | |
| | | | | | +54.5 | +52 | # 2432 | | 1831 | Palisade | | 8-3-29 | |
| | | | | | +79.5 | +77 | # 979 | | 1827 | Palisade | | 10-28-24 | |
| 10+00 | 102.91 | 97.42 | 5.49 | | | | | | | | | | |
| | | | | | +06.5 | +04 | # 1090 | | 1832 | Gold | | 9-11-28 | |
| | | | | | +30.5 | +28 | # 2000-00520 | | 1824 R | Gold | | 9-12-29 | |
| | | | | | +55.5 | +53 | # 1203 | | | | | | |
| | | | | | +81.1 | +78.6 | # 950 | # 1831 | 1820 | 1835 | 4-30-43 | 9-11-24 | |
| 11+00 | 103.13 | 97.48 | 5.65 | 11+12 | | | | | | | | | |
| | | | | | +08.5 | +06 | # 1049 | | 1812 | Gold | | 5-7-24 | |
| | | | | | +32 | +29.5 | # 1233 | | 1819 | Gold | | 9-6-29 | |
| | | | | | +58.9 | +56.4 | # 1815 | | 1819 R | Palisade | | 9-25-48 | |
| | | | | | +82.9 | +80.4 | # 2003-01364 | | 1812 | Palisade | | 5-6-29 | |
| 12+00 | 102.96 | 97.54 | 5.42 | | | | | | | | | | |
| | | | | | +11.2 | +08.7 | # 4088 | | 1811 R | Palisade | | 5-21-03 | |
| | | | | | +36.5 | +34 | # 2982 | | 1810 | Palisade | | 1-4-50 | |
| | | | | | +62.7 | +60.2 | # 252 | # 7220 | 1806 R | 1807 | 5-12-00 | | |
| 13+00 | 102.91 | 97.60 | 5.31 | 13+18.8 | | | | | | | | | |
| | | | | | +11.2 | +08.7 | # 19 | | 1801 R | Palisade | | 12-1-47 | |
| | | | | | +36.5 | +34 | # 1130 | | 1800 | Palisade | | 5-16-24 | |
| | | | | | +62.7 | +60.2 | # 252 | # 7220 | Gold | W. Funston | | 6-18-47 | |
| 76 | 103.42 | 96.59 | 6.83 | | | | | | | | | | |
| 77 | 103.32 | 96.69 | 6.63 | | | | | | | | | | |
| 78 | 103.02 | 96.70 | 6.32 | 77+17.5 | | | | | | | | | |
| 79 | 100.02 | 96.79 | 3.23 | 78+95 (O.H.) | | | | | | | | | |
| 79 | 99.02 | 96.89 | 2.13 | | | | | | | | | | |

Line in Levy.

R 2000-00522-1824 Gold-Roto Rooter-2/28/00-4" SCH40-install CO at house

972- Tap into main - 8-8-22
 # 853- Tap - 2001 Palisade - 10-6-26
 # 4754- Tap - 1924 Gold - 4-7-53 - Joe McDonald (1922)
 Sub off C 10618-1922 Gold - 9-23-68 - Elmer Davis