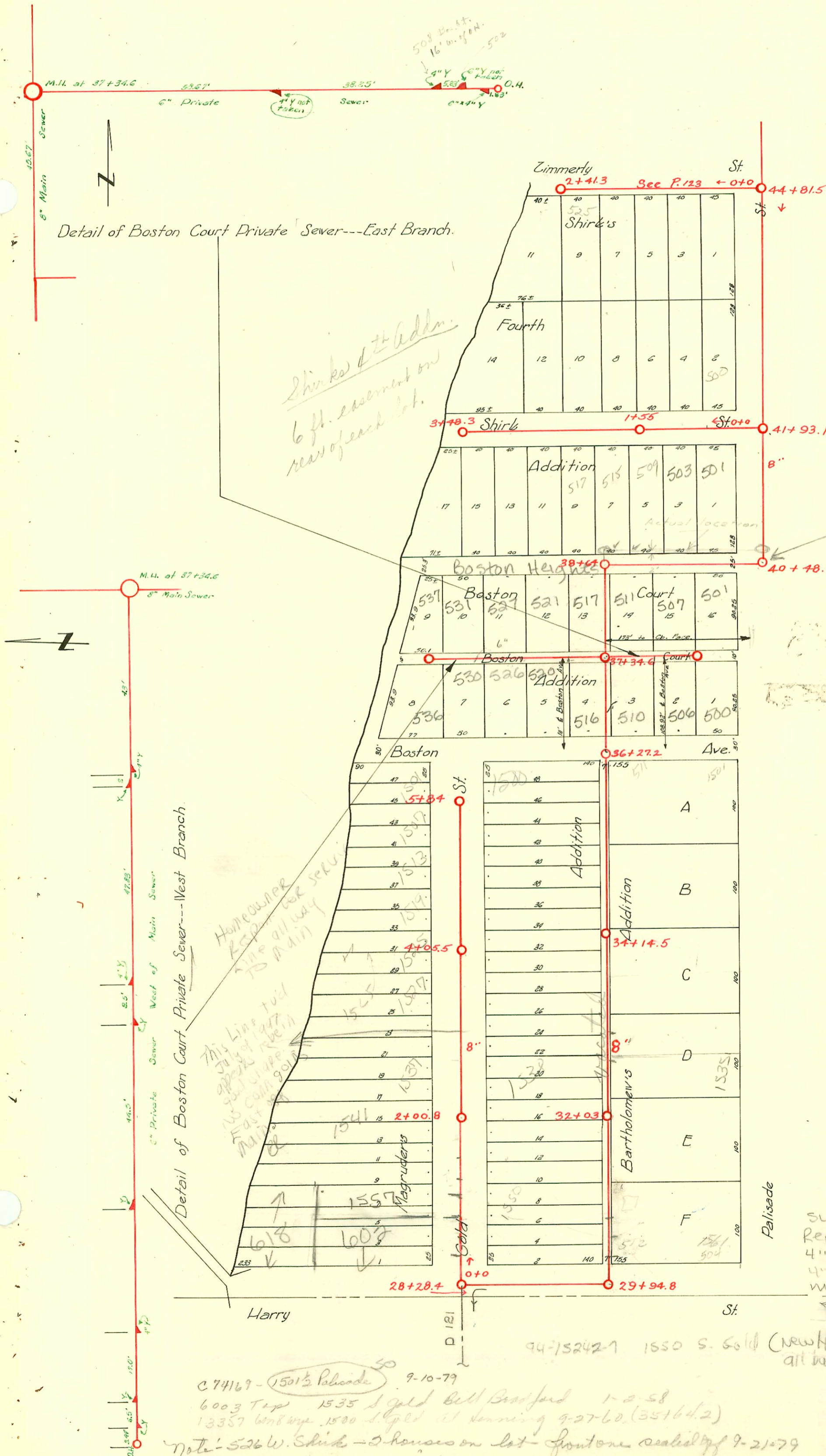


LAT. D - DIST. C - S.S. NO. 20
1920



*Shirk's 4th Addn.
6 ft. easement on
rear of each lot.*

*Homeowner
KSP...
This line will
be all way
to main
16' comp. pipe
11' 6" dia. 90' dia.*

SWR2002-00611 - Private SWR
Rep 514 W Boston - 31703 Reddi Rootr
4" PVC40 - Replaced lower 27' only
4" wye repaired 33.8' W of City
main MH 37+34.6 on private SWR
2V45, 4" wye co at upper end (15' from
house)

94-15242-1 1550 S. Gold (new house - used old comm. 4" wye
all but lower 2' with 4" ABS 90)

C 74169 - 1501 1/2 Palisade 9-10-79
6003 Tap 1535 S Gold Bill Bradford 1-2-58
13357 W Broadway 1500 S Gold at turning 9-27-60 (35164.2)
Note: 526 W. Shirk - 2 houses on lot frontage sealed off 9-21-79
21306 - 8/15/88 - 517 W. Boston Ct. - Repair - 6" wye not uncorked - tied in 18' from wye
Rep-2000-02236-1519 S Gold - Creekmore - 4" SCH40 - install clean out @ house

