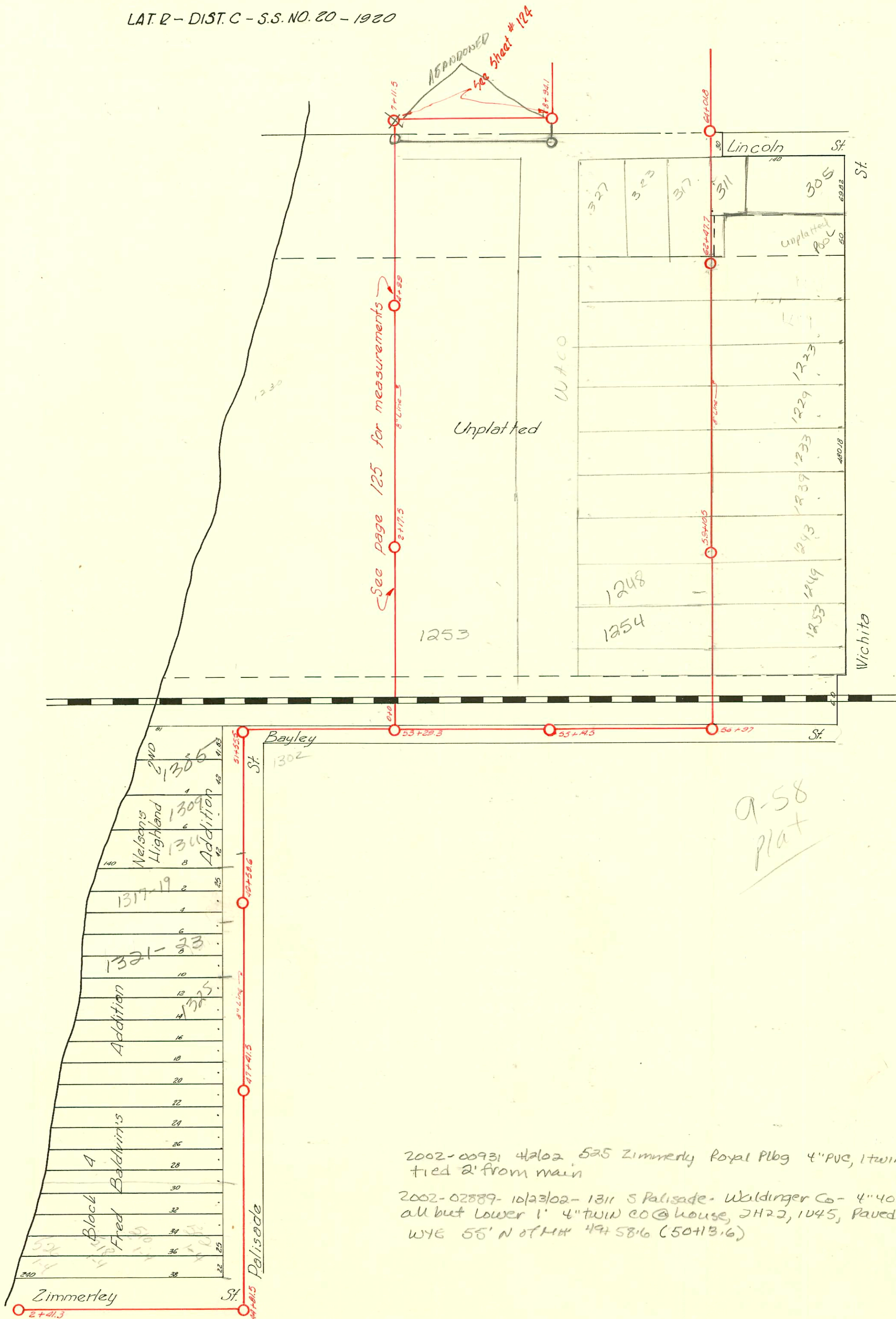


LAT. R - DIST. C - S.S. NO. 20 - 1920



D-123

CONSTRUCTION RECORD						SERVICE RECORD							
STATION	ELEVATION		Depth	MANHOLE	4-INCH "Y" BRANCHES		No. of Permit		House Number		DATE OF PERMITS		
	Ground	Grade			North West	South East	North West	South East	North West	South East	North West	South East	
44	106.56	99.82	6.74	+81.5			#3122		1359 S Palisade		4-15-81		
45	106.97	99.89	7.08		+75		197				2-14-24		
46	107.49	99.95	7.54		+00.5		#155		1339 Palisade		3-13-29		
					+26								
					+53								
					+78.3								
47	107.68	100.02	7.66	+41.5	+03.7		#552		1337 Palisade		3-25-24		
					+30		#654		1335 Palisade		3-4-27		
				47+41.5	+55								
					+81		#1146		1333 Palisade		5-19-24		
48	107.58	100.09	7.49		+06.6								
					+31.6		#226		1325 Palisade		3-17-25		
					+58								
					+84								
49	104.01	100.15	3.86	+58.6	+07		#42720		1319 Palisade		12-12-73		
					+3561.6		#775				7-10-29		
				MF 49+58.6	+62.5								
					+83								
50	103.40	100.21	3.19		+14		2002-02359		1311 R Palisade	see next	10-23-07		
				4" SCH 40 50# 13/16	+40		#1088				7-20-14		
				4" SCH 40 50# 13/16	+66.5		#332		1309 Palisade		8-19-29		
					+91.7								
					+16.7		#1339		1305 Palisade		4-23-47		
					+4.9								
51	106.58	100.27	6.315	+55.5									
52	107.74	100.34	7.40										
53	107.44	100.41	7.03	+29.3									
54	107.63	100.48	7.15										
55	107.56	100.55	7.01	14.5									
56	109.01±	100.61	8.40	+97									
57	109.11	100.69	8.42		+79	+76.5							
58	108.79	100.75	8.04		+02.5	+00							
					+27.5	+25	#2020		1253 Wichita		6-5-42		
					+54	+51.5	#879		1254 S. Waco		11-1-46		
					+78.3	+76.8	#113	#2021	1243 S. Waco	1249 Wichita	1217-96	2-6-47	6-5-42
59	108.60	100.81	7.79	+10.5	+06.5	+04	#20531		1226R Waco	1243 Wichita	4-22-68		
					+33.5	+31	#1187	#2022	1239 Wichita	1239 Wichita	5-30-29	6-5-42	
					+58.1	+55.6		#2023	1223 Wichita			6-5-42	
					+83.7	+81.2		#569	1223 Wichita			10-28-37	
60	108.65±	100.87	7.78		+10.1	+07.6	#2047		1233 Wichita			6-10-42	
					+34.1	+31.6	#314		1228 Waco		12-13-28		
					+58.5	+56	#2913		1220 Waco			4-9-46	
						+81	#2024		1229 S. Wichita			6-5-42	
61	109.66±	100.95	8.71		+03		#972		1234 Waco		9-8-28		
					+09.5	+07				1211 S. Wichita		3-25-91	
					+59.5	+57							
					+87.5	+85	#428	#368	1212 Waco	1201 S. Wichita	4-28-30	4-17-24	
62	109.26	101.01	8.25	+47.7	+12.5	+10	#725		1216 Waco		7-9-23		
					+39.5	+37							
					+63.5	+61				1207 S. Wichita		4-21-24	
					+92	+89.4							
63	109.0±	101.07	7.93		+16.5	+14	#734	#2442	317 W. Lincoln	311 W. Lincoln	12-5-41	10-29-24	
					+40.5	+38		#2441	1205 S. Wichita			10-29-24	
64	109.09±	101.13	7.96	+01.3									
0+0 OR	106.60	99.85	6.75	0+0	+95	+71.5				501 Zimmermanly		2-18-24	
	44+81.3				+97.5		#10			503 Zimmermanly		1-8-24	
1	106.45	100.05	6.40		+19								
					+42		#956					10-17-21	
					+64.8								
					+84.5		#1657					11-13-23	
2	105.25	100.25	5.00	+41.3	+07.2								
					+30.0		#396		521 Zimmermanly			3-5-24	
					+38.0		#1212	#00931	525 E. Zimmermanly	see next pg	4-7-24	6-77-24	

# 2812 - Tap-1200 S. Waco - Wichita Pkg. Co. - 10-7-42  
 # 333 - Tap-1302 Palisade - 4-4-50 - Frederick Pkg. Co. (Connected in Bayley St)  
 # 334 - Tap-1306 Palisade - 4-4-50 - Frederick Pkg. Co. (Connected in Bayley St)  
 # 2470 - Tap-323 W. Lincoln - Eugene Reynolds - 9-23-50  
 2001-00536 Tap - 050670 - (1317-17 Palisade) 8-6-75 (49+71.4) - A Henning 3/20/01  
 Tap - 050694 - 1321-23 Palisade - 8-6-75 (48+99.6)