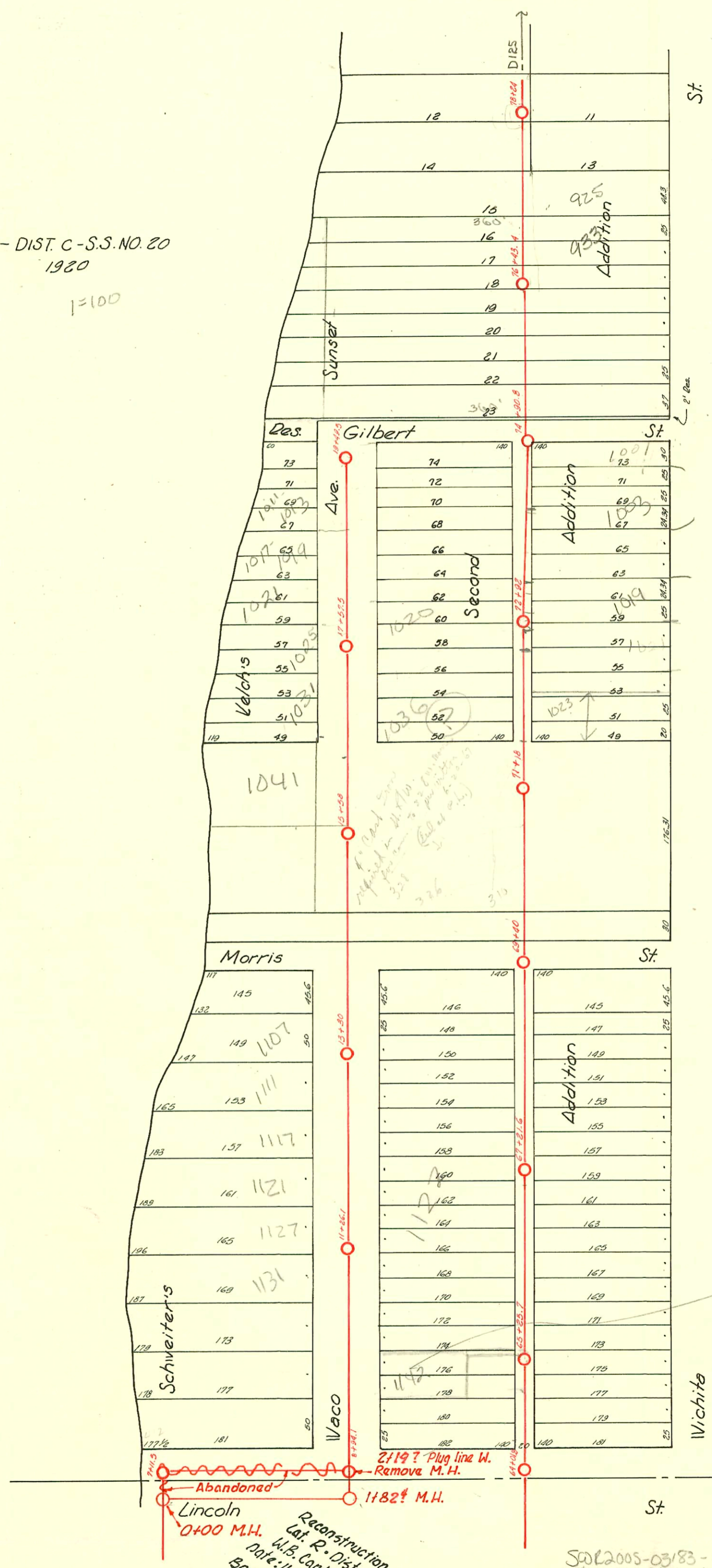


LAT. R. - DIST. C - S.S. NO. 20  
1920

1"=100'



Need PAU  
FORM + PER  
CALCULUSIT  
SEE E-MAIL  
ATTN

Reconstruction of a portion of  
Lat. R. - Dist. C - S.S. # 20  
W.B. Carter Const. Co., Inc.  
Date: 11-10-69 Proj. No. U-32  
Book: S.S. JK#8

SO 2005-03/83 - 12/23/05 314 W Lincoln - Repair  
4" Sch 40, (1) twin cts, (1) 22", wye repair, 54" N of M.H. Royal Plm

124

CONSTRUCTION RECORD

SERVICE RECORD

STATION	ELEVATION		Depth	MANHOLE	4-INCH "Y" BRANCHES		No. of Permit		House Number		DATE OF PERMITS	
	Ground	Grade			North West	South East	North West	South East	North West	South East	North West	South East
64	109.09 ±	101.13	7.96	64	+30.5	+28	# 658		1146 S. Waco	1127 S. Wichita	4-2-24	
					+55.5	+53		# 882		1141 S. Wichita		4-18-24
					+81.5	+79	# 2808	# 487	1142 S. Waco	1141 S. Wichita	10-26-40	5-11-22
65	108.28	101.19	7.09	65	+26.5	+04			1138 S. Waco		9-18-24	
					+31.5	+29	# 1877					
					+56.5	+54			1134 S. Waco		3-23-39	
					+82	+79.5	# 1406			1131 S. Wichita		9-20-21
66	104.72	101.26	3.46	66	+06.5	+04		# 363				
					+31.7	+29.2						
					+57.3	+52.3						
					+82.5	+80						
					+96							
67	106.02	101.32	4.70	67	+09.9	+21.6	# 2023		1122 B S. Waco		3-6-24	
					+28		# 298				4-10-22	
					+37.9	+35.4	# 1787		1116 S. Waco		8-21-39	
					+62	+59.5						
					+87	+94						
					+96.5		# 1058		1110 S. Waco		7-18-23	
68	105.60	101.39	4.21	68	+21.5	+11.3			1111 S. Wichita		7-2-67	
					+40	+37.5	# 1222	# 1034	1106 S. Waco	1107 S. Wichita	11-23-38	8-18-22
					+65.5	+63						
					+90.5	+88	# 1876		1102 S. Waco		9-18-24	
					+15.5	+13		# 533	1101 S. Wichita		6-21-21	
					+39.8	+37.3						
					+52.5	+50						
70	104.51	101.52	2.99	70	+31.5	+29	# 2003	# 587	1047 S. Wichita		4-23-23	
					+58	+55.5	# 1715	# 1984	326 S. Waco	1045 S. Wichita	7-2-63	7-23-52
					+83.5	+81	# 1372		328 S. Waco	1045 S. Wichita	9-2-41	6-26-67
					+114		# 1144		W. Morris	W. Morris	12-20-46	
71	104.75	101.60	3.15	71	+08.5	+06	# 333		310 W. Morris		4-26-26	
					+35.5	+33						
					+60.8	+58.5	# 754		1023 S. Wichita		4-2-46	3-17-38
					+86.5	+84	# 497		1003 S. Wichita		7-29-48	
72	103.96 ±	101.67	2.29	72	+12.2	+09.7						
					+36.2	+33.7						
					+61.9	+59.4		# 1142	1019 S. Wichita		12-28-27	
					+85.5	+83	# 352	# 476	1024 S. Waco	1019 S. Wichita	4-8-25	3-12-24
73	103.55	101.73	1.82	73	+11.2	+08.7	# 1622	# 650	1036 S. Waco	1029 S. Wichita	4-14-48	3-25-63
					+36.2	+33.7	# 2057		1014 S. Waco		6-29-51	8-23-47
					+62.3	+59.8	# 514		1009 S. Wichita		9-12-55	
					+86.5	+84	# 6223					
74	104.26 ±	101.79	2.47	74	+12.1	+09.6		# 934	1003 S. Wichita		10-31-27	
					+37.9	+35.4						
					+62.9	+60.4						
75	104.59	101.86	2.73	75	+06.8	+04.3						
					+42.1	+39.6						
					+57.5	+55						
					+82.5	+80						
76	106.35	101.93	4.42	76	+11	+08.5						
					+36.0	+33.5						
					+61.5	+59						
					+86	+83.5		# 2001	933 S. Wichita		9-20-01	
77	105.23	102.00	3.23	77	+11.7	+09.2	# 1188	02361			10-29-25	
					+36.3	+33.8	# 407		925 S. Wichita		5-15-00	
					+61.5	+59					3-6-24	
					+89.5	+87		# 597	921 S. Wichita		6-5-28	
78	104.43	102.07	2.36	78	+13.5	+11		# 408	909 S. Wichita		3-6-24	
8	104.19	101.37	2.82	8	+20							
9	104.41	101.48	2.93	9	+46		# 241				3-27-22	
					+71.8		# 2135		1141 S. Waco		4-10-48	
					+97							
10	104.48	101.56	2.92	10	+23		# 1405		1137 S. Waco		3-23-29	
					+49			# 646	1135 S. Wichita		6-12-22	
					+75.3							
11	103.82	101.64	2.18	11	+01		# 2566		1127 S. Waco		8-12-40	
					+28.8							
					+55							
					+80		# 2001	# 189	1125 S. Wichita		3-16-22	
12	103.88	101.72	2.16	12	+06		# 2886		1121 S. Waco		11-20-49	
					+31.3							

#19 10205 Waco 3-29-33

5599 Tap 1077 S Waco 11-17-57 McCoy  
 7408 747 4036 Waco 11-17-57 McCoy  
 #16822-1036 S Waco - Kenigsparr May 3-25-63 by (13+628) - f... blog.

CONSTRUCTION RECORD						SERVICE RECORD						
STATION	ELEVATION		Depth	MANHOLE	4-INCH "Y" BRANCHES		No. of Permit		House Number		DATE OF PERMITS	
	Ground	Grade			North West	South East	North West	South East	North West	South East	North West	South East
13	104.48	101.80	2.68	13+30	+57.3 +49.2 +12 +38 +64.8 +90.3		# 8776 # 1010 # 1387		111 S.R Waco 103 S.Waco		6-8-44 3-15-22 3-23-31	
14	104.79	101.83	2.91	14+08	+65 +88 +40.8		# 128		103 Waco		3-16-22	
15	104.74	101.96	2.78	15+58	+65 +88 +14		# 3451 # 4087		1047 S.Waco 1045 S.Waco		5-8-41 8-13-41	
16	104.21	102.04	2.17	16+16.5	+61.6 +91 +41.5 +67.8 +93	15+61	# 1812	# 3724 # 235	1041 R S.Waco	328 Waco	10-29-03 6-11-46 3-19-48	
17	103.46	102.12	1.34	17+93	+45.4 +57.5 +67.3 +94		# 426 # 991		1025 R S.Waco 1021 S.Waco		4-22-47 7-22-48 9-24-48	
18	104.28	102.20	2.08	18+21.5	+47.8 +63.5 +8.9		# 1219		1019 S.Waco		2-25-53	
19	103.80	102.28	1.52	19+49.5	+42.1 +44		# 724 # 8129 # 1396		1011 Waco 1003 S.Waco 1001 S.Waco		5-9-54 5-11-53 2-4-52	

S/D 2003-01750 7/2/03 326 W Morris McCullough Exc - 4" clay tile line sealed off 60'S of MH 7118 (10+58) and 2' from main - Dirt alley cut

Reconstruction of a portion of Lat. R - Dist. C - S.S. # 20

0+00 100.52 0+00 Construct M.H. over exist. 8" Line.  
 1+00 100.67 0+98<sup>2</sup> Reconnected existing service  
 1+82<sup>4</sup>  
 2+00  
 2+19<sup>2</sup> 100.85 Remove Exist. M.H. & Connect to Exist. 8" Line North.

#C 14793 Seal off 1147 S. Waco - Ark valley lower down 7-8-69

# 2262 - Tapped at 64+26.8 - 1146 S. Waco - 4-25-40 - Chester Davidson  
 # 2194 - Private Line - 1023 S. Wichita - 7-1-42 - Burgan Pkg. Co.  
 # 1234 - Tap - 412 W. Lincoln - 1-9-47 - E. La Fay  
 # 892 - Tap - 412 W. Lincoln - 10-9-47 - Baker Pkg. Co.  
 # 1929 - Tap - 147 S. Waco - 4-7-48 - Baker Pkg. Co.  
 # 6165 - 1029 S. Wichita - 10-19-51 - Bolmain Pkg. Co.  
 # 56 - Tap - 51 S. M.H. 65+25.7 - 1-28-26  
 # 236 - Tap - 937 S. Wichita - 3-28-56 - Handgapan  
 # 1077 - on Bay + Trailer - 1021 S. Wichita - Harry Mann - 6-11-56  
 # 1028 - Trailer - private line on main - Harry Mann - 6-11-56  
 5599 - Tap - 1120 S. Waco - Rymc Co. - 11-12-57  
 # 7201 - private line on main - trailers - 509 S. Wichita - 6-13-58  
 7598 - Tap - 1008 S. Waco - Roy Mc Coy - 7-30-54