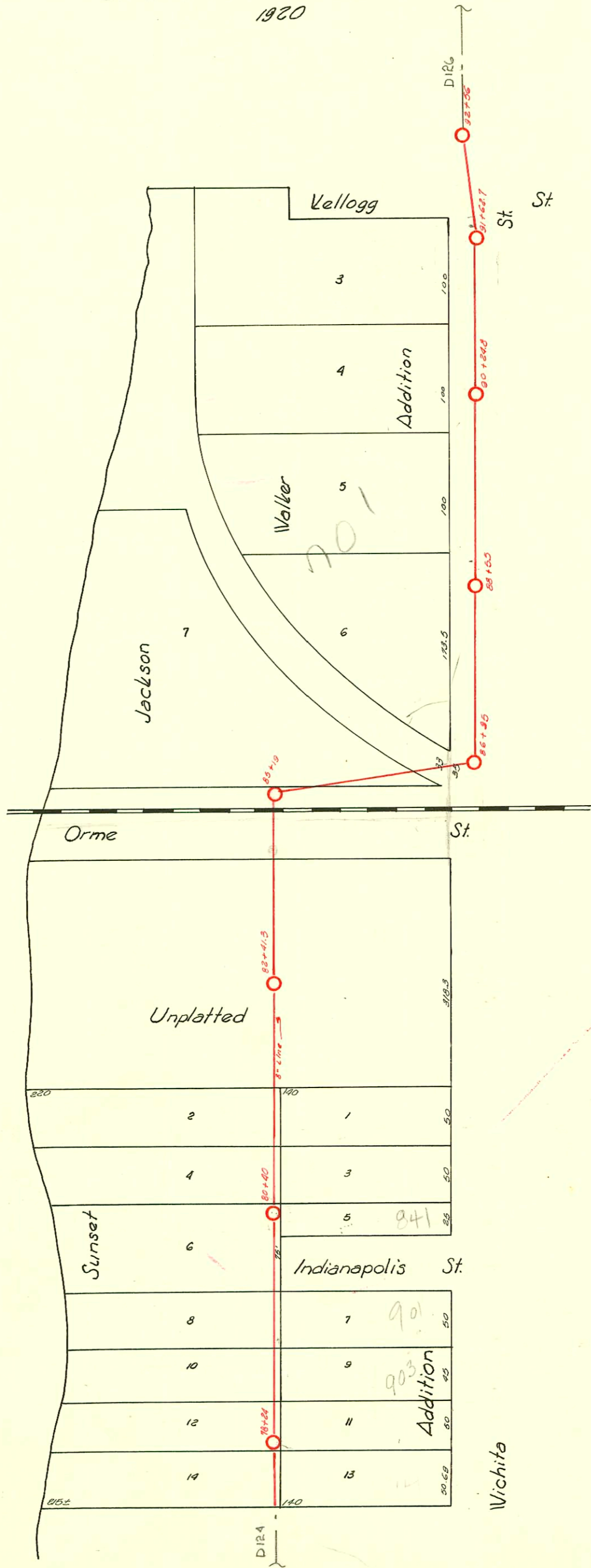


LAT. R - DIST. C - S.S. NO. 20
1920



* 16205- 725 Wichita - 5-2-86 (Inspector observed 152' East of private main)

D-125

CONSTRUCTION RECORD

SERVICE RECORD

STATION	ELEVATION		Depth	MANHOLE	4-INCH "Y" BRANCHES		No. of Permit		House Number		DATE OF PERMITS	
	Ground	Grade			North West	South East	North West	South East	North West	South East	North West	South East
78	104.43	102.07	8.36	+24								
					+38.5	+36						
					+63.5	+61						
					+89.5	+87						
79	104.34	102.14	2.20		+15.5	+13						
					+40.7	+38.2						
					+87	+89.3	#562		400 W. Indianapolis		10-26-37	
80	105.25	102.20	3.05	+40								
					+109							
					+35.5	+33	#576		839 Wichita		7-22-20	
					+59.5	+57						
					+85.5	+83	#867		825 Wichita		4-17-24	
81	104.28	102.26	2.02		+11.9	+9.4	#1910		823 Wichita		10-18-39	
					+37.8	+35.3						
					+62.9	+60.4						
					+89.2	+86.7						
82	104.21	102.33	1.88	+41.3								
					+11.3	+8.8						
					+36.9	+34.4						
					+62.1	+59.6						
					+86.5	+84						
83	105.43	102.40	3.03		+12.9	+10.4	#87		801 Wichita		4-27-35	
					+39.5	+37						
					+63.8	+61.3						
					+88.9	+86.4	#750		803 Wichita		5-17-23	
84	105.09	102.47	2.62									
					+14	+11.5						
85	109.73	102.54	7.19	+19			97-110897		701 W. W. Wichita		7-3-97	
					+45							
					+68							
86	109.42	102.61	6.81	84 95								
87	110.70	102.63	8.02		+37							
					+63							
					+89							
88	106.35	102.77	3.58	84 55	+104.5							
					+40							
					+65.5		#1974		725 Wichita		4-2-45	
					+90.5							
89	106.16	102.83	3.33		+16.2							
					+42							
					+68.7		#16205		705 Wichita		5-2-26	
					+83.3							
90	106.32	102.90	3.42	90 24.8 90	+18.4		#1792		785 Wichita		10-30-44	
					+44		#1311		709 Wichita		9-5-23	
					+71.2							
					+97							
91	106.34	102.97	3.37	+62.7	+24							
					+50.7		#1302					9-4-23
					+78							
92	106.32	103.04	3.28	+56	+28							
					+60							
0+0	107.44	100.43	7.01		+80.5	+78	#177					
1	102.90	100.53	2.37		+07.5	+05	#2003		1260 Palisade		10-21-98	
					+32.5	+30	#95		1253 R Waco		4-16-01	
					+62.5	+60	#265		1252 Palisade		10-3-41	
					+83	+80.5	#578		1245 Palisade	1247 Waco	8-8-27	11-14-41
2	105.51	100.65	4.86	+17.5	+11	+8.5	#58		1240 Palisade	1239 Waco	9-10-41	8-23-27
					+34	+31.5						
					+85.5	+83	#708		1236 Palisade		12-15-41	
3	102.79	100.77	2.02		+11.5	+9	#771		1235 Waco		1-16-28	
					+37.5	+35	#32		1230 Waco		9-25-80	
					+62.5	+60	#1360		1237 Palisade	1237 Waco	11-1-27	5-29-41
					+88	+85.5	#3555					
4	103.38	100.89	2.49	+9.9	+14.5	+12	#3554		1228 Palisade	1223 Waco	5-29-41	11-19-30
					+38.7	+36.2	#3716		1218 Palisade		6-24-41	
					+65.5	+63						
					+89.5	+87	#1102		1214 Waco		12-14-27	
5	103.35	101.01	2.34		+10.5	+8	#3553		1214 Palisade		5-29-41	
					+35.3	+32.8	#1619		1209 Waco		11-12-29	
					+63.5	+61	#2347		407 W. Lincoln		10-22-45	
					+89.5	+87	#81		1204 Palisade		9-12-41	
6	104.18	101.13	3.05		+15.5	+13	#3976		1204 Palisade		8-8-41	11-13-41
					+41.5	+39						
					+66.5	+64						

#271 - Tap - 803 S. Wichita - 3-23-30 - Simmons Pibg. Co.
 #83 - Tap - 801 S. Wichita - 4-27-35 - W.W. Pray
 #249 - Tap - 801 S. Wichita - 5-25-37 - W.W. Pray
 #459 - Tap - 801 S. Wichita - 9-16-37 - W.W. Pray
 #2481 - Tap - 815 S. Wichita - 7-5-40 - W.W. Pray
 #663 - Tap - 749 S. Wichita - 11-25-41 - Pray Pibg.
 #2425 - Tap - 801 South Wichita - Pray Bros. - 10-29-56

#1213 Tap 901 S. Wichita Al Henning 1-11-60
 C39670 SO 841 S. Wichita Al Henning 6-19-73
 #92-779-7 1-21-92 701 S. Wichita (new add)