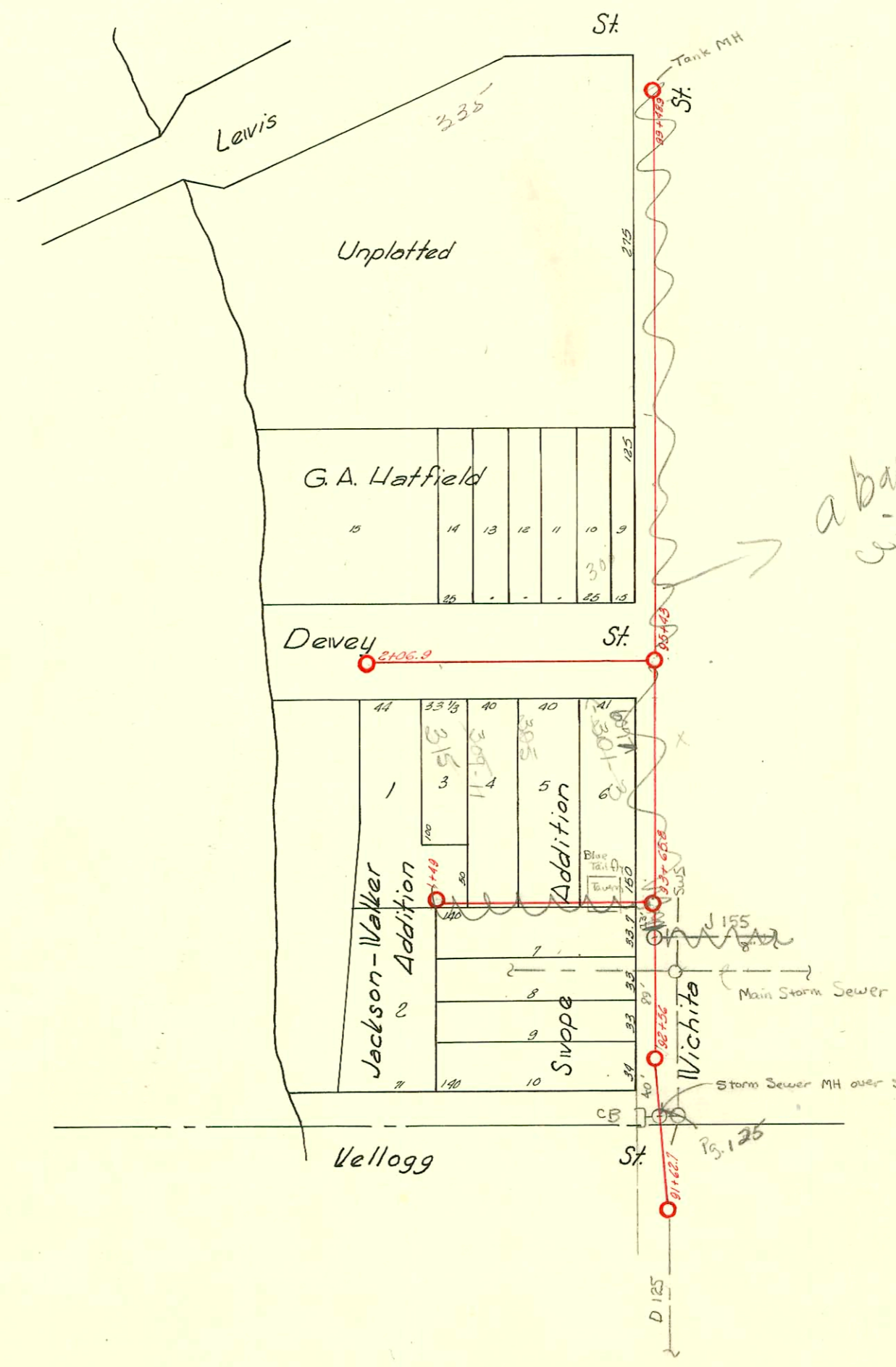


LAT. 2- DIST. C - S.S. NO. 20



*a bandoned with gander MTR project*

Storm Sewer MH over sanitary line - 8" CIP through MH.  
R.S. 10-24-72

SCALE 1" = 100'

D-126

Form 41-(54) 12-54

CONSTRUCTION RECORD						SERVICE RECORD						
STATION	ELEVATION		Depth	MANHOLE	4-INCH "Y" BRANCHES		No. of Permit		House Number		DATE OF PERMITS	
	Ground	Grade			North West	South East	North West	South East	North West	South East	North West	South East
92	106.32	103.04	3.28	+56	+83.8							
93	106.55	103.10	3.45	+65.8								
94	106.80	103.17	3.63		95+54.6		6589		335 W Lewis		9-21-82	
95	106.96	103.24	3.72	+43			#11565		300 W Dewey		9-23-59	
96	106.64	103.32	3.32	96 +20			606		300 W Dewey		6-3-22	
				+95.8			#					
97	107.37	103.39	3.98	77 +20.5			1556		525 S. Wichita		11-16-22	
				+42.8								
				+66.8								
				+90.8								
98	108.09	103.48	4.61		+14.8							
					+40.8							
					+64.7							
					+91							
99	108.75	103.56	5.19	99 +48.9	+16		#192		311 W. Lewis		3-22-27	
					+44.5		#12546		303 W. Lewis		6-15-67	
							#193		W. Lewis		3-22-27	
0+0 OR 95 + 43	106.76	103.30	3.46	0+0	+50		#		304 W. DEWEY		11-27-22	
					+71.3		1611		308 W. DEWEY		11-24-22	
1	107.03	103.40	3.63		+00.0		#604					
					+28.9	+31.4						
					+46							
					+73	+75.5						
					+90		#1145		316 W. Dewey		9-5-22	
2	107.26	103.50	3.76	+06.9								
0+0 OR 93 + 65.8	103.14	103.14	3.45	0+0	+18		#6540		303-1 W. Dewey		9-12-82	
					+43		30		W. Dewey		1-31-21	
					+68	+70.5	28743-7		607 W. Dewey		11-8-85	
					+94		7867		300 W. Dewey		9-13-82	
							#580		311 W. Dewey		7-23-20	
							#186		311 W. Dewey		3-16-22	
1	103.24			+49	+20	+22.5	#6345		315 W. Dewey		5-22-22	
							542		W. Dewey			

SUR 2005-00640 3/18/06 605 S. Wichita (Grand Mountain) Central Mch

#6590 - 335 W. Lewis - 9-21-82 - Wilfred Brake (99+31.9) (17' 3" MH)

#630 - Tap - 625 S.W. - 6-8-22  
 #639 - Tap - 617 S.W. - 6-9-22  
 #700 - Tap - 510 S. Wichita - 4-22-30 - D.H. Anderson  
 #1350 - Tap - 527 S. Wichita - 3-4-47 - Baker Pllg. Co.  
 #1576 - Tap - (in Wichita St.) - 611 S. Wichita - 2-9-48 - D.E. Vaughn  
 11060 Tap Cherry Key 310 W Dewey 8-6-59 - 0+92  
 93-28741-7 11-8-93 (310 W Dewey) Voided  
 93-29083-7 11/10/13 303 W Dewey (310 W Dewey) - 90 ft West of MH (90.0) 4" Clay w/lin 2 ft off man