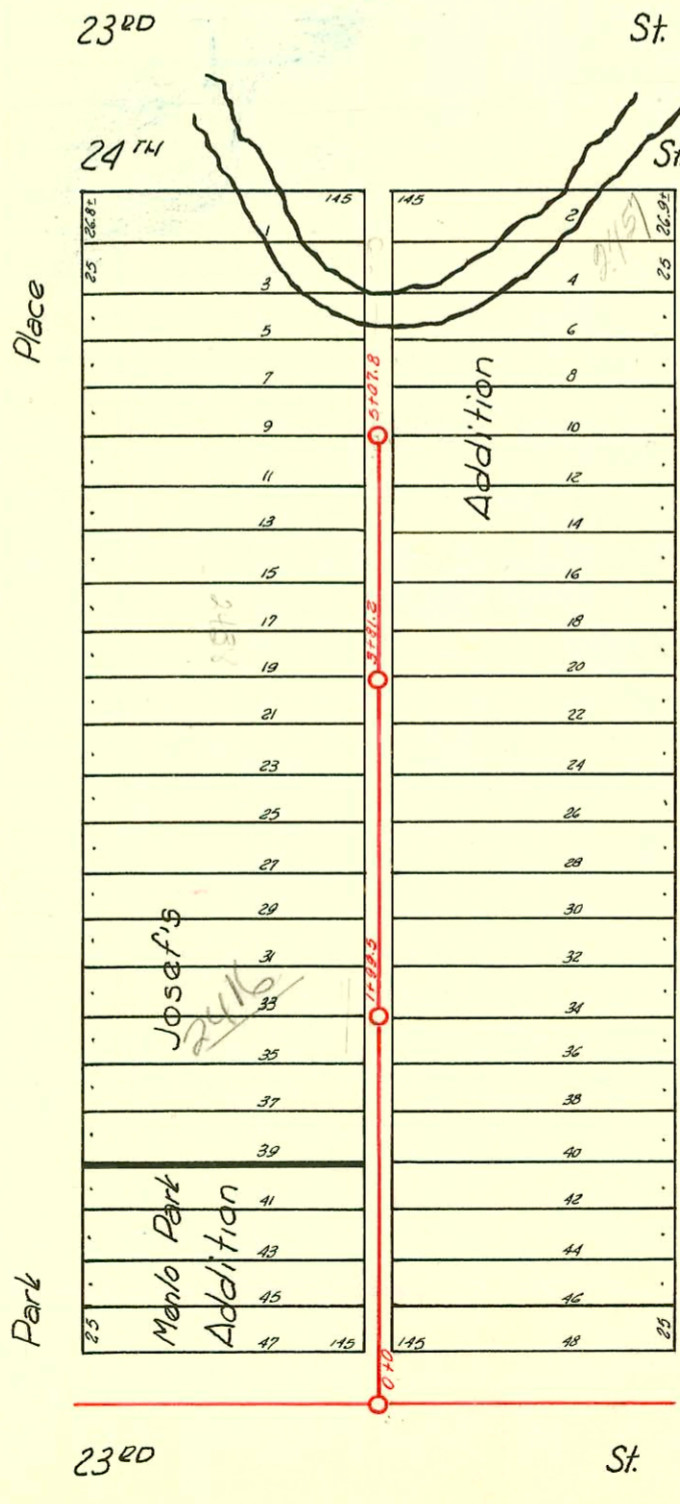
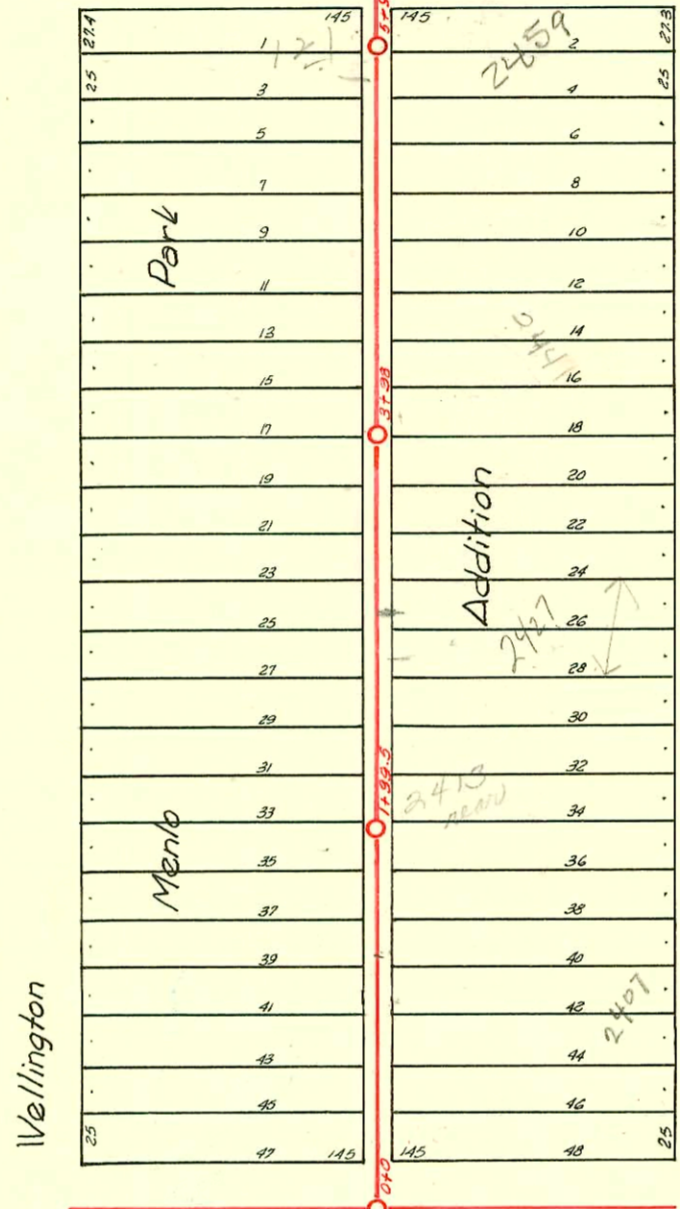
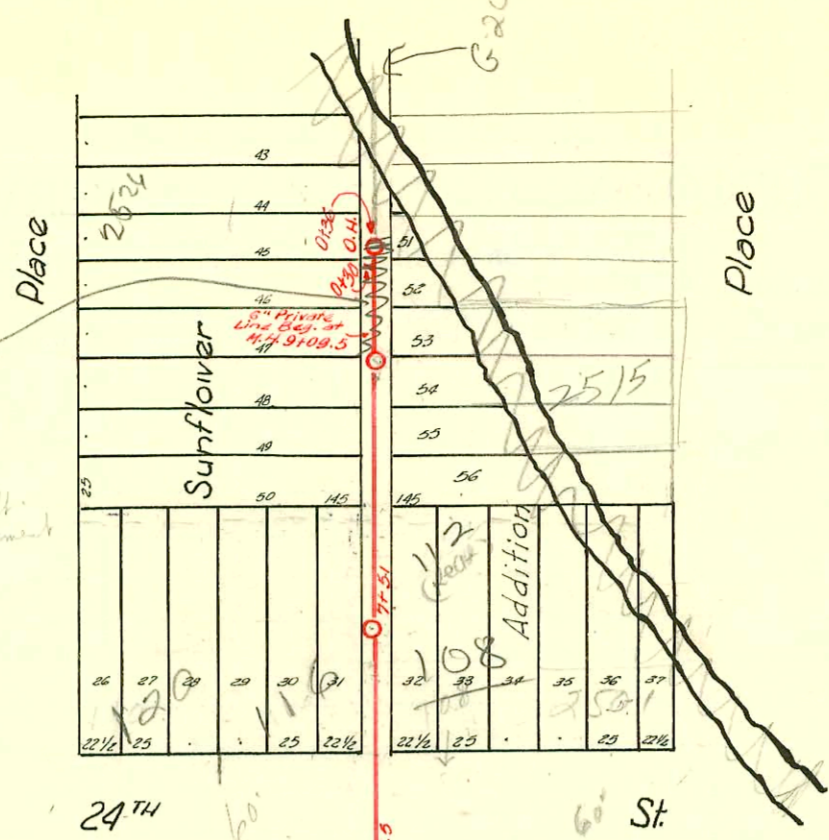


Refer to
G-202
for cont. of
line

9-34



CONSTRUCTION RECORD							SERVICE RECORD						
STATION	ELEVATION		Depth	MANHOLE	4-INCH "Y" BRANCHES		No. of Permit		House Number		DATE OF PERMITS		
	Ground	Grade			North West	South East	North West	South East	North West	South East	North West	South East	
0+0	123.55	116.18	7.37	0+0									
					+32	+29.5			2404	2401			
					+57.5	+55	#1204	#1926	Wellington Pl.	Park Pl.	5-26-24	8-25-24	
					+83	+80.5	#131	#131	Wellington Pl.	Park Pl.	6-5-24	3-14-75	
1	123.06	116.38	6.68	1+99.5	+108.5	+106.0	#4864	#297	Wellington Pl.	Park Pl.	7-13-25	5-21-31	
					+134.5	+132	#2160	#2160	Wellington Pl.	Park Pl.	3-14-75	9-22-24	
					+159	+156.5	#2297	#2297	Park Pl.	Park Pl.		5-8-40	
					+185	+182.5			2435	Park Pl.		8-12-24	
2	123.24	116.58	6.66		+108	+105.5	#1841	#1841	2422	Park Pl.	10-24-51		
					+124.5	+122	#6233	#6233	Wellington Pl.	Park Pl.		9-22-24	
					+160	+157.5	#2161	#2161	Park Pl.	Park Pl.			
					+185.5	+183	#4846	#96-4818-7	2430	2427	Park Pl.	6-4-51	
3	123.38	116.78	6.60	1+99.5	+115	+109.2	#109	#109	Wellington	Park Pl.	4-9-96	8-27-24	
					+136.5	+134			2431	Park Pl.		10-30-24	
					+165	+162.5	#2447	#2447	2436	Park Pl.		6-26-50	
4	123.74	116.98	6.76		+106	+103.5	#1418	#1418	Wellington			7-20-49	
					+132.5	+130	#930	#930	Wellington	2439	Park Pl.	9-27-24	
					+157.5	+155	#2199	#2199	2444	Park Pl.	5-3-50	10-23-24	
5	124.62	117.18	6.44	1+99.5	+109.5	+107	#347	#3393	Wellington	2445	Park Pl.	1-12-54	
					+135.5	+133	#1382	#368	Wellington	2445	Park Pl.	4-13-25	
					+161.5	+159	#159	#159	Wellington	2445	Park Pl.	11-2-79	
					+188	+185.5	#102	#1065	121	Market	Park Pl.	4-26-49	
6	125.23	117.38	7.85		+115.5	+113				116 W.		7-7-70	
7	123.69	117.58	6.11	7+151						2444		8-22-73	
					+138.5	+136	#19978	#19978		108 W.		9-29-88	
8	123.84	117.78	6.06		+107.5	+105	#21594	#21594		108 W.		10-31-75	
					+135.5	+133	#52217	#52217		2513	Park Pl.	10-20-48	
					+159	+156.5	#1260	#1260	2522	Wellington		9-5-44	
9	124.57	117.98	6.59	109.5	+109.5	+105	#1720	#1720	Wellington			8-7-24	
0+0	123.29	116.88	6.41	0+0								12-3-28	
					+160.5	+158	#1805	#1269	2402	2401	Park Pl.	N. Mkt.	8-7-24
					+187.5	+185	#1804	#1804	2408	2408	Park Pl.	23 W.	8-7-24
1	123.65	117.08	6.57	1+99.5								12-16-73	
					+114.5	+112			2412	Park Pl.		8-18-24	
					+138.5	+136	#1880	#1880					
					+164.5	+162	#1874	#2210	2416	Park Pl.		4-28-00	
2	124.67	117.28	7.29		+109.5	+107	#1874	#2210	2422	2417	Park Pl.	N. Mkt.	8-16-24
					+142.5	+140	#2175	#2175	2426	N. Mkt.		9-24-24	
					+168.5	+166	#2291	#2291	2421	N. Mkt.		10-11-24	
					+195.5	+193	#1944	#95	2430	Park Pl.		8-27-24	
3	124.79	117.48	7.31	1+81.2								9-15-41	
					+118.5	+116	#2327	#2327	2436	Park Pl.		10-15-24	
					+145.5	+143	#2095	#2095	2438	Park Pl.		9-15-24	
					+171	+168.5	#2206	#2206	2440	Park Pl.		9-29-24	
4	125.27	117.68	7.59		+196.5	+194	#106	#106	2457	N. Mkt.		9-17-41	
					+121.5	+119							
					+147.5	+145							
					+172	+169.5							
5	125.93	117.88	8.05	1+07.8									
					+184	+183							

1/2 5502 - 2438 W. Park Place 3-30-82 [unclear] (3+42.8)(163.0's)

Dep- C48654-2410 Wellington Pl. - 3-14-75 - J. Aultman

- #6144 - Setting Wye - 2410 Wellington Place - 8-12-53 - D. LaFoy
- #3027 - Tap - 2448 Park Pl. - 10-28-56 - E. LaFoy
- #107 - Tap - 2425 N. Market - 9-17-41 - C.A. Preston
- #109 - Private Line - 2417 N. Market - 9-17-41 - D. LaFoy
- #1578 - Tap - 108 W. 23rd - 4-23-32 - Fredericka
- #1255 - Tap - 2526 Wellington Pl. - N. Shepherd - 11-10-43
- #6661 - Trailer - LaFoy - 10-12-55 - Private Line
- #739 - Tap at 74 23.5 - 108 W. 23rd - 9-10-47 - A.E. Vaughn
- #1392 - Tap - 120 W. 24th - 10-5-49 - A.E. Vaughn
- C 29422 - 908 W. 102nd St No. 12-1-31 - J.C. Lewis (7+18.5)
- C 70315 - 2423 Park Pl. - 2-28-79 - R.A. Campbell - repairs (2+56.5)
- #11885 - Tap - 2413 Park Pl. near D.A. Smith Bldg. - 11-23-59 (2+11.5)
- #12758 - Tap - 2509 Park Pl. LaFoy Bldg. - 5-12-60 (8+85)
- #12759 - Tap - 2509 Park Pl. LaFoy Bldg. - 5-12-60 (8+10.5)
- 9/21/88 - 108 W 24th (1082) changed to 112 W. 24th W3