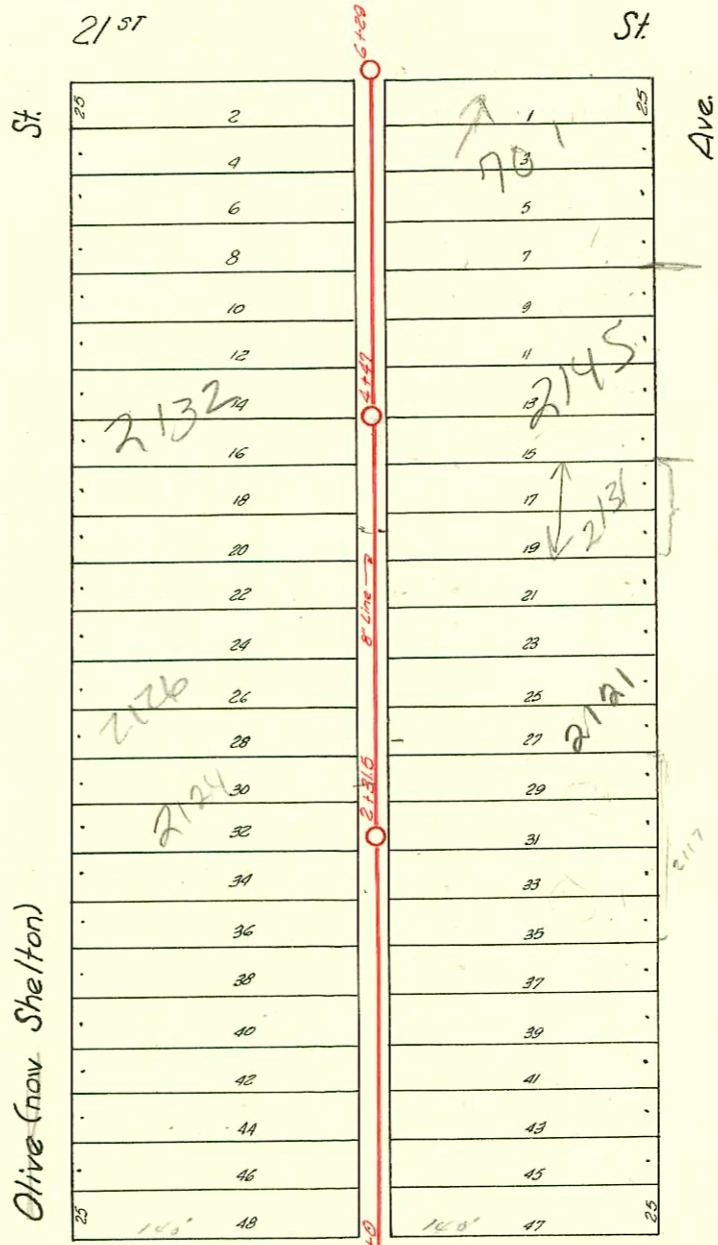


SEC. A - SUB-MAIN D-1919
LAT. H - DIST. D-1920
55-NO. 20



20TH see page 131 ST.

Reserve "B"

M.H. 81
ST see page 131

9045

M.H. 146.5 City Maintenance
M.H. Station 146.5 to
M.H. Station 0700 ± P.
2-5-2272

under bldg
M.H. 2+28

to City Maint ± of
M.H. 146.5

Private Line beginning at existing M.H. 1+26 running
West 58 1/2° to O.H. with Y South 40° West of M.H.

O.H.
M.H. 1+26

Church

2007

Arkansas

CONSTRUCTION RECORD

SERVICE RECORD

STATION	ELEVATION		Depth	MANHOLE	4-INCH "Y" BRANCHES		No. of Permit		House Number		DATE OF PERMITS	
	Ground	Grade			North West	South East	North West	South East	North West	South East	North West	South East
0+0	122.11	116.05	6.06	0+0	+69.5	+67	#462	#9782	620	2101 N/6	4-30-29	11-29-83
					+95.5	+93	#3878	#1973	2106 Shelton	N. Arkansas	3-14-55	11-13-39
1	123.07	116.05	6.92		+23.5	+21		#2267		2111 N. Arkansas		4-27-40
					+48.5	+46						
					+71.5	+69						
					+98.5	+96	#869		2116 Olive		7-15-29	
2	123.93	116.25	7.68	+31.5	+23.5	+21	#875	#1732	2124 Olive	2115 Arkansas	9-18-30	12-21-22
					+56.5	+54				2121 Arkansas		10-24-96
					+82.5	+80						
3	124.05	116.35	7.70		+109	+106.5	#301	#1637	2126 Olive	2129 N. Arkansas	4-3-30	11-23-23
					+17							
					+35.5	+33						
					+62.5	+60	#1424	#95-2757	2125 Olive		10-5-29	
					+89.5	+86	#1425	#1701	2130 Olive	2131 R N. Arkansas	10-5-29	7-17-95
4	123.27	116.45	6.82	+47	+15	+12.5	#1549	#4106	2152 Olive	2145 Arkansas	10-29-29	7-26-67
					+39.5	+37				2143 N. Arkansas	10-29-29	6-28-61
					+69.5	+67						
					+93.5	+91	#1550		2134 Olive		10-29-29	
5	122.61	116.55	6.06		+18.5	+16	#1483	#1336	2158 Shelton	2139, 2147 N. Arkansas	9-1-49	10-12-66
					+44.5	+42				2157 N. Arkansas	see below	10-1-54
					+71.5	+69				2145 N. Arkansas	9-1-49	10-18-23
					+97.5	+95						
6	121.43	116.65	4.78	+29	+19.5	+17						
0+0	122.60±	116.05	6.55	0+0	+12.5	+10				2045 N. Arkansas		5-21-68
					+68.5	+66				2045 N. Arkansas		5-4-20
					+94.5	+92						
1	122.17	116.15	6.02		+19.5	+17						
					+44.5	+42						
					+69.5	+67						
					+96.5	+94						
2	121.75	116.25	5.50	+14	+22.5	+20	#4490	#4491	2023 Arkansas	2023 Arkansas	4-27-55	4-27-55
					+46.5	+44		#4492		2023 Arkansas		4-27-55
					+72.5	+70						
					+97.9	+95.4		#4493		2023 Arkansas		4-27-55
3	122.09	116.35	5.74		+23.9	+21.4						
					+48.5	+46						
					+73.5	+71						
					+97.5							
4	121.90	116.45	5.45	+26	+40.0							
					+34.5	+32						
					+60.5	+58						
					+87.5	+85						
5	121.90	116.55	5.35		+12.5	+10						
						+44						
					+70.5	+68						
					+96.5	+94						
6	122.80	116.65	6.15	+43	+26.5	+24						

was used
corner to sewer
11-24-53
Capped into sewer
Station "22"

95

9718 (2101 N. Arkansas) 11-28-83 - Now white - was conn into steam sewer on south side of Prop.

#391 - Tap - 212 Shelton - 5-11-54 - C.G. Coleman
 #10 - Tap - 615 West 20th - 1-6-31
 #1036 - Tap into sewer in 20th St. - 602 West 20th - 8-31-43 - Wichita Pkg. Co.
 #1023 - Tap at 7th West 21st - 10-28-47 - Coleman Pkg. Co. 12-20-99-5-98 - seal off w/ concrete
 #1660 - Tap - 2143 Arkansas - 2-25-48 - W.D. Zaharick
 #1735 - Tap into M.H. 4+26 - 2011 Arkansas - 9-20-49 - Joe's Pkg. Co.
 #2366 - Tap into M.H. 4+26 - 2011 Arkansas - 11-8-49 - Joe's Pkg. Co.
 #12399 Tap 2007 N. Arkansas Kennedy Pkg. 3-29-60 (4+89)
 #12791 Tap 2007 N. Arkansas Kennedy Pkg. 5-23-60 (4+94)

93-1422-7 1-27-93 2100 N Shelton - Budget
 92-43769-7 - 12-1-92 - 2145 N Arkansas - Seal off +
 10 Ft South of M.H. Behind Building 24+37.0
 4" Sch 40 P.V.C.
 95-833-7 1-18-95 701 W 21st - Morris - (4" Sch 40) wye repair

4" PVC 40 Hed
back into existing
6" Clay tile