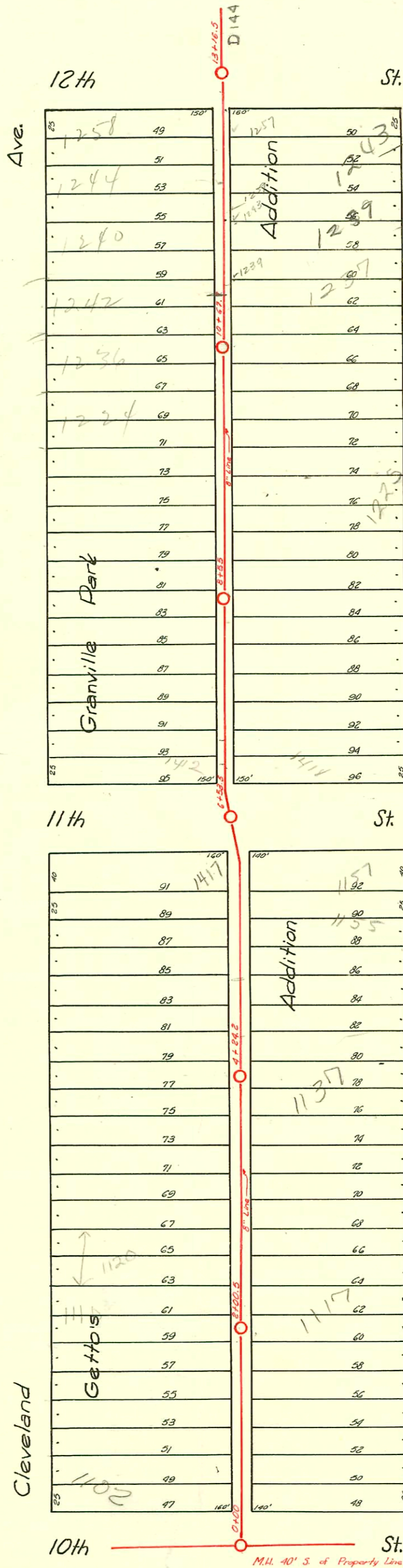


DIST. 11 - S.S. NO. 20
1920



CONSTRUCTION RECORD

SERVICE RECORD

STATION	ELEVATION		Depth	MANHOLE	4-INCH "Y" BRANCHES		No. of Permit		House Number		DATE OF PERMITS		
	Ground	Grade			North West	South East	North West	South East	North West	South East	North West	South East	
0+00	115.64	105.68	9.96	0+00	+52.5	0+50		10+1		1122-24 26-21-51		6-8-56	
1+00	115.38	105.88	9.50		+76.5	+74	#852		1107	Mathewson	9-17-21	9-18-25	
					+22.1	+25.6		#1003		1111	Mathewson		1-4-51
2+00	115.57	106.08	9.49	2+00.5	+105	+112 at 15.5' w	#1284	#726049	1108	Mathewson	10-3-23	4-28-22	
			8.6	2+00.5	+229.5	+27	C-20172 #41-15587 668	727	1110 1116 1123 (Clear) 1122	Cleveland	7-13-70 11-10-94	9-23-20	
					+37.5	+52	#929		1115	Cleveland	4-19-54		
3+00	114.97	106.25	8.72		+81.5	+79	#730	#117	1131	Mathewson	10-28-27	8-25-25	
					+106.5	+04			1138	Cleveland	9-27-20		
					+31.5	+29			1137	Mathewson			
					+56.5	+54			1137	Mathewson			
4+00	114.82	106.43	8.39		+81.8	+79.3	#400		1138 Cleve.		5-12-21		
			8.0	4+24.2	+104.5	+107	#1477 #1476	24265	1128 Cleve.	Math.	10-6-23 11-4-22	11-13-29	
					+33.5	+31			1142	Cleveland	9-10-23	10-31-24	
					+59.5	+57*	#1343	#2424	1137?	Math.			
5+00	115.17	106.60	8.87	5+08.5	+84.5	+82	#35241 213	#22789 317	1150	Math.	12-27-71	4-6-29	
					+108.5	+06			1155	Math.	2-14-23		
					+63.5	+61	#434	#2621	1156	Cleveland	6-7-21	12-9-24	
					+82.5	+82		#49763 2593	1137	Math.		6-3-25	
6+00	115.83	106.78	9.05		+13.5	+11			1137	Math.		11-24-24	
			8.65	6+53.7	+194.5								
7+00	115.76	106.93	8.83		+00	+10	#473 #9520478-7 138		1416 E. 1144 1202 1204	Cleveland	5-8-30 12-14-45 1-29-23		
					+21.5 at edge of alley				1204	Cleveland	1-29-23		
					+47	+44.5	#157		1203	Mathewson	2-7-71		
					+72.5	+70	#22843 1922	155	1203	Mathewson	12-28-23	3-11-27	
8+00	115.87	107.05	8.82		+30.5	+28	#551		1210	Cleveland	3-25-24		
			8.6	8+55	+54.5	+52							
					+80.5	+78			1218	Mathewson	4-30-24	11-8-25	
9+00	116.28	107.17	9.11		+06.5	+04	#907	#187	1219	Mathewson	12-25-24	6-27-25-26	
					+33.5	+31	#681	#372	1222	Mathewson	6-25-25	7-8-28	
					+59.5	+57			1211	Mathewson	7-25-22		
					+184.2	+81.7	#1992		1224	Mathewson	4-28-22	7-25-22	
10+00	116.26	107.29	8.97		+112.5	+10	#1043 #214		1224	Cleveland	7-16-23		
			7.8	10+67.7	+37.5	+35					2-13-23		
					+63	+60.5							
					+89.5	+87			1240	Cleveland	8-25-22		
11+00	115.17	107.42	7.75		+13.5	+11	#1085		1239	Mathewson	4-27-25	12-27-25	
					+38.3	+35.8	#422	#1344	1240	Mathewson	8-1-27		
					+63.5	+61	#222		1243	Mathewson	3-2-25	4-5-29	
					+88.5	+86	#7604 #3015031	#312	1244	Mathewson	1-14-21		
12+00	114.80	107.55	7.25		+14.5	+12	#213		1257	Mathewson	2-13-23		
					+38.5	+36							
					+64.5	+62	#181	#114	1258	Cleveland	7-31-35	10-17-28	
			6.95	13+16.7	+87.7	+85.2							

* #2151-1147 Math. 3-11-29

2001-00131-1/19/01-1244 N Cleveland-Wichita Plog- 4" SCH 40-WYE w/ Donut 102'S of MH 13+16.7 (12+14.5)

R 16644 Slo-11-14 Slo Seal-off #17294 (Hawley) 7-21-86 (0+24.0-)

R #4208 1418 E-11+6.5 (Henning) 7-27-81 (R 74' N 086+53.5)

#1106980-1127 Mathewson-8-26-75-Henning (3+05.5)

R #18220-1121 Mathewson-3-3-70-KM Linsky 2+67.8

#220-Top-1224 Cleveland-8-3-28-Simmons

#2401-Top-1117 Mathewson-11-7-25-Marley Pigg

#5088-Top-1237 Mathewson-5-5-53-Artie Day

#6850-Top-1152 Cleveland-11-8-53-Artie Day

#17077-Seal off of C Service 11-25-69 (5+69.7)

93-4017-7 (1422 E. 104) Seal off - 4" Clay tile line Sealed off 53' north of MH and at wye. No cut

93-5241-7 (1150 Cleveland) R-4" A BS40 - Replaced 41' of line to point 3' from main wye approx on msmt 1/4" pt shallow

#2660-Top-1034 Mathewson - Seal off - 1-13-67

#12169-Seal off-1106 Cleveland-Duquoy Blvd. - 1-13-67 (Sealed 26' north of MH in 10" bk. at edge of driveway)

C-36130-Seal off-1417 E-11 - Seal off Henning 11-29-72 (5+99.3)