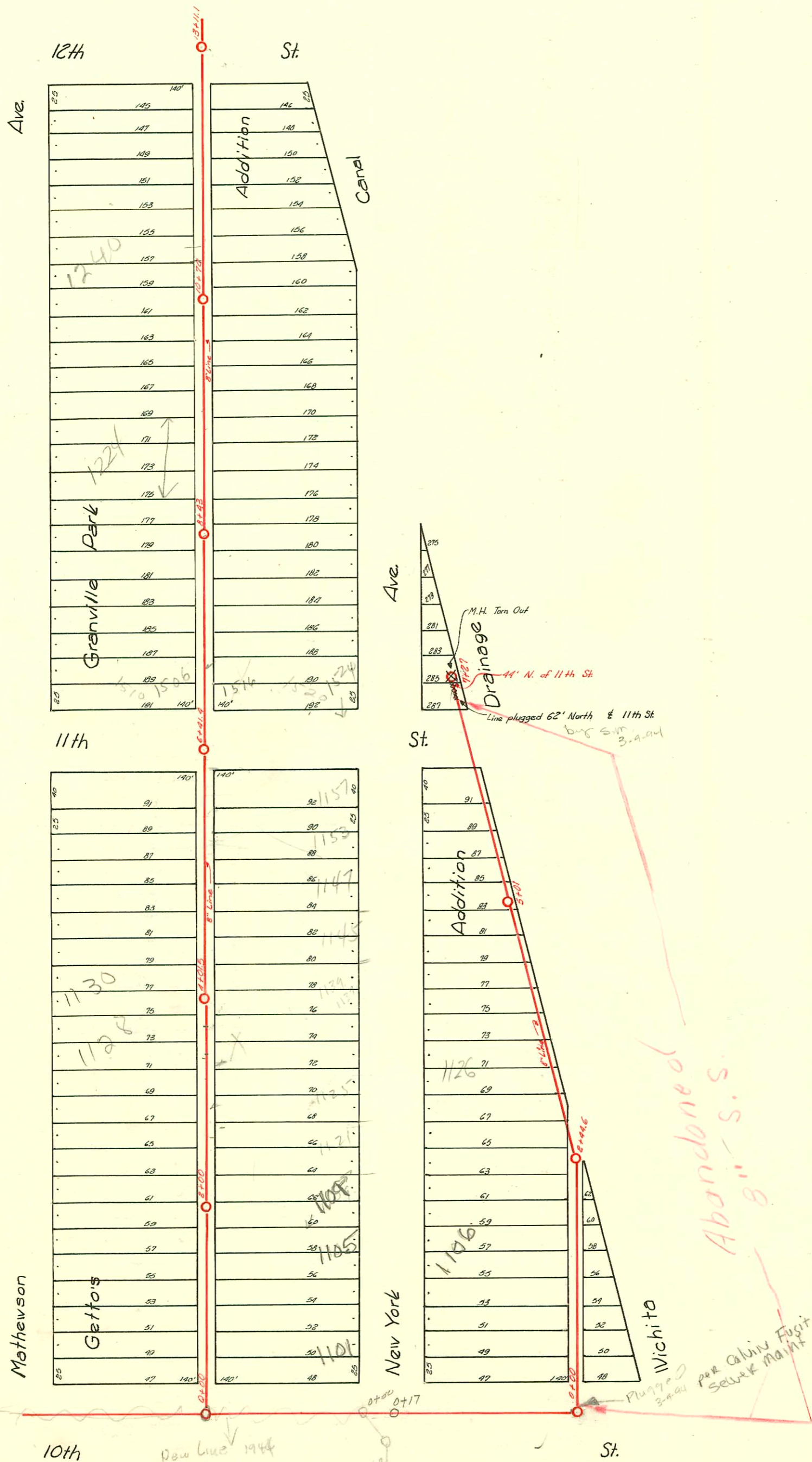


DIST. 11 - S.S. NO. 20
1920



10th St
New line 1944
See E 236
8" Line Removal
new 10" line
See Page E 236

97-15969-7 9-13-97 1138 N Mathewson
#c6081- deal - 1524 E, 11th St - Geo. Duffin - 12-11-67 (5+47)
#c65039 S.O. (1506) E. 11th - Al Henning 2-14-78 (7+09.4)
#21239 11-7-89 1121 N New York - MK Pbs - (6' S. of NPL Replaced 17' Lower Line 4" PUC40)
98-23615-7-1/25/99 - 1240 Mathewson - Arrowhead - 4" SCH 40 - CITY REPAIR - 1V22, 1H45, ITWINCO

St. 2003-02639 10/13/03 1109 ± NO New York
(REAR HOUSE) A.F. Henning concrete in clay
4' South of NPL + 29' E of WPL

St. Plugged 3-9-94 per Calvin Fugitt sewer maint

D-141

CONSTRUCTION RECORD

SERVICE RECORD

STATION	ELEVATION		Depth	MANHOLE	4-INCH "Y" BRANCHES		No. of Permit		House Number		DATE OF PERMITS	
	Ground	Grade			North West	South East	North West	South East	North West	South East	North West	South East
0+00		106.50	7.1	0+00	+41.5 +67.5 +94	+39 +65	#2855 SQ C35425		1102 New York 1102 New York			12-16-49 10-17-72
1+00	113.02	106.80	6.22		+18.5 +44 +71 +94		94-3027 220		1106 New York			3-1-94 3-16-25
2+00	112.99	107.10	5.89 5.2	2+44.6	+21.8 +51 +76.5							
3+00	113.80	107.40	6.40		+102 +29 +55 +81		Seal #10577 2643		1126 New York			9-19-68 12-3-24
4+00	114.44	107.70	6.74		+106 +33 +60 +84							
+35	114.55	107.80	6.75									
+60	114.42	107.88	6.54									
5+00	115.45	108.00	7.45 7.0	5+01	+10.5 +38.5 +65 +92							
6+00	115.95	108.30	7.65		+16							
7+00	115.44	108.60	6.84 6.9	7+27	+22							
0+00	114.81	107.21	7.60	0+00	+39.7 +59.5 +88.7	+37.2 +57 +86.2	#13977 2547 #1998 2495	1102 Mathewson 1102 Mathewson	1101 New York			3-23-61 11-17-24 9-23-61 11-13-24
1+00	115.28	107.31	7.97		+14.3 +40.2 +65.5 +92.5	+11.8 +37.7 +63 +90	#7005 SQ C3032 #30	1108 Mathewson 1105 New York				12-7-55 11-29-72 1-13-22
2+00	116.26	107.41	8.85 8.15	2+00	+17.5 +44 +70.5 +97.5	+15 +41.5 +68 +95	#2153 5272 #2534 #1445	1116 Mathewson 1122 Mathewson	1109 New York			11-17-24 11-13-24 3-3-82 11-13-24 7-3-61
3+00	116.09	107.51	8.58		+21.1 +46.5 +72.5 +97.5	+18.6 +44 +70 +95	#331 #1028 1286 #2028	1136 Mathewson 1138 New York	1125 New York			5-13-27 8-26-75 11-13-24 8-17-56
4+00	116.41	107.61	8.80 8.35	4+01.5	+24.5 +50.5 +75.5 +99.5	+22 +48 +73 +97	#738 #908 #671	1130 Mathewson 1144 Mathewson	1137 New York 1147 New York			4-16-92 9-1-27 12-27-71 5-13-52 6-4-92 9-8-27
5+00	116.39	107.71	8.68		+24.9 +49.5 +76 +102.5	+22.4 +47 +73.5 +100		1150 Mathewson	1147 New York			8-9-27 4-21-69
6+00	116.73	107.81	8.92 8.15	6+41.4	+26.5 +49.5 +74.9	+94 +72.4 +99	#790 #4073 #13452 69	1114 5272 1202 Mathewson	1157 New York 1202 New York			10-8-25 10-12-20 3-3-52 11-12-24
7+00	116.41	107.91	8.50		+21.2 +44 +73 +98	+18.7 +18.7 +18.7 +18.7	#105 #13452 69	1202 East 11th 1212 Mathewson	1020 East 11th			6-9-53 2-13-25 4-23-73
8+00	116.55	108.01	8.54 7.85	8+43	+40.0 +49.5 +74.9	+47 +72.4 +99	Seal #13864 #13864 2075	1235 New York				4-30-69 9-21-54
9+00	116.68	108.11	8.57		+40.5 +26.5 +51.3 +76.5 ok	+22 +48.8 +74 +90	#1962247 239 #13452 523	1234 Mathewson				2-23-92 3-19-25 2-4-92 3-23-23 5-20-25
10+00	116.14	108.21	7.93 6.8	10+70	+51.5 +26.5 +51.5	+24 +29 +49	#2144	1238 Mathewson				5-1-20 9-30-54
11+00	114.56	108.31	6.25		+77.2 +54.5 +25.3 +50.3 +77.1 +91.5	+75 +102 +22.8 +47.8 +76.6 +99	#2754 #2469	1242 Mathewson				11-17-26 1-25-99
12+00	114.41	108.41	6.00 5.8	13+11	+21.5 +25	+99 +85		1252 Mathewson				10-8-52 1-4-59

#7287-Top-1224 Mathewson (Bear)-1-27-56-Bowers & Moore Pibg. Co.
 #4073-Top-1510 East 11th-2-9-53-Art Prosser
 #6462-Top-1121 New York-11-15-51-Dex Robertson, Inc.
 #3376-Private Line-Trailer-1524 E. 11th-12-3-52-Dermody Pibg. Co.
 #3495-Setting Wye-1524 E. 11th-12-12-52-Dermody Pibg. Co.
 20052 #2404-Sea (1153 New York) S.D. In. Daniels-7-14-26-2-5-88
 2294 Top 12-7-56
 4122-Top-1210 E. 11th-3-22-22 Mathewson-12-15-90-11-1-57
 5863 Top 1224 Mathewson for me bond 12-16-57
 B1068-1204 Mathewson-3-24-64 Joe Lewis Lewis-top 7+29.4
 #83329-Set off-1516 E. 11th-Phil Brucking-5-4-65
 #134372 Seal off 1256 N Mathewson-Danell Williams (11+17.3) 10-19-65