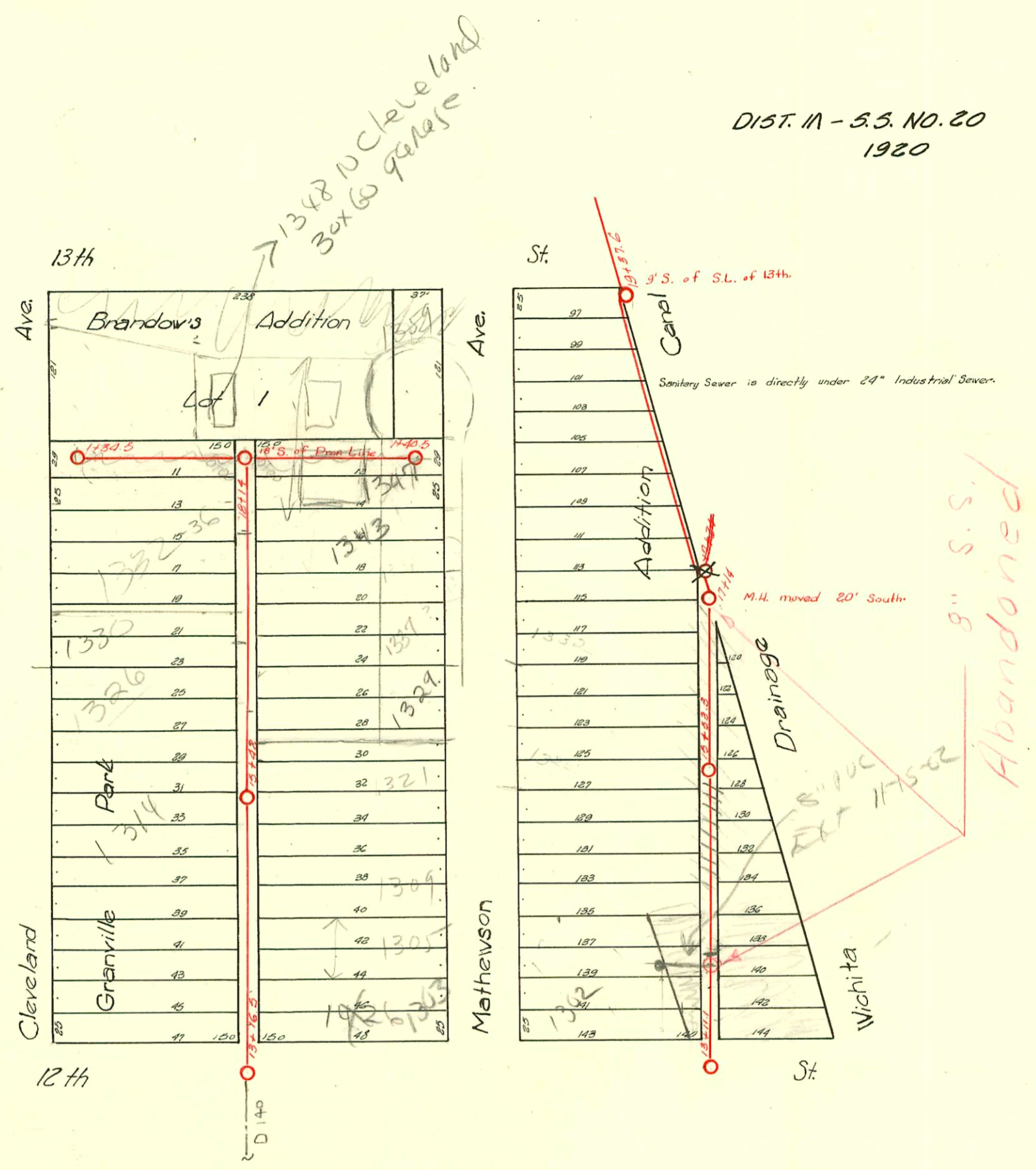


DIST. 11 - S.S. NO. 20
1920



94-12994-7 (1343 N Mathewson) N/C - Glover = $\frac{1" ABS \text{ Sch. 40}}{17+35}$

SWR 2002-02259 8/16/02 1305 N Mathewson (Brand) city main repair - saddle 93' N of MH 13+16.5 (14+09.5) 3 TWIN CO, 4" 40 PVC

SWR 2002-02260 8/16/02 1302 N Mathewson (Brand)

SWR 2002-02257 8/16/02 1303 N Mathewson Brand 4" Predco Saddle 46' N of MH 13+16.5 (13+62.5) TWIN CO, 1745

