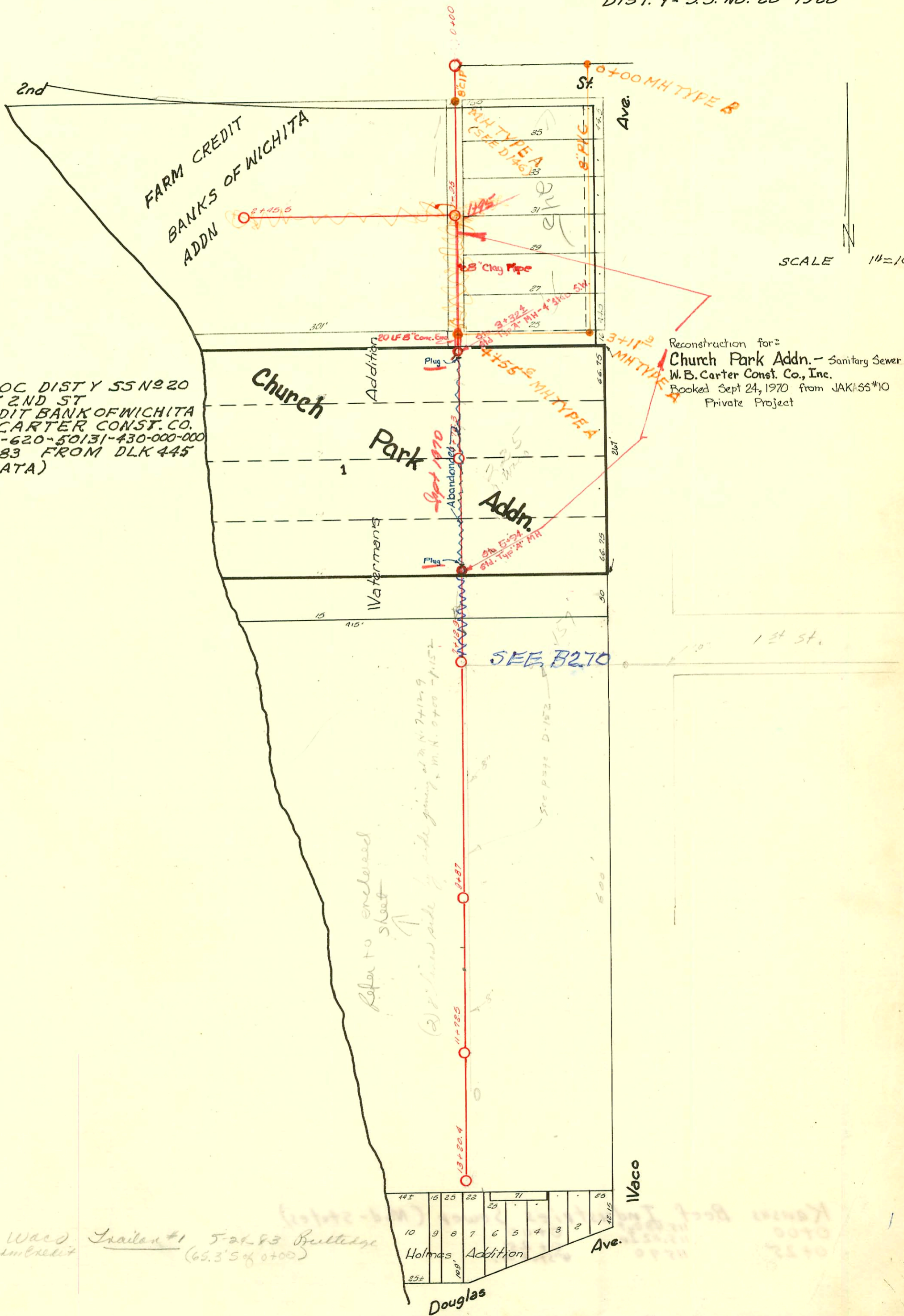


DIST. V - S.S. NO. 20-1920  
DIST. Y - S.S. NO. 20-1920

LATERAL RELOC DIST Y SS NO 20  
ON WACO S OF 2ND ST  
FOR FARM CREDIT BANK OF WICHITA  
BUILT BY: W.B. CARTER CONST. CO.  
PROJ. NO 824-36-620-50131-430-000-000  
BOOKED 11-28-83 FROM DLK 445  
(SEE D148 FOR DATA)



SCALE 1"=100'

Reconstruction for:  
Church Park Addn. - Sanitary Sewer  
W.B. Carter Const. Co., Inc.  
Booked Sept 24, 1970 from JAK/55\*10  
Private Project

#8227 Waco Farm Credit  
#2457 Waco Farm Credit  
Trailer #1 5-21-83 Bullidge  
(65.3' S of 0+00)

D-146  
D 146

CONSTRUCTION RECORD

SERVICE RECORD

FCB of W

Reconstructed - see below  
Line Abandoned - see below

Lat. West from M.H. 1+95.

Reconstruction for Church Park Addn.

STATION	ELEVATION		Depth	MANHOLE	4-INCH "Y" BRANCHES		No. of Permit		House Number		DATE OF PERMITS	
	Ground	Grade			North West	South East	North West	South East	North West	South East	North West	South East
0+00				0+00	+52	+54.5	#308		419			
0+39	112.9	106.81	6.1	0+39	+75	+77.5	#62		West End 425		4-19-26	
1+50	113.38	107.17	6.21		+97	+99.5		#306	West End 2nd Waco		1-29-26	10-28-20
1+00	114.59	107.21	7.38		1+23.5	+26						
					+49	+51.5						
				1+95		+83		#719	547 Waco		8-12-21	
2+00	114.98	107.29	7.69		2+00	+02.5						
					+26	+28.5						
					+51	+53.5		S#C48276	241-235 Waco		2-4-75	10-15-23
					+76	+78.5		1516				
3+00	114.49	107.38	7.11		3+02.3	+04.8						
				3+32.4	+33	+35.5						
					+58.5	+61		#1218			8-16-23	
					+85	+87.5						
4+00	115.09	107.49	7.61	4+76.3	4+10	+12.5						
					+34.5	+37						
					+62	+64.5						
						+79.2						
5+00	112.74	107.58	5.16		5+02	+04.5	#1214	#1215	215 N. Waco	215	11-6-25	11-6-25
				5+94	+28.2	+30.7	#1008		215 N. Waco	N. Waco	9-14-25	
					+54	+56.5						
6+00	111.27	107.68	3.59		6+00	+02.5						
					+25.7	+28.2						
					+46.3	+48.8						
					+72	+74.5		#355	201 N. Waco		3-2-24	
7+00	110.80	107.78	3.02	7+12.9	7+24	+26.5						
					+49.8	+52.3						
					+75	+77.5						
8+00	113.36	107.87	5.49		8+01	+03.6		#576	157 N. Waco		3-21-24	
					+26	+28.5						
					+56	+58.5						
					+81	+83.5						
9+00	113.57	107.98	5.59	9+87	9+07	+09.5						
					+32	+34.6						
					+56	+58.5						
10+00	113.98	108.09	5.89		10+35	+37.5						
					+60	+62.5						
					+89	+91.5						
11+05	113.88	108.20	5.68	11+72.5	11+15	+17.5						
11+72.5	113.79	108.27	5.52		+40	+42.5		#780	121 N. Waco		10-14-20	
					+65.8	+68.3						
					+92	+94.5						
12+00	115.15	108.32	6.83		12+13	+15.5		#875			9-21-21	
					+39	+41.5						
					+65	+67.5						
13+00	115.25	108.42	6.83		+90	+92.5						
13+20.4				13+20.4	13+11.2	+13.7		#904	Tapped into M.H. 13+20.4		9-22-20	
0+00	114.05	107.39	6.66	0+00	North	South						
					+16.3	+18.8						
					+42	+44.5						
					+68	+70.5						
					+93.3	+95.8						
1+00	111.78	107.51	4.27		1+13.3	+20.8						
					+45	+47.5						
					+69	+71.5						
					+94.5	+97						
2+00	111.75	107.63	4.12		2+19.8	+22.3						
2+45.5			5.2	2+45.5								
1+95	114.56	108.06	6.5	Existing M.H. Bag 8" Clay Pipe	West	East						
2+00						2+11						
						2+13						
						6"-4 2+53						
						2+55						
3+00	115.8	108.48	7.3									
	113.9	108.61	5.3	3+32.4	4" Stub 8" W. End Line. Line 6. Plugged.							
				5+94	Line N. Plugged.							

C20286-(157) Waco Let off - J.C. Severe 7-30-70  
C14959-(245) Waco 3-67 Waco (5+35)

#750-435 West End-8-30-27-Johnson & Rippe  
#428-203 N. Waco-4-25-29-Creed-Plummer & Skinnell  
#2550-Tap-421 West End-10-25-45-H.P. Durnaway  
#138-Tap-434 West End-10-1-46-Brodie Pipe Co.  
#1414-Private Line-235 N. Waco-1-9-48-Moore-Robertson  
#207-Tap-241 N. Waco-6-15-48-Davidson Pipe Co.  
#222-Used old connection-241 N. Waco-7-2-48-Davidson  
#5594-Tap-253 N. Waco-7-14-55-Eugene Reynolds

C23412-225 Waco 3-23-71-John Harrison - tap in M.H. 3+32.4  
C24716-419 Waco 6-3-71-D.W. Gray - tap 3+16.4  
S.C. 48276-235 Waco 2-4-75-Lewis - let off