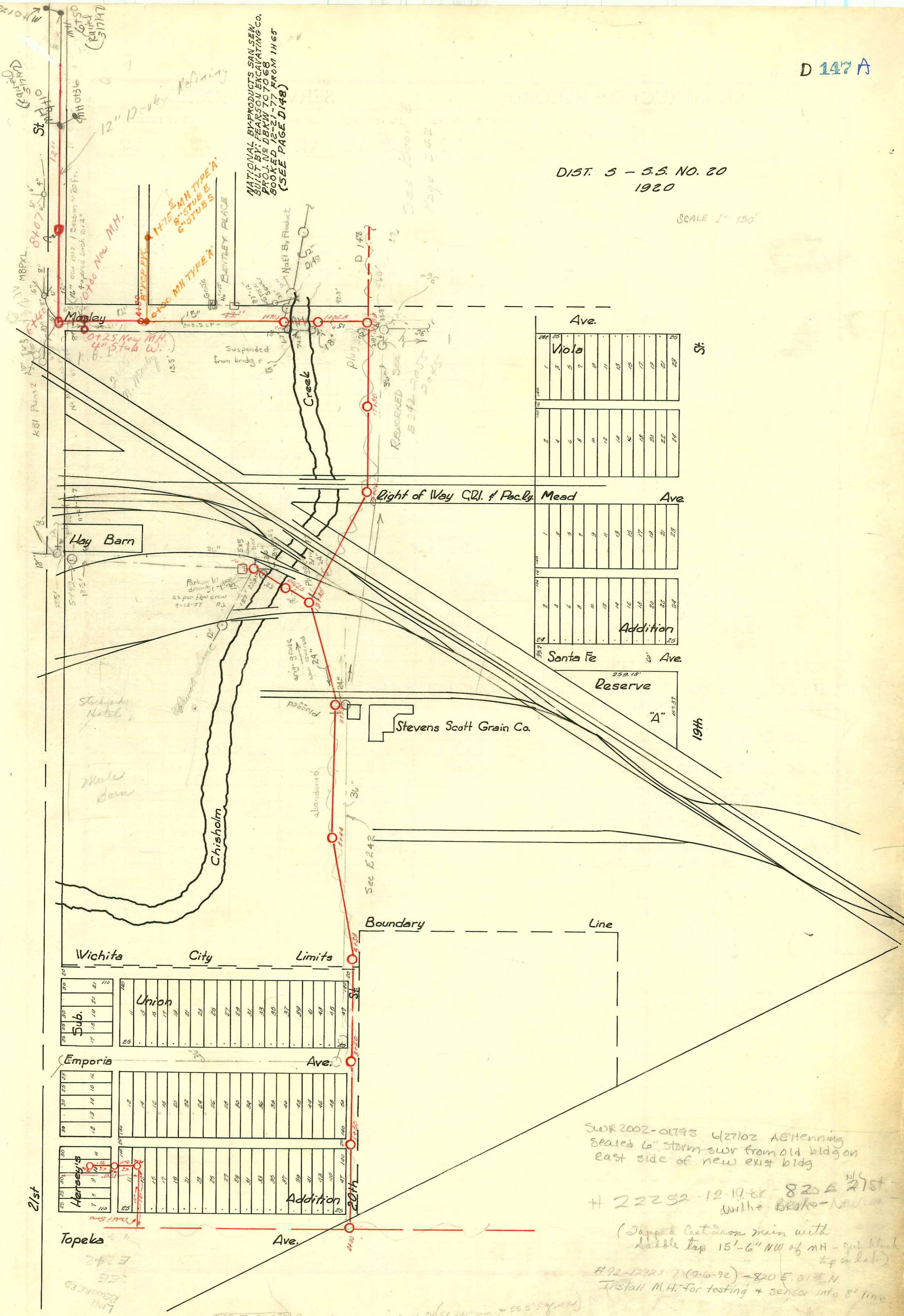


DIST. 5 - S.S. NO. 20
1920

SCALE 1" = 150'



Ave.	
1	25
2	26
3	27
4	28
5	29
6	30
7	31
8	32
9	33
10	34
11	35
12	36
13	37
14	38
15	39
16	40
17	41
18	42
19	43
20	44
21	45
22	46
23	47
24	48
25	49
26	50

Mead Ave	
1	25
2	26
3	27
4	28
5	29
6	30
7	31
8	32
9	33
10	34
11	35
12	36
13	37
14	38
15	39
16	40
17	41
18	42
19	43
20	44
21	45
22	46
23	47
24	48
25	49
26	50

Santa Fe Ave	
1	25
2	26
3	27
4	28
5	29
6	30
7	31
8	32
9	33
10	34
11	35
12	36
13	37
14	38
15	39
16	40
17	41
18	42
19	43
20	44
21	45
22	46
23	47
24	48
25	49
26	50

Wichita City Limits	
1	25
2	26
3	27
4	28
5	29
6	30
7	31
8	32
9	33
10	34
11	35
12	36
13	37
14	38
15	39
16	40
17	41
18	42
19	43
20	44
21	45
22	46
23	47
24	48
25	49
26	50

Emporia Ave	
1	25
2	26
3	27
4	28
5	29
6	30
7	31
8	32
9	33
10	34
11	35
12	36
13	37
14	38
15	39
16	40
17	41
18	42
19	43
20	44
21	45
22	46
23	47
24	48
25	49
26	50

Harsey's Addition	
1	25
2	26
3	27
4	28
5	29
6	30
7	31
8	32
9	33
10	34
11	35
12	36
13	37
14	38
15	39
16	40
17	41
18	42
19	43
20	44
21	45
22	46
23	47
24	48
25	49
26	50

SWR 2002-01795 6/27/02 Attention
Sealed 6" storm swr from old bldg on
east side of new exist bldg

22252 - 12-19-88 - 820 E 21st
Wilhe. Beako-Naw...

(Dipped out from main with
labeled top 15'-6" NW of MH - cut blank
top in lab)

92-12923-7 (9-6-90) - 820 E. 21st N.
Install M.H. for testing + sensor into 8' line

- 15738 - 1100 E 21st St Jerry Engstrom 3-4 20/20 min + 555' of pipe
- 064336 - 12-6-77 - 2136 N. Main - 21st St - 21st St - 21st St
- 064337 - 12-6-77 911 E 21st St - 21st St - 21st St - 21st St
- 064338 - 12-6-77 915 E 21st St - 21st St - 21st St - 21st St
- 066121 - 4-27-78 - 707 E. 21st St - 21st St - 21st St - 21st St

NATIONAL BY-PRODUCTS SAN SEN
BUILT BY: FEARSON EXCAVATING CO.
PROJ. NO. DBXW 707068
BOOKED 12-21-77 FROM 1163
(SEE PAGE D148)

REWORKED SEE
E 242-205
2-0-85

LINE
REWORKED
SEE
E 242

21st

Topeka Ave.

Ave.

20th

See E 242

Boundary Line

Stevens Scott Grain Co.

Reserve

Santa Fe Ave

Addition

Right of Way C.R.I. & Peckly Mead

Mead Ave

Ave.

Viola

St

19th

Chisholm Creek

Hay Barn

Stockyard
Mule Barn

Wichita

City

Limits

Sub.

Union

Emporia

Ave.

Addition

Harsey's

Topeka

Ave.

20th

See E 242

Boundary Line

Stevens Scott Grain Co.

Reserve

Santa Fe Ave

Addition

Right of Way C.R.I. & Peckly Mead

Mead Ave

Ave.

Viola

St

19th

Chisholm Creek

Hay Barn

Stockyard
Mule Barn

Wichita

City

Limits

Sub.

Union

Emporia

Ave.

Addition

Harsey's

Topeka

Ave.

20th

See E 242

Boundary Line

Stevens Scott Grain Co.

Reserve

Santa Fe Ave

Addition

Right of Way C.R.I. & Peckly Mead

Mead Ave

Ave.

Viola

St

19th

Chisholm Creek

Hay Barn

Stockyard
Mule Barn

Wichita

City

Limits

Sub.

Union

Emporia

Ave.

Addition

Harsey's

Topeka

Ave.

20th

See E 242

Boundary Line

Stevens Scott Grain Co.

Reserve

Santa Fe Ave

Addition

Right of Way C.R.I. & Peckly Mead

Mead Ave

Ave.

Viola

St

19th

Chisholm Creek

Hay Barn

Stockyard
Mule Barn

Wichita

City

Limits

Sub.

Union

Emporia

Ave.

Addition

Harsey's

Topeka

Ave.

20th

See E 242

Boundary Line

Stevens Scott Grain Co.

Reserve

Santa Fe Ave

Addition

Right of Way C.R.I. & Peckly Mead

Mead Ave

Ave.

Viola

St

19th

Chisholm Creek

Hay Barn

Stockyard
Mule Barn

Wichita

City

Limits

Sub.

Union

Emporia

Ave.

Addition

Harsey's

Topeka

Ave.

20th

See E 242

Boundary Line

Stevens Scott Grain Co.

Reserve

Santa Fe Ave

Addition

Right of Way C.R.I. & Peckly Mead

Mead Ave

Ave.

Viola

St

19th

Chisholm Creek

Hay Barn

Stockyard
Mule Barn

Wichita

City

Limits

Sub.

Union

Emporia

Ave.

Addition

Harsey's

Topeka

Ave.

20th

See E 242

Boundary Line

Stevens Scott Grain Co.

Reserve

Santa Fe Ave

Addition

Right of Way C.R.I. & Peckly Mead

Mead Ave

Ave.

Viola

St

19th

Chisholm Creek

Hay Barn

Stockyard
Mule Barn

Wichita

City

Limits

Sub.

Union

Emporia

Ave.

Addition

Harsey's

Topeka

Ave.

20th

See E 242

Boundary Line

Stevens Scott Grain Co.

Reserve

Santa Fe Ave

Addition

Right of Way C.R.I. & Peckly Mead

Mead Ave

Ave.

Viola

St

19th

Chisholm Creek

Hay Barn

Stockyard
Mule Barn

Wichita

City

Limits

Sub.

Union

Emporia

Ave.

Addition

Harsey's

Topeka

Ave.

CONSTRUCTION RECORD						SERVICE RECORD						
STATION	ELEVATION		Depth	MANHOLE	4-INCH "Y" BRANCHES		No. of Permit		House Number		DATE OF PERMITS	
	Ground	Grade			North West	South East	North West	South East	North West	South East	North West	South East
0+00		111.23	12.00									
1+00		111.33										
		111.41		1+80								
2+00		111.43										
3+00		111.53										
		111.59		3+60								
4+00		111.63										
5+00		111.73										
		111.82		5+99								
6+00		111.83										
7+00		111.93										
8+00	121.33	112.03	9.30									
	121.55	112.08	9.47	+44								
9+00	121.77	112.13	9.64									
10+00	122.58	112.23	10.35									
11+00	122.55	112.33	10.22									
				+38.5								
12+00	122.56	112.43	10.13									
13+00	121.88	112.50	9.38									
				+45								
14+00	123.79	112.60	11.19									
15+00	122.51	112.70	9.81									
16+00	120.38	112.80	7.58									
				+26								
17+00		113.10										
				+85								
18+00		113.20										
19+00	121.85	113.31	8.54									
		113.59		19+59								
0+00-13+45				0+00								
+62.5	122.61	112.56	10.05	+62.5								
1+37.5	122.30	112.63	9.67	1+37.5								
				5+42								
0+00-19+59	119.81	114.06	5.75	0+00								
1+00	119.54	114.16	5.30	+46.8								
				+71.1								
2+00	119.81	114.26	5.55									
3+00	119.67	114.36	5.31									
4+00				4+80								
#1147-702 E 21st - 6-8-84 - Dennis Simmons - 67.5' S of R.M.H.												

Kansas Beef Industries Sewer (Mid-states)

0+00 115.48 Out 0+00
 0+25 115.82 In 0+25
 115.90 4" S 46 W.

#238 85' S. of 827 East 21st 4-1-24
 #637 10' N. H. 827 East 21st 4-1-24
 #1034E 21st 10-21-65
 Rec. #78182 \$50.00 permit fee pd. 10-21-65 1034 E 21st
 Check City - City

#C44081 2155 N. Meadley 3/21/74
 - 4" M.H. NW on private line meet from H 37.5

- #38712 - 659 E. 21st St. - 4-19-73 - (Restaurant) J. Schuster (MH stub)
 #30541 - 659 E. 21st St. - 2/22/77 - Starbuckles Hotel - J.C. Leunas (Sewer in 2nd private M.H. no. of Chisholm Creek)
- #140 - Top - Pillsbury Mills at 20th & Emporia - 10-8-29 - C.M. Burson
 - #14 - Top - 2100 N. Meadley - 3-4-33 - Clark & Smith
 - #34 - Private Line - 915 E. 21st - 4-21-33 - W.O. Harmon
 - #258 - Private Line - 901 E. 21st - 7-7-36 - Albert J. H. Jr.
 - #523 - Connection to Derby Private Line - 900 E. 21st - 12-4-36 - Lansdowne
 - #780 - Top - 911 E. Bentley - 6-29-43 - C. Davidson
 - #1012 - Top - 2101 N. Meadley - 8-23-43 - E. LaFay
 - #1107 - Top - 911 Bentley Place - 10-29-43 - C. Davidson
 - #1103 - Top - 911 Bentley Place - 10-29-43 - C. Davidson
 - #1757 - Private Line - 900 E. 21st - 10-4-44 - W. H. Pigg Co.
 - #1758 - Private Line - 900 E. 21st - 10-4-44 - W. H. Pigg Co.
 - #1771 - Top - 911 E. 21st - 12-16-48 - 12-16-48 - C. Davidson Pigg Co. (7' x 6' 4")
 - #283 - Private Line - 911 Bentley - 3-29-47 - Earl McCabe
- 5-28-77 - 99' front of m. h. on meadley 64' 3" 21st Meadley
 7+59
- NE 702 E. 21st N. S. 27-83 - Dennis Simmons (private line) (see map) (62.7' W of M.H.)