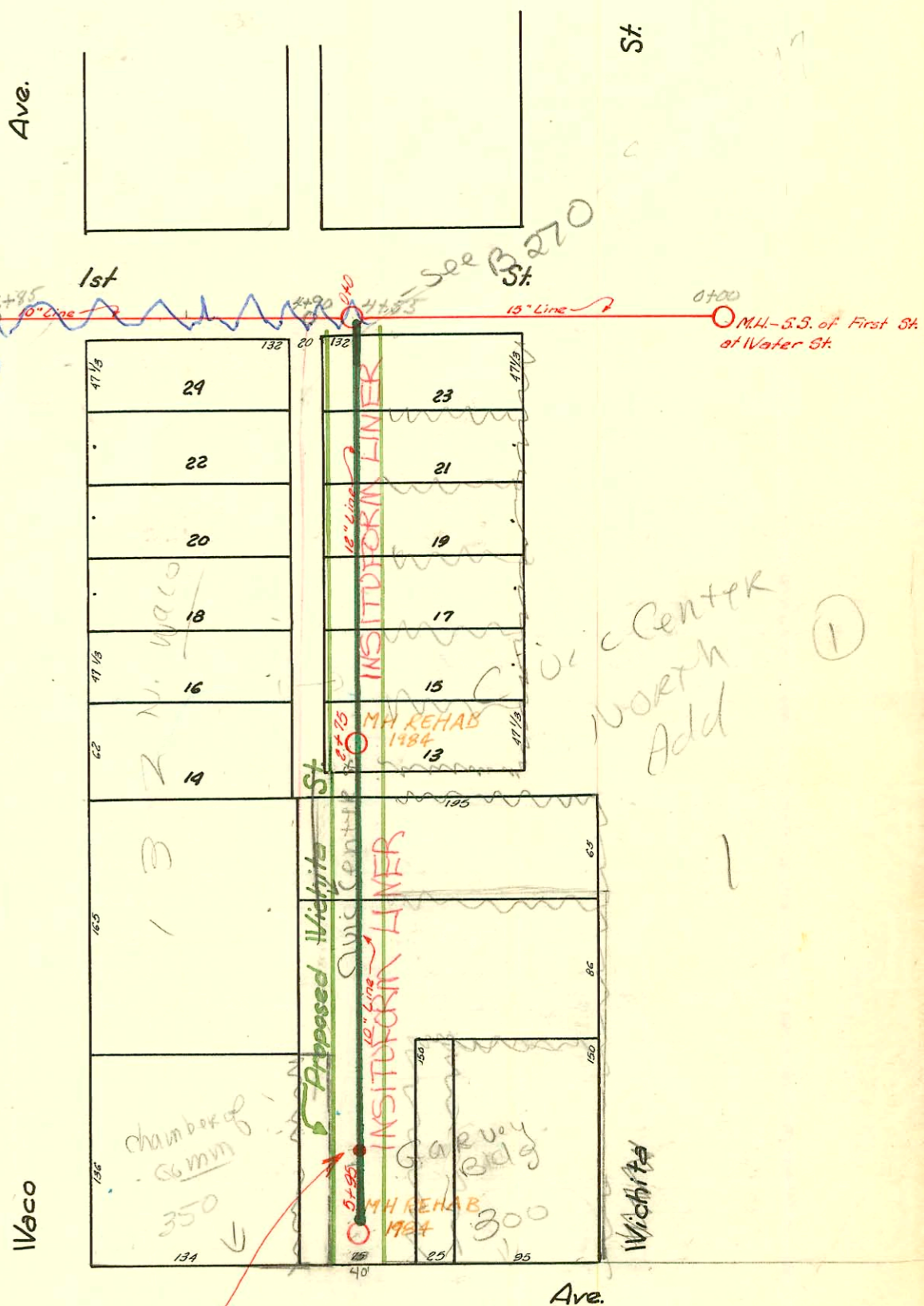
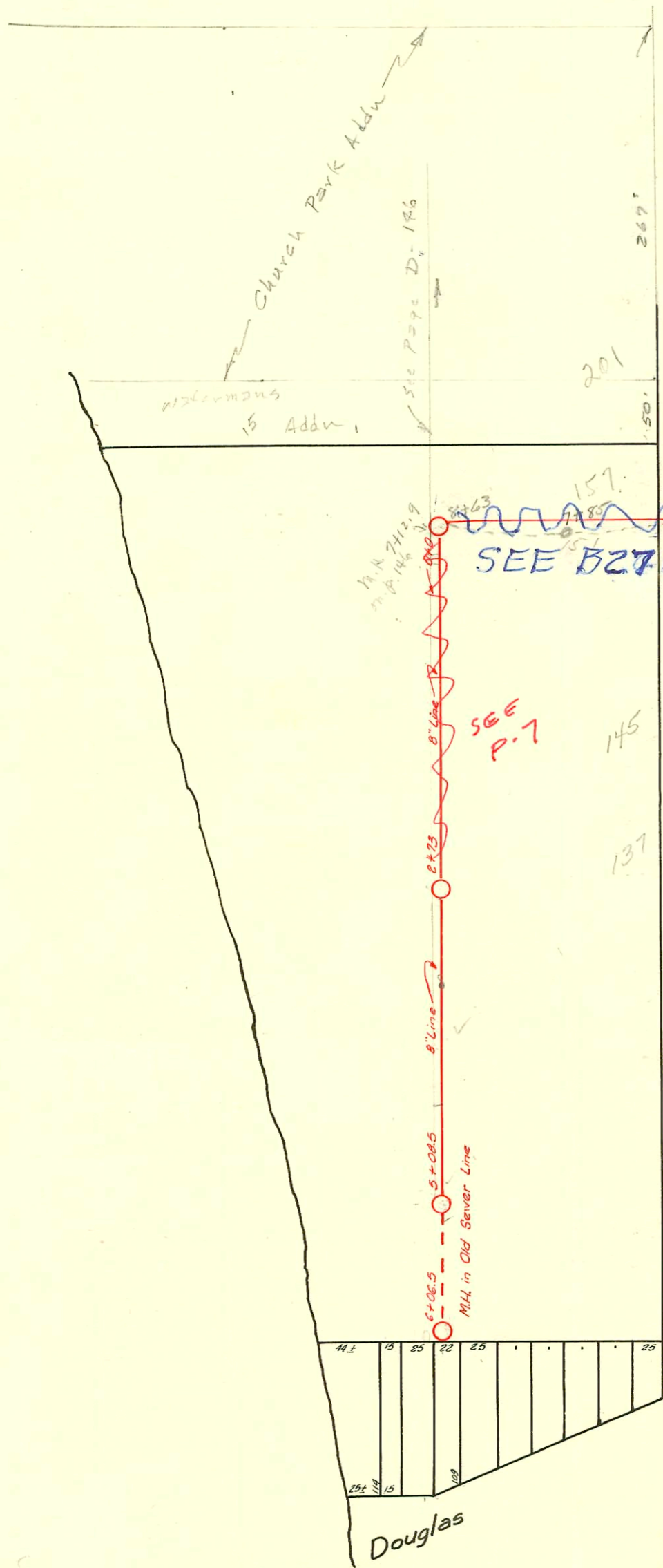


DIST. V-A
S.S. NO. 20
1922



SPECIAL SHALLOW Type 'B' M.H.
Built 5-88 to serve CHAMBER OF COMMERCE
468-76-245-80001-000-000-164

SANITARY SEWER REHABILITATION OF SEWER
LINE IN CIVIC CENTER PLACE - DOUGLAS TO
FIRST STREET
PROD. NO. 468-82687 (621631)
BUILT BY INSITUFORM PLAINS, INC.
BOOKED OJB FROM AS BUILTS 7/22/97

CONSTRUCTION RECORD						SERVICE RECORD						
STATION	ELEVATION		Depth	MANHOLE	4-INCH "Y" BRANCHES		No. of Permit		House Number		DATE OF PERMITS	
	Ground	Grade			North West	South East	North West	South East	North West	South East	North West	South East
0+0	114.01	107.39	6.62	M.H. in S.S. First St at & proposed West 1/2 St 0+0	0+20.5	0+18						
					+45.5	+43						
					+72.5	+70						
					+97.5	+95	# 1042		147 N. Waco			9-25-28
1+0	113.44	107.49	5.95		1+20.5	1+18						
					+46	+43.5						
					+68	+65.5						
					+99.5	+97						
2+0	113.59	107.59	6.00		2+21.5	2+19						
					+47	+44.5						
				2+75	+69.7	+67	19396 13213		132 N. 5th Waco			10-27-27 7-28-60
3+0	113.66	107.69	5.97		3+18	3+15.5						
					+42.9	+40.4						
					+68.1	+65.6	C16083		168 W Waco			9-29-69
					+93.3	+90.8						
4+0	113.68	107.79	5.89		4+18.5	4+16						
					+44.5	+42						
					+70.5	+68						
					+95.5	+93	B3018 # 201		300 W Douglas Mo. Pac. Depot			4-5-65 3-16-26
5+0	112.99	107.89	5.10		5+20.5	5+18						
					+46.5	+44	C32760 # 242		350 W. Douglas 318 W. Douglas			6/7/72 10-14-35
					+72.5	+70						
5+95	112.64	107.985	4.66	5+95	+88.5	+86						
0+0	111.99	107.34	4.65	M.H. West of Waco - 35 1st St extended		0+15						
						+41						
						+66.5						
						+93						
1+0	110.75	107.44	3.31			1+18.5						
						+43.5						
						+62.5						
						+94						
2+0	114.42	107.54	6.88			2+19						
						+44						
3+0	114.24	107.64	6.60	2+73		3+34.5						
						+45.6						
						+82						
4+0	114.57	107.74	6.83			4+08						
						+32.5						
						+54						
						+70.5						
						+90.5						
5+0	114.65	107.84	6.81	5+08.5		5+08.5						8" connection from Broadview Hotel
6+0	114.01	107.94	6.07	6+06.5		M.H. at end of old sewer						
0+0	113.47	106.30	7.17									
1+0	113.64	106.40	7.24									
2+0	114.02	106.50	7.52									
3+0	113.73	106.60	7.13									
4+0	113.94	106.70	7.24									
5+0	114.03	106.80	7.23									
6+0	114.21	106.90	7.31									
7+0	113.89	107.00	6.89									
8+0	112.84	107.10	5.74									
8+76	111.99	107.18	4.81									

No West Y's

Connected when sewer was built.

C-26701-145 N. Waco - 8-23-71 - Tap (2+13)

C-22013 - 157 N. Waco. (local off) J. C. Stevens, 12-2-70 (10' North 3' E. of M.H. 7+12.9)

C-22014 - 201 N. Waco (local off) J. C. Stevens, 12-2-70 (6+77.7) see D-146

C-22015 - 430 W. 1st St. (local off) J. C. Stevens, 12-2-70 (25' S.W. of M.H. 7+12.9)

C-22016 - 434 W. 1st St. (local off) J. C. Stevens, 12-2-70 (45' S.W. of M.H. 7+12.9)

C-21214 - 471 7th St. - local off - J. C. Stevens 10-5-70 (25' S. of S. curb at 1st - meet edge of concrete plug)

C-26286 - 151 N. Waco - local off - J. C. Stevens 7-29-70 (W.S. of S. curb at 1st - 63' W. of curb line of Waco)

192 - Tap at 157 N. Waco - 12-27-23

49 - Tap - 101 N. Waco - (Broadview Hotel) - 2-6-29

2287 - Tap - 328 W. Douglas - 5-2-40 - W. W. Drey

646 - Used old connection - 140 N. Waco - 8-10-46 - Harley Riggs

2754 - Tap - 140 N. Waco - 12-8-49 - C. E. Alexander

15603 - stub in N. Waco () 5-2-62 - Regina Turner - 101 N. Waco

B3018 - 300 W. Douglas - Kendall Rigg - 4-5-65 - tap (4+97)

C16083 - 168 N. Waco - May Bros. Inc. - 9-29-69 - Tap (3+58)