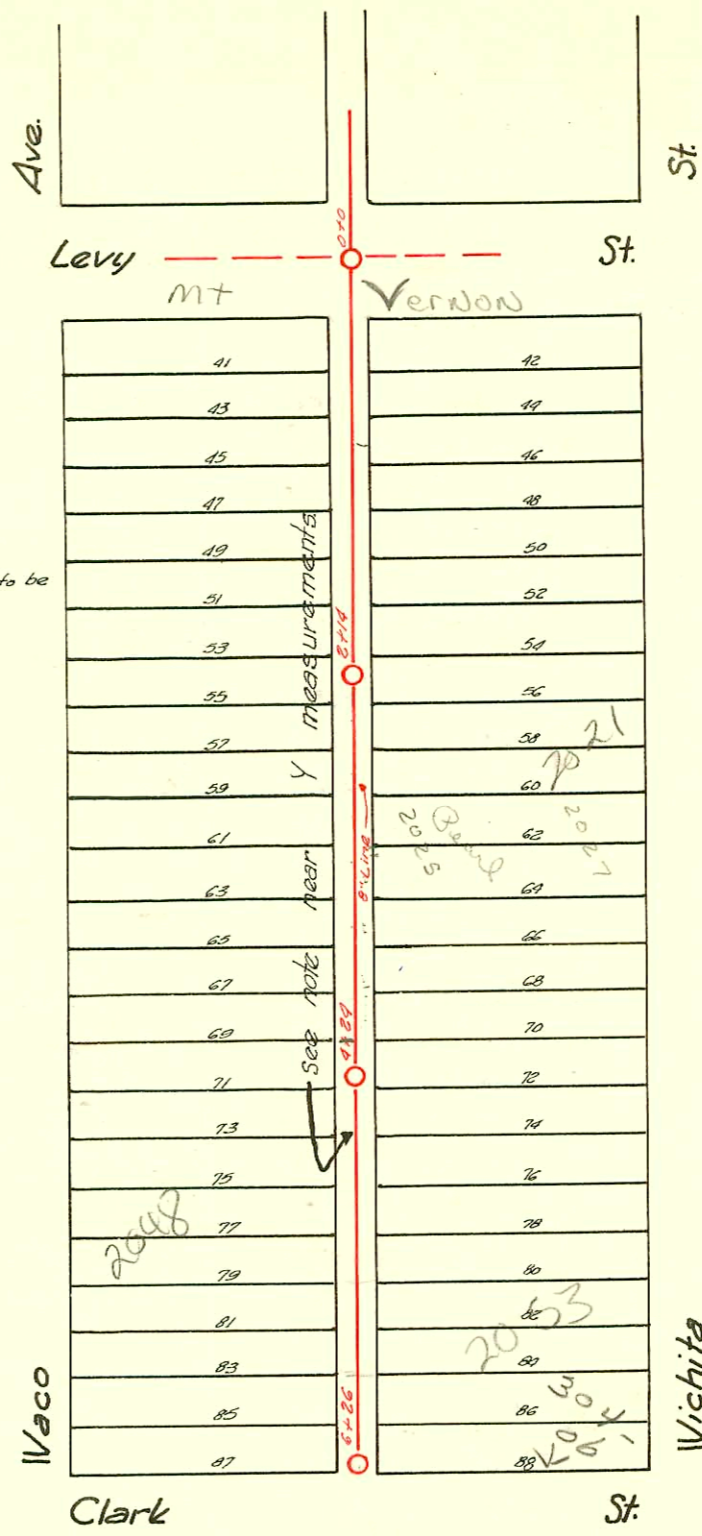
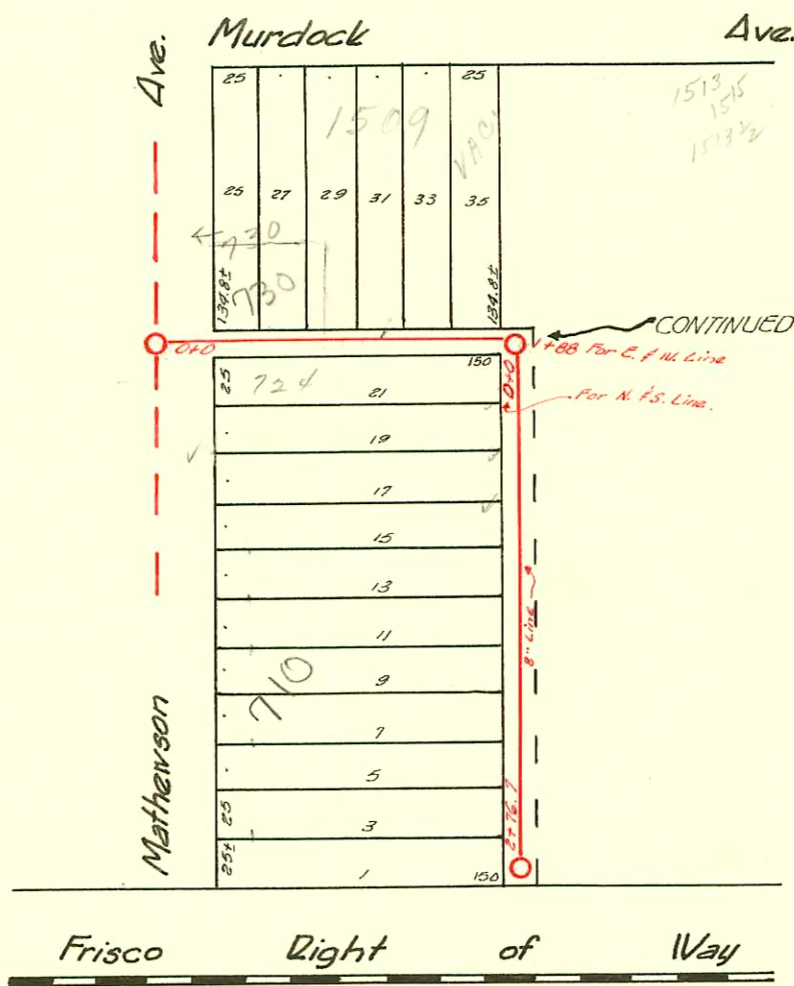


Note: The Y's in this block are 6" but not to be trapped—and 4" file to be used by using reducer.

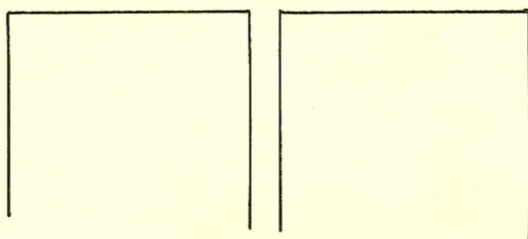


LAT. 2 - DIST. C - S.S. NO. 20  
1923



LAT. 5 - S.S. NO. 20  
1924

CONTINUED ON PAGE 201.



D153

CONSTRUCTION RECORD							SERVICE RECORD					
STATION	ELEVATION		Depth	MANHOLE	4-INCH "Y" BRANCHES		No. of Permit		House Number		DATE OF PERMITS	
	Ground	Grade			North West	South East	North West	South East	North West	South East	North West	South East
0+0		96.20		0+0	0+53.5	0+51	# 339		2002 S. Waco		11-15-46	
1+0		96.30			+78.5	+76	# 410	# 1908	2006 S. Waco	2005 S. Wichita	7-18-46	12-27-23
					+28.5	+26	# 411	# 3863	2012 S. Waco	2013 S. Wichita	7-18-46	2-19-51
					+53.5	+51						
					+79.5	+77						
2+0		96.40		2+14	2+04.5	2+02	# 614		2017 S. Wichita			3-31-24
					+29.5	+27	# 307	# 171	2022 S. Waco	2021 S. Wichita	3-30-25	3-7-25
					+54.5	+52						
					+79.5	+77						
3+0		96.50			3+05.3	3+03	# 140		2025 S. Wichita			3-1-26
					+30.5*	+28	# 258		2032 S. Waco		3-28-29	
					+55.5	+53						
					+80.5	+78	# 514		2021 - utility add (P) S. Wichita			11-4-41
4+0		96.60		4+24	4+06	4+03.5	# 1384	# 1766	2040 S. Waco	2033 S. Wichita	9-19-23	8-1-24
					+31	+28.5						
					+56.5	+54	# 43	# 1767	2042 S. Waco	2041 S. Wichita	1-24-24	8-1-24
					+82	+79.5		3515		2043 Wichita		6-18-81
5+0		96.70			5+07.5	5+05	# 984		2044 S. Waco		5-1-24	
					+32.5	+30	# 165		2049 S. Wichita			5-3-49
					+57.5	+55	# 257	# 1760	2046 S. Waco	2007 S. Wichita	2-21-24	8-1-24
		96.80			+82.5	+80	# 6378		2052 S. Waco		11-3-51	
6+0		96.83		6+26	6+08.5	6+06	# 188	# 3334	2056 S. Waco	2007 S. Wichita	6-10-48	2-16-50
					6+13.1			274656		204 - 206 W. Clark		10-4-77
0+0	113.49	106.00	7.49	M.H. in 0+0 Mathewson	0+42 N.							
					+67							
1+0	112.81	106.10	6.71		+93							
					7+18		# 144		728 Mathewson		3-1-26	
+88	112.77	106.19	6.58	1+88 or for line South	+43		# 1207		1509 S. Murdock		11-5-25	
0+0	112.77	106.19	6.58	0+0	0+17.5 W.	0+20 E.	# 2900		724 Mathewson		3-1-77	11-10-53
					+41.4	+43.9						
					+67.6	+70.1	# 1887		718 Mathewson		7-14-27	
					+93	+95.5	# 11221				8-17-59	
1+0	112.90	106.29	6.61		1+18.4	1+20.9	# 342		716 Mathewson		6-10-31	
					+43.8	+46.3						
					+59.3	+71.3	# 97537		710 Mathewson		9-4-97	
					+94.5	+97	# 586		708 Mathewson		3-27-24	
2+0	112.84	106.39	6.45		2+27	2+20						
					+42.4	+44.9						
2+76.7	113.20	106.47	6.73	2+76.7	+62	+64.5	# 585		706 Mathewson		3-27-24	

Note: The Y's in this block are 6" but not to be fringed and 4" tile to be used by using reducer.

\*1315  
2026 S. Waco  
12-19-47

Alley East of Mathewson and South of Murdock.

#3765 - Top-2041 S. Wichita - 7-9-53 - Frederick Plbg. Co.  
#51 - Top-1513 E. Murdock - 1-31-31 - M.L. Lansdowne  
#1129 - Top-2053 S. Wichita - 5-24-50 - Millard Stigers  
5514 Top 2001 S. Wichita 10-17-57 Smith

R #3513 2043 S. Wichita (Maner) 6-18-81  
SD #93-3845-7 Seal off - 730 N Mathewson - No record of connection - 4' clay tile line sealed off 6' from main and 7' east of MH. No alley cut.